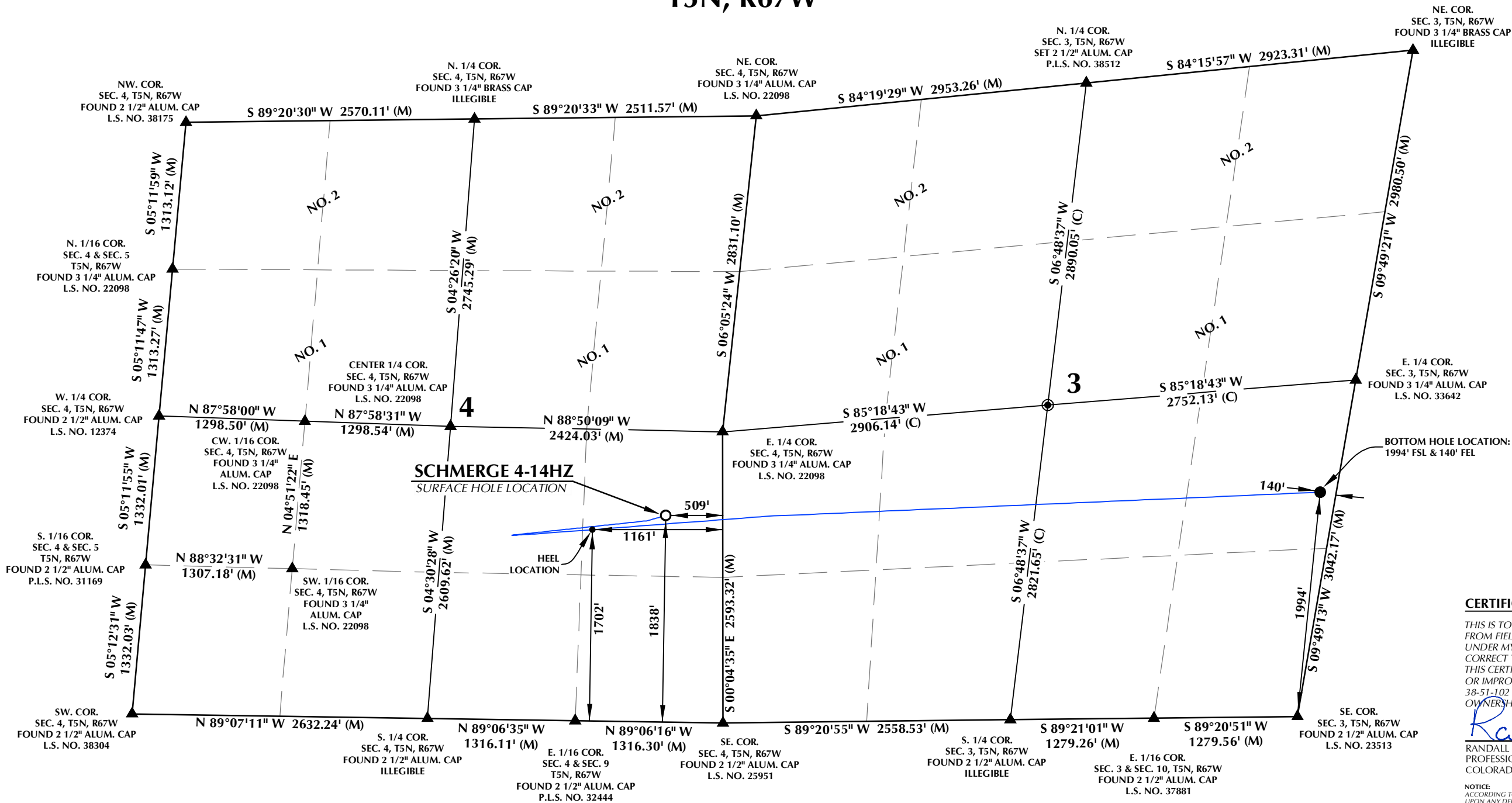


T5N, R67W



SURFACE HOLE LOCATION: NAD 83
GROUND ELEVATION= 4901.7'
LATITUDE= 40.426329°
LONGITUDE= -104.890027°
LATITUDE= 40°25'34.786"
LONGITUDE= -104°53'24.098"
HEEL LOCATION: NAD 83
LATITUDE= 40.425996°
LONGITUDE= -104.892371°
LATITUDE= 40°25'33.587"
LONGITUDE= -104°53'32.535"
BOTTOM HOLE LOCATION: NAD 83
LATITUDE= 40.426788°
LONGITUDE= -104.869075°
LATITUDE= 40°25'36.437"
LONGITUDE= -104°52'08.671"

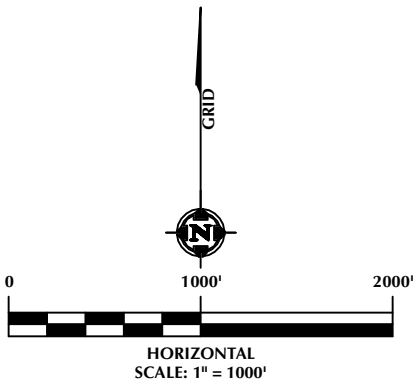
CERTIFICATE OF SURVEYOR:

THIS IS TO CERTIFY THAT THE ABOVE PLAT WAS PREPARED FROM FIELD NOTES OF ACTUAL SURVEYS MADE BY ME OR UNDER MY SUPERVISION AND THAT THE SAME ARE TRUE AND CORRECT TO THE BEST OF MY KNOWLEDGE AND BELIEF. THIS CERTIFICATE DOES NOT REPRESENT A LAND SURVEY PLAT OR IMPROVEMENT SURVEY PLAT AS DEFINED BY C.R.S. 38-51-102 AND CANNOT BE RELIED UPON TO DETERMINE OWNERSHIP.

Randall K. French
RANDALL K. FRENCH
PROFESSIONAL LAND SURVEYOR
COLORADO REGISTRATION NUMBER 38512
10/13/23

NOTICE:
ACCORDING TO COLORADO STATE LAW YOU MUST FORFEIT ANY LEGAL ACTION BASED UPON ANY DEFECT IN THIS SURVEY WITHIN THREE YEARS AFTER YOU FIRST DISCOVER SUCH DEFECT. IN NO EVENT MAY ANY ACTION BE BASED UPON ANY DEFECT IN THIS SURVEY BE COMMENCED MORE THAN TEN YEARS FROM THE DATE ON THE CERTIFICATION SHOWN HEREON.

- NOTES:
- ▲ INDICATES SECTION CORNER.
 - INDICATES CALCULATED CORNER.
 - ELEVATION BASED ON NAVD88 (GEOID18).
 - BASIS OF BEARINGS DERIVED FROM COLORADO COORDINATE SYSTEM OF 1983, NORTH ZONE.
 - ALL MEASURED DISTANCES ARE GRID.
COMBINED SCALE FACTOR: .99973137 CALCULATED FROM THE E. 1/4 CORNER OF SECTION 4, T5N, R67W.
 - OPERATOR: TOBY OSBORN / PDOP = 1.9
 - WELL FOOTAGES ARE MEASURED AT RIGHT ANGLES TO THE SECTION LINES.



LOVELAND OFFICE
6706 North Franklin Avenue
Loveland, Colorado 80538
Phone 970-776-4331

SHERIDAN OFFICE
1095 Saberton Avenue
Sheridan, Wyoming 82801
Phone 307-674-0609

**Kerr-McGee Oil &
Gas Onshore LP**
1099 18th Street
Denver, Colorado 80202

WELL PAD - SCHMERGE 9-4HZ

**SCHMERGE 4-14HZ
WELL LOCATION CERTIFICATE**
1838' FSL & 509' FEL (NESE) (SURFACE HOLE LOCATION)
1702' FSL & 1161' FEL (NESE) (HEEL LOCATION)
LOCATED IN SECTION 4
1994' FSL & 140' FEL (NESE) (BOTTOM HOLE LOCATION)
LOCATED IN SECTION 3
T5N, R67W, 6TH P.M.
WELD COUNTY, COLORADO

DRAFTED BY:	SJM	CHECKED BY:	RKF
DATE DRAFTED:	12/14/22	DATE SURVEYED:	11/3/22
REVISED:	10/13/23	FILE NAME:	22-97