



SUPPLEMENT

OF SECS. 1, 2, 3, 4, 5, 7, 8 and 9 in Res

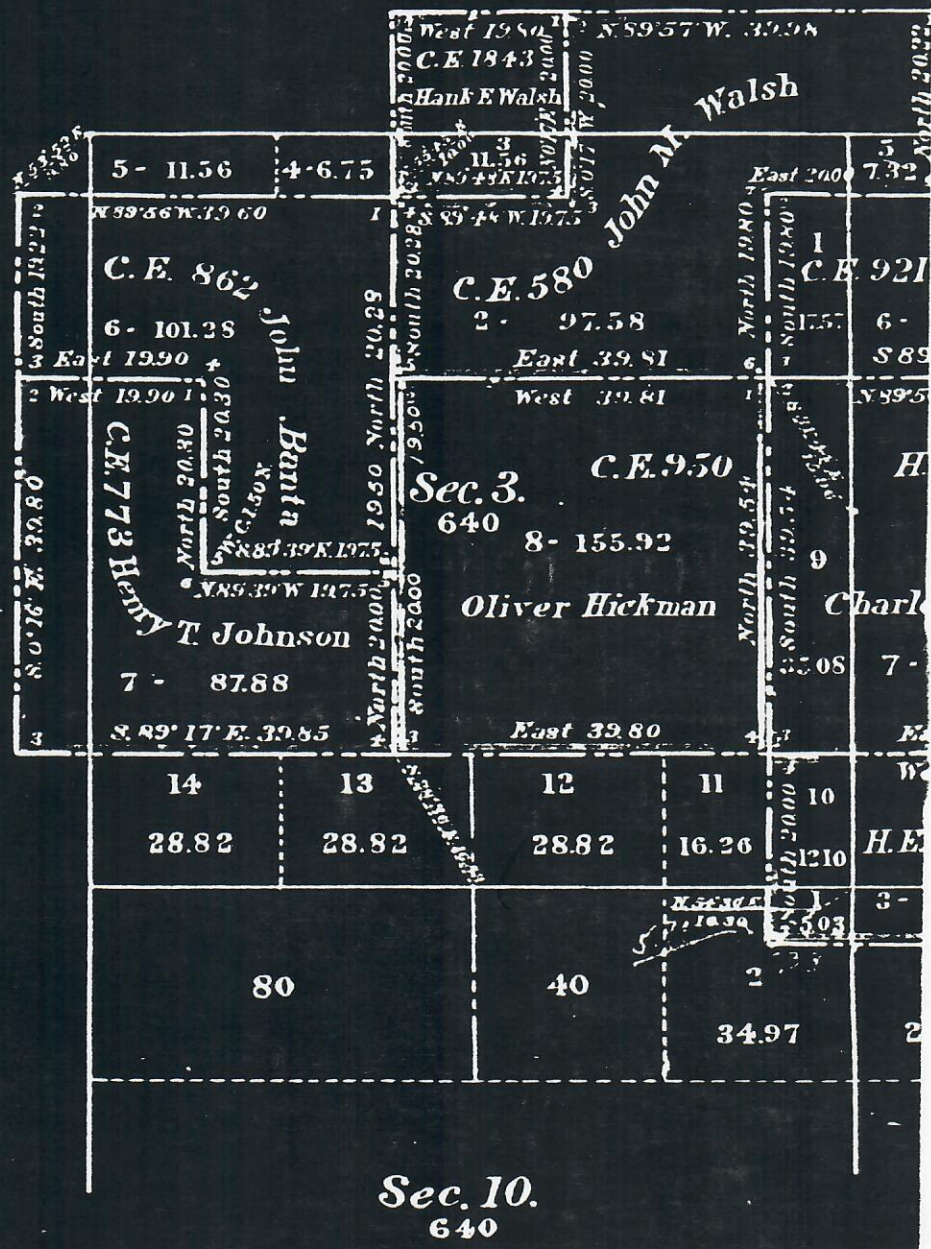
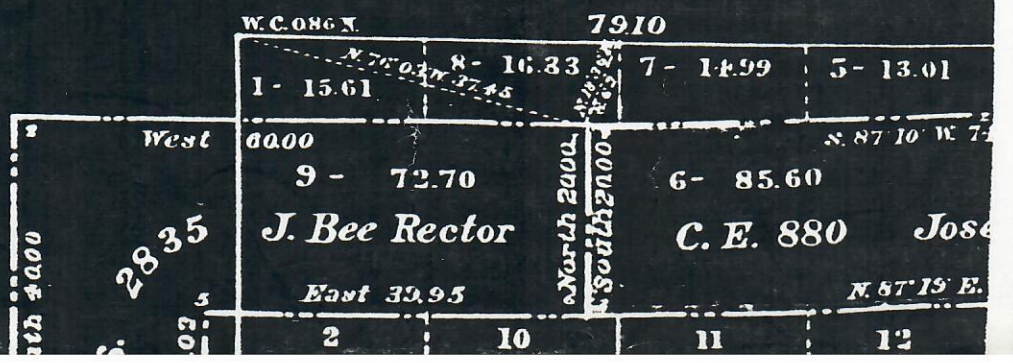


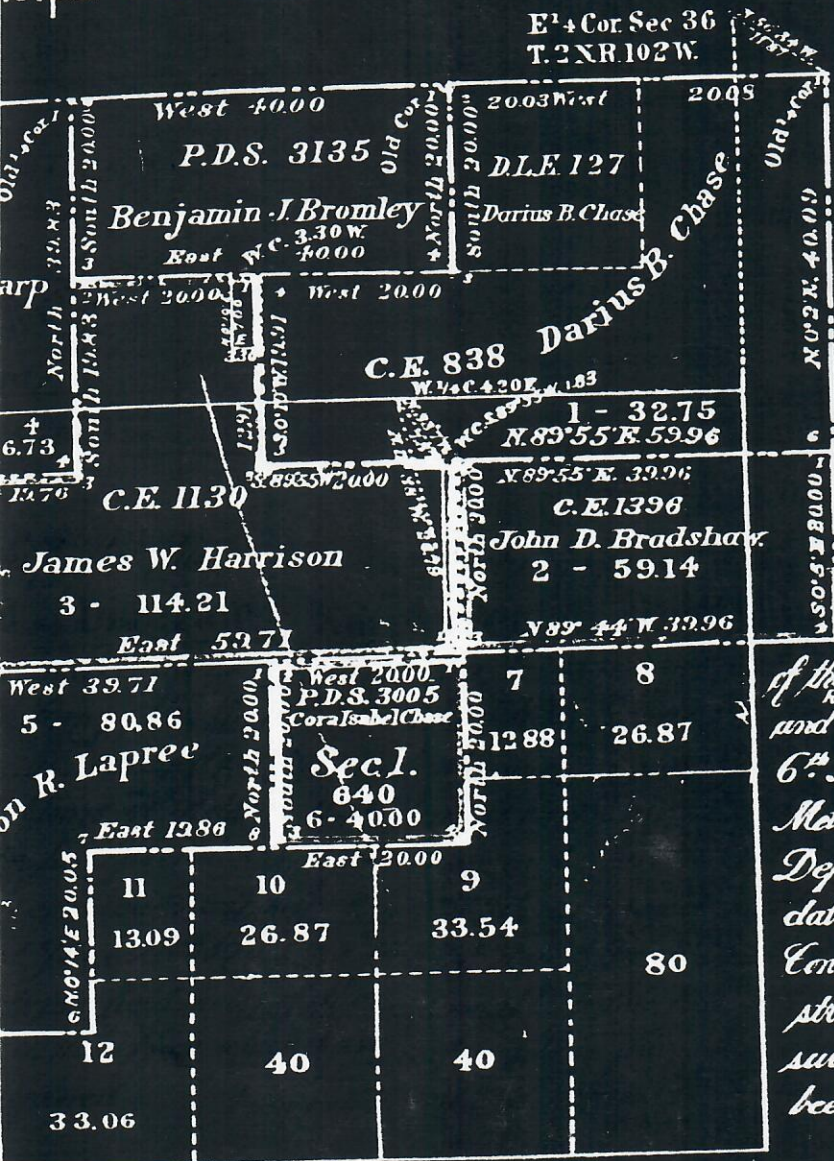
Table of Mileage				
Surveys Designated	Me.	Amount	Chs	When Surveyed
Meter and Bounds	29	42	39	May 17-22 1905
Connections	2	73	27	" " "

Scale 20 Chains to 1 Inch.



RAM

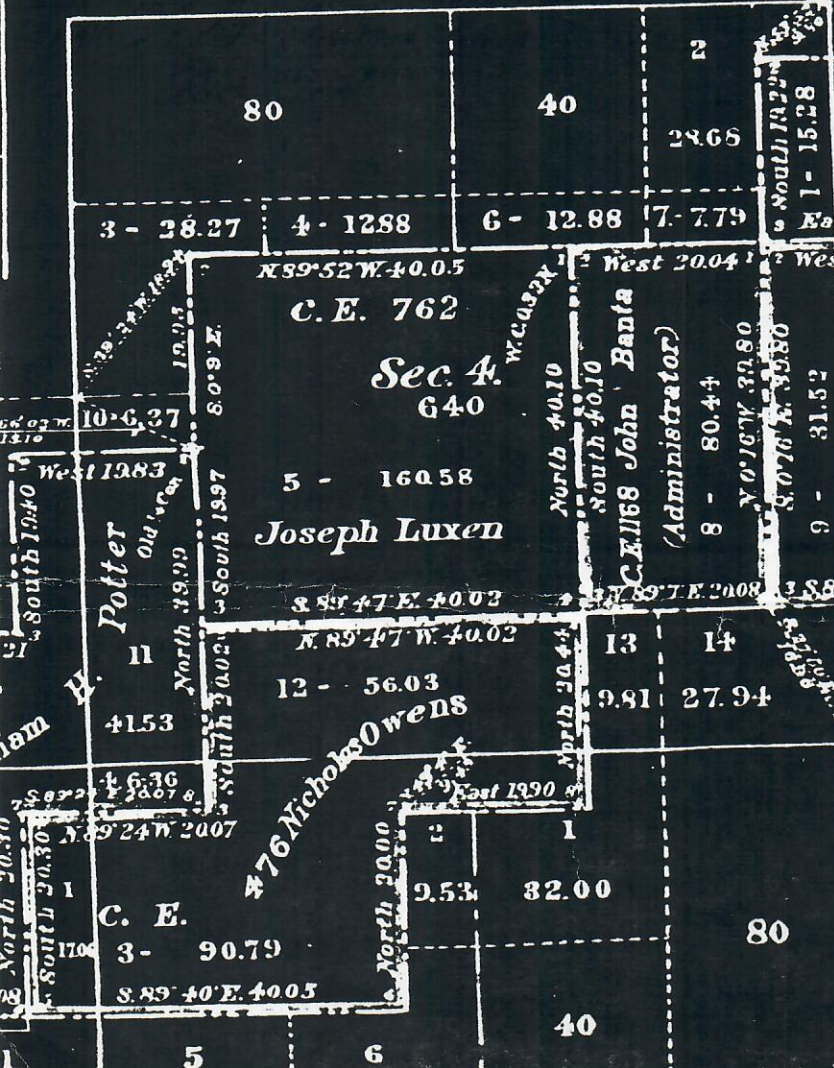
Principal Meridian.



I hereby certify that this
Supplemental Diagram

of the Survey of Claims in Sections 1, 2, 3, 4, 5, 7, 8
and 9 in Township 1 North, Range 102 West of the
6th Principal Meridian, as surveyed out by
Metes and Bounds by Monroe C. Adams U.S.
Deputy Surveyor under his Special Instructions
dated Aug. 4th 1904 in connection with his
Contract No. 833 dated June 23rd 1904, is
strictly conformable to the field notes of the
survey thereof on file in this office which have
been examined and approved

U.S. Surveyor General's Office
 Denver, Colo. Feb. 27th 1906
W. G. Lewis
 Sur. Genl.



C. E. 862
 John Banta
 C. E. 773
 Henry T. Johnson