

Project: Rio Blanco County, CO  
Site: ELU A18 495 Pad  
Well: ELU A18 FED 25D-12 496  
Wellbore: Wellbore #1  
Design: Design #4  
Latitude: 39.708969  
Longitude: -108.103807  
Ground Level: 8029.0  
RKB @ 8059.0usft (30')

PROJECT DETAILS: Rio Blanco County, CO

Geodetic System: Universal Transverse Mercator (US Survey Feet)  
Datum: NAD 1927 - Western US  
Ellipsoid: Clarke 1866  
Zone: Zone 12N (114 W to 108 W)  
System Datum: Mean Sea Level

REFERENCE INFORMATION

Vertical (TVD) Reference: RKB @ 8059.0usft (30')  
Section (VS) Reference: Slot - 25D-12(0.0N, 0.0E)  
Measured Depth Reference: RKB @ 8059.0usft (30')  
Calculation Method: Minimum Curvature

SECTION DETAILS

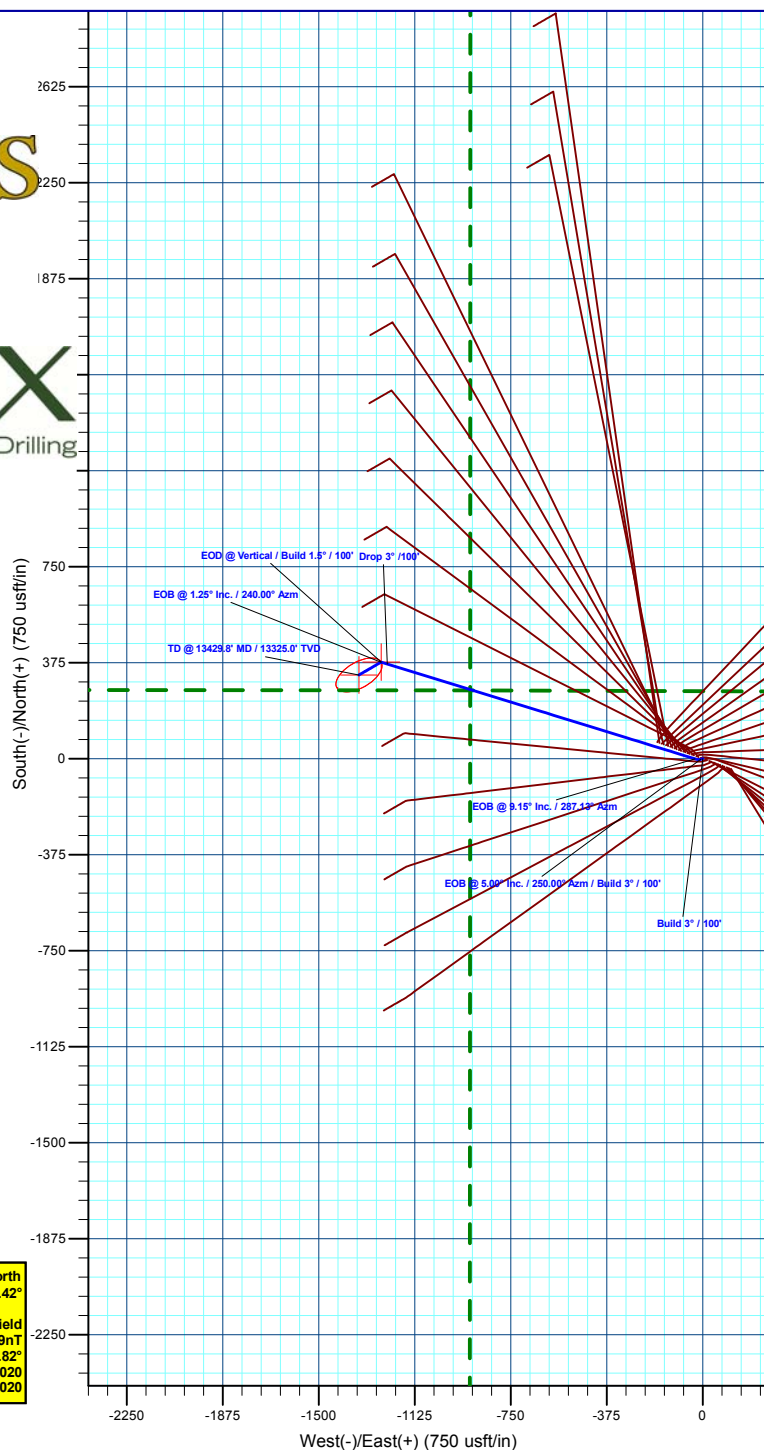
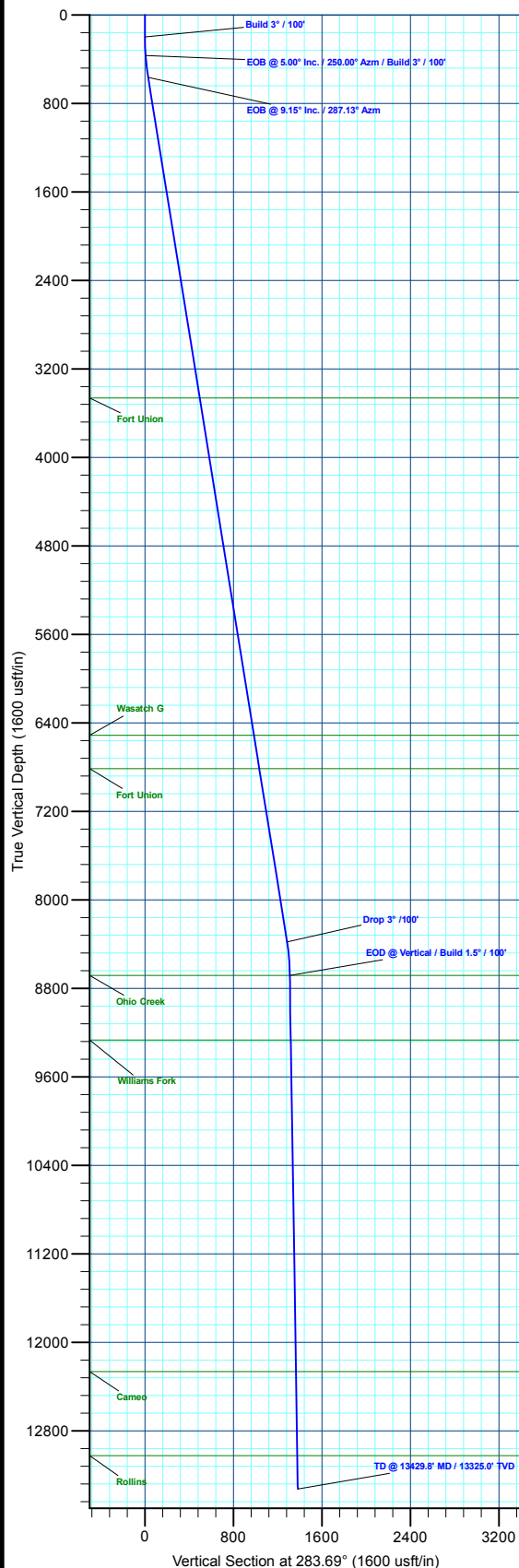
MD	Inc	Azi	TVD	+N/-S	+E/-W	Dleg	TFace	VSect	Annotation
0.0	0.00	0.00	0.0	0.0	0.0	0.00	0.00	0.0	
200.0	0.00	0.00	200.0	0.0	0.0	0.00	0.00	0.0	Build 3° / 100'
366.7	5.00	250.00	366.5	-2.5	-6.8	3.00	250.00	6.0	EOB @ 5.00° Inc. / 250.00° Azm / Build 3° / 100'
565.8	9.15	287.13	564.1	-0.8	-30.1	3.00	67.25	29.1	EOB @ 9.15° Inc. / 287.13° Azm
8481.7	9.15	287.13	8379.3	369.9	-1232.9	0.00	0.00	1285.4	Drop 3° / 100'
8786.7	0.00	0.00	8683.0	377.0	-1256.1	3.00	180.00	1309.7	EOD @ Vertical / Build 1.5° / 100'
8869.7	1.25	240.00	8766.0	376.6	-1256.9	1.50	240.00	1310.3	EOB @ 1.25° Inc. / 240.00° Azm
13429.8	1.25	240.00	13325.0	327.1	-1342.7	0.00	0.00	1382.0	TD @ 13429.8' MD / 13325.0' TVD

DESIGN TARGET DETAILS

Name	TVD	+N/-S	+E/-W	Northing	Easting	Latitude	Longitude
25D-12 - OHCR	8683.0	377.0	-1256.1	14433568.87	2453749.14	39.710004	-108.108270
25D-12 - PBHL	13325.0	327.1	-1342.7	14433516.10	2453664.20	39.709867	-108.108578

WELL DETAILS: ELU A18 FED 25D-12 496

+N/-S	+E/-W	Ground Level : 8029.0	Northing	Easting	Latitude	Longitude
0.0	0.0		14433232.60	2455016.80	39.708969	-108.103807
						25D-12



Plan: Design #4 (ELU A18 FED 25D-12 496/Wellbore #1)

Created By: Will Jircik

Date: 3:17, October 05 2023



## **Caerus Oil & Gas**

**Rio Blanco County, CO**

**ELU A18 495 Pad**

**ELU A18 FED 25D-12 496 - Slot 25D-12**

**Wellbore #1**

**Plan: Design #4**

## **KLX Well Planning Report**

**05 October, 2023**



<b>Database:</b>	EDM 5000.1 Single User Db	<b>Local Co-ordinate Reference:</b>	Well ELU A18 FED 25D-12 496 - Slot 25D-12
<b>Company:</b>	Caerus Oil & Gas	<b>TVD Reference:</b>	RKB @ 8059.0usft (30')
<b>Project:</b>	Rio Blanco County, CO	<b>MD Reference:</b>	RKB @ 8059.0usft (30')
<b>Site:</b>	ELU A18 495 Pad	<b>North Reference:</b>	True
<b>Well:</b>	ELU A18 FED 25D-12 496	<b>Survey Calculation Method:</b>	Minimum Curvature
<b>Wellbore:</b>	Wellbore #1		
<b>Design:</b>	Design #4		

<b>Project</b>	Rio Blanco County, CO		
<b>Map System:</b>	Universal Transverse Mercator (US Survey Fee	<b>System Datum:</b>	Mean Sea Level
<b>Geo Datum:</b>	NAD 1927 - Western US		
<b>Map Zone:</b>	Zone 12N (114 W to 108 W)		

<b>Site</b>	ELU A18 495 Pad			
<b>Site Position:</b>		<b>Northing:</b>	14,433,279.80 usft	<b>Latitude:</b> 39.709109
<b>From:</b> Map		<b>Easting:</b>	2,454,904.40 usft	<b>Longitude:</b> -108.104201
<b>Position Uncertainty:</b>	0.0 usft	<b>Slot Radius:</b>	13-3/16 "	<b>Grid Convergence:</b> 1.85 °

<b>Well</b>	ELU A18 FED 25D-12 496 - Slot 25D-12			
<b>Well Position</b>	<b>+N/-S</b>	-50.8 usft	<b>Northing:</b>	14,433,232.60 usft
	<b>+E/-W</b>	110.8 usft	<b>Easting:</b>	2,455,016.80 usft
<b>Position Uncertainty</b>		0.0 usft	<b>Wellhead Elevation:</b>	<b>Latitude:</b> 39.708969
				<b>Longitude:</b> -108.103807
				<b>Ground Level:</b> 8,029.0 usft

<b>Wellbore</b>	Wellbore #1				
<b>Magnetics</b>	<b>Model Name</b>	<b>Sample Date</b>	<b>Declination (°)</b>	<b>Dip Angle (°)</b>	<b>Field Strength (nT)</b>
	HDGM2020	8/17/2020	9.42	65.82	51,156.90000000

<b>Design</b>	Design #4			
<b>Audit Notes:</b>				
<b>Version:</b>	<b>Phase:</b>	PLAN	<b>Tie On Depth:</b>	0.0
<b>Vertical Section:</b>	<b>Depth From (TVD) (usft)</b>	<b>+N/-S (usft)</b>	<b>+E/-W (usft)</b>	<b>Direction (°)</b>
	0.0	0.0	0.0	283.69

<b>Plan Sections</b>										
Measured Depth (usft)	Inclination (°)	Azimuth (°)	Vertical Depth (usft)	+N/-S (usft)	+E/-W (usft)	Dogleg Rate (°/100usft)	Build Rate (°/100usft)	Turn Rate (°/100usft)	TFO (°)	Target
0.0	0.00	0.00	0.0	0.0	0.0	0.00	0.00	0.00	0.00	
200.0	0.00	0.00	200.0	0.0	0.0	0.00	0.00	0.00	0.00	
366.7	5.00	250.00	366.5	-2.5	-6.8	3.00	3.00	0.00	250.00	
565.8	9.15	287.13	564.1	-0.8	-30.1	3.00	2.08	18.65	67.25	
8,481.7	9.15	287.13	8,379.3	369.9	-1,232.9	0.00	0.00	0.00	0.00	
8,786.7	0.00	0.00	8,683.0	377.0	-1,256.1	3.00	-3.00	0.00	180.00	25D-12 - OHCR
8,869.7	1.25	240.00	8,766.0	376.6	-1,256.9	1.50	1.50	-144.55	240.00	
13,429.8	1.25	240.00	13,325.0	327.1	-1,342.7	0.00	0.00	0.00	0.00	25D-12 - PBHL

<b>Database:</b>	EDM 5000.1 Single User Db	<b>Local Co-ordinate Reference:</b>	Well ELU A18 FED 25D-12 496 - Slot 25D-12
<b>Company:</b>	Caerus Oil & Gas	<b>TVD Reference:</b>	RKB @ 8059.0usft (30')
<b>Project:</b>	Rio Blanco County, CO	<b>MD Reference:</b>	RKB @ 8059.0usft (30')
<b>Site:</b>	ELU A18 495 Pad	<b>North Reference:</b>	True
<b>Well:</b>	ELU A18 FED 25D-12 496	<b>Survey Calculation Method:</b>	Minimum Curvature
<b>Wellbore:</b>	Wellbore #1		
<b>Design:</b>	Design #4		

Planned Survey									
Measured Depth (usft)	Inclination (°)	Azimuth (°)	Vertical Depth (usft)	+N/-S (usft)	+E/-W (usft)	Vertical Section (usft)	Dogleg Rate (°/100usft)	Build Rate (°/100usft)	Turn Rate (°/100usft)
0.0	0.00	0.00	0.0	0.0	0.0	0.0	0.00	0.00	0.00
100.0	0.00	0.00	100.0	0.0	0.0	0.0	0.00	0.00	0.00
<b>Build 3° / 100'</b>									
200.0	0.00	0.00	200.0	0.0	0.0	0.0	0.00	0.00	0.00
300.0	3.00	250.00	300.0	-0.9	-2.5	2.2	3.00	3.00	0.00
<b>EOB @ 5.00° Inc. / 250.00° Azm / Build 3° / 100'</b>									
366.7	5.00	250.00	366.5	-2.5	-6.8	6.0	3.00	3.00	0.00
400.0	5.46	259.73	399.7	-3.3	-9.8	8.7	3.00	1.39	29.19
500.0	7.51	279.48	499.0	-3.0	-20.9	19.6	3.00	2.05	19.75
<b>EOB @ 9.15° Inc. / 287.13° Azm</b>									
565.8	9.15	287.13	564.1	-0.8	-30.1	29.1	3.00	2.49	11.63
600.0	9.15	287.13	597.9	0.8	-35.3	34.5	0.00	0.00	0.00
700.0	9.15	287.13	696.6	5.5	-50.5	50.4	0.00	0.00	0.00
800.0	9.15	287.13	795.3	10.2	-65.7	66.3	0.00	0.00	0.00
900.0	9.15	287.13	894.1	14.9	-80.9	82.1	0.00	0.00	0.00
1,000.0	9.15	287.13	992.8	19.5	-96.1	98.0	0.00	0.00	0.00
1,100.0	9.15	287.13	1,091.5	24.2	-111.3	113.9	0.00	0.00	0.00
1,200.0	9.15	287.13	1,190.3	28.9	-126.5	129.7	0.00	0.00	0.00
1,300.0	9.15	287.13	1,289.0	33.6	-141.7	145.6	0.00	0.00	0.00
1,400.0	9.15	287.13	1,387.7	38.3	-156.9	161.5	0.00	0.00	0.00
1,500.0	9.15	287.13	1,486.4	43.0	-172.1	177.4	0.00	0.00	0.00
1,600.0	9.15	287.13	1,585.2	47.6	-187.3	193.2	0.00	0.00	0.00
1,700.0	9.15	287.13	1,683.9	52.3	-202.5	209.1	0.00	0.00	0.00
1,800.0	9.15	287.13	1,782.6	57.0	-217.7	225.0	0.00	0.00	0.00
1,900.0	9.15	287.13	1,881.3	61.7	-232.9	240.8	0.00	0.00	0.00
2,000.0	9.15	287.13	1,980.1	66.4	-248.1	256.7	0.00	0.00	0.00
2,100.0	9.15	287.13	2,078.8	71.1	-263.2	272.6	0.00	0.00	0.00
2,200.0	9.15	287.13	2,177.5	75.7	-278.4	288.5	0.00	0.00	0.00
2,300.0	9.15	287.13	2,276.3	80.4	-293.6	304.3	0.00	0.00	0.00
2,400.0	9.15	287.13	2,375.0	85.1	-308.8	320.2	0.00	0.00	0.00
2,500.0	9.15	287.13	2,473.7	89.8	-324.0	336.1	0.00	0.00	0.00
2,600.0	9.15	287.13	2,572.4	94.5	-339.2	351.9	0.00	0.00	0.00
2,700.0	9.15	287.13	2,671.2	99.2	-354.4	367.8	0.00	0.00	0.00
2,800.0	9.15	287.13	2,769.9	103.8	-369.6	383.7	0.00	0.00	0.00
2,900.0	9.15	287.13	2,868.6	108.5	-384.8	399.6	0.00	0.00	0.00
3,000.0	9.15	287.13	2,967.4	113.2	-400.0	415.4	0.00	0.00	0.00
3,100.0	9.15	287.13	3,066.1	117.9	-415.2	431.3	0.00	0.00	0.00
3,200.0	9.15	287.13	3,164.8	122.6	-430.4	447.2	0.00	0.00	0.00
3,300.0	9.15	287.13	3,263.5	127.2	-445.6	463.0	0.00	0.00	0.00
3,400.0	9.15	287.13	3,362.3	131.9	-460.8	478.9	0.00	0.00	0.00
3,500.0	9.15	287.13	3,461.0	136.6	-476.0	494.8	0.00	0.00	0.00
<b>Wasatch</b>									
3,503.0	9.15	287.13	3,464.0	136.8	-476.4	495.3	0.00	0.00	0.00
3,600.0	9.15	287.13	3,559.7	141.3	-491.2	510.7	0.00	0.00	0.00
3,700.0	9.15	287.13	3,658.5	146.0	-506.4	526.5	0.00	0.00	0.00
3,800.0	9.15	287.13	3,757.2	150.7	-521.6	542.4	0.00	0.00	0.00
3,900.0	9.15	287.13	3,855.9	155.3	-536.7	558.3	0.00	0.00	0.00
4,000.0	9.15	287.13	3,954.6	160.0	-551.9	574.1	0.00	0.00	0.00
4,100.0	9.15	287.13	4,053.4	164.7	-567.1	590.0	0.00	0.00	0.00
4,200.0	9.15	287.13	4,152.1	169.4	-582.3	605.9	0.00	0.00	0.00
4,300.0	9.15	287.13	4,250.8	174.1	-597.5	621.7	0.00	0.00	0.00
4,400.0	9.15	287.13	4,349.5	178.8	-612.7	637.6	0.00	0.00	0.00
4,500.0	9.15	287.13	4,448.3	183.4	-627.9	653.5	0.00	0.00	0.00
4,600.0	9.15	287.13	4,547.0	188.1	-643.1	669.4	0.00	0.00	0.00

<b>Database:</b>	EDM 5000.1 Single User Db	<b>Local Co-ordinate Reference:</b>	Well ELU A18 FED 25D-12 496 - Slot 25D-12
<b>Company:</b>	Caerus Oil & Gas	<b>TVD Reference:</b>	RKB @ 8059.0usft (30')
<b>Project:</b>	Rio Blanco County, CO	<b>MD Reference:</b>	RKB @ 8059.0usft (30')
<b>Site:</b>	ELU A18 495 Pad	<b>North Reference:</b>	True
<b>Well:</b>	ELU A18 FED 25D-12 496	<b>Survey Calculation Method:</b>	Minimum Curvature
<b>Wellbore:</b>	Wellbore #1		
<b>Design:</b>	Design #4		

Planned Survey									
Measured Depth (usft)	Inclination (°)	Azimuth (°)	Vertical Depth (usft)	+N/-S (usft)	+E/-W (usft)	Vertical Section (usft)	Dogleg Rate (°/100usft)	Build Rate (°/100usft)	Turn Rate (°/100usft)
4,700.0	9.15	287.13	4,645.7	192.8	-658.3	685.2	0.00	0.00	0.00
4,800.0	9.15	287.13	4,744.5	197.5	-673.5	701.1	0.00	0.00	0.00
4,900.0	9.15	287.13	4,843.2	202.2	-688.7	717.0	0.00	0.00	0.00
5,000.0	9.15	287.13	4,941.9	206.9	-703.9	732.8	0.00	0.00	0.00
5,100.0	9.15	287.13	5,040.6	211.5	-719.1	748.7	0.00	0.00	0.00
5,200.0	9.15	287.13	5,139.4	216.2	-734.3	764.6	0.00	0.00	0.00
5,300.0	9.15	287.13	5,238.1	220.9	-749.5	780.5	0.00	0.00	0.00
5,400.0	9.15	287.13	5,336.8	225.6	-764.7	796.3	0.00	0.00	0.00
5,500.0	9.15	287.13	5,435.6	230.3	-779.9	812.2	0.00	0.00	0.00
5,600.0	9.15	287.13	5,534.3	235.0	-795.1	828.1	0.00	0.00	0.00
5,700.0	9.15	287.13	5,633.0	239.6	-810.2	843.9	0.00	0.00	0.00
5,800.0	9.15	287.13	5,731.7	244.3	-825.4	859.8	0.00	0.00	0.00
5,900.0	9.15	287.13	5,830.5	249.0	-840.6	875.7	0.00	0.00	0.00
6,000.0	9.15	287.13	5,929.2	253.7	-855.8	891.6	0.00	0.00	0.00
6,100.0	9.15	287.13	6,027.9	258.4	-871.0	907.4	0.00	0.00	0.00
6,200.0	9.15	287.13	6,126.6	263.0	-886.2	923.3	0.00	0.00	0.00
6,300.0	9.15	287.13	6,225.4	267.7	-901.4	939.2	0.00	0.00	0.00
6,400.0	9.15	287.13	6,324.1	272.4	-916.6	955.0	0.00	0.00	0.00
6,500.0	9.15	287.13	6,422.8	277.1	-931.8	970.9	0.00	0.00	0.00
<b>Wasatch G</b>									
6,591.3	9.15	287.13	6,513.0	281.4	-945.7	985.4	0.00	0.00	0.00
6,600.0	9.15	287.13	6,521.6	281.8	-947.0	986.8	0.00	0.00	0.00
6,700.0	9.15	287.13	6,620.3	286.5	-962.2	1,002.7	0.00	0.00	0.00
6,800.0	9.15	287.13	6,719.0	291.1	-977.4	1,018.5	0.00	0.00	0.00
<b>Fort Union</b>									
6,895.2	9.15	287.13	6,813.0	295.6	-991.9	1,033.6	0.00	0.00	0.00
6,900.0	9.15	287.13	6,817.7	295.8	-992.6	1,034.4	0.00	0.00	0.00
7,000.0	9.15	287.13	6,916.5	300.5	-1,007.8	1,050.3	0.00	0.00	0.00
7,100.0	9.15	287.13	7,015.2	305.2	-1,023.0	1,066.1	0.00	0.00	0.00
7,200.0	9.15	287.13	7,113.9	309.9	-1,038.2	1,082.0	0.00	0.00	0.00
7,300.0	9.15	287.13	7,212.7	314.6	-1,053.4	1,097.9	0.00	0.00	0.00
7,400.0	9.15	287.13	7,311.4	319.2	-1,068.6	1,113.7	0.00	0.00	0.00
7,500.0	9.15	287.13	7,410.1	323.9	-1,083.7	1,129.6	0.00	0.00	0.00
7,600.0	9.15	287.13	7,508.8	328.6	-1,098.9	1,145.5	0.00	0.00	0.00
7,700.0	9.15	287.13	7,607.6	333.3	-1,114.1	1,161.4	0.00	0.00	0.00
7,800.0	9.15	287.13	7,706.3	338.0	-1,129.3	1,177.2	0.00	0.00	0.00
7,900.0	9.15	287.13	7,805.0	342.7	-1,144.5	1,193.1	0.00	0.00	0.00
8,000.0	9.15	287.13	7,903.8	347.3	-1,159.7	1,209.0	0.00	0.00	0.00
8,100.0	9.15	287.13	8,002.5	352.0	-1,174.9	1,224.8	0.00	0.00	0.00
8,200.0	9.15	287.13	8,101.2	356.7	-1,190.1	1,240.7	0.00	0.00	0.00
8,300.0	9.15	287.13	8,199.9	361.4	-1,205.3	1,256.6	0.00	0.00	0.00
8,400.0	9.15	287.13	8,298.7	366.1	-1,220.5	1,272.5	0.00	0.00	0.00
<b>Drop 3° /100'</b>									
8,481.7	9.15	287.13	8,379.3	369.9	-1,232.9	1,285.4	0.00	0.00	0.00
8,500.0	8.60	287.13	8,397.4	370.7	-1,235.6	1,288.2	3.00	-3.00	0.00
8,600.0	5.60	287.13	8,496.6	374.4	-1,247.4	1,300.6	3.00	-3.00	0.00
8,700.0	2.60	287.13	8,596.4	376.5	-1,254.3	1,307.7	3.00	-3.00	0.00
<b>EOD @ Vertical / Build 1.5° / 100' - Ohio Creek</b>									
8,786.7	0.00	0.00	8,683.0	377.0	-1,256.1	1,309.7	3.00	-3.00	0.00
8,800.0	0.20	240.00	8,696.3	377.0	-1,256.2	1,309.7	1.50	1.50	0.00
<b>EOB @ 1.25° Inc. / 240.00° Azm</b>									
8,869.7	1.25	240.00	8,766.0	376.6	-1,256.9	1,310.3	1.50	1.50	0.00
8,900.0	1.25	240.00	8,796.3	376.3	-1,257.5	1,310.8	0.00	0.00	0.00

<b>Database:</b>	EDM 5000.1 Single User Db	<b>Local Co-ordinate Reference:</b>	Well ELU A18 FED 25D-12 496 - Slot 25D-12
<b>Company:</b>	Caerus Oil & Gas	<b>TVD Reference:</b>	RKB @ 8059.0usft (30')
<b>Project:</b>	Rio Blanco County, CO	<b>MD Reference:</b>	RKB @ 8059.0usft (30')
<b>Site:</b>	ELU A18 495 Pad	<b>North Reference:</b>	True
<b>Well:</b>	ELU A18 FED 25D-12 496	<b>Survey Calculation Method:</b>	Minimum Curvature
<b>Wellbore:</b>	Wellbore #1		
<b>Design:</b>	Design #4		

Planned Survey									
Measured Depth (usft)	Inclination (°)	Azimuth (°)	Vertical Depth (usft)	+N/-S (usft)	+E/-W (usft)	Vertical Section (usft)	Dogleg Rate (°/100usft)	Build Rate (°/100usft)	Turn Rate (°/100usft)
9,000.0	1.25	240.00	8,896.3	375.2	-1,259.4	1,312.4	0.00	0.00	0.00
9,100.0	1.25	240.00	8,996.3	374.1	-1,261.2	1,314.0	0.00	0.00	0.00
9,200.0	1.25	240.00	9,096.2	373.0	-1,263.1	1,315.5	0.00	0.00	0.00
9,300.0	1.25	240.00	9,196.2	371.9	-1,265.0	1,317.1	0.00	0.00	0.00
<b>Williams Fork</b>									
9,370.8	1.25	240.00	9,267.0	371.2	-1,266.3	1,318.2	0.00	0.00	0.00
9,400.0	1.25	240.00	9,296.2	370.8	-1,266.9	1,318.7	0.00	0.00	0.00
9,500.0	1.25	240.00	9,396.2	369.7	-1,268.8	1,320.2	0.00	0.00	0.00
9,600.0	1.25	240.00	9,496.2	368.7	-1,270.7	1,321.8	0.00	0.00	0.00
9,700.0	1.25	240.00	9,596.1	367.6	-1,272.5	1,323.4	0.00	0.00	0.00
9,800.0	1.25	240.00	9,696.1	366.5	-1,274.4	1,325.0	0.00	0.00	0.00
9,900.0	1.25	240.00	9,796.1	365.4	-1,276.3	1,326.5	0.00	0.00	0.00
10,000.0	1.25	240.00	9,896.1	364.3	-1,278.2	1,328.1	0.00	0.00	0.00
10,100.0	1.25	240.00	9,996.0	363.2	-1,280.1	1,329.7	0.00	0.00	0.00
10,200.0	1.25	240.00	10,096.0	362.1	-1,281.9	1,331.2	0.00	0.00	0.00
10,300.0	1.25	240.00	10,196.0	361.1	-1,283.8	1,332.8	0.00	0.00	0.00
10,400.0	1.25	240.00	10,296.0	360.0	-1,285.7	1,334.4	0.00	0.00	0.00
10,500.0	1.25	240.00	10,395.9	358.9	-1,287.6	1,336.0	0.00	0.00	0.00
10,600.0	1.25	240.00	10,495.9	357.8	-1,289.5	1,337.5	0.00	0.00	0.00
10,700.0	1.25	240.00	10,595.9	356.7	-1,291.4	1,339.1	0.00	0.00	0.00
10,800.0	1.25	240.00	10,695.9	355.6	-1,293.2	1,340.7	0.00	0.00	0.00
10,900.0	1.25	240.00	10,795.8	354.5	-1,295.1	1,342.2	0.00	0.00	0.00
11,000.0	1.25	240.00	10,895.8	353.5	-1,297.0	1,343.8	0.00	0.00	0.00
11,100.0	1.25	240.00	10,995.8	352.4	-1,298.9	1,345.4	0.00	0.00	0.00
11,200.0	1.25	240.00	11,095.8	351.3	-1,300.8	1,347.0	0.00	0.00	0.00
11,300.0	1.25	240.00	11,195.7	350.2	-1,302.7	1,348.5	0.00	0.00	0.00
11,400.0	1.25	240.00	11,295.7	349.1	-1,304.5	1,350.1	0.00	0.00	0.00
11,500.0	1.25	240.00	11,395.7	348.0	-1,306.4	1,351.7	0.00	0.00	0.00
11,600.0	1.25	240.00	11,495.7	346.9	-1,308.3	1,353.2	0.00	0.00	0.00
11,700.0	1.25	240.00	11,595.7	345.8	-1,310.2	1,354.8	0.00	0.00	0.00
11,800.0	1.25	240.00	11,695.6	344.8	-1,312.1	1,356.4	0.00	0.00	0.00
11,900.0	1.25	240.00	11,795.6	343.7	-1,313.9	1,358.0	0.00	0.00	0.00
12,000.0	1.25	240.00	11,895.6	342.6	-1,315.8	1,359.5	0.00	0.00	0.00
12,100.0	1.25	240.00	11,995.6	341.5	-1,317.7	1,361.1	0.00	0.00	0.00
12,200.0	1.25	240.00	12,095.5	340.4	-1,319.6	1,362.7	0.00	0.00	0.00
12,300.0	1.25	240.00	12,195.5	339.3	-1,321.5	1,364.2	0.00	0.00	0.00
<b>Cameo</b>									
12,368.5	1.25	240.00	12,264.0	338.6	-1,322.8	1,365.3	0.00	0.00	0.00
12,400.0	1.25	240.00	12,295.5	338.2	-1,323.4	1,365.8	0.00	0.00	0.00
12,500.0	1.25	240.00	12,395.5	337.2	-1,325.2	1,367.4	0.00	0.00	0.00
12,600.0	1.25	240.00	12,495.4	336.1	-1,327.1	1,369.0	0.00	0.00	0.00
12,700.0	1.25	240.00	12,595.4	335.0	-1,329.0	1,370.5	0.00	0.00	0.00
12,800.0	1.25	240.00	12,695.4	333.9	-1,330.9	1,372.1	0.00	0.00	0.00
12,900.0	1.25	240.00	12,795.4	332.8	-1,332.8	1,373.7	0.00	0.00	0.00
13,000.0	1.25	240.00	12,895.3	331.7	-1,334.6	1,375.2	0.00	0.00	0.00
13,100.0	1.25	240.00	12,995.3	330.6	-1,336.5	1,376.8	0.00	0.00	0.00
<b>Rollins</b>									
13,129.7	1.25	240.00	13,025.0	330.3	-1,337.1	1,377.3	0.00	0.00	0.00
13,200.0	1.25	240.00	13,095.3	329.5	-1,338.4	1,378.4	0.00	0.00	0.00
13,300.0	1.25	240.00	13,195.3	328.5	-1,340.3	1,380.0	0.00	0.00	0.00
13,400.0	1.25	240.00	13,295.3	327.4	-1,342.2	1,381.5	0.00	0.00	0.00
<b>TD @ 13429.8' MD / 13325.0' TVD</b>									
13,429.8	1.25	240.00	13,325.0	327.1	-1,342.7	1,382.0	0.00	0.00	0.00

<b>Database:</b>	EDM 5000.1 Single User Db	<b>Local Co-ordinate Reference:</b>	Well ELU A18 FED 25D-12 496 - Slot 25D-12
<b>Company:</b>	Caerus Oil & Gas	<b>TVD Reference:</b>	RKB @ 8059.0usft (30')
<b>Project:</b>	Rio Blanco County, CO	<b>MD Reference:</b>	RKB @ 8059.0usft (30')
<b>Site:</b>	ELU A18 495 Pad	<b>North Reference:</b>	True
<b>Well:</b>	ELU A18 FED 25D-12 496	<b>Survey Calculation Method:</b>	Minimum Curvature
<b>Wellbore:</b>	Wellbore #1		
<b>Design:</b>	Design #4		

#### Design Targets

##### Target Name

- hit/miss target	Dip Angle (°)	Dip Dir. (°)	TVD (usft)	+N/-S (usft)	+E/-W (usft)	Northing (usft)	Easting (usft)	Latitude	Longitude
- Shape									
25D-12 - OHCR	0.00	0.00	8,683.0	377.0	-1,256.1	14,433,568.87	2,453,749.15	39.710004	-108.108270
- plan hits target center									
- Point									
25D-12 - PBHL	0.00	0.00	13,325.0	327.1	-1,342.7	14,433,516.10	2,453,664.20	39.709867	-108.108578
- plan hits target center									
- Ellipse (radii L100.0 W50.0 on 240.00 azi)									

#### Formations

Measured Depth (usft)	Vertical Depth (usft)	Name	Lithology	Dip (°)	Dip Direction (°)
3,503.0	3,464.0	Wasatch			
6,591.3	6,513.0	Wasatch G			
6,895.2	6,813.0	Fort Union			
8,786.7	8,683.0	Ohio Creek			
9,370.8	9,267.0	Williams Fork			
12,368.5	12,264.0	Cameo			
13,129.7	13,025.0	Rollins			

#### Plan Annotations

Measured Depth (usft)	Vertical Depth (usft)	Local Coordinates		Comment
		+N/-S (usft)	+E/-W (usft)	
200.0	200.0	0.0	0.0	Build 3° / 100'
366.7	366.5	-2.5	-6.8	EOB @ 5.00° Inc. / 250.00° Azm / Build 3° / 100'
565.8	564.1	-0.8	-30.1	EOB @ 9.15° Inc. / 287.13° Azm
8,481.7	8,379.3	369.9	-1,232.9	Drop 3° / 100'
8,786.7	8,683.0	377.0	-1,256.1	EOD @ Vertical / Build 1.5° / 100'
8,869.7	8,766.0	376.6	-1,256.9	EOB @ 1.25° Inc. / 240.00° Azm
13,429.8	13,325.0	327.1	-1,342.7	TD @ 13429.8' MD / 13325.0' TVD