

Project: Rio Blanco County, CO  
Site: ELU A18 495 Pad  
Well: ELU A18 FED 13B-7 495  
Wellbore: Wellbore #1  
Design: Design #4  
Latitude: 39.709137  
Longitude: -108.104408  
Ground Level: 8029.0  
RKB @ 8059.0usft (30')

PROJECT DETAILS: Rio Blanco County, CO  
Geodetic System: Universal Transverse Mercator (US Survey Feet)  
Datum: NAD 1927 - Western US  
Ellipsoid: Clarke 1866  
Zone: Zone 12N (114 W to 108 W)  
System Datum: Mean Sea Level

REFERENCE INFORMATION  
Vertical (TVD) Reference: RKB @ 8059.0usft (30')  
Section (VS) Reference: Slot - 13B-7(0.0N, 0.0E)  
Measured Depth Reference: RKB @ 8059.0usft (30')  
Calculation Method: Minimum Curvature

#### FORMATION TOP DETAILS

TVDPath	MDPath	Formation
3505.0	3686.1	Wasatch
6622.0	7005.4	Wasatch G
6922.0	7324.9	Fort Union
8809.0	9305.4	Ohio Creek
9408.0	9904.6	Williams Fork
12517.0	13014.3	Cameo
13151.0	13648.4	Rollins

#### SECTION DETAILS

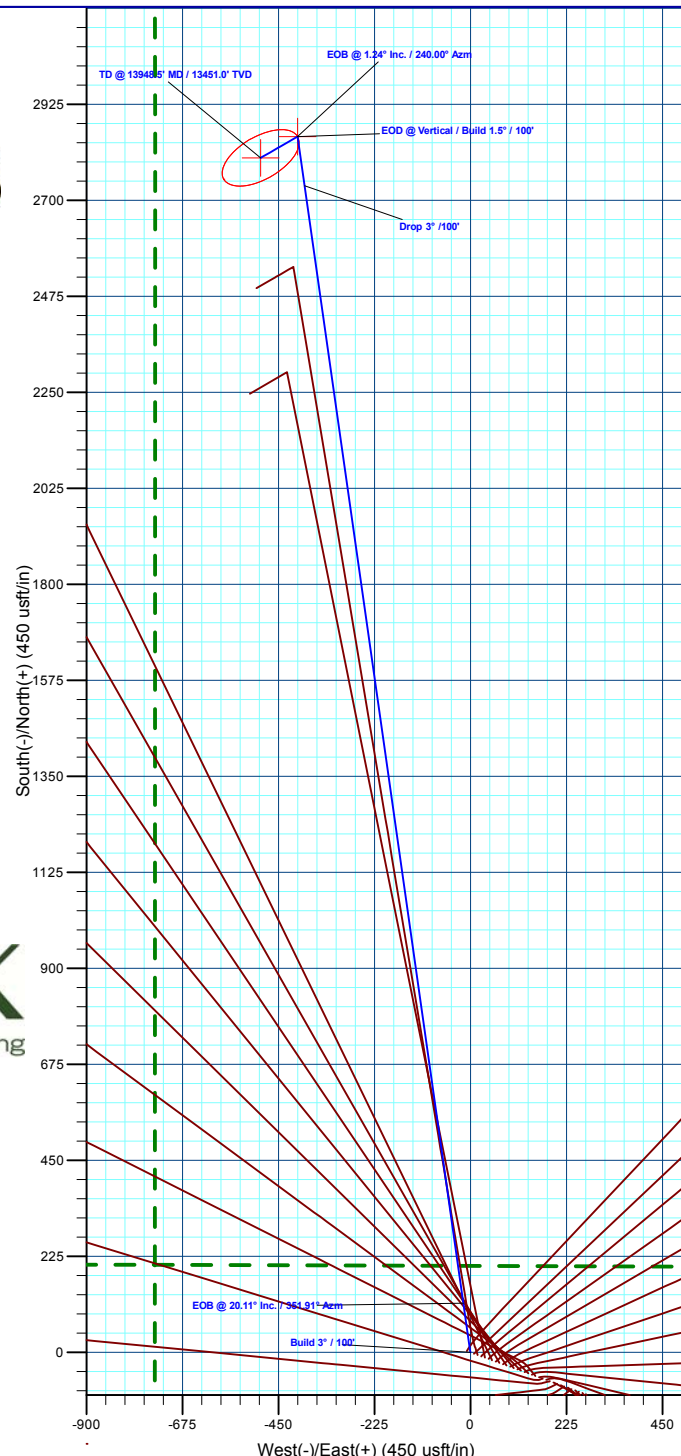
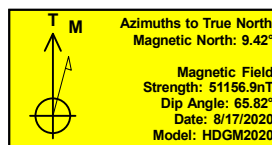
MD	Inc	Azi	TVD	+N/-S	+E/-W	Dleg	TFace	VSect	Annotation
0.0	0.00	0.00	0.0	0.0	0.0	0.00	0.00	0.0	
270.0	0.00	0.00	270.0	0.0	0.0	0.00	0.00	0.0	Build 3" / 100'
940.3	20.11	351.91	926.6	115.3	-16.4	3.00	351.91	116.4	EOB @ 20.11" Inc. / 351.91" Azm
8635.1	20.11	351.91	8152.4	2734.5	-388.6	0.00	0.00	2760.5	Drop 3" / 100'
9305.4	0.00	0.00	8809.0	2849.7	-405.0	3.00	180.00	2876.8	EOB @ Vertical / Build 1.5" / 100'
9388.4	1.25	240.00	8892.0	2849.3	-405.8	1.50	240.00	2876.5	EOB @ 1.24" Inc. / 240.00" Azm
13948.5	1.25	240.00	13451.0	2799.7	-491.6	0.00	0.00	2842.6	TD @ 13948.5' MD / 13451.0' TVD

#### DESIGN TARGET DETAILS

Name	TVD	+N/-S	+E/-W	Northing	Easting	Latitude	Longitude
13B-7 - OHCR	8809.0	2849.7	-405.0	14436123.57	2454348.74	39.716958	-108.105848
13B-7 - PBHL	13451.0	2799.7	-491.6	14436070.80	2454263.80	39.716821	-108.106155

#### WELL DETAILS: ELU A18 FED 13B-7 495

		Ground Level : 8029.0					
+N/-S	+E/-W	Northing	Easting	Latitude	Longitude		
0.0	0.0	14433288.40	2454845.60	39.709137	-108.104408	13B-7	



Plan: Design #4 (ELU A18 FED 13B-7 495/Wellbore #1)

Created By: Will Jircik

Date: 4:08, October 05 2023



## **Caerus Oil & Gas**

**Rio Blanco County, CO**

**ELU A18 495 Pad**

**ELU A18 FED 13B-7 495 - Slot 13B-7**

**Wellbore #1**

**Plan: Design #4**

## **KLX Well Planning Report**

**04 October, 2023**



<b>Database:</b>	EDM 5000.1 Single User Db	<b>Local Co-ordinate Reference:</b>	Well ELU A18 FED 13B-7 495 - Slot 13B-7
<b>Company:</b>	Caerus Oil & Gas	<b>TVD Reference:</b>	RKB @ 8059.0usft (30')
<b>Project:</b>	Rio Blanco County, CO	<b>MD Reference:</b>	RKB @ 8059.0usft (30')
<b>Site:</b>	ELU A18 495 Pad	<b>North Reference:</b>	True
<b>Well:</b>	ELU A18 FED 13B-7 495	<b>Survey Calculation Method:</b>	Minimum Curvature
<b>Wellbore:</b>	Wellbore #1		
<b>Design:</b>	Design #4		

<b>Project</b>	Rio Blanco County, CO		
<b>Map System:</b>	Universal Transverse Mercator (US Survey Fee	<b>System Datum:</b>	Mean Sea Level
<b>Geo Datum:</b>	NAD 1927 - Western US		
<b>Map Zone:</b>	Zone 12N (114 W to 108 W)		

Site		ELU A18 495 Pad				
Site Position:		Northing:	14,433,279.80 usft	Latitude:	39.709109	
From:	Map	Easting:	2,454,904.40 usft	Longitude:	-108.104201	
Position Uncertainty:		0.0 usft	Slot Radius:	13-3/16 "	Grid Convergence:	1.85 °

Well	ELU A18 FED 13B-7 495 - Slot 13B-7					
Well Position	+N/-S	10.5 usft	Northing:	14,433,288.40 usft	Latitude:	39.709137
	+E/-W	-58.5 usft	Easting:	2,454,845.60 usft	Longitude:	-108.104409
Position Uncertainty		0.0 usft	Wellhead Elevation:		Ground Level:	8,029.0 usft

<b>Wellbore</b>	Wellbore #1				
<b>Magnetics</b>	<b>Model Name</b>	<b>Sample Date</b>	<b>Declination (°)</b>	<b>Dip Angle (°)</b>	<b>Field Strength (nT)</b>
	HDGM2020	8/17/2020	9.42	65.82	51,156.90000000

<b>Design</b>	Design #4			
<b>Audit Notes:</b>				
<b>Version:</b>	<b>Phase:</b>	PLAN	<b>Tie On Depth:</b>	0.0
<b>Vertical Section:</b>	<b>Depth From (TVD) (usft)</b>	<b>+N/-S (usft)</b>	<b>+E/-W (usft)</b>	<b>Direction (°)</b>
	0.0	0.0	0.0	350.04

<b>Plan Sections</b>										
Measured Depth (usft)	Inclination (°)	Azimuth (°)	Vertical Depth (usft)	+N/-S (usft)	+E/-W (usft)	Dogleg Rate (°/100usft)	Build Rate (°/100usft)	Turn Rate (°/100usft)	TFO (°)	Target
0.0	0.00	0.00	0.0	0.0	0.0	0.00	0.00	0.00	0.00	
270.0	0.00	0.00	270.0	0.0	0.0	0.00	0.00	0.00	0.00	
940.3	20.11	351.91	926.6	115.3	-16.4	3.00	3.00	0.00	351.91	
8,635.1	20.11	351.91	8,152.4	2,734.5	-388.6	0.00	0.00	0.00	0.00	
9,305.4	0.00	0.00	8,809.0	2,849.7	-405.0	3.00	-3.00	0.00	180.00	13B-7 - OHCR
9,388.4	1.25	240.00	8,892.0	2,849.3	-405.8	1.50	1.50	-144.55	240.00	
13,948.5	1.25	240.00	13,451.0	2,799.7	-491.6	0.00	0.00	0.00	0.00	13B-7 - PBHL

<b>Database:</b>	EDM 5000.1 Single User Db	<b>Local Co-ordinate Reference:</b>	Well ELU A18 FED 13B-7 495 - Slot 13B-7
<b>Company:</b>	Caerus Oil & Gas	<b>TVD Reference:</b>	RKB @ 8059.0usft (30')
<b>Project:</b>	Rio Blanco County, CO	<b>MD Reference:</b>	RKB @ 8059.0usft (30')
<b>Site:</b>	ELU A18 495 Pad	<b>North Reference:</b>	True
<b>Well:</b>	ELU A18 FED 13B-7 495	<b>Survey Calculation Method:</b>	Minimum Curvature
<b>Wellbore:</b>	Wellbore #1		
<b>Design:</b>	Design #4		

Planned Survey									
Measured Depth (usft)	Inclination (°)	Azimuth (°)	Vertical Depth (usft)	+N/-S (usft)	+E/-W (usft)	Vertical Section (usft)	Dogleg Rate (°/100usft)	Build Rate (°/100usft)	Turn Rate (°/100usft)
0.0	0.00	0.00	0.0	0.0	0.0	0.0	0.00	0.00	0.00
100.0	0.00	0.00	100.0	0.0	0.0	0.0	0.00	0.00	0.00
200.0	0.00	0.00	200.0	0.0	0.0	0.0	0.00	0.00	0.00
<b>Build 3° / 100'</b>									
270.0	0.00	0.00	270.0	0.0	0.0	0.0	0.00	0.00	0.00
300.0	0.90	351.91	300.0	0.2	0.0	0.2	3.00	3.00	0.00
400.0	3.90	351.91	399.9	4.4	-0.6	4.4	3.00	3.00	0.00
500.0	6.90	351.91	499.4	13.7	-1.9	13.8	3.00	3.00	0.00
600.0	9.90	351.91	598.4	28.2	-4.0	28.4	3.00	3.00	0.00
700.0	12.90	351.91	696.4	47.7	-6.8	48.2	3.00	3.00	0.00
800.0	15.90	351.91	793.2	72.3	-10.3	73.0	3.00	3.00	0.00
900.0	18.90	351.91	888.6	101.9	-14.5	102.9	3.00	3.00	0.00
<b>EOB @ 20.11° Inc. / 351.91° Azm</b>									
940.3	20.11	351.91	926.6	115.3	-16.4	116.4	3.00	3.00	0.00
1,000.0	20.11	351.91	982.7	135.6	-19.3	136.9	0.00	0.00	0.00
1,100.0	20.11	351.91	1,076.6	169.6	-24.1	171.2	0.00	0.00	0.00
1,200.0	20.11	351.91	1,170.5	203.7	-28.9	205.6	0.00	0.00	0.00
1,300.0	20.11	351.91	1,264.4	237.7	-33.8	240.0	0.00	0.00	0.00
1,400.0	20.11	351.91	1,358.3	271.7	-38.6	274.3	0.00	0.00	0.00
1,500.0	20.11	351.91	1,452.2	305.8	-43.5	308.7	0.00	0.00	0.00
1,600.0	20.11	351.91	1,546.1	339.8	-48.3	343.1	0.00	0.00	0.00
1,700.0	20.11	351.91	1,640.0	373.9	-53.1	377.4	0.00	0.00	0.00
1,800.0	20.11	351.91	1,733.9	407.9	-58.0	411.8	0.00	0.00	0.00
1,900.0	20.11	351.91	1,827.8	441.9	-62.8	446.1	0.00	0.00	0.00
2,000.0	20.11	351.91	1,921.7	476.0	-67.6	480.5	0.00	0.00	0.00
2,100.0	20.11	351.91	2,015.6	510.0	-72.5	514.9	0.00	0.00	0.00
2,200.0	20.11	351.91	2,109.5	544.0	-77.3	549.2	0.00	0.00	0.00
2,300.0	20.11	351.91	2,203.4	578.1	-82.2	583.6	0.00	0.00	0.00
2,400.0	20.11	351.91	2,297.3	612.1	-87.0	617.9	0.00	0.00	0.00
2,500.0	20.11	351.91	2,391.2	646.2	-91.8	652.3	0.00	0.00	0.00
2,600.0	20.11	351.91	2,485.1	680.2	-96.7	686.7	0.00	0.00	0.00
2,700.0	20.11	351.91	2,579.1	714.2	-101.5	721.0	0.00	0.00	0.00
2,800.0	20.11	351.91	2,673.0	748.3	-106.3	755.4	0.00	0.00	0.00
2,900.0	20.11	351.91	2,766.9	782.3	-111.2	789.8	0.00	0.00	0.00
3,000.0	20.11	351.91	2,860.8	816.4	-116.0	824.1	0.00	0.00	0.00
3,100.0	20.11	351.91	2,954.7	850.4	-120.9	858.5	0.00	0.00	0.00
3,200.0	20.11	351.91	3,048.6	884.4	-125.7	892.8	0.00	0.00	0.00
3,300.0	20.11	351.91	3,142.5	918.5	-130.5	927.2	0.00	0.00	0.00
3,400.0	20.11	351.91	3,236.4	952.5	-135.4	961.6	0.00	0.00	0.00
3,500.0	20.11	351.91	3,330.3	986.6	-140.2	995.9	0.00	0.00	0.00
3,600.0	20.11	351.91	3,424.2	1,020.6	-145.1	1,030.3	0.00	0.00	0.00
<b>Wasatch</b>									
3,686.1	20.11	351.91	3,505.0	1,049.9	-149.2	1,059.9	0.00	0.00	0.00
3,700.0	20.11	351.91	3,518.1	1,054.6	-149.9	1,064.7	0.00	0.00	0.00
3,800.0	20.11	351.91	3,612.0	1,088.7	-154.7	1,099.0	0.00	0.00	0.00
3,900.0	20.11	351.91	3,705.9	1,122.7	-159.6	1,133.4	0.00	0.00	0.00
4,000.0	20.11	351.91	3,799.8	1,156.7	-164.4	1,167.7	0.00	0.00	0.00
4,100.0	20.11	351.91	3,893.7	1,190.8	-169.2	1,202.1	0.00	0.00	0.00
4,200.0	20.11	351.91	3,987.6	1,224.8	-174.1	1,236.5	0.00	0.00	0.00
4,300.0	20.11	351.91	4,081.5	1,258.9	-178.9	1,270.8	0.00	0.00	0.00
4,400.0	20.11	351.91	4,175.4	1,292.9	-183.8	1,305.2	0.00	0.00	0.00
4,500.0	20.11	351.91	4,269.3	1,326.9	-188.6	1,339.6	0.00	0.00	0.00
4,600.0	20.11	351.91	4,363.2	1,361.0	-193.4	1,373.9	0.00	0.00	0.00

<b>Database:</b>	EDM 5000.1 Single User Db	<b>Local Co-ordinate Reference:</b>	Well ELU A18 FED 13B-7 495 - Slot 13B-7
<b>Company:</b>	Caerus Oil & Gas	<b>TVD Reference:</b>	RKB @ 8059.0usft (30')
<b>Project:</b>	Rio Blanco County, CO	<b>MD Reference:</b>	RKB @ 8059.0usft (30')
<b>Site:</b>	ELU A18 495 Pad	<b>North Reference:</b>	True
<b>Well:</b>	ELU A18 FED 13B-7 495	<b>Survey Calculation Method:</b>	Minimum Curvature
<b>Wellbore:</b>	Wellbore #1		
<b>Design:</b>	Design #4		

Planned Survey									
Measured Depth (usft)	Inclination (°)	Azimuth (°)	Vertical Depth (usft)	+N/-S (usft)	+E/-W (usft)	Vertical Section (usft)	Dogleg Rate (°/100usft)	Build Rate (°/100usft)	Turn Rate (°/100usft)
4,700.0	20.11	351.91	4,457.1	1,395.0	-198.3	1,408.3	0.00	0.00	0.00
4,800.0	20.11	351.91	4,551.0	1,429.1	-203.1	1,442.6	0.00	0.00	0.00
4,900.0	20.11	351.91	4,644.9	1,463.1	-207.9	1,477.0	0.00	0.00	0.00
5,000.0	20.11	351.91	4,738.8	1,497.1	-212.8	1,511.4	0.00	0.00	0.00
5,100.0	20.11	351.91	4,832.8	1,531.2	-217.6	1,545.7	0.00	0.00	0.00
5,200.0	20.11	351.91	4,926.7	1,565.2	-222.5	1,580.1	0.00	0.00	0.00
5,300.0	20.11	351.91	5,020.6	1,599.2	-227.3	1,614.5	0.00	0.00	0.00
5,400.0	20.11	351.91	5,114.5	1,633.3	-232.1	1,648.8	0.00	0.00	0.00
5,500.0	20.11	351.91	5,208.4	1,667.3	-237.0	1,683.2	0.00	0.00	0.00
5,600.0	20.11	351.91	5,302.3	1,701.4	-241.8	1,717.5	0.00	0.00	0.00
5,700.0	20.11	351.91	5,396.2	1,735.4	-246.6	1,751.9	0.00	0.00	0.00
5,800.0	20.11	351.91	5,490.1	1,769.4	-251.5	1,786.3	0.00	0.00	0.00
5,900.0	20.11	351.91	5,584.0	1,803.5	-256.3	1,820.6	0.00	0.00	0.00
6,000.0	20.11	351.91	5,677.9	1,837.5	-261.2	1,855.0	0.00	0.00	0.00
6,100.0	20.11	351.91	5,771.8	1,871.6	-266.0	1,889.4	0.00	0.00	0.00
6,200.0	20.11	351.91	5,865.7	1,905.6	-270.8	1,923.7	0.00	0.00	0.00
6,300.0	20.11	351.91	5,959.6	1,939.6	-275.7	1,958.1	0.00	0.00	0.00
6,400.0	20.11	351.91	6,053.5	1,973.7	-280.5	1,992.4	0.00	0.00	0.00
6,500.0	20.11	351.91	6,147.4	2,007.7	-285.3	2,026.8	0.00	0.00	0.00
6,600.0	20.11	351.91	6,241.3	2,041.7	-290.2	2,061.2	0.00	0.00	0.00
6,700.0	20.11	351.91	6,335.2	2,075.8	-295.0	2,095.5	0.00	0.00	0.00
6,800.0	20.11	351.91	6,429.1	2,109.8	-299.9	2,129.9	0.00	0.00	0.00
6,900.0	20.11	351.91	6,523.0	2,143.9	-304.7	2,164.3	0.00	0.00	0.00
7,000.0	20.11	351.91	6,616.9	2,177.9	-309.5	2,198.6	0.00	0.00	0.00
<b>Wasatch G</b>									
7,005.4	20.11	351.91	6,622.0	2,179.7	-309.8	2,200.5	0.00	0.00	0.00
7,100.0	20.11	351.91	6,710.8	2,211.9	-314.4	2,233.0	0.00	0.00	0.00
7,200.0	20.11	351.91	6,804.7	2,246.0	-319.2	2,267.3	0.00	0.00	0.00
7,300.0	20.11	351.91	6,898.6	2,280.0	-324.0	2,301.7	0.00	0.00	0.00
<b>Fort Union</b>									
7,324.9	20.11	351.91	6,922.0	2,288.5	-325.3	2,310.2	0.00	0.00	0.00
7,400.0	20.11	351.91	6,992.5	2,314.1	-328.9	2,336.1	0.00	0.00	0.00
7,500.0	20.11	351.91	7,086.4	2,348.1	-333.7	2,370.4	0.00	0.00	0.00
7,600.0	20.11	351.91	7,180.4	2,382.1	-338.6	2,404.8	0.00	0.00	0.00
7,700.0	20.11	351.91	7,274.3	2,416.2	-343.4	2,439.2	0.00	0.00	0.00
7,800.0	20.11	351.91	7,368.2	2,450.2	-348.2	2,473.5	0.00	0.00	0.00
7,900.0	20.11	351.91	7,462.1	2,484.2	-353.1	2,507.9	0.00	0.00	0.00
8,000.0	20.11	351.91	7,556.0	2,518.3	-357.9	2,542.2	0.00	0.00	0.00
8,100.0	20.11	351.91	7,649.9	2,552.3	-362.7	2,576.6	0.00	0.00	0.00
8,200.0	20.11	351.91	7,743.8	2,586.4	-367.6	2,611.0	0.00	0.00	0.00
8,300.0	20.11	351.91	7,837.7	2,620.4	-372.4	2,645.3	0.00	0.00	0.00
8,400.0	20.11	351.91	7,931.6	2,654.4	-377.3	2,679.7	0.00	0.00	0.00
8,500.0	20.11	351.91	8,025.5	2,688.5	-382.1	2,714.0	0.00	0.00	0.00
8,600.0	20.11	351.91	8,119.4	2,722.5	-386.9	2,748.4	0.00	0.00	0.00
<b>Drop 3° /100'</b>									
8,635.1	20.11	351.91	8,152.4	2,734.5	-388.6	2,760.5	0.00	0.00	0.00
8,700.0	18.16	351.91	8,213.7	2,755.5	-391.6	2,781.7	3.00	-3.00	0.00
8,800.0	15.16	351.91	8,309.5	2,783.9	-395.7	2,810.4	3.00	-3.00	0.00
8,900.0	12.16	351.91	8,406.6	2,807.3	-399.0	2,834.0	3.00	-3.00	0.00
9,000.0	9.16	351.91	8,504.9	2,825.6	-401.6	2,852.5	3.00	-3.00	0.00
9,100.0	6.16	351.91	8,604.0	2,838.8	-403.5	2,865.8	3.00	-3.00	0.00
9,200.0	3.16	351.91	8,703.6	2,846.9	-404.6	2,873.9	3.00	-3.00	0.00
<b>EOD @ Vertical / Build 1.5° / 100' - Ohio Creek</b>									
9,305.4	0.00	0.00	8,809.0	2,849.7	-405.0	2,876.8	3.00	-3.00	0.00

<b>Database:</b>	EDM 5000.1 Single User Db	<b>Local Co-ordinate Reference:</b>	Well ELU A18 FED 13B-7 495 - Slot 13B-7
<b>Company:</b>	Caerus Oil & Gas	<b>TVD Reference:</b>	RKB @ 8059.0usft (30')
<b>Project:</b>	Rio Blanco County, CO	<b>MD Reference:</b>	RKB @ 8059.0usft (30')
<b>Site:</b>	ELU A18 495 Pad	<b>North Reference:</b>	True
<b>Well:</b>	ELU A18 FED 13B-7 495	<b>Survey Calculation Method:</b>	Minimum Curvature
<b>Wellbore:</b>	Wellbore #1		
<b>Design:</b>	Design #4		

Planned Survey									
Measured Depth (usft)	Inclination (°)	Azimuth (°)	Vertical Depth (usft)	+N/-S (usft)	+E/-W (usft)	Vertical Section (usft)	Dogleg Rate (°/100usft)	Build Rate (°/100usft)	Turn Rate (°/100usft)
<b>EOB @ 1.24° Inc. / 240.00° Azm</b>									
9,388.4	1.25	240.00	8,892.0	2,849.3	-405.8	2,876.5	1.50	1.50	0.00
9,400.0	1.25	240.00	8,903.6	2,849.2	-406.0	2,876.4	0.00	0.00	0.00
9,500.0	1.25	240.00	9,003.5	2,848.1	-407.9	2,875.7	0.00	0.00	0.00
9,600.0	1.25	240.00	9,103.5	2,847.0	-409.8	2,875.0	0.00	0.00	0.00
9,700.0	1.25	240.00	9,203.5	2,845.9	-411.7	2,874.2	0.00	0.00	0.00
9,800.0	1.25	240.00	9,303.5	2,844.8	-413.5	2,873.5	0.00	0.00	0.00
9,900.0	1.25	240.00	9,403.4	2,843.7	-415.4	2,872.7	0.00	0.00	0.00
<b>Williams Fork</b>									
9,904.6	1.25	240.00	9,408.0	2,843.7	-415.5	2,872.7	0.00	0.00	0.00
10,000.0	1.25	240.00	9,503.4	2,842.6	-417.3	2,872.0	0.00	0.00	0.00
10,100.0	1.25	240.00	9,603.4	2,841.6	-419.2	2,871.2	0.00	0.00	0.00
10,200.0	1.25	240.00	9,703.4	2,840.5	-421.1	2,870.5	0.00	0.00	0.00
10,300.0	1.25	240.00	9,803.4	2,839.4	-423.0	2,869.7	0.00	0.00	0.00
10,400.0	1.25	240.00	9,903.3	2,838.3	-424.8	2,869.0	0.00	0.00	0.00
10,500.0	1.25	240.00	10,003.3	2,837.2	-426.7	2,868.3	0.00	0.00	0.00
10,600.0	1.25	240.00	10,103.3	2,836.1	-428.6	2,867.5	0.00	0.00	0.00
10,700.0	1.25	240.00	10,203.3	2,835.0	-430.5	2,866.8	0.00	0.00	0.00
10,800.0	1.25	240.00	10,303.2	2,834.0	-432.4	2,866.0	0.00	0.00	0.00
10,900.0	1.25	240.00	10,403.2	2,832.9	-434.2	2,865.3	0.00	0.00	0.00
11,000.0	1.25	240.00	10,503.2	2,831.8	-436.1	2,864.5	0.00	0.00	0.00
11,100.0	1.25	240.00	10,603.2	2,830.7	-438.0	2,863.8	0.00	0.00	0.00
11,200.0	1.25	240.00	10,703.1	2,829.6	-439.9	2,863.0	0.00	0.00	0.00
11,300.0	1.25	240.00	10,803.1	2,828.5	-441.8	2,862.3	0.00	0.00	0.00
11,400.0	1.25	240.00	10,903.1	2,827.4	-443.7	2,861.6	0.00	0.00	0.00
11,500.0	1.25	240.00	11,003.1	2,826.3	-445.5	2,860.8	0.00	0.00	0.00
11,600.0	1.25	240.00	11,103.0	2,825.3	-447.4	2,860.1	0.00	0.00	0.00
11,700.0	1.25	240.00	11,203.0	2,824.2	-449.3	2,859.3	0.00	0.00	0.00
11,800.0	1.25	240.00	11,303.0	2,823.1	-451.2	2,858.6	0.00	0.00	0.00
11,900.0	1.25	240.00	11,403.0	2,822.0	-453.1	2,857.8	0.00	0.00	0.00
12,000.0	1.25	240.00	11,503.0	2,820.9	-455.0	2,857.1	0.00	0.00	0.00
12,100.0	1.25	240.00	11,602.9	2,819.8	-456.8	2,856.3	0.00	0.00	0.00
12,200.0	1.25	240.00	11,702.9	2,818.7	-458.7	2,855.6	0.00	0.00	0.00
12,300.0	1.25	240.00	11,802.9	2,817.7	-460.6	2,854.9	0.00	0.00	0.00
12,400.0	1.25	240.00	11,902.9	2,816.6	-462.5	2,854.1	0.00	0.00	0.00
12,500.0	1.25	240.00	12,002.8	2,815.5	-464.4	2,853.4	0.00	0.00	0.00
12,600.0	1.25	240.00	12,102.8	2,814.4	-466.2	2,852.6	0.00	0.00	0.00
12,700.0	1.25	240.00	12,202.8	2,813.3	-468.1	2,851.9	0.00	0.00	0.00
12,800.0	1.25	240.00	12,302.8	2,812.2	-470.0	2,851.1	0.00	0.00	0.00
12,900.0	1.25	240.00	12,402.7	2,811.1	-471.9	2,850.4	0.00	0.00	0.00
13,000.0	1.25	240.00	12,502.7	2,810.0	-473.8	2,849.6	0.00	0.00	0.00
<b>Cameo</b>									
13,014.3	1.25	240.00	12,517.0	2,809.9	-474.0	2,849.5	0.00	0.00	0.00
13,100.0	1.25	240.00	12,602.7	2,809.0	-475.7	2,848.9	0.00	0.00	0.00
13,200.0	1.25	240.00	12,702.7	2,807.9	-477.5	2,848.2	0.00	0.00	0.00
13,300.0	1.25	240.00	12,802.6	2,806.8	-479.4	2,847.4	0.00	0.00	0.00
13,400.0	1.25	240.00	12,902.6	2,805.7	-481.3	2,846.7	0.00	0.00	0.00
13,500.0	1.25	240.00	13,002.6	2,804.6	-483.2	2,845.9	0.00	0.00	0.00
13,600.0	1.25	240.00	13,102.6	2,803.5	-485.1	2,845.2	0.00	0.00	0.00
<b>Rollins</b>									
13,648.4	1.25	240.00	13,151.0	2,803.0	-486.0	2,844.8	0.00	0.00	0.00
13,700.0	1.25	240.00	13,202.6	2,802.4	-486.9	2,844.4	0.00	0.00	0.00
13,800.0	1.25	240.00	13,302.5	2,801.4	-488.8	2,843.7	0.00	0.00	0.00

<b>Database:</b>	EDM 5000.1 Single User Db	<b>Local Co-ordinate Reference:</b>	Well ELU A18 FED 13B-7 495 - Slot 13B-7
<b>Company:</b>	Caerus Oil & Gas	<b>TVD Reference:</b>	RKB @ 8059.0usft (30')
<b>Project:</b>	Rio Blanco County, CO	<b>MD Reference:</b>	RKB @ 8059.0usft (30')
<b>Site:</b>	ELU A18 495 Pad	<b>North Reference:</b>	True
<b>Well:</b>	ELU A18 FED 13B-7 495	<b>Survey Calculation Method:</b>	Minimum Curvature
<b>Wellbore:</b>	Wellbore #1		
<b>Design:</b>	Design #4		

Planned Survey									
Measured Depth (usft)	Inclination (°)	Azimuth (°)	Vertical Depth (usft)	+N/-S (usft)	+E/-W (usft)	Vertical Section (usft)	Dogleg Rate (°/100usft)	Build Rate (°/100usft)	Turn Rate (°/100usft)
13,900.0	1.25	240.00	13,402.5	2,800.3	-490.7	2,842.9	0.00	0.00	0.00
<b>TD @ 13948.5' MD / 13451.0' TVD</b>									
13,948.5	1.25	240.00	13,451.0	2,799.7	-491.6	2,842.6	0.00	0.00	0.00

Design Targets									
Target Name	Dip Angle (°)	Dip Dir. (°)	TVD (usft)	+N/-S (usft)	+E/-W (usft)	Northing (usft)	Easting (usft)	Latitude	Longitude
13B-7 - OHCR - hit/miss target - plan hits target center - Shape	0.00	0.00	8,809.0	2,849.7	-405.0	14,436,123.57	2,454,348.75	39.716958	-108.105848
13B-7 - PBHL - plan hits target center - Ellipse (radii L100.0 W50.0 on 240.00 azi)	0.00	0.00	13,451.0	2,799.7	-491.6	14,436,070.80	2,454,263.80	39.716821	-108.106156

Formations						
Measured Depth (usft)	Vertical Depth (usft)	Name	Lithology	Dip (°)	Dip Direction (°)	
3,686.1	3,505.0	Wasatch				
7,005.4	6,622.0	Wasatch G				
7,324.9	6,922.0	Fort Union				
9,305.4	8,809.0	Ohio Creek				
9,904.6	9,408.0	Williams Fork				
13,014.3	12,517.0	Cameo				
13,648.4	13,151.0	Rollins				

Plan Annotations				
Measured Depth (usft)	Vertical Depth (usft)	+N/-S (usft)	+E/-W (usft)	Comment
270.0	270.0	0.0	0.0	Build 3° / 100'
940.3	926.6	115.3	-16.4	EOB @ 20.11° Inc. / 351.91° Azm
8,635.1	8,152.4	2,734.5	-388.6	Drop 3° / 100'
9,305.4	8,809.0	2,849.7	-405.0	EOD @ Vertical / Build 1.5° / 100'
9,388.4	8,892.0	2,849.3	-405.8	EOB @ 1.24° Inc. / 240.00° Azm
13,948.5	13,451.0	2,799.7	-491.6	TD @ 13948.5' MD / 13451.0' TVD