

# **FREMONT ENVIRONMENTAL INC.**

February 09, 2023

Mr. Daniel Peterson  
Noble Energy Inc.  
2115 117<sup>th</sup> Avenue  
Greeley, CO 80634

Subject:       **Flowline Closure Data Submittal**  
PTF C 32-8  
API # 05-123-14879  
SENE Sec. 32, T4N, R64W  
Weld County, Colorado  
Fremont Project No. C022-089  
Facility # 247082, Remediation #23204

Dear Mr. Peterson:

As you requested, Fremont Environmental Inc. (Fremont) personnel conducted Flowline Closure activities for the Noble Energy Inc. (Noble) PTF C 32-8. Impacted soil was not encountered during abandonment activities. Details of the PTF C 32-8 flowline closure activities are documented in the attached Closure Report. Groundwater was not encountered during flowline abandonment activities.

Please contact me at (303) 956-8714 if you require any additional information. Fremont appreciates the opportunity to provide this service.

Sincerely,

**FREMONT ENVIRONMENTAL INC.**

A handwritten signature in blue ink, appearing to read "Paul V. Henchan".

Paul V. Henchan, P.E.  
Senior Consultant

Attachments:

Facility Closure Checklist  
Tables  
Figures  
Photos  
Laboratory Reports

**1759 REDWING LANE, BROOMFIELD, CO 80020  
(303) 956-8714 (DIRECT)**

# Flowline Closure Checklist

## COGCC Rule 911.a.(4) Environmental Site Closure Assessment Field Form

Additional Attachments:		Tank Battery Closure		Wellhead Closure		Pit Closure		Partially Buried Vault Closure
Site Name & COGCC Facility Number: PTF-64N64W 32SENE Facility ID: 327571		Date: 07/19/2022						Remediation Project #: 23204
Associated Wells: PTF C 32-1 & PTF C 32-8 API: 05-123-14878 Facility ID: 247081 API: 05-123-14879 Facility ID: 247082		Age of Site: 1991						Number of Photos Attached: 5 Photos
Starting point: (GPS coordinates and descriptions) 40.270221, -104.567746								
End point: (GPS coordinates and descriptions) 40.271330, -104.565757								
USCS Soil Type: SW					Estimated Depth to Groundwater: 8-10ft			
Hydrocarbon Impacted Soils / Spills: (Note estimated size and if impact appears to be surficial or extends to an unknown depth)								
None observed								
Salt Crusted Soils or Impacted Vegetation: (Note estimated size and if impact appears to be surficial or extends to an unknown depth)								
None observed								
Flowlines								
Flowline type	2" Steel							
Depth	3-5ft							
Age	1991							
Length	950ft							
Construction Material	Non ACM / 2" Steel							
Were flowlines pulled?	Yes							
Visual Integrity of lines	No Damage							
Visual impacts if trenched	No Impacts							
PID Readings if trenched	High @ 1.0ppm							
Sample taken? Location/Sample ID#	Fieldscreened Only							
Photo Number(s)	Photo 1A-1E							
Other observations regarding on location flowlines:								
Summary								
Was impacted soil identified? No Yes - less than 10 cubic yards Yes - more than 10 cubic yards								
Total number of samples field screened: 6 Samples					Total number of samples collected: 6 Samples			
Highest PID Reading: High @1.0ppm (8FL06@4.0', 8FL03@4.5' and 8FL04@5.0')					Total number of samples submitted to lab for analysis: 0 Sample			
If more than 10 cubic yards of impacted soil were observed:								
Vertical extent: N/A					Estimated spill volume: N/A			
Lateral extent: N/A					Volume of soil removed: N/A			
Is additional investigation required? N/A								
Was groundwater encountered during the investigation? No Yes - not impacted or in contact with impacted soils Yes - groundwater impacted and/or in contact with impacted soils								
Measured depth to groundwater: N/A					Was remedial groundwater removal conducted? Yes No			
Date Groundwater was encountered: N/A					Commencement date of removal: N/A			
Sheen on groundwater? Yes No					Volume of groundwater removed prior to sampling: N/A			
Free product observed? Yes No					Volume of groundwater removed post sampling: N/A			
Total number of samples collected: N/A					Total Volume of groundwater removed: N/A			
Total number of samples submitted to lab for analysis: N/A								

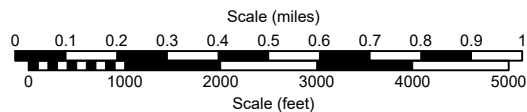
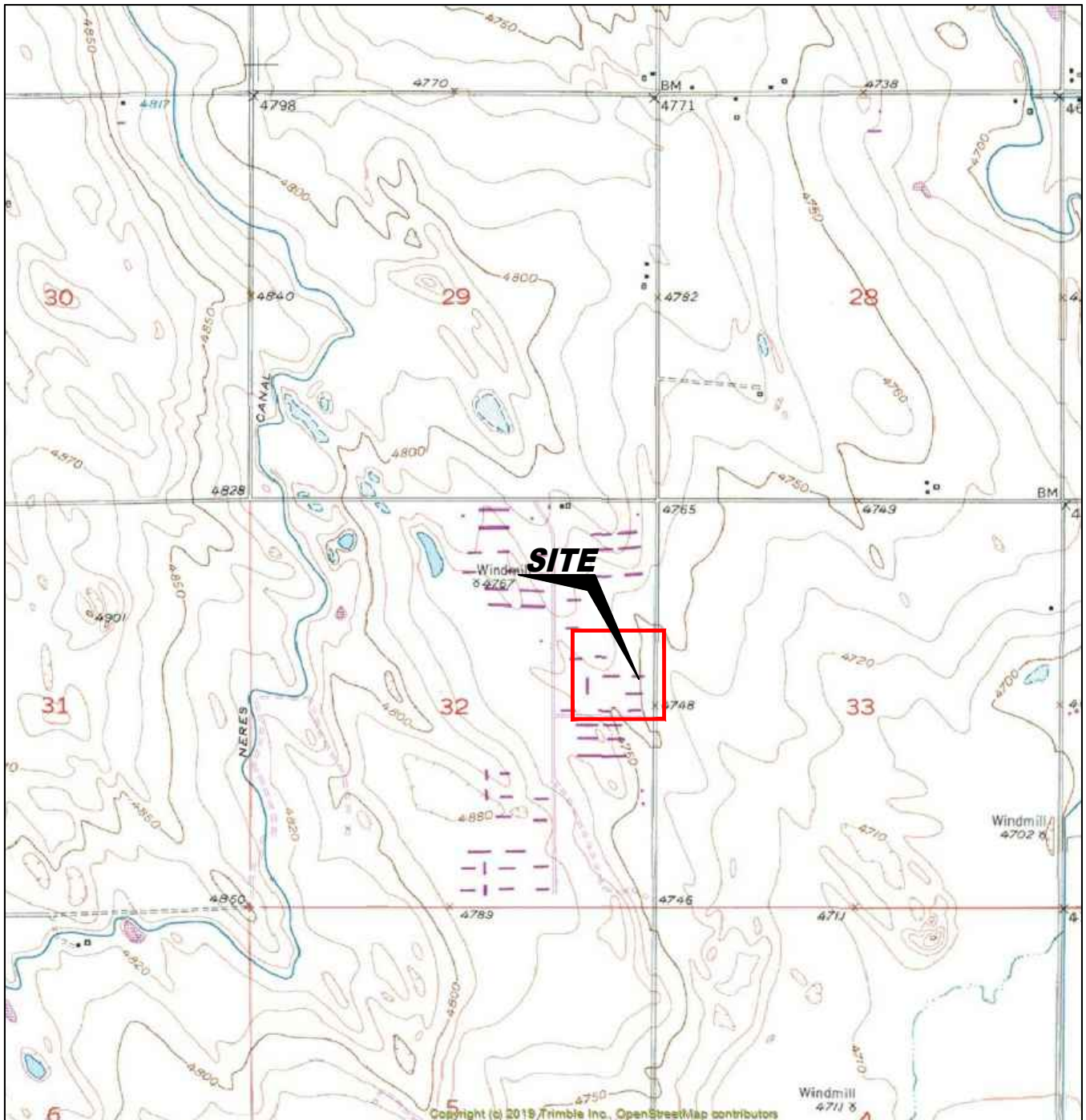
**TABLE 1**  
**SUMMARY OF POTHOLE FIELD OBSERVATIONS**  
**NOBLE ENERGY INC.**  
**PTF C 32-8, WELD COUNTY, COLORADO**  
**FREMONT PROJECT C022-089**

Location	Latitude	Longitude	PID Reading	Field Observations
8FL01@3.0'	40.270221	-104.567746	0.3ppm	No Impacts Noted
8FL02@5.0'	40.270325	-104.567292	0.9ppm	No Impacts Noted
8FL03@4.5'	40.270485	-104.566832	1.0ppm	No Impacts Noted
8FL04@5.0'	40.270951	-104.566462	1.0ppm	No Impacts Noted
8FL05@5.0'	40.271502	-104.566012	0.1ppm	No Impacts Noted
8FL06@4.0'	40.271330	-104.565757	1.0ppm	No Impacts Noted

**TABLE 2**  
**SUMMARY OF FLOW LINE CONDITION**  
**NOBLE ENERGY INC.**  
**PTF C 32-8, WELD COUNTY, COLORADO**  
**FREMONT PROJECT C022-089**

START	STOP	FOOTAGE	PIPE TYPE AND CONDITION
8FL01@3.0'	8FL02@5.0'	115	2" Sch 80 welded steel pipe, Wrapped in Black Non ACM Tape, Good Condition
8FL02@5.0'	8FL03@4.5'	135	2" Sch 80 welded steel pipe, Wrapped in Black Non ACM Tape, Good Condition
8FL03@4.5'	8FL04@5.0'	180	2" Sch 80 welded steel pipe, Wrapped in Black Non ACM Tape, Good Condition
8FL04@5.0'	8FL05@5.0'	220	2" Sch 80 welded steel pipe, Wrapped in Black Non ACM Tape, Good Condition
8FL05@5.0'	8FL06@4.0'	300	2" Sch 80 welded steel pipe, Wrapped in Black Non ACM Tape, Good Condition

950      Total linear feet of flow line



USGS 7.5 MINUTE SERIES (TOPOGRAPHIC)

Figure 1  
SITE LOCATION MAP

**Noble Energy, Inc. ~ PTF C 32-8**  
SENE Sec. 32, T4N, R64W, 6th PM  
Weld County, Colorado  
40.270210°, -104.567750°

Project # <b>C022-089</b>	API # <b>05-123-14879</b>	Facility # <b>247082</b>
Date <b>2/7/23</b>	Remediation # <b>23204</b>	Filename <b>22089T4</b>







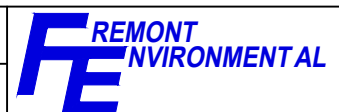
#### LEGEND

▲ PID READING LOCATION	○ ABOVE GROUND STORAGE TANK	FORMER FACILITY	BUILDING	CONTAINMENT BERM	FLOW LINE	FENCE LINE
8FL01 (2.5') PID 0.3 ppm						
PID READING LOCATION IDENTIFICATION PHOTO IONIZATION DETECTION (ppm)						

Figure 2  
SITE MAP

**Noble Energy, Inc. ~ PTF C 32-8**  
 SENE Sec. 32, T4N, R64W, 6th PM  
 Weld County, Colorado  
 40.270210°, -104.567750°

Project No. <b>C022-089</b>	API # <b>05-123-14879</b>	Facility # <b>247082</b>
Date <b>2/7/23</b>	Reviewed By <b>23204</b>	Filename <b>22089Q32-8</b>







#1A – PTF C 32-8 Flowline Removal – 8FL01@3.0' – Wellhead Tie-in - No Impacts Noted - PID 0.3ppm



#1B – PTF C 32-8 Flowline Removal – 8FL03@4.5' – No Impacts Noted - PID 1.0ppm





#1C – PTF C 32-8 Flowline Removal – 8FL04@5.0' – No Impacts Noted - PID 1.0ppm



#1D – PTF C 32-8 Flowline Removal – 8FL05@5.0' – No Impacts Noted - PID 0.1ppm





#1E – PTF C 32-8 Flowline Removal – 8FL06@4.0' – Separator Tie-in – No Impacts Noted -  
PID 1.0ppm