



00520204

TRILOBITE TESTING, L.L.C.

P.O. Box 362 • Hays, Kansas 67601

Drill-Stem Test Data

Well Name CHEETO #14-16 Test No. 1 Date 11/17/93
 Company UNION PACIFIC RESOURCES CORPORATION Zone MORROW
 Address P O BOX 7 MS#3605 FT WORTH TX 76102 Elevation 4473
 Co. Rep./Geo. JACK PARROTT Cont. CHEYENNE RIG #7 Est. Ft. of Pay 10
 Location: Sec. 16 Twp. 14S Rge. 49W Co. CHEYENNE State CO

Interval Tested 5330-5522 Drill Pipe Size 4.5" XH
 Anchor Length 192 Wt. Pipe I.D. - 2.7 Ft. Run 620
 Top Packer Depth 5323 Drill Collar - 2.25 Ft. Run 9
 Bottom Packer Depth 5330 Mud Wt. 62 lb/Gal. 8
 Total Depth 5522 Viscosity 62 Filtrate 8

Tool Open @ 3:52 AM Initial Blow STRONG BLOW OFF BOTTOM IN 30 SECONDS

Final Blow GOOD BLOW OFF BOTTOM IN 2 MINUTES

Recovery - Total Feet 2024 Flush Tool? NO

Rec. 340 Feet of SLTLY GAS CUT MUD-1% GAS/ 99% MUD
 Rec. 1684 Feet of SLTLY GAS CUT WATER-1% GAS/ 99% WTR
 Rec. _____ Feet of _____
 Rec. _____ Feet of _____
 Rec. _____ Feet of _____

BHT _____ °F Gravity _____ °API @ _____ °F Corrected Gravity _____ °API
 RW 0.06 @ 70 °F Chlorides 140000 ppm Recovery Chlorides 500 ppm System

(A) Initial Hydrostatic Mud 2746.3 PSI AK1 Recorder No. 13308 Range 4700

(B) First Initial Flow Pressure 744.1 PSI @ (depth) 5333 w / Clock No. 17652

(C) First Final Flow Pressure 1045.2 PSI AK1 Recorder No. 11057 Range 4500

(D) Initial Shut-in Pressure 1087.4 PSI @ (depth) 5486 w / Clock No. 27566

(E) Second Initial Flow Pressure 1066.3 PSI AK1 Recorder No. _____ Range _____

(F) Second Final Flow Pressure 1085.2 PSI @ (depth) _____ w / Clock No. _____

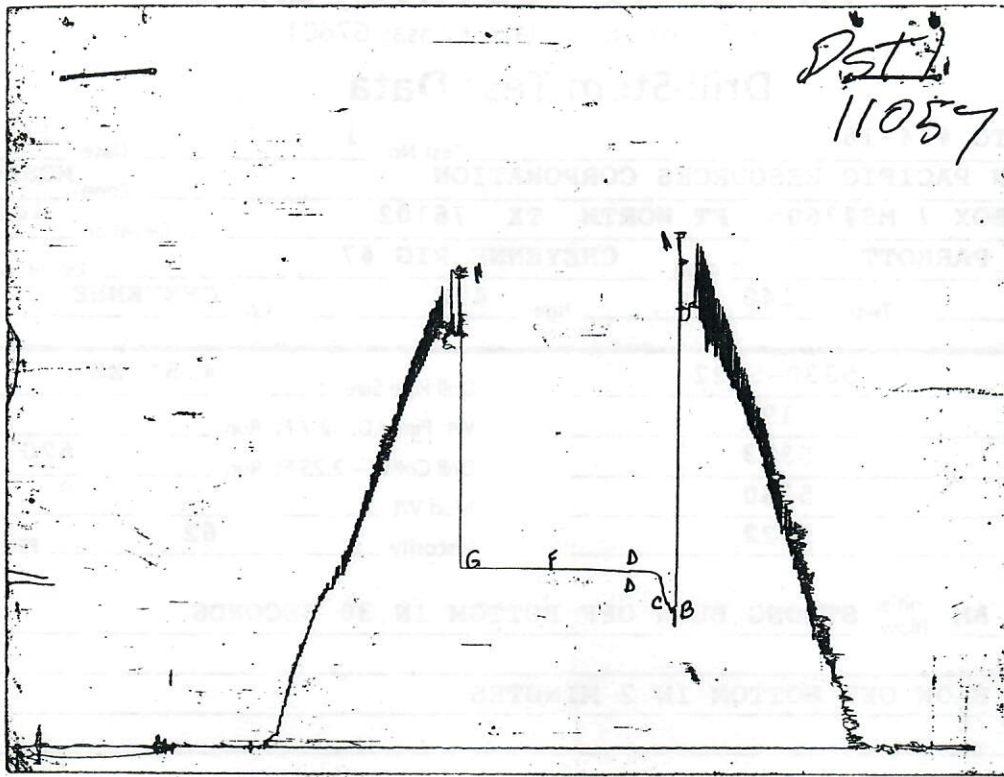
(G) Final Shut-in Pressure 1116.3 PSI Initial Opening 15 Final Flow 60

(H) Final Hydrostatic Mud 2724.1 PSI Initial Shut-in 30 Final Shut-in 60

Jur Representative MARK HERSKOWITZ

RECEIVED
 NOV 26 1993
 COLO. OIL & GAS CONS. COMM.

CHART PAGE



This is an actual photograph of recorder chart

FIELD
READING

OFFICE
READING

(A) INITIAL HYDROSTATIC MUD	2744	2746.3
(B) FIRST INITIAL FLOW PRESSURE	736	744.1
(C) FIRST FINAL FLOW PRESSURE	1041	1045.2
(D) INITIAL CLOSED-IN PRESSURE	1088	1087.4
(E) SECOND INITIAL FLOW PRESSURE	1064	1066.3
(F) SECOND FINAL FLOW PRESSURE	1088	1085.2
(G) FINAL CLOSED-IN PRESSURE	1111	1116.3
(H) FINAL HYDROSTATIC MUD	2720	2724.1

FLUID SAMPLER DATA

Ticket No.: 6790 Date: 11/17/93
 Company: UNION PACIFIC RESOURCES CORPORATION
 Lease: CHEETO #14-16 Test No.: 1
 County: CHEYENNE Sec.: 16 Twp.: 14S Rng.: 49W

SAMPLER RECOVERY

Gas .01 CU FT
 Oil
 Mud
 Water 4000
 Other
 Pressure 122
 TOTAL 4000

PIT MUD ANALYSIS

Chlorides 500
 Resistivity ohms@ F
 Viscosity 62
 Mud Wt. 9
 Filtrate 8
 Other

SAMPLER ANALYSIS

Resistivity 0.06 ohms@ 70 F
 Chlorides 140000 ppm.
 Gravity corrected @60F

PIPE RECOVERY

TOP

Resistivity ohms@ F
 Chlorides ppm

MIDDLE

Resistivity 0.08 ohms@ 58 F
 Chlorides 125000 ppm

BOTTOM

Resistivity 0.06 ohms@ 70 F
 Chlorides 140000 ppm

GAS VOLUME REPORT

UNION PACIFIC RESOURCES CORPORATION

CHEETO #14-16

DST # 1

MIN	INCHES OF WTR	ORIFICE	MCF/D
0	OFF BOTTOM/30 SEC		
3	6	0.375	8.74
5	10	0.375	11.3
10	6	0.375	8.74
15	4	0.375	7.14

MIN	INCHES OF WTR	ORIFICE	MCF/D
2	OFF BOTTOM		
5	0	0.125	0
BACK TO BOTTOM OF BUCKET			
10	4	INTO WATER	
15	5	INTO WATER	
20	5.5	INTO WATER	
25	6	INTO WATER	
30	6.5	INTO WATER	
35	6.75	INTO WATER	
40	7	INTO WATER	
45	7.125	INTO WATER	
50	1.25	INTO WATER	
55	7.375	INTO WATER	
60	7.5	INTO WATER	

Remarks: