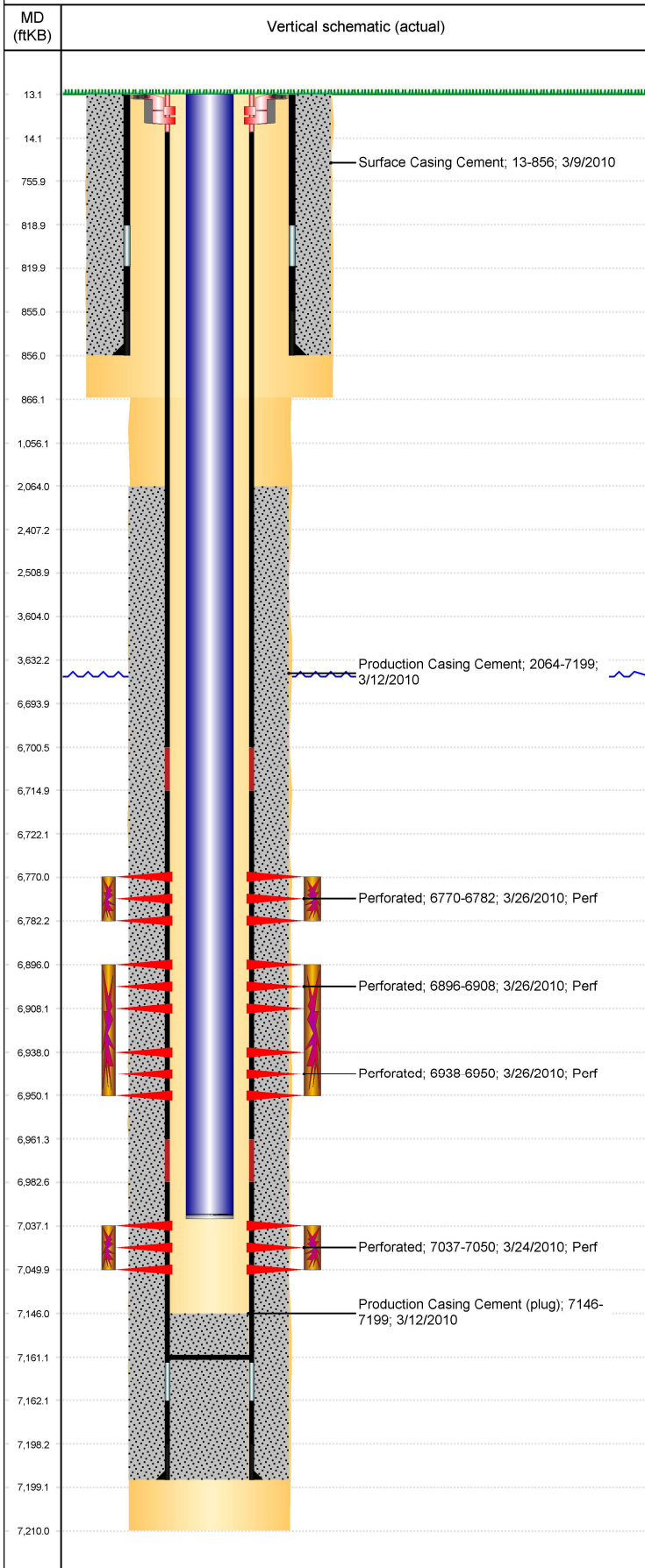




P&A Wellbore For State

Well Name: ROUSE USX A05-03

Land, Original Hole, 10/17/2023 2:09:26 PM



Well Header									
Surface UWI 0512330349			Business Unit Rockies			Gov Auth Dist		Prod Tree Loc Land	
Orig. KB to Gnd (ft) 13.00		Original Spud Date 3/8/2010		Abandon Date		Well Sub-Status PR			High... N
Comment									
Surface Location (Congressional)									
Qtr 3 NE	Qtr 4 NW	Section 5	Twnshp 6	Twnsh... N	Range 64	Rng E/... W	Latitude (°) 40.52005908 3	Longitude (°) -104.575970126	
Wellbore Sections									
Section Des			Hole Size (in)			Act Top (ftKB)		Act Btm (ftKB)	
SURFACE			12 1/4			13.0		866.0	
PRODUCTION			7 7/8			866.0		7,210.0	
Casing Strings									
Csg Des			Run Date		OD (in)	Wt/Len (lb/ft)	Grade	Top Depth (MD) (ftKB)	Set Depth (MD) (ftKB)
Surface			3/9/2010		8 5/8	32.00	J-55	13	856
Production Casing			3/12/2010		4 1/2	11.60	N-80	13	7199
Cement									
Des					Start Date		Top (ftKB)		Btm (ftKB)
Surface Casing Cement					3/9/2010		13.0		856.0
Production Casing Cement					3/12/2010		2,064.0		7,199.0
Zone Statuses									
Zone Name		Status Date	Status	Fluid Type	Job			Prod Method	
CODELL		4/9/2010	PR		DRILLING/COMPLETION - ORIGINAL, 3/8/2010...				
NIOBRARA		4/9/2010	PR		DRILLING/COMPLETION - ORIGINAL, 3/8/2010...				
Perforation Data									
Linked Zone			Explosive Type	Entered Shot Total	Top (ftKB)		Btm (ftKB)		Date
NIOBRARA, Original Hole			C	24	6,770.0		6,782.0		3/26/2010
NIOBRARA, Original Hole			B	24	6,896.0		6,908.0		3/26/2010
NIOBRARA, Original Hole			C	0	6,938.0		6,950.0		3/26/2010
CODELL, Original Hole				52	7,037.0		7,050.0		3/24/2010
Stimulation Intervals									
Zone				Start Date		Top (ftKB)		Btm (ftKB)	
NIOBRARA, Original Hole				3/26/2010		6,770.0		6,782.0	
NIOBRARA, Original Hole				3/26/2010		6,896.0		6,950.0	
CODELL, Original Hole				3/26/2010		7,037.0		7,050.0	
Other In Hole									
Run Date		Des			Make		OD (in)	Top (ftKB)	Btm (ftKB)
Logs									
Date		Type					Depth Top (MD) (ftKB)		Btm (ftKB)
3/11/2010		Caliper/Comp. Density/Neutron/GR/SP/ML					2,800		7,201.0
3/11/2010		DIL/GR/SP/Caliper					856		7,201.0
3/18/2010		CBL/CCL/GR					1,900		7,146.0
Plug Back Total Depths									
Date		Type		Com				PBTD (ftKB)	
3/12/2010		FLOAT COLLAR		FLOAT COLLAR				7,161	
3/30/2010		PLUG REMNANTS		111' OF RAT HOLE. CONE BIT & BOTTOM HALF OF PUMP OF...				7,161	