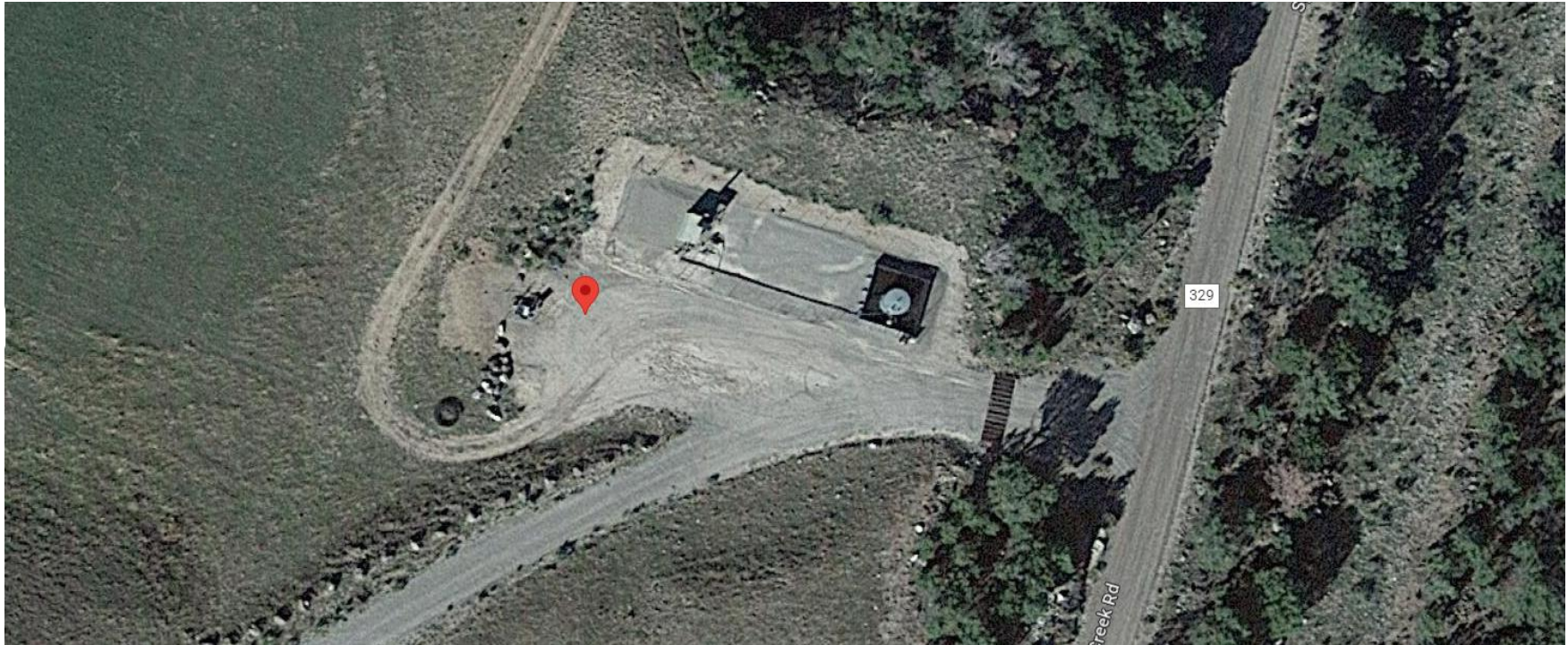


**Storm Water Management and Erosion control**  
**Location Name: TEP Rocky Mountain LLC BERNKLAU RWF 14-4 Pad**  
**Location # 324111**



**Location Overview: Location is within High  
Priority/Density/Black Bear Habitat areas & in close proximity  
to NSO Habitat area. Location is approximately 397 yards  
from Spruce Creek.**

**Section/Township/Range: 4 7S94W**





**Storm water Management and Erosion control**  
**Location Name: TEP Rocky Mountain LLC BERNKLAU RWF 14-4 Pad**  
**Location # 324111**



**North West corner of location.**



**North East corner of location.**



**South West corner of location.**



**South East corner of location.**