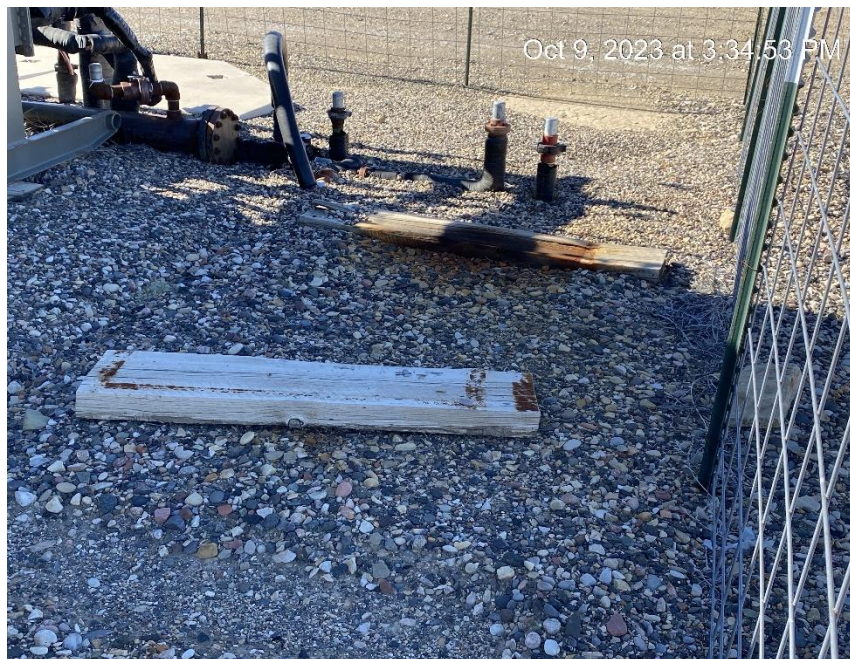
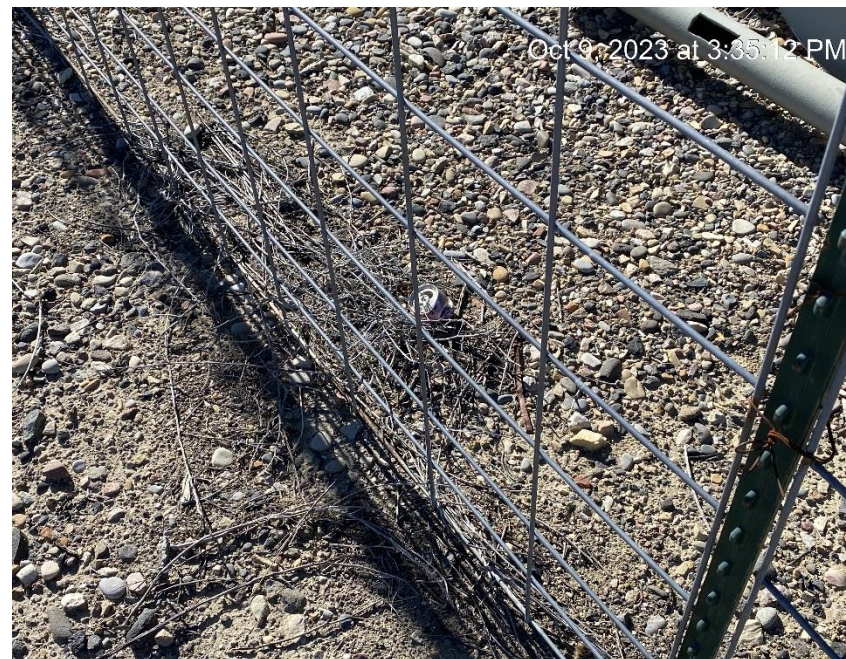


TEP Rocky Mountain LLC  
Federal RGU 43-23-198  
Location ID: 433287



Debris



Debris



TEP Rocky Mountain LLC  
Federal RGU 43-23-198  
Location ID: 433287



Debris



Debris



**TEP Rocky Mountain LLC  
Federal RGU 43-23-198  
Location ID: 433287**



**10 wells on location, 17 active separators, 19 wells on sign**



**No visible display of gas meter calibration at each meter**

TEP Rocky Mountain LLC  
Federal RGU 43-23-198  
Location ID: 433287



**No visible display of gas meter calibration at each meter**



**No visible display of gas meter calibration at each meter**



TEP Rocky Mountain LLC  
Federal RGU 43-23-198  
Location ID: 433287



**No visible display of gas meter calibration at each meter**

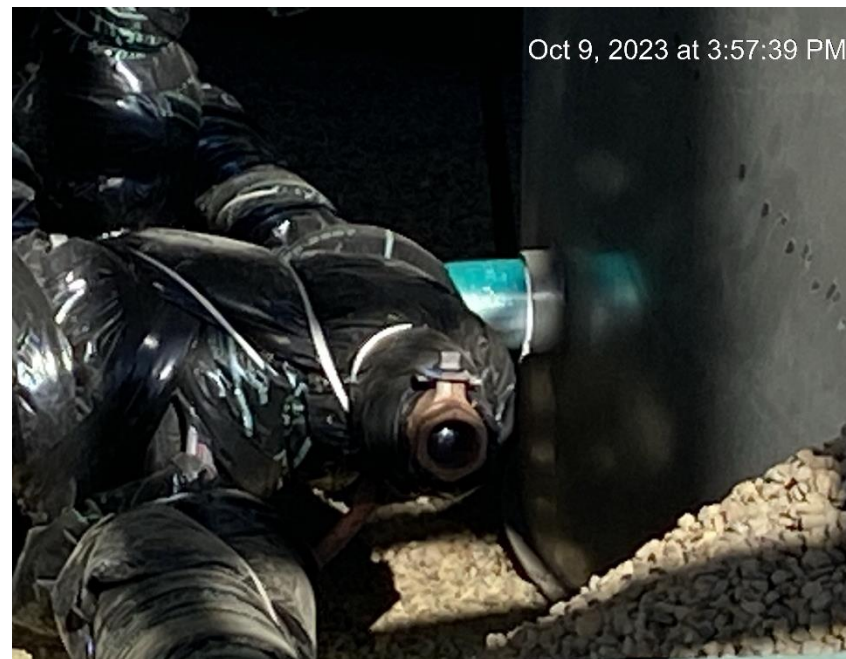


**Open end tank valve**

TEP Rocky Mountain LLC  
Federal RGU 43-23-198  
Location ID: 433287



Debris



Open end tank valve



**TEP Rocky Mountain LLC**  
**Federal RGU 43-23-198**  
**Location ID: 433287**



**Debris**



**Staining**



**TEP Rocky Mountain LLC**  
**Federal RGU 43-23-198**  
**Location ID: 433287**



**Staining**



**Debris**



**TEP Rocky Mountain LLC**  
**Federal RGU 43-23-198**  
**Location ID: 433287**



**Tank battery sign missing required information**



**Staining**



TEP Rocky Mountain LLC  
Federal RGU 43-23-198  
Location ID: 433287



**Staining**



**Debris**



**TEP Rocky Mountain LLC  
Federal RGU 43-23-198  
Location ID: 433287**



**Staining**



**As signs are replaced additional information will be required**



**TEP Rocky Mountain LLC  
Federal RGU 43-23-198  
Location ID: 433287**



**Location from Southwest corner**



**Location from Northwest corner**



**TEP Rocky Mountain LLC  
Federal RGU 43-23-198  
Location ID: 433287**



**Location from Northeast corner**



**Location from Southeast corner**