

**TEP Rocky Mountain LLC  
Federal RGU 23-23-198  
Location ID: 419254**



**Wellheads**

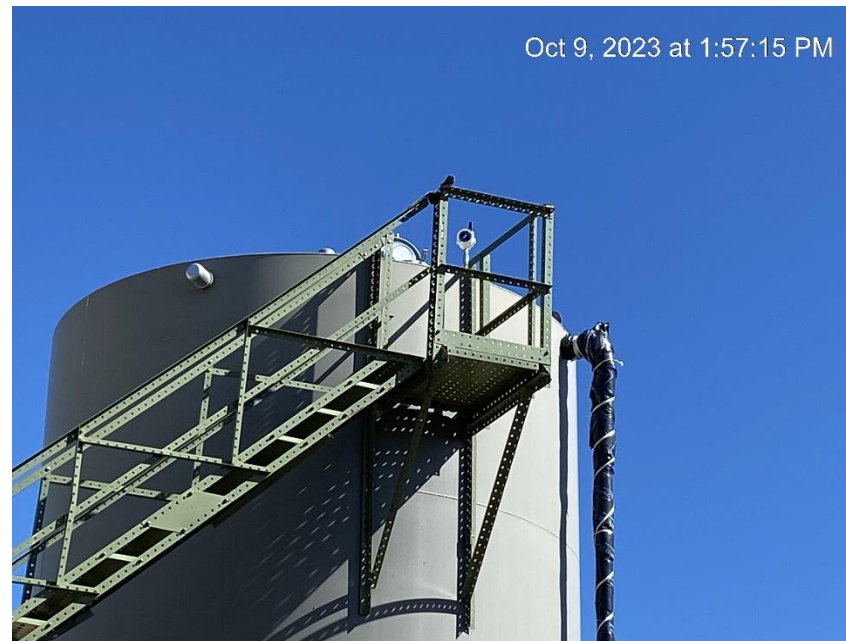


**Tank battery**

TEP Rocky Mountain LLC  
Federal RGU 23-23-198  
Location ID: 419254



**Tank with gauge hatch open**



**Open gauge hatch**



TEP Rocky Mountain LLC  
Federal RGU 23-23-198  
Location ID: 419254



**Debris outside tank battery**



**Debris outside tank battery**



**TEP Rocky Mountain LLC  
Federal RGU 23-23-198  
Location ID: 419254**



**Debris inside tank battery**



**Debris inside tank battery**



**TEP Rocky Mountain LLC  
Federal RGU 23-23-198  
Location ID: 419254**



**Debris inside tank battery**



**Debris inside tank battery**



TEP Rocky Mountain LLC  
Federal RGU 23-23-198  
Location ID: 419254



Debris outside tank battery



Separators



**TEP Rocky Mountain LLC  
Federal RGU 23-23-198  
Location ID: 419254**



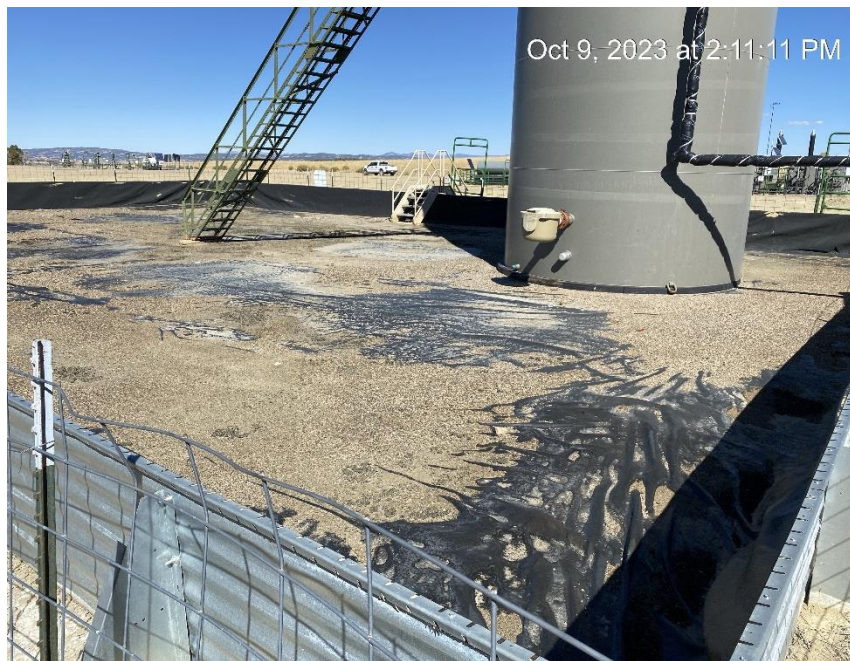
**Location view from Northeast corner**



**Location view from Northwest corner**



**TEP Rocky Mountain LLC  
Federal RGU 23-23-198  
Location ID: 419254**



**Location view from Southwest corner**



**Location view from Southeast corner**