

# Construction and Stormwater Inspection

September 28, 2023

Operator: KERR MCGEE OIL & GAS ONSHORE LP #47120

Location ID: 482983

Inspection Document #:697504877

Weld County, CO

NWNE Section 4 T3N R67W

Chris Binschus  
Reclamation Specialist, ECMC

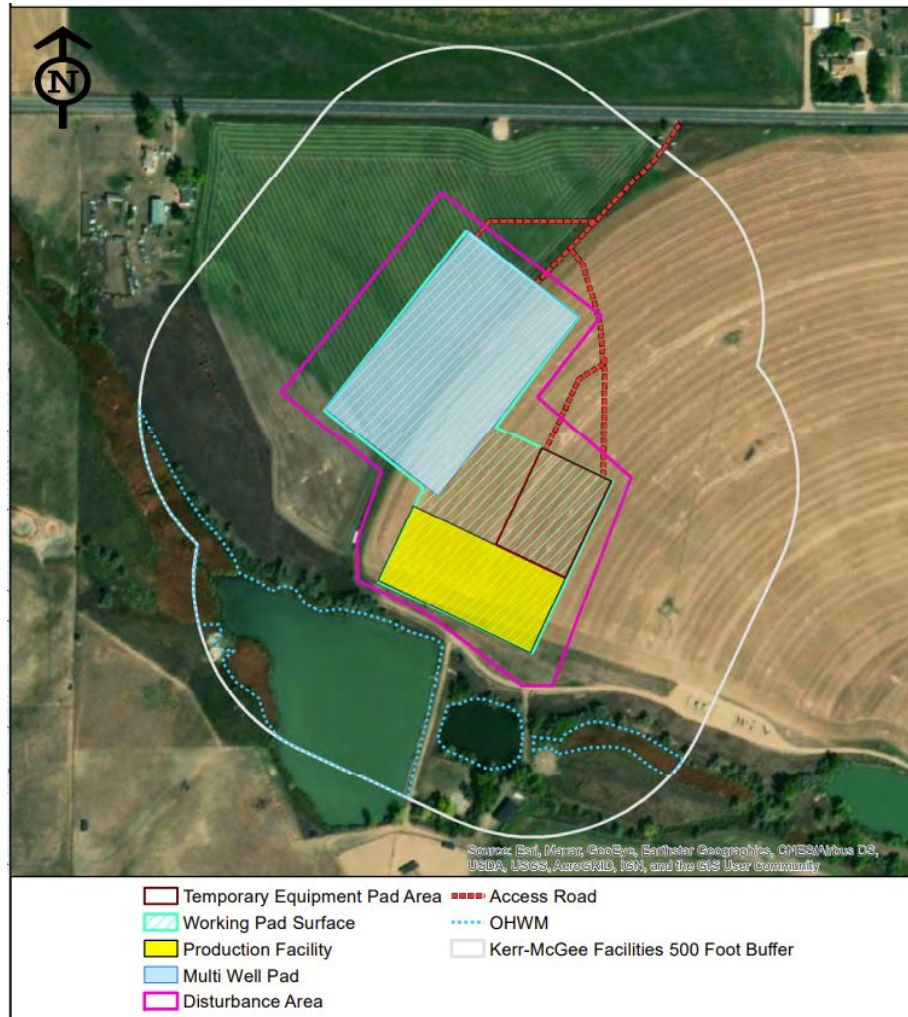


**COLORADO**

**Energy & Carbon Management  
Commission**

Department of Natural Resources

Inspection Photos  
Location Name: SWARTZ/2-4HZ  
Location ID: 482983



**Photo 1.** Figure 2 from the Wildlife Mitigation Plan is illustrated. At the time of this inspection, Operator has constructed the working pad surface and associated access road.

Inspection Photos  
Location Name: SWARTZ/2-4HZ  
Location ID: 482983



**Photo 2.** Photo taken from the entrance of location off CR38. Photo illustrates the Operator sign and mailbox with the required permits.



**Photo 3.** Photo taken from the entrance of location, facing South. Photo illustrates the Operator has installed a VTC device BMP which is in proper functioning at the of this inspection.



Inspection Photos  
Location Name: SWARTZ/2-4HZ  
Location ID: 482983



**Photo 4.** Photo taken from the entrance of location off CR38, facing West. Photo illustrates the current CR38 condition.



**Photo 5.** Photo taken from the entrance of location off CR38, facing East. See comments under Photo 4.



Inspection Photos  
Location Name: SWARTZ/2-4HZ  
Location ID: 482983



**Photo 6.** Photo taken from the northern perimeter of location and access road. Photo illustrates the culvert does not have any inlet or outlet protection.

Note- On 10/3/2023, Operator communicated that inlet and outlet protection was installed on 9/29/2023.



**Photo 7.** Photo taken from the northwestern perimeter of location, facing South. Photo illustrates the topsoil stockpile and stormwater BMPs areas have been seeded. Establishment of desirable vegetation was observed.



Inspection Photos  
Location Name: SWARTZ/2-4HZ  
Location ID: 482983



**Photo 8.** Photo taken from the southern perimeter of location, facing East. Photo illustrates a Weld County stormwater BMP.



**Photo 9.** Photo taken from the southern perimeter of location, facing East. Photo illustrates the Production Facility has not yet been constructed.



Inspection Photos  
Location Name: SWARTZ/2-4HZ  
Location ID: 482983



**Photo 10.** Photo taken from the eastern perimeter of location, facing North. Photo illustrates the eastern spillway per Weld County.



**Photo 11.** Photo taken from the eastern perimeter of location illustrating the 1:1 side slopes of the sediment trap which are not installed per good engineering practices.

Inspection Photos  
Location Name: SWARTZ/2-4HZ  
Location ID: 482983



**Photo 12.** Photo illustrates there is no night cap on surface casing. Operator shall comply with Rule 406.e.(1) and follow their own BMP from the Wildlife Mitigation Plan.