

Schlumberger

## DUAL INDUCTION-SFL

COUNTY BACA  
FIELD S.W. PRITCHET  
LOCATION 19-32S-49W  
WELL MARCI #1  
COMPANY KILGORE AND TURNER

COMPANY KILGORE AND TURNER

WELL MARCI #1

FIELD S.W. PRITCHET

COUNTY BACA STATE COLORADO

LOCATION C SW/4 NW/4

API SERIAL NO SEC TWP RANGE  
19 32S 49W

Other Services:  
FDC-CNL-GR

Permanent Datum: GROUND LEVEL; Elev.: 5005  
Log Measured From KB 9 Ft. Above Perm. Datum  
Drilling Measured From KB

Elev.: K.B. 5014  
D.F. ---  
G.L. 5005

Date 3-24-78  
Run No. ONE  
Depth-Driller 2075  
Depth-Logger (Schl.) 2081  
Btm. Log Interval 2075  
Top Log Interval 400  
Casing-Driller 8 5/8 @ 398  
Casing-Logger 400  
Bit Size 7 7/8  
Type Fluid in Hole CHEMICAL  
Dens. Visc. 9.0 65  
pH Fluid Loss 9.5 9.6 ml  
Source of Sample FLOWLINE  
Rm @ Meas. Temp. 2.95 @59 °F  
Rmf @ Meas. Temp. 2.55 @63 °F  
Rr @ Meas. Temp. --- @--- °F  
Source: Rmf Rmc M ---  
Rm @ BHT 1.89 @96 °F  
TIME Circulation Stopped 3-24/1200  
Logger on Bottom 3-24/1600  
Max. Rec. Temp. 96 °F  
Equip. Location 7688 LIBERAL  
Recorded By RAYMER  
Witnessed By Mr. HATTON

The well name, location and borehole reference data were furnished by the customer.

SCALE CHANGES		Type Log	DEPTH	Scale Up Hole	Scale Down Hole
Run No.	ONE				
Service Order No.	23236				
Fluid Level	FULL				
Speed F.P.M.	100				
Salinity ppm. cl	300				
EQUIPMENT DATA					
Panel	DD-504				
Cartridge	DA-32				
Sonde	EA-49				
Memorizer Panel	AB-20				
Centralizer Type	FIN-4				
Stand-off - inches	1.5				
G.R. Panel	----				
CALIBRATION DATA					
SBR	1.0				
ILD Sonde Error	180				
ILM Sonde Error	120				
S.E. Set in Hole - Depth	---				
S.E. Corr. - Hole Size	---				
G.R. Background	---				
G.R. Source	---				
T.C. - Cal.	---				
LOGGING DATA					
SBR	1.0				
ILD Sonde Error Log	180				
ILM Sonde Error Log	120				
G.R. Scale per 100 Div.	---				
G.R. - T.C. Log	---				
REMARKS					

All interpretations are opinions based on inferences from electrical or other measurements and we cannot, and do not guarantee the accuracy or correctness of any interpretation, and we shall not, except in the case of gross or willful negligence on our part, be liable or responsible for any loss, costs, damages or expenses incurred or sustained by anyone resulting from any interpretation made by any of our officers, agents or employees. These interpretations are also subject to Clause 4 of our General Terms and Conditions as set out in our current Price Schedule.

## SPONTANEOUS-POTENTIAL

RESISTIVITY OHMS. M<sup>2</sup>/M  
SPHERICALLY FOCUSED LOG

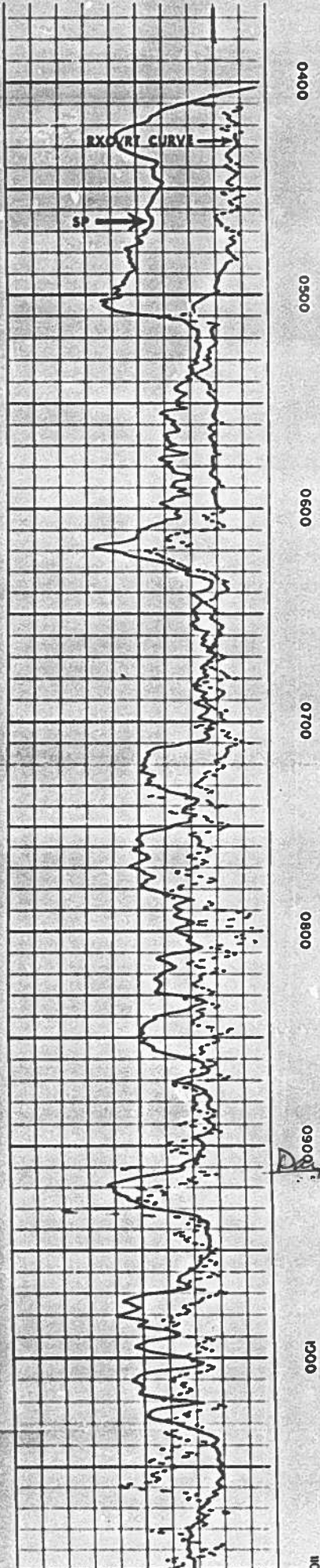
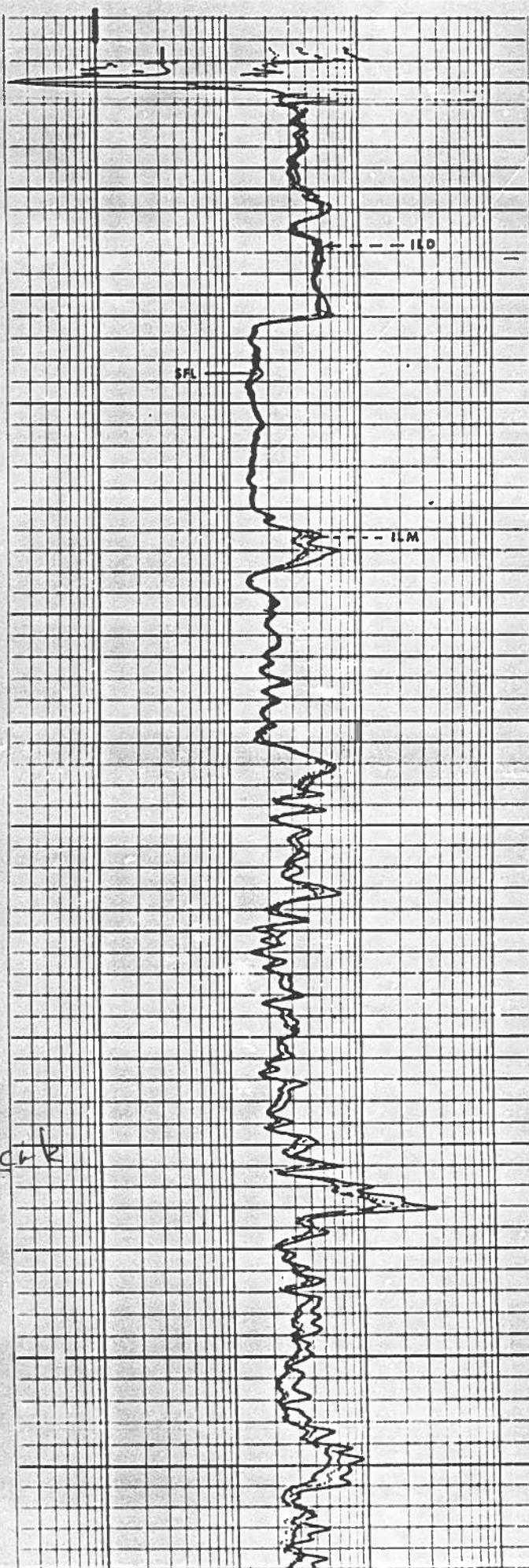
- 19 - + MILLIVOLTS

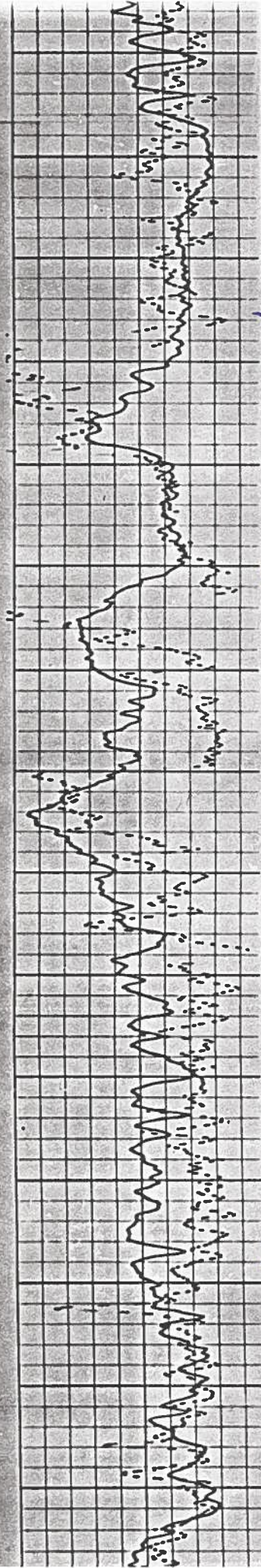
0.2 1.0 100 1000 2000  
MEDIUM INDUCTION  
DEEP INDUCTION



02158821

U-21-73 030303





1200

1100

1200

1300

1400

1500

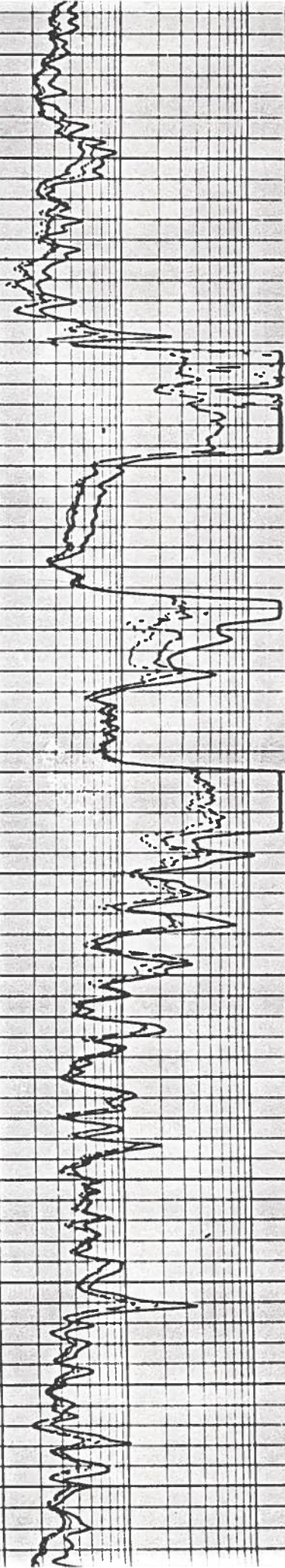
1600

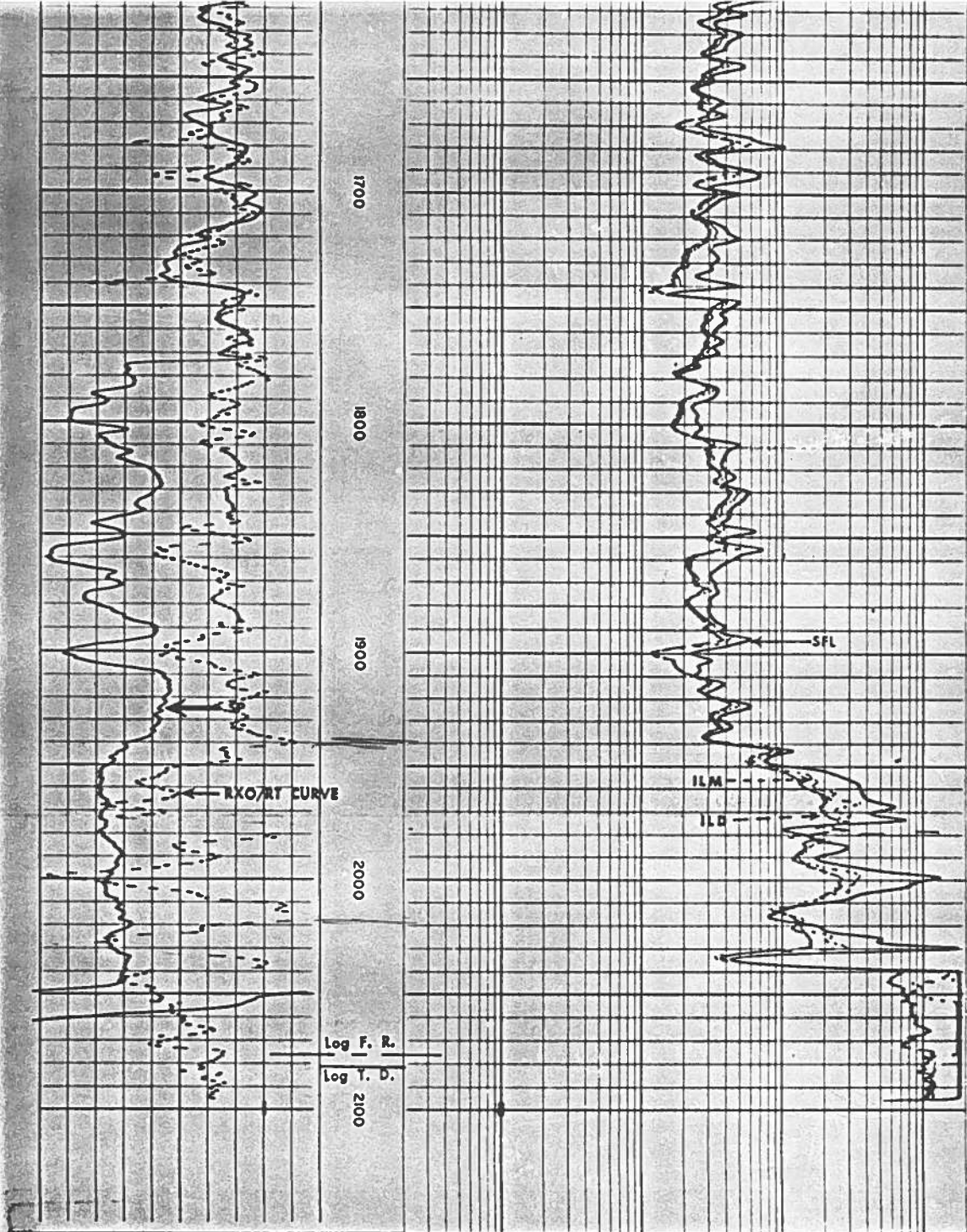
1700

Blaine

Groveland

Stone  
Covert





DETAIL LOG			
5" - 100'			
SPONTANEOUS-POTENTIAL	DEPTH	RESISTIVITY OHMS. M <sup>2</sup> /M	
<div> <div> <div>-</div> <div>10</div> <div>+</div> </div> <div>MILLIVOLTS</div> </div>		SPHERICALLY FOCUSED LOG	
		0.2	1.0 10 100 1000 2000
		MEDIUM INDUCTION	
		0.2	1.0 10 100 1000 2000
		DEEP INDUCTION	
		0.2	1.0 10 100 1000 2000