

# Construction and Stormwater Inspection

September 19, 2023

Operator: NOBLE ENERGY INC- #100322

Location ID: 483511

Inspection Document #: 697504870

Weld County, CO

NESE Section 18 T6N R64W

Chris Binschus  
Reclamation Specialist, COGCC



**COLORADO**

**Energy & Carbon Management  
Commission**

Department of Natural Resources



**Photo 1.** Photo taken from the location entrance off CR51, facing North. Photo illustrates a mailbox with permits to comply with Rule 406.c and Operator signage.

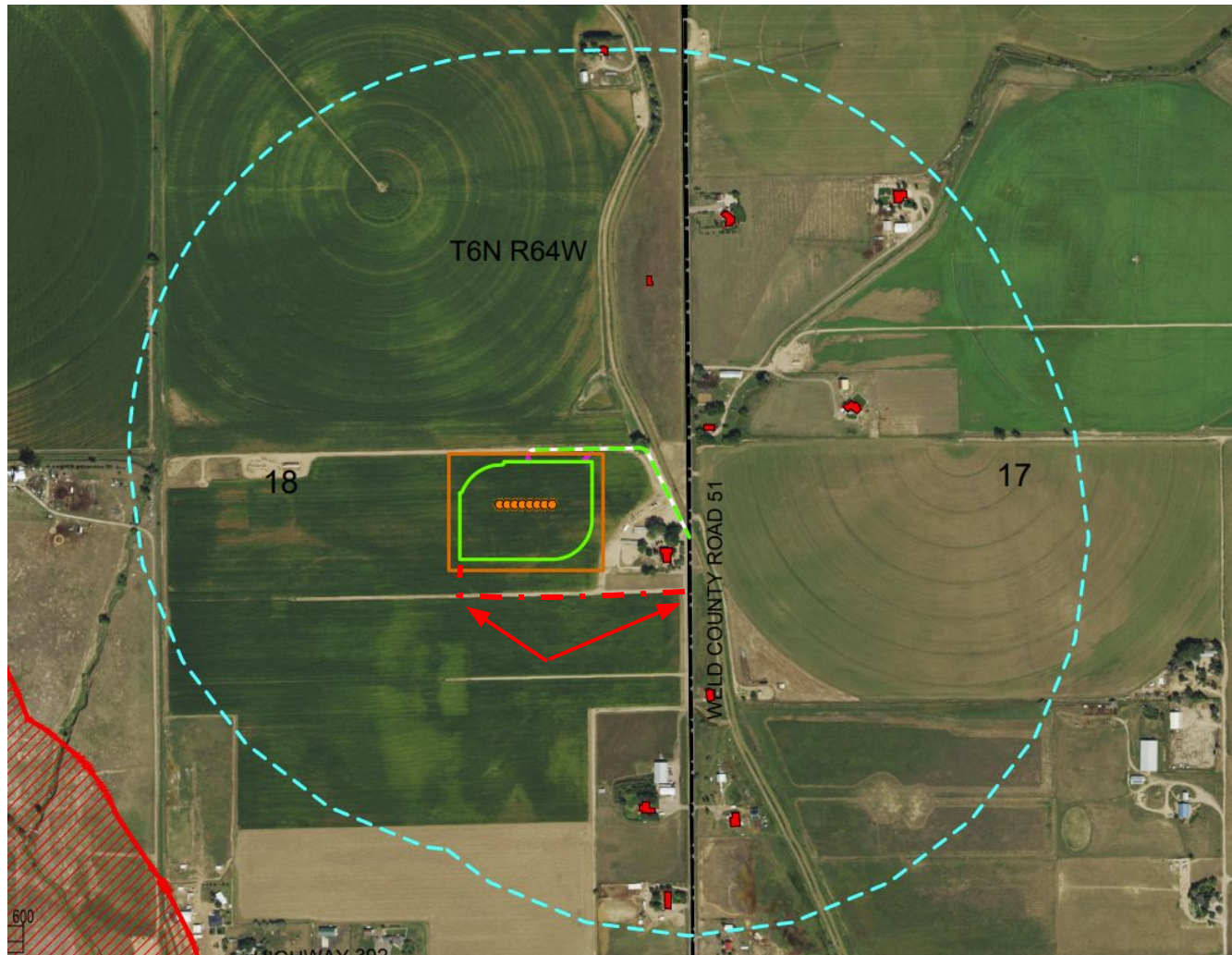


**Photo 2.** Photo taken from the location entrance, facing South. Photo illustrates culvert has been installed and BMP installation is in-process. Operator plans to install inlet and outlet protection devices. Operator also plans to install recycled asphalt at the location entrance and to install additional VTC devices.





**Photo 3.** Photo taken from the location entrance off CR51, facing West. Photo illustrates the Operator is using a different access route than what was permitted. Refer to Photo 4.



**Photo 4.** Photo taken of the permitted Access Road Map. Operator is no longer using the permitted access route and is using a southern access route (red dashed line and red arrows).





**Photo 5.** Photo taken from the southeastern perimeter of location, facing Northeast. Photo illustrates Operator has installed filterx wattles as an initial BMP around the perimeter of the location.

Note- vehicle traffic from contractors are driving the perimeter BMP. This was communicated to an Operator representative onsite.



**Photo 6.** Photo taken from the eastern perimeter of location, facing Northeast. Photo illustrates Operator has improperly installed filterx wattles as an initial BMP intended for run-on protection.

Note- this was communicated to an Operator representative onsite who said these were planned to be reinstalled or an additional filterx wattle would be installed to the interior of the existing BMP.





**Photo 7.** Photo taken from the eastern perimeter of location, facing West. Photo illustrates Operator is completing the cut/fill construction phase. Topsoil has been stockpiled along the southern, eastern and northern perimeter of the location.



**Photo 8.** Photo taken from the eastern perimeter of location, facing Northwest. Photo illustrates Operator is repairing a clay line that was hit during construction.





**Photo 9.** Photo taken from the northern perimeter of location, facing West. Photo illustrates a topsoil stockpile.

Note- the perimeter BMP along the toe of the stockpile was damaged but an additional perimeter BMP was installed to the outside.



**Photo 10.** Photo taken from the northern perimeter of location, facing East. Photo illustrates a diversion ditch BMP installed along the perimeter of the working pad surface which is directed to detention pond.





**Photo 11.** Photo taken from the northern perimeter of location, facing West. Photo illustrates the detention pond.



**Photo 12.** Photo taken from the western perimeter of location, facing South. Photo illustrates BMP areas which are still in process of construction.