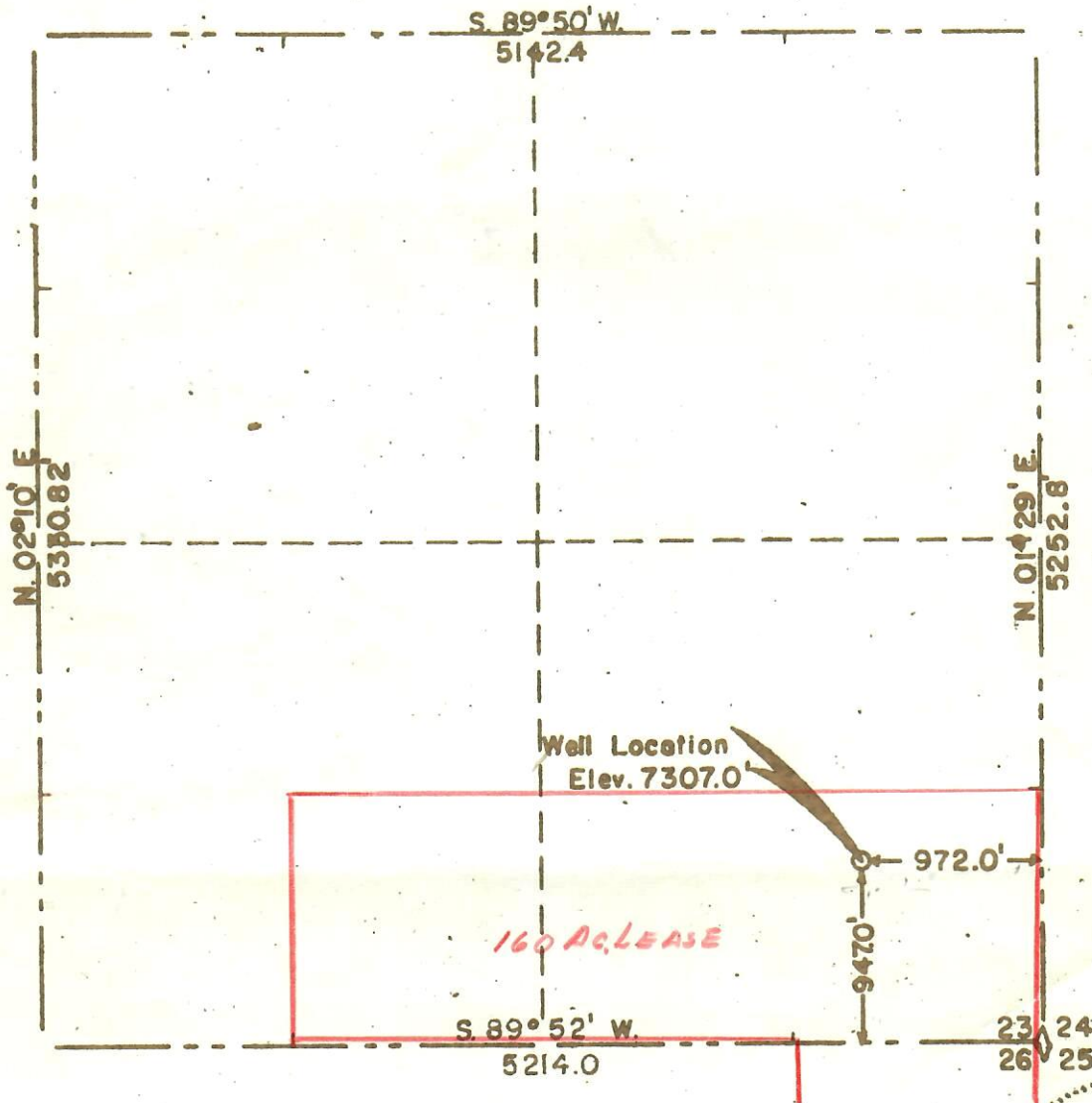


WELL LOCATION-B
SE 1/4 SE 1/4 SECTION 23,
T.6 N., R.87 W. 6th. PM.
ROUTT COUNTY, COLO

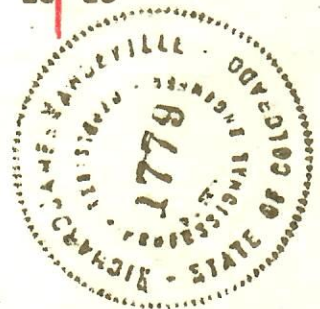


N



SCALE 1"=1000'

NOTE: Elevation run from PUBCO PETROLEUM CORP.
GRASSY CREEK COAL CO. No.1. Elevation 7306.



I, Richard J. Mandeville do hereby certify that
this plat was plotted from notes of a field survey
made under my supervision on MAY 11, 1960.

Richard J. Mandeville
Registered Engineer & Land Surveyor

WESTERN ENGINEERS
WELL LOCATION
SE 1/4 SE 1/4 SECTION 23
T.6 N., R.87 W. 6th. PM.
Routt County, Colorado.

SURVEYED W.F.G.
DRAWN C.J.B.
Grand Junction, Colo. 5/11/60