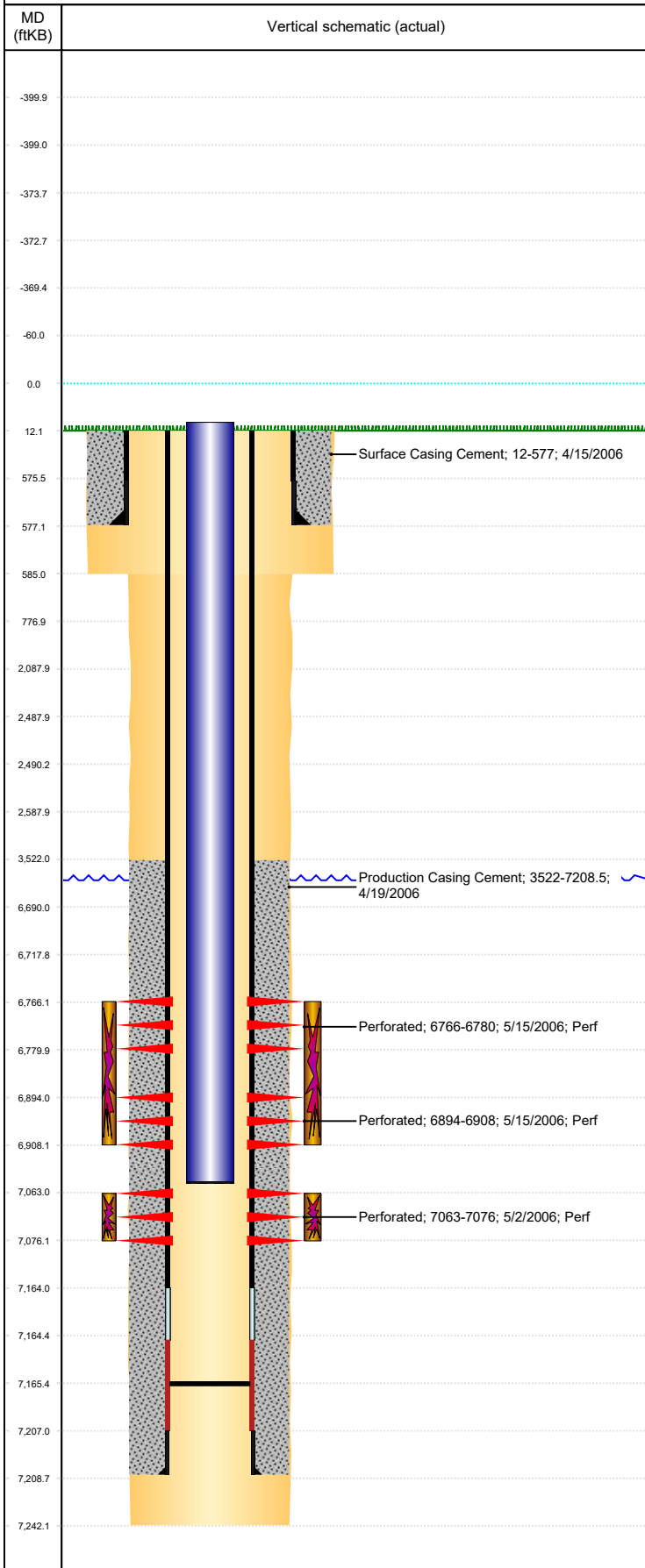




# P&A Wellbore For State

Well Name: ERICKSON A 8-17

Land, Original Hole, 9/27/2023 7:47:06 AM



Well Header										
Surface UWI 0512323751			Business Unit Rockies			Gov Auth Dist		Prod Tree Loc Land		
Orig. KB to Gnd (ft) 12.00		Original Spud Date 4/14/2006		Abandon Date		Well Sub-Status PR			High... N	
Comment										
Surface Location (Congressional)										
Qtr 3 NE	Qtr 4 NE	Section 8	Twnshp 6	Twnsh... N	Range 64	Rng E/... W	Latitude (°) 40.50422378 5	Longitude (°) -104.568577615		
Wellbore Sections										
Section Des			Hole Size (in)			Act Top (ftKB)		Act Btm (ftKB)		
SURFACE			12 1/4			12.0		585.0		
PRODUCTION			7 7/8			585.0		7,242.0		
Casing Strings										
Csg Des			Run Date		OD (in)	Wt/Len (lb/ft)	Grade	Top Depth (MD) (ftKB)	Set Depth (MD) (ftKB)	
Surface			4/15/2006		8 5/8	24.00	J-55	12	577	
Production Casing			4/19/2006		4 1/2	11.60	M-80	12	7208.5	
Cement										
Des					Start Date		Top (ftKB)		Btm (ftKB)	
Surface Casing Cement					4/15/2006		12.0		577.0	
Production Casing Cement					4/19/2006		3,522.0		7,208.5	
Zone Statuses										
Zone Name		Status Date	Status	Fluid Type	Job				Prod Method	
NIOBRARA		5/17/2006	PR	Water Water	DRILLING/COMPLETION - ORIGINAL, 4/14/2006...				Flowing Flowing	
NIOBRARA		4/14/2010	PR							
CODELL		4/14/2010	PR							
CODELL		3/30/2017	PR							
Perforation Data										
Linked Zone			Explosive Type	Entered Shot Total	Top (ftKB)		Btm (ftKB)		Date	
NIOBRARA, Original Hole				84	6,766.0		6,780.0		5/15/2006	
NIOBRARA, Original Hole				84	6,894.0		6,908.0		5/15/2006	
CODELL, Original Hole				52	7,063.0		7,076.0		5/2/2006	
Stimulation Intervals										
Zone				Start Date		Top (ftKB)		Btm (ftKB)		
NIOBRARA, Original Hole				5/15/2006		6,766.0		6,908.0		
CODELL, Original Hole				5/15/2006		7,063.0		7,076.0		
Other In Hole										
Run Date		Des			Make		OD (in)	Top (ftKB)	Btm (ftKB)	
Logs										
Date		Type					Depth Top (MD) (ftKB)		Btm (ftKB)	
4/19/2006		COMPENSATED DENSITY					2,800		7,193.0	
4/19/2006		INDUCTION					577		7,213.0	
4/24/2006		CBL/CCL/GR					3,400		7,137.0	
10/26/2017		GYRO					12		6,950.0	
Plug Back Total Depths										
Date		Type			Com				PBTD (ftKB)	
4/24/2006		FILL			DEPTH LOGGER ON CBL				7,138	
6/13/2006		FILL			CLEAN OUT, BLADE BIT LEFT ON BOTTOM @ 7165'				7,165	