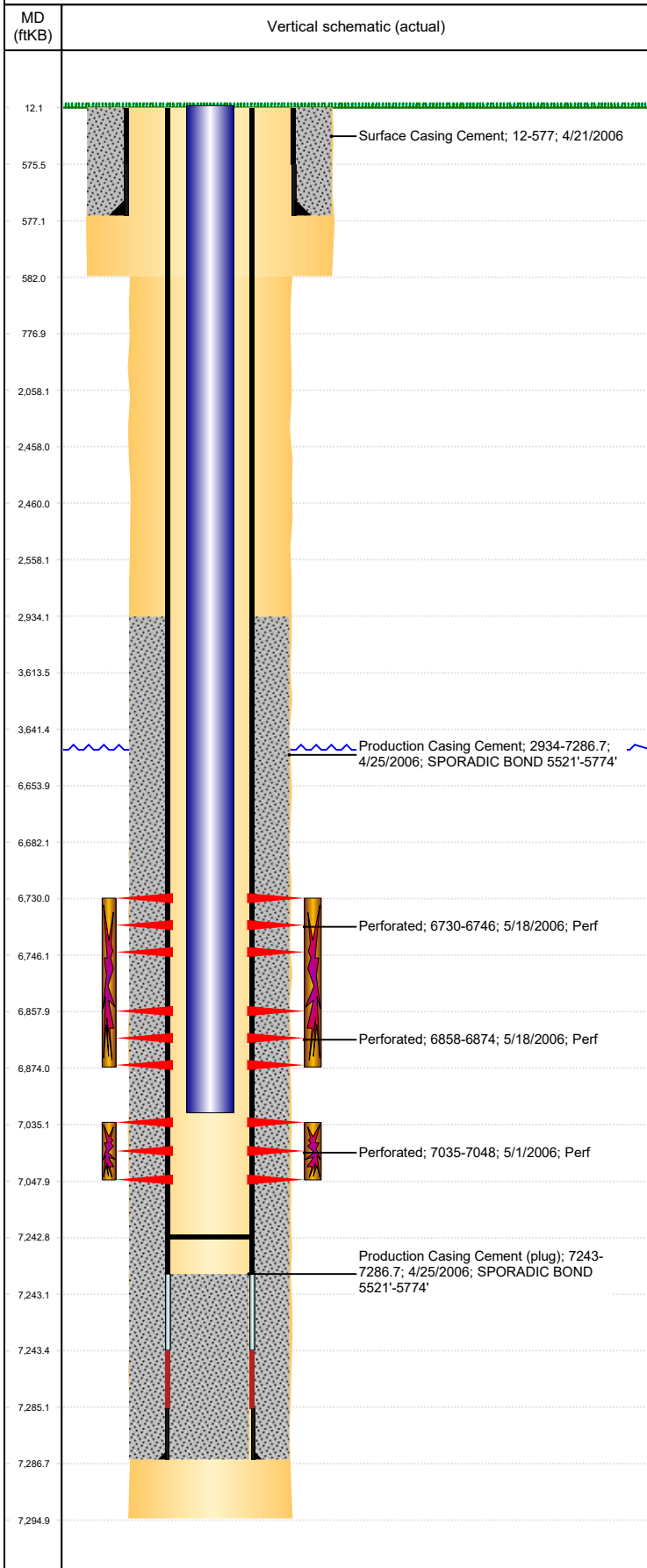




# P&A Wellbore For State

Well Name: ERICKSON A 8- 7

Land, Original Hole, 9/26/2023 1:22:34 PM



Well Header									
Surface UWI 0512323750			Business Unit Rockies			Gov Auth Dist		Prod Tree Loc Land	
Orig. KB to Gnd (ft) 12.00		Original Spud Date 4/20/2006		Abandon Date		Well Sub-Status PR			High... N
Comment DISCREPANCY IN TD DATE: RPTS & ST RPT 4/18/06 (BEFORE SPUD DATE) CSG TALLY DATE: 4/25/06, USED CSG TALLY DATE FOR TD DATE									
Surface Location (Congressional)									
Qtr 3 SW	Qtr 4 NE	Section 8	Twnshp 6	Twnsh... N	Range 64	Rng E/... W	Latitude (°) 40.50247898 2	Longitude (°) -104.571145733	
Wellbore Sections									
Section Des			Hole Size (in)			Act Top (ftKB)		Act Btm (ftKB)	
SURFACE			12 1/4			12.0		582.0	
PRODUCTION			7 7/8			582.0		7,295.0	
Casing Strings									
Csg Des		Run Date		OD (in)	Wt/Len (lb/ft)	Grade	Top Depth (MD) (ftKB)	Set Depth (MD) (ftKB)	
Surface		4/21/2006		8 5/8	24.00	J-55	12	577	
Production Casing		4/25/2006		4 1/2	11.60	M-80	12	7286.7	
Cement									
Des				Start Date		Top (ftKB)		Btm (ftKB)	
Surface Casing Cement				4/21/2006		12.0		577.0	
Production Casing Cement				4/25/2006		2,934.0		7,286.7	
Zone Statuses									
Zone Name		Status Date	Status	Fluid Type	Job			Prod Method	
NIOBRARA		5/20/2006	PR	Water Water	DRILLING/COMPLETION - ORIGINAL, 4/20/2006...			Flowing Flowing	
NIOBRARA		5/11/2010	PR						
CODELL		5/11/2010	PR						
CODELL		3/30/2017	PR						
Perforation Data									
Linked Zone			Explosive Type	Entered Shot Total	Top (ftKB)		Btm (ftKB)		Date
NIOBRARA, Original Hole				96	6,730.0		6,746.0		5/18/2006
NIOBRARA, Original Hole				96	6,858.0		6,874.0		5/18/2006
CODELL, Original Hole				52	7,035.0		7,048.0		5/1/2006
Stimulation Intervals									
Zone				Start Date		Top (ftKB)		Btm (ftKB)	
NIOBRARA, Original Hole				5/18/2006		6,730.0		6,874.0	
CODELL, Original Hole				5/18/2006		7,035.0		7,048.0	
Other In Hole									
Run Date		Des			Make		OD (in)	Top (ftKB)	Btm (ftKB)
Logs									
Date		Type					Depth Top (MD) (ftKB)	Btm (ftKB)	
4/25/2006		COMPENSATED DENSITY					2,850	7,275.0	
4/25/2006		INDUCTION					577	7,295.0	
5/1/2006		CBL/CCL/GR					2,798	5,010.0	
5/1/2006		CBL/CCL/GR					4,990	7,220.0	
Plug Back Total Depths									
Date		Type			Com				PBTD (ftKB)
5/1/2006		FILL			DEPTH LOGGER ON CBL				7,222
9/6/2006		FILL			CLEAN OUT				7,243