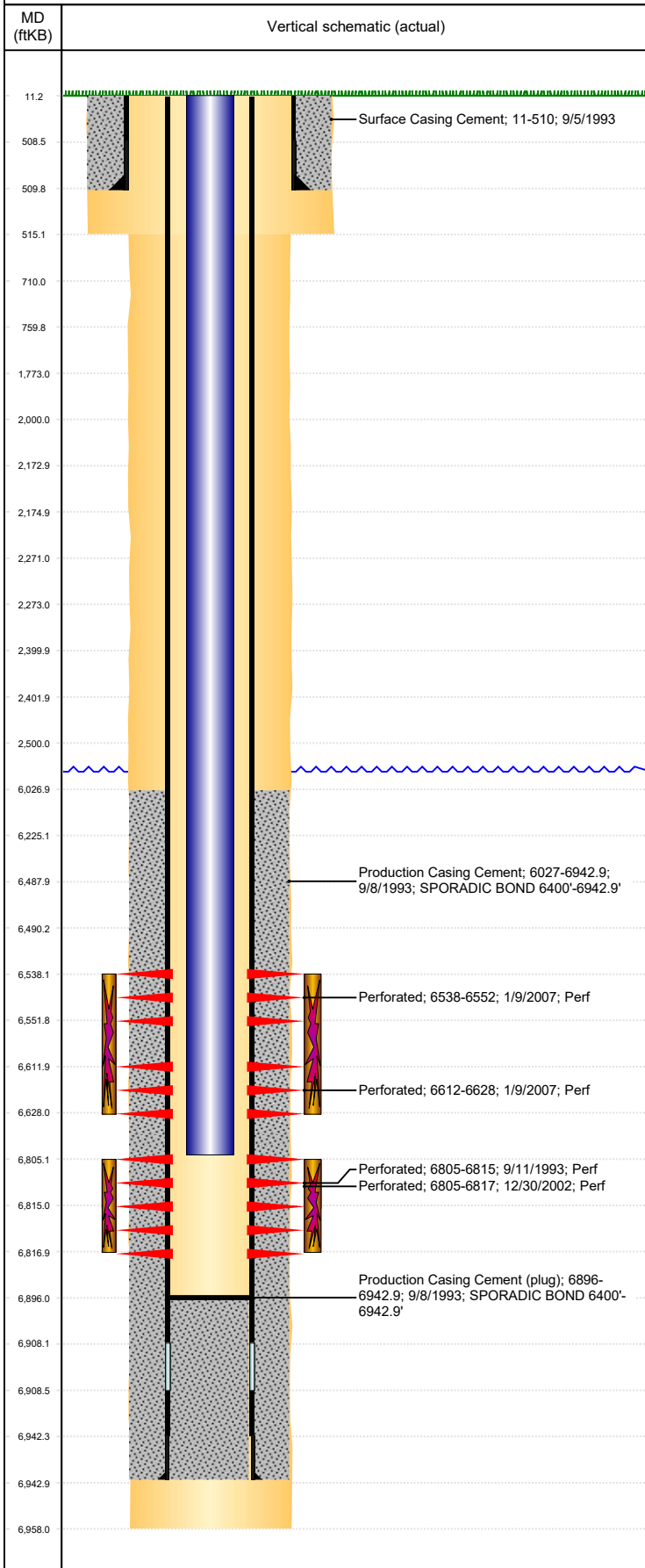




# P&A Wellbore For State

Well Name: LANG 15-14

Land, Original Hole, 9/20/2023 10:24:19 AM



Well Header									
Surface UWI 0512317341			Business Unit Rockies			Gov Auth Dist		Prod Tree Loc Land	
Orig. KB to Gnd (ft) 11.00		Original Spud Date 9/4/1993		Abandon Date		Well Sub-Status SI			High... N
Comment CITFP PUSHED TO 6896'									
WELLHEAD IS 3000#									
Surface Location (Congressional)									
Qtr 3 SE	Qtr 4 SW	Section 15	Twonshp 4	Twonsh... N	Range 64	Rng E/... W	Latitude (°) 40.30709128		Longitude (°) -104.539494808
Wellbore Sections									
Section Des			Hole Size (in)			Act Top (ftKB)		Act Btm (ftKB)	
SURFACE			12 1/4			11.0		515.0	
PRODUCTION			7 7/8			515.0		6,958.0	
Casing Strings									
Csg Des		Run Date		OD (in)	Wt/Len (lb/ft)	Grade	Top Depth (MD) (ftKB)	Set Depth (MD) (ftKB)	
Surface		9/5/1993		8 5/8	23.00	M-50	11	510	
Production Casing		9/7/1993		4 1/2	11.60	N-80	11	6942.9	
Cement									
Des					Start Date		Top (ftKB)		Btm (ftKB)
Surface Casing Cement					9/5/1993		11.0		510.0
Production Casing Cement					9/8/1993		6,027.0		6,942.9
Zone Statuses									
Zone Name		Status Date	Status	Fluid Type	Job			Prod Method	
NIOBRARA		3/1/2010	PR	Water				Flowing	
NIOBRARA		10/7/2016	SI						
CODELL		3/1/2010	PR	Water				Flowing	
CODELL		10/7/2016	SI						
Perforation Data									
Linked Zone			Explosive Type	Entered Shot Total	Top (ftKB)		Btm (ftKB)		Date
NIOBRARA, Original Hole				84	6,538.0		6,552.0		1/9/2007
NIOBRARA, Original Hole				96	6,612.0		6,628.0		1/9/2007
CODELL, Original Hole				20	6,805.0		6,815.0		9/11/1993
CODELL, Original Hole				48	6,805.0		6,817.0		12/30/2002
Stimulation Intervals									
Zone				Start Date		Top (ftKB)		Btm (ftKB)	
NIOBRARA, Original Hole				2/7/2007		6,538.0		6,628.0	
CODELL, Original Hole				9/21/1993		6,805.0		6,815.0	
CODELL, Original Hole				1/2/2003		6,805.0		6,817.0	
Other In Hole									
Run Date		Des			Make		OD (in)	Top (ftKB)	Btm (ftKB)
Logs									
Date		Type					Depth Top (MD) (ftKB)		Btm (ftKB)
9/8/1993		COMPENSATED DENSITY					4,000		6,956.0
9/8/1993		INDUCTION					510		6,956.0
9/11/1993		CBL/CCL/GR					5,800		6,889.0
Plug Back Total Depths									
Date		Type			Com				PBTD (ftKB)
1/8/2007		FILL			CLEAN OUT				6,896
3/12/2007		PLUG REMNANTS			DRILL CITFP AND PUSH TO 6896'				6,896