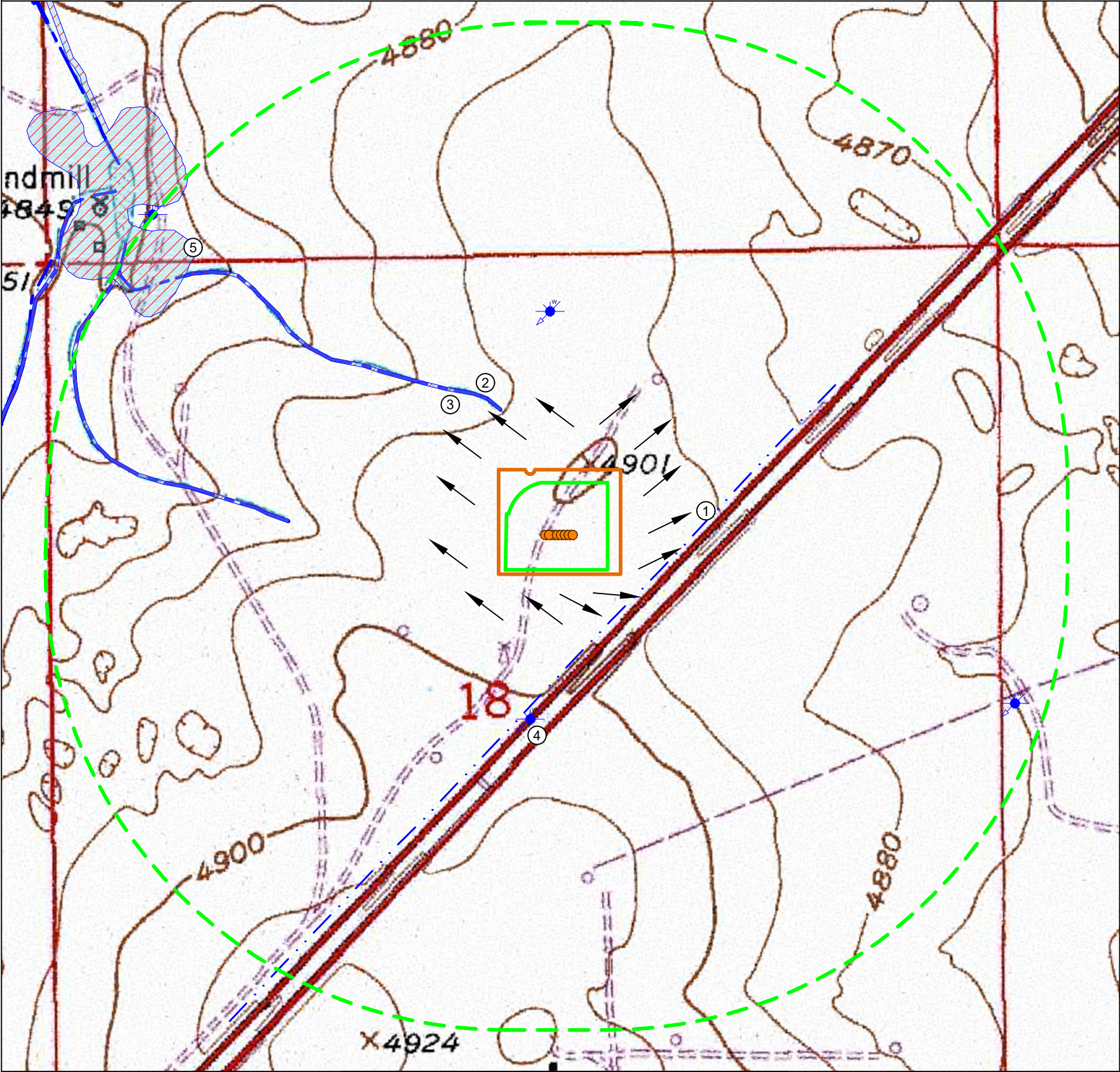


YY18-07 PAD
HYDROLOGY MAP



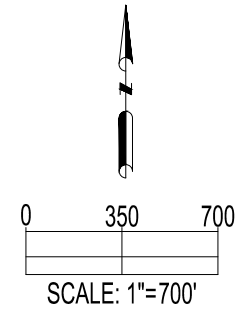
IMPROVEMENTS: (AS MEASURED FROM THE PROPOSED WORKING PAD SURFACE)	
1. DITCH:	±218' SE
2. SEASONALLY FLOODED INTERMITTENT RIVERINE WETLAND:	±464' NW, ±1242' W
3. INTERMITTENT STREAM:	±474' NW, ±1251' W, ±2615' NW
4. WATER WELL:	±857' S, ±983' N, ±2461' SE
5. SEASONALLY FLOODED EMERGENT PERSISTENT PALUSTRINE WETLAND:	±2281' NW

THERE ARE NO PUBLIC WATER SYSTEMS FACILITIES, PWS INTAKES <15 MILES UPSTREAM, OR RULE 411 BUFFER ZONES WITHIN THE 2,640' RADIUS

NEAREST WATER WELL INFO: (AS MEASURED FROM THE NEAREST EDGE OF THE PROPOSED WORKING PAD SURFACE)			
PERMIT #	RECEIPT #	STATIC WATER LEVEL	DISTANCE/DIRECTION
N/A	3684370	N/A	±857' S
55594	0465465C	363'	±2971' S

NEAREST SURFACE WATER FEATURE: (AS MEASURED FROM THE NEAREST EDGE OF THE PROPOSED WORKING PAD SURFACE)	
SEASONALLY FLOODED EMERGENT PERSISTENT PALUSTRINE WETLAND:	±2281' NW

NOTE: THE SEASONALLY FLOODED INTERMITTENT RIVERINE WETLANDS AND ASSOCIATED INTERMITTENT STREAM IDENTIFIED IN ITEMS 2 AND 3 ABOVE WERE DETERMINED TO BE UPLAND FEATURES DURING FIELD HYDROLOGIC SURVEY (SEE AQUATIC RESOURCES INVENTORY REPORT SUBMITTED WITH WILDLIFE PROTECTION PLAN).



DATA SOURCE:
TOPO MAP: USGS
WATER WELLS: COLORADO DWR
NHD: USGS
WETLANDS: USFWS
FLOODPLAINS: FEMA
PWS/RULE 411 BUFFERS: COGCC/CDPHE

PUBLICLY AVAILABLE DATA SOURCES HAVE NOT BEEN INDEPENDENTLY VERIFIED BY ASCENT.

FIELD VERIFICATION OF NEARBY WATER RESOURCES HAS BEEN COMPLETED AND THE RESULTS ARE INCLUDED IN ARIR WITHIN THE WILDLIFE PROTECTION PLAN

DISCLAIMER:
THIS PLOT DOES NOT REPRESENT A MONUMENTED LAND SURVEY AND SHOULD NOT BE RELIED UPON TO DETERMINE BOUNDARY LINES, PROPERTY OWNERSHIP OR OTHER PROPERTY INTERESTS. PARCEL LINES, IF DEPICTED HAVE NOT BEEN FIELD VERIFIED AND MAY BE BASED UPON PUBLICLY AVAILABLE DATA THAT ALSO HAS NOT BEEN INDEPENDENTLY VERIFIED.



FIELD DATE: 04-18-23	DRAWING DATE: 05-05-23	SITE NAME: YY18-07 PAD
DRAWN BY: HJL	CHECKED BY: DDM	SURFACE LOCATION: SW 1/4 NE 1/4 SEC. 18, T2N, R63W, 6TH P.M. WELD COUNTY, COLORADO

LEGEND:	● = PROPOSED WELL	▨ = WETLAND
	⚡ = WATER WELL	⋯ = DITCH
	→ = FLOW DIRECTION	--- = INTERMITTENT STREAM

--- = 2640' BUFFER FROM WPS
--- = WORKING PAD SURFACE
--- = OIL & GAS LOCATION

