

Operator: CRESTONE PEAK RESOURCES OPERATING LLC

Location Name: Blue 3-65 32-33/1H

Loc ID: 439625

Inspection: 709400442



Exhibit A

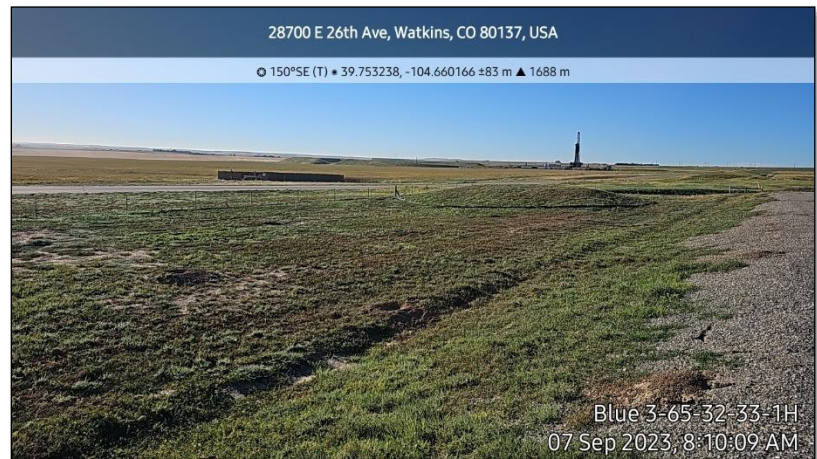


Exhibit B



Exhibit C

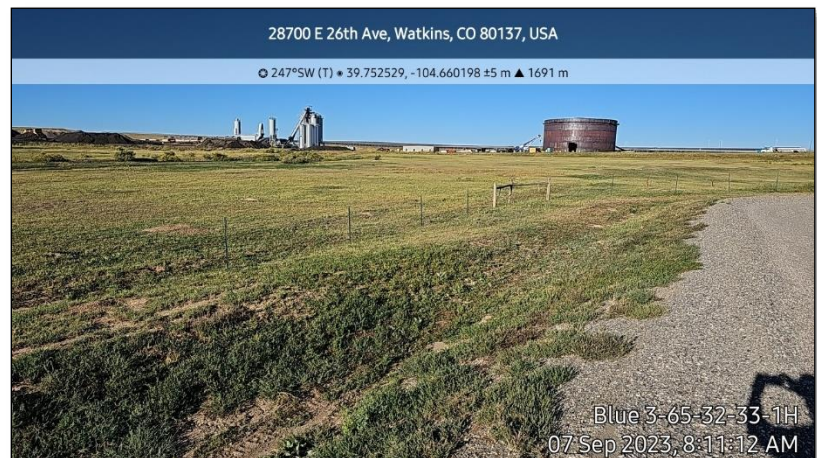


Exhibit D



Exhibit E

CA: Failure to control and manage weeds to prevent weed waste and prevent the spread of seeds onto adjacent lands. Comply with Rule 606.c.

CA Resolution: Operator reports that weeds and debris were mitigated with mowing and line trimming on 8/31/2023 to comply with Rule 606.c. It has been noted that the spraying to help maintain the weeds is currently scheduled for 9/9/2023.