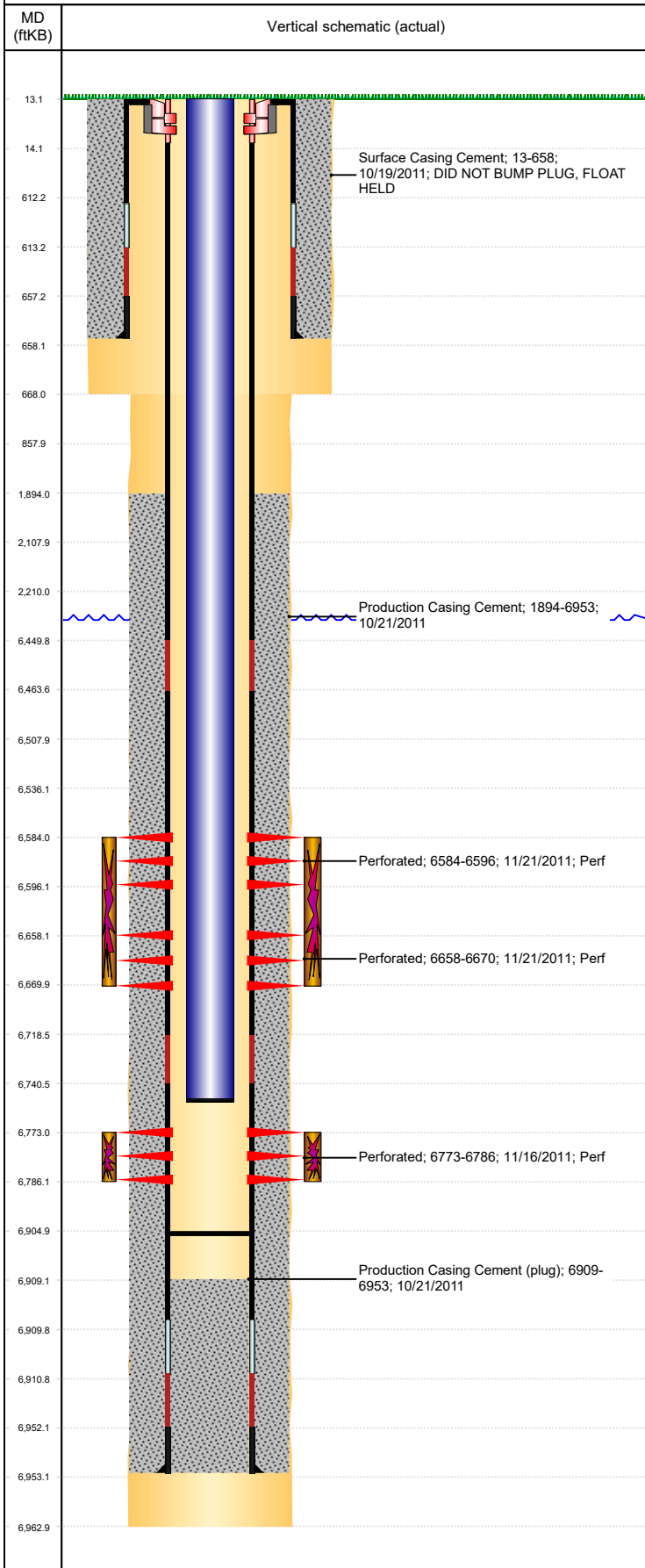




# P&A Wellbore For State

Well Name: WILMOTH C14-29

Land, Original Hole, 9/5/2023 12:25:31 PM



## Well Header

Surface UWI 0512334184	Business Unit Rockies	Gov Auth Dist	Prod Tree Loc Land
Orig. KB to Gnd (ft) 13.00	Original Spud Date 10/18/2011	Abandon Date	Well Sub-Status PR
High... N			

Comment

318A.e LOCATION!

## Surface Location (Congressional)

Qtr 3 NW	Qtr 4 NW	Section 14	Twonshp 4	Twonsh... N	Range 64	Rng E... W	Latitude (°) 40.31922250 7	Longitude (°) -104.522710797
-------------	-------------	---------------	--------------	----------------	-------------	---------------	----------------------------------	---------------------------------

## Wellbore Sections

Section Des	Hole Size (in)	Act Top (ftKB)	Act Btm (ftKB)
SURFACE	12 1/4	13.0	668.0
PRODUCTION	7 7/8	668.0	6,963.0

## Casing Strings

Csg Des	Run Date	OD (in)	Wt/Len (lb/ft)	Grade	Top Depth (MD) (ftKB)	Set Depth (MD) (ftKB)
Surface	10/18/2011	8 5/8	24.00	J-55	13.1	658
Production Casing	10/21/2011	4 1/2	11.60	M-80	13	6953

## Cement

Des	Start Date	Top (ftKB)	Btm (ftKB)
Surface Casing Cement	10/19/2011	13.0	658.0
Production Casing Cement	10/21/2011	1,894.0	6,953.0

## Zone Statuses

Zone Name	Status Date	Status	Fluid Type	Job	Prod Method
CODELL	11/23/2011	PR		DRILLING/COMPLETION - ORIGINAL, 9/30/2011...	
NIOBRARA	11/23/2011	PR		DRILLING/COMPLETION - ORIGINAL, 9/30/2011...	

## Perforation Data

Linked Zone	Explosive Type	Entered Shot Total	Top (ftKB)	Btm (ftKB)	Date
NIOBRARA, Original Hole	B	24	6,584.0	6,596.0	11/21/2011
NIOBRARA, Original Hole	C	24	6,658.0	6,670.0	11/21/2011
CODELL, Original Hole	1	52	6,773.0	6,786.0	11/16/2011

## Stimulation Intervals

Zone	Start Date	Top (ftKB)	Btm (ftKB)
NIOBRARA, Original Hole	11/21/2011	6,584.0	6,670.0
CODELL, Original Hole	11/21/2011	6,773.0	6,786.0

## Other In Hole

Run Date	Des	Make	OD (in)	Top (ftKB)	Btm (ftKB)

## Logs

Date	Type	Depth Top (MD) (ftKB)	Btm (ftKB)
10/21/2011	Caliper/Comp. Density/Neutron/GR/SP/ML	657	6,956.0
10/21/2011	DIL/GR/SP/Caliper	657	6,956.0
11/15/2011	CBL/CCL/GR/VDL	1,450	6,888.0

## Plug Back Total Depths

Date	Type	Com	PBTD (ftKB)
11/15/2011	FILL	DEPTH-LOGGER/CBL	6,893
1/16/2012	PLUG REMNANTS		6,905