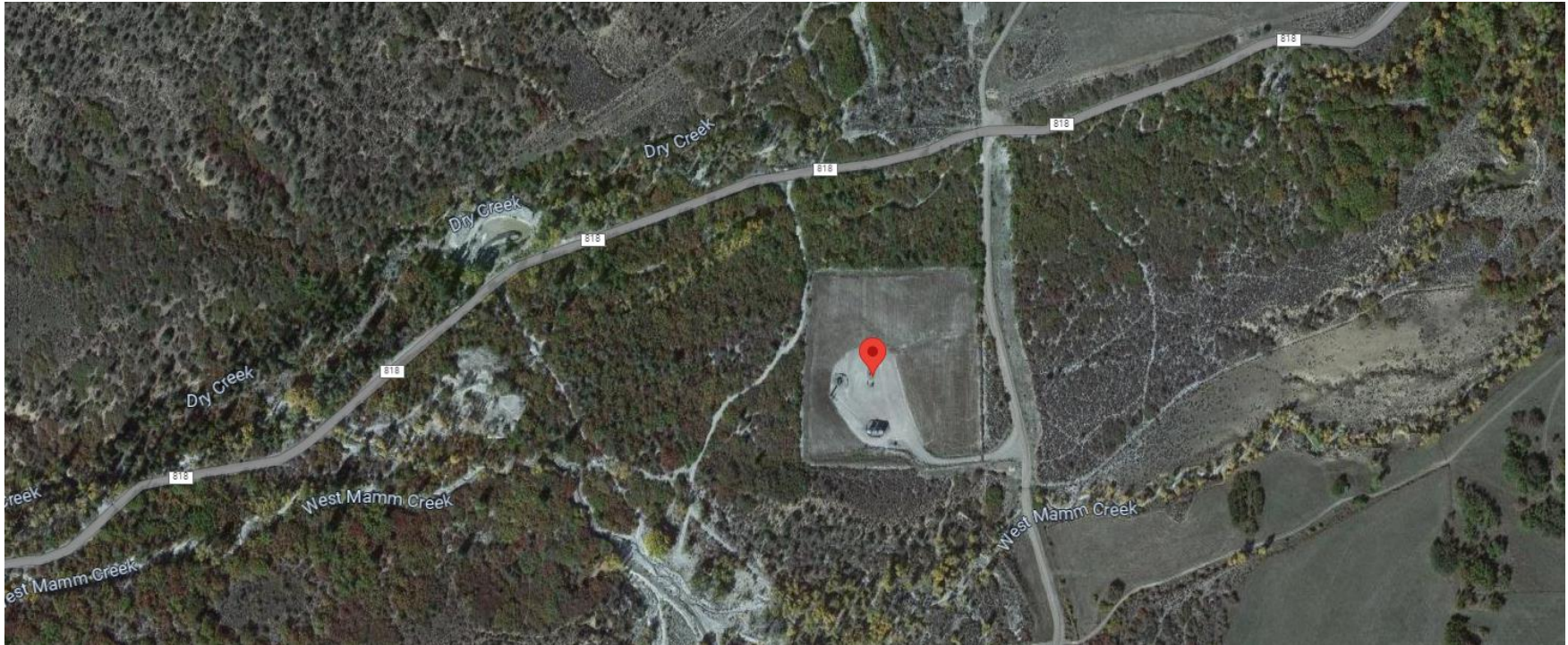


**Storm Water Management and Erosion control**  
**Location Name: CAERUS PICEANCE LLC K22W Pad**  
**Location # 433706**



**Location Overview: Location is within High Priority/Density/Black Bear/NSO Habitat areas. Location is approximately 115 yards from West Mamm Creek & approximately 257 yards from Dry Creek. Location is within close proximity to Rule 411.b Generalized External Buffer.**

**Section/Township/Range: 22 7S93W**



**COLORADO**  
Energy & Carbon Management  
Commission  
Department of Natural Resources

**Storm water Management and Erosion control**  
**Location Name: CAERUS PICEANCE LLC K22W Pad**  
**Location # 433706**



**North West corner of location.**



**North East corner of location.**



**South West corner of location.**



**South East corner of location.**

