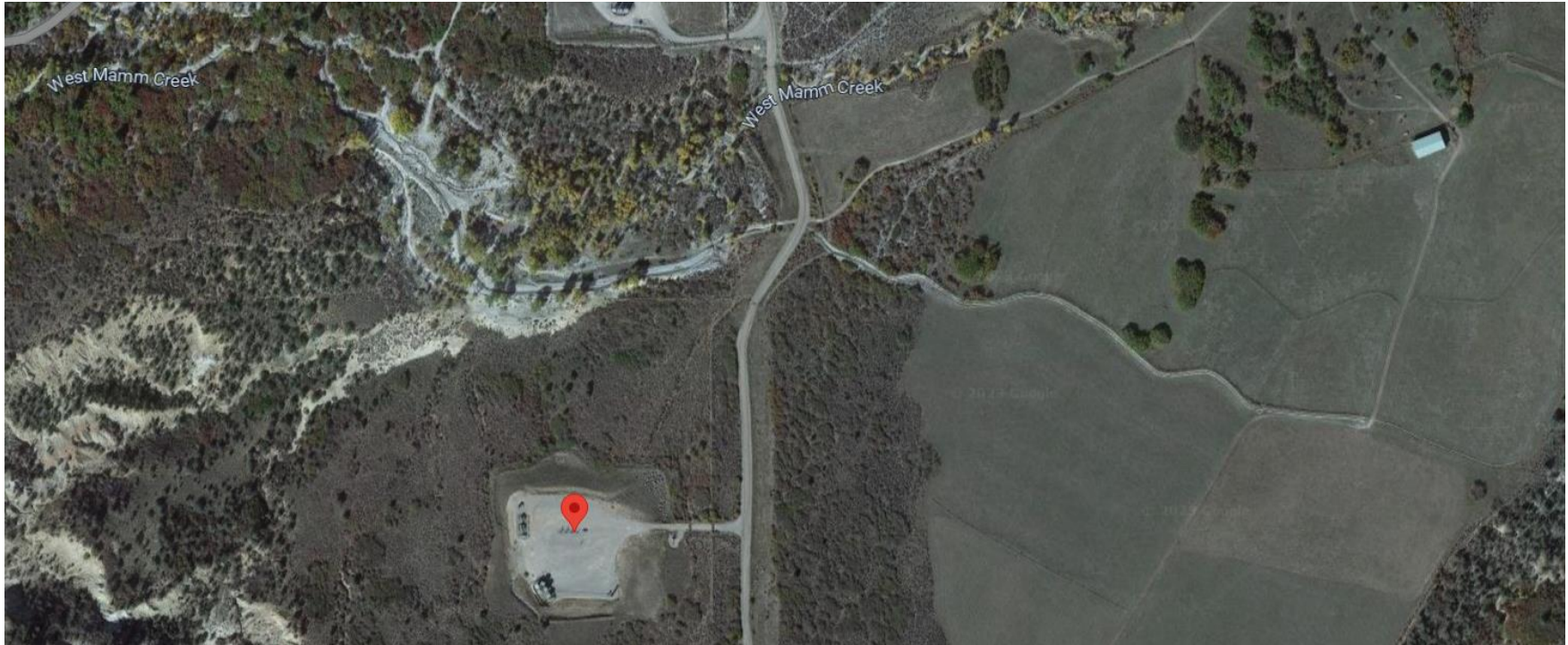


Storm Water Management and Erosion control
Location Name: CAERUS PICEANCE LLC N22W Pad
Location # 324286



**Location Overview: Location is within High
Priority/Density/Black Bear Habitat areas & in close proximity
to NSO Habitat area. Location is approximately 273 yards
from West Mamm Creek. Location is within close proximity to
Rule 411.b Generalized External Buffer.
Section/Township/Range: 22 7S93W**



COLORADO
Energy & Carbon Management
Commission
Department of Natural Resources

Storm water Management and Erosion control
Location Name: CAERUS PICEANCE LLC N22W Pad
Location # 324286



North West corner of location.



North East corner of location.



South West corner of location.



South East corner of location.

Storm water Management and Erosion control
Location Name: CAERUS PICEANCE LLC N22W Pad
Location # 324286



Photo # 7986 Erosion & transport of sediment/insufficient BMP's (NW corner of location)



Photo # 7988 Erosion & transport of sediment/insufficient BMP's (NW corner of location)

Storm water Management and Erosion control
Location Name: CAERUS PICEANCE LLC N22W Pad
Location # 324286



Photo # 7989 Erosion & transport of sediment/insufficient BMP's (NW corner of location)



Photo # 7990 Erosion & transport of sediment/insufficient BMP's (NW corner of location)

Storm water Management and Erosion control
Location Name: CAERUS PICEANCE LLC N22W Pad
Location # 324286



Photo # 7992 Erosion & transport of sediment/insufficient BMP's (NW corner of location)



Photo # 7993 Erosion & transport of sediment/insufficient BMP's (NW corner of location)

Storm water Management and Erosion control
Location Name: CAERUS PICEANCE LLC N22W Pad
Location # 324286



Photo # 7994 Erosion & transport of sediment/insufficient BMP's (NW corner of location)



Photo # 7995 Erosion & transport of sediment/insufficient BMP's (NW corner of location)

Storm water Management and Erosion control
Location Name: CAERUS PICEANCE LLC N22W Pad
Location # 324286



Photo # 7996 Erosion & transport of sediment/insufficient BMP's (NW corner of location)



Photo # 7997 Erosion & transport of sediment/insufficient BMP's (NW corner of location)