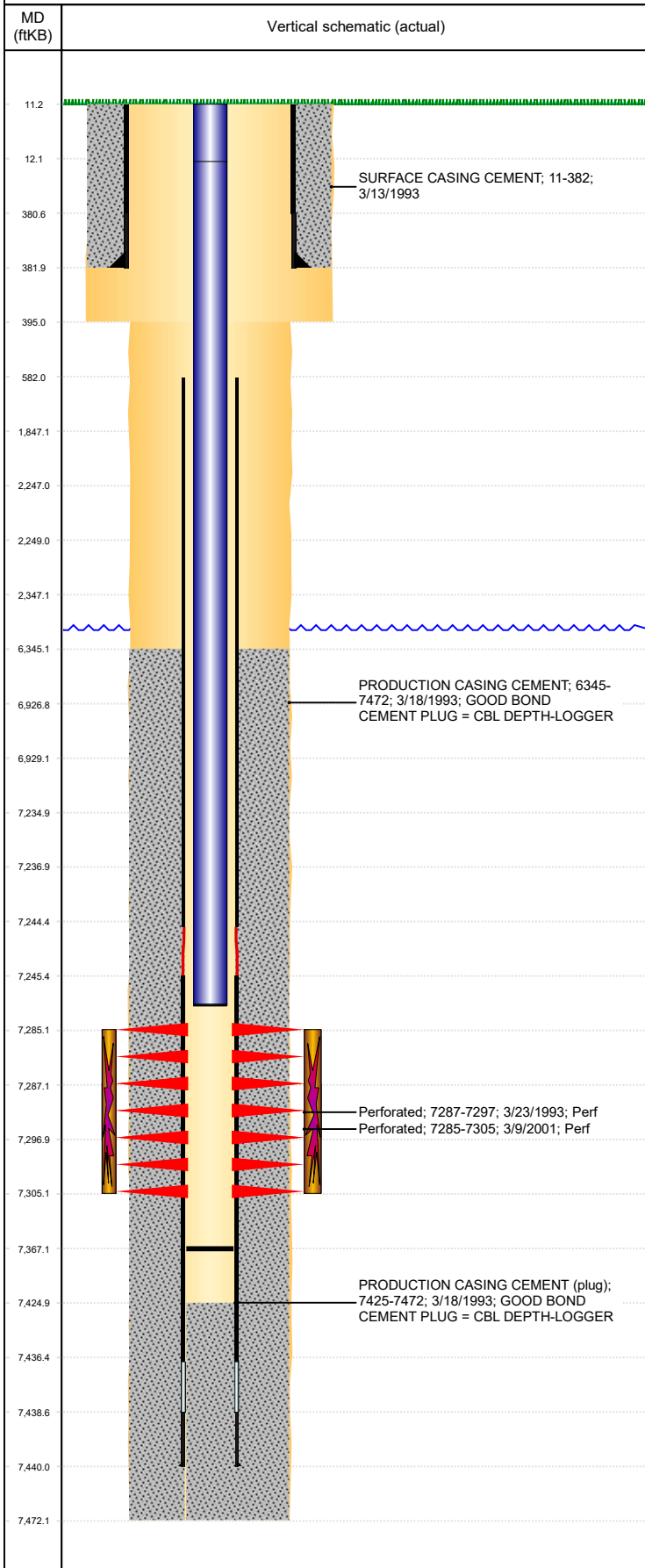




P&A Wellbore For State

Well Name: GOLLNER O27-08

Land, Original Hole, 8/31/2023 1:28:13 PM



Well Header									
Surface UWI 0512315973			Business Unit Rockies		Gov Auth Dist			Prod Tree Loc Land	
Orig. KB to Gnd (ft) 11.00		Original Spud Date 3/13/1993		Abandon Date		Well Sub-Status PR		High... N	
Comment DISCREPANCIES -- DR RPT TD 7450; ST RPT TD 7472. DR RPT PBDT 7425; ST RPT PBDT 7436									
Surface Location (Congressional)									
Qtr 3 SE	Qtr 4 NE	Section 27	Twnshp 4	Twnsh... N	Range 67	Rng E/... W	Latitude (°) 40.28481663 3	Longitude (°) -104.869256266	
Wellbore Sections									
Section Des			Hole Size (in)			Act Top (ftKB)		Act Btm (ftKB)	
SURFACE			12 1/4			11.0		395.0	
PRODUCTION			7 7/8			395.0		7,472.0	
Casing Strings									
Csg Des		Run Date		OD (in)	Wt/Len (lb/ft)	Grade	Top Depth (MD) (ftKB)	Set Depth (MD) (ftKB)	
Surface		3/13/1993		8 5/8	24.00	?	11	382	
Production Casing		3/18/1993		2 7/8	8.70	PH-6 HY...	11	7440	
Cement									
Des				Start Date		Top (ftKB)		Btm (ftKB)	
SURFACE CASING CEMENT				3/13/1993		11.0		382.0	
PRODUCTION CASING CEMENT				3/18/1993		6,345.0		7,472.0	
Zone Statuses									
Zone Name	Status Date	Status	Fluid Type	Job			Prod Method		
CODELL	5/9/2017	SI							
CODELL	5/5/2018	PR							
Perforation Data									
Linked Zone		Explosive Type	Entered Shot Total	Top (ftKB)		Btm (ftKB)		Date	
CODELL, Original Hole			80	7,285.0		7,305.0		3/9/2001	
CODELL, Original Hole			40	7,287.0		7,297.0		3/23/1993	
Stimulation Intervals									
Zone			Start Date			Top (ftKB)		Btm (ftKB)	
CODELL, Original Hole			3/15/2001			7,285.0		7,305.0	
CODELL, Original Hole			9/20/2004			7,285.0		7,305.0	
CODELL, Original Hole			3/24/1993			7,287.0		7,297.0	
Other In Hole									
Run Date		Des			Make		OD (in)	Top (ftKB)	Btm (ftKB)
Logs									
Date		Type					Depth Top (MD) (ftKB)		Btm (ftKB)
3/17/1993		COMPENSATED NEUTRON					4,000		7,438.0
3/17/1993		INDUCTION					4,000		4,900.0
3/23/1993		CEMENT BOND					6,150		7,416.0
Plug Back Total Depths									
Date		Type		Com					PBDT (ftKB)
3/23/1993		CEMENT PLUG		CBL DEPTH-LOGGER					7,425
9/23/2004		FILL		TAG FOLLOWING TRI-FRAC					7,367