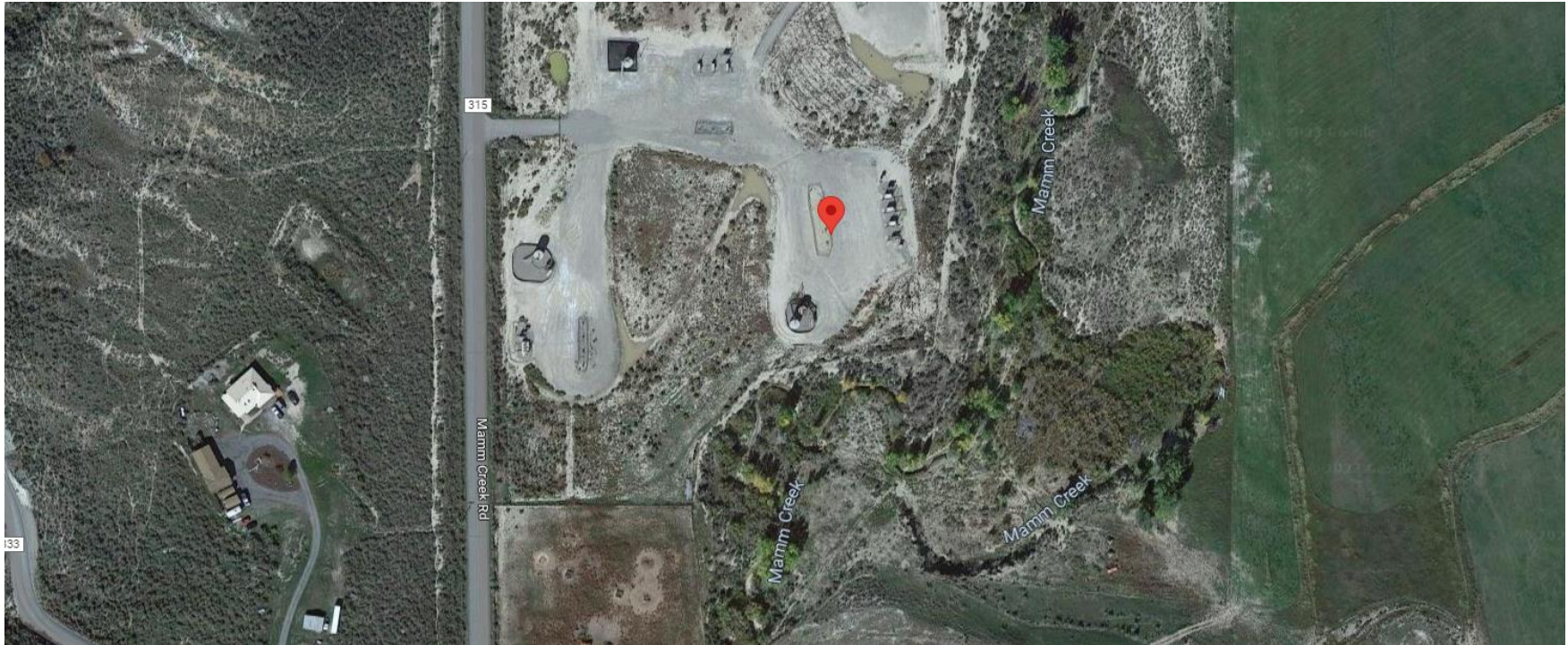


**Storm Water Management and Erosion control**  
**Location Name: CAERUS PICEANCE LLC G32NE Pad**  
**Location #: 334853**



**Location Overview: Location is approximately 28 yards from  
Mamm Creek. Location is within Black Bear/High  
Priority/Density/NSO Habitat areas.  
Section/Township/Range: 32 6S92W**



**Storm water Management and Erosion control**  
**Location Name: CAERUS PICEANCE LLC G32NE Pad**  
**Location #: 334853**



**North West corner of location.**



**North East corner of location.**



**South West corner of location.**



**South East corner of location.**





**Storm water Management and Erosion control**  
**Location Name: CAERUS PICEANCE LLC G32NE Pad**  
**Location #: 334853**



**Photo # 7490 Stockpiled soils/insufficient BMP's**



**Photo # 7492 Stockpiled soils/insufficient BMP's**



**Storm water Management and Erosion control**  
**Location Name: CAERUS PICEANCE LLC G32NE Pad**  
**Location #: 334853**



**Photo # 7494 Stockpiled soils/insufficient BMP's**



**Photo # 7496 Stockpiled soils/insufficient BMP's**