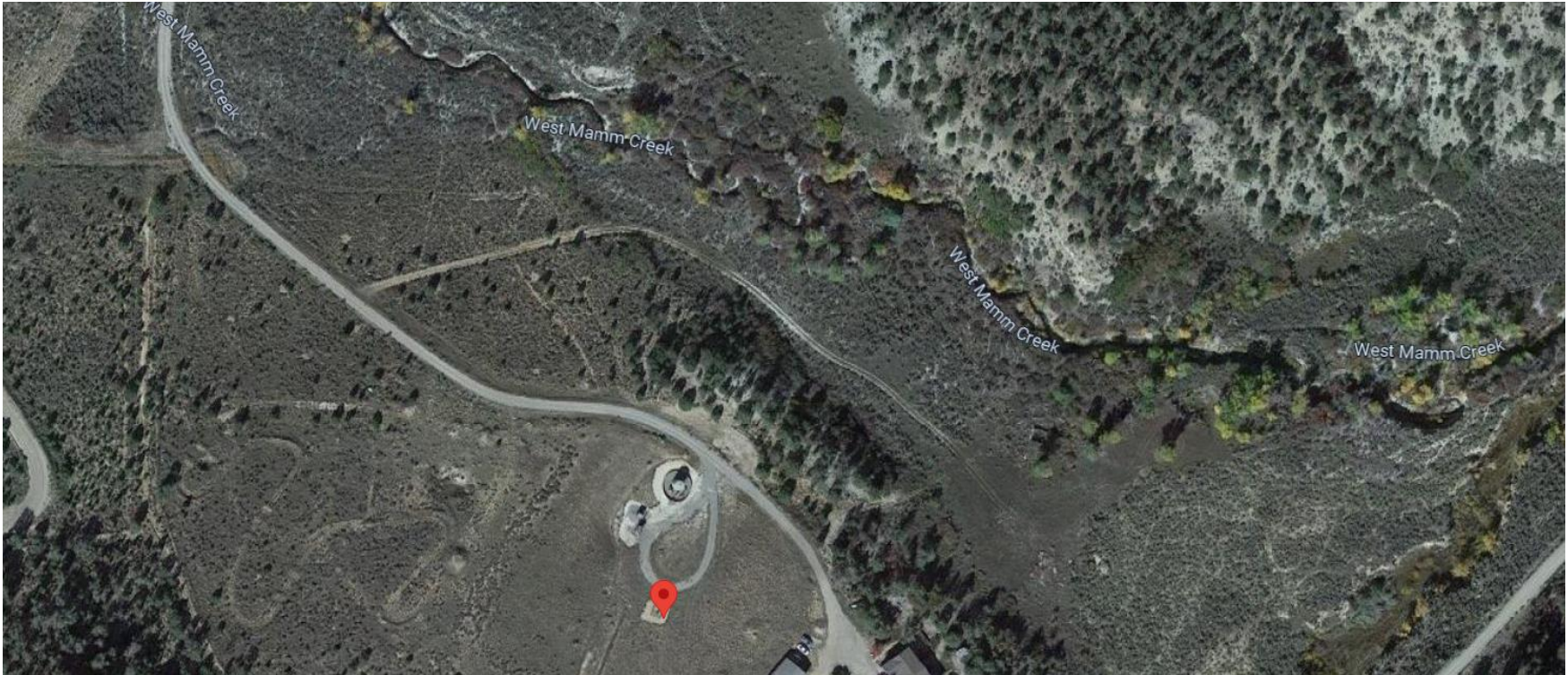


**Storm Water Management and Erosion control**  
**Location Name: CAERUS PICEANCE LLC D24W Pad**  
**Location ID: 323904**



**Location Overview: Location is within Black Bear/High Priority/NSO/Density Habitat areas. Location is approximately 100 yards from West Mamm Creek & approximately 211 yards from Gant Gulch.**

**Section/Township/Range: 24 7S93W**



**COLORADO**  
Energy & Carbon Management  
Commission  
Department of Natural Resources



**Storm water Management and Erosion control**  
**Location Name: CAERUS PICEANCE LLC D24W Pad**  
**Location ID: 323904**



**North West corner of location.**



**North East corner of location.**



**South West corner of location.**



**South East corner of location.**