



00586779

LAUGHLIN-SIMMONS & CO. OF KANSAS, INC.  
OILWELL ELEVATIONS AND LOCATIONS  
2121 W. 18TH STREET (316) 943-5351  
WICHITA, KANSAS 67203

COLO. OIL &amp; GAS CONS. COMM.

RECEIVED  
SEP 20-1976

Colorado

Baca Co

COUNTY

33

34s

41w

S

T

R

100' FNL &amp; FEL SW/4

LOCATION

Energy Reserves Group

OPERATOR

1

NO.

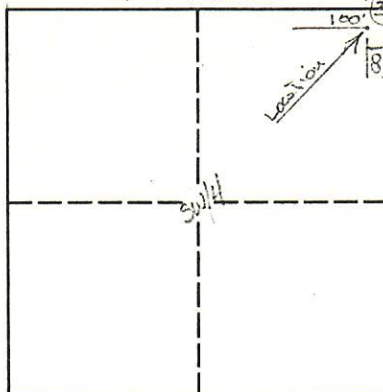
Edith M. Lewis

FARM

ELEVATION: 3566 Gr

Energy Reserves Group  
Mr. Lee McClean  
5015 N. Pennsylvania  
Oklahoma City, Oklahoma 73112

SCALE: 4" = 1 mile



Location falls on  
level stubble field.

This is alternate  
staked loc.

MINIMUM STAKING CHARGE:  
(INCLUDES GROUND ELEVATION)

EXTRA TIME &amp; MILEAGE:

ELEVATION CHARGE:

*Jim Jean*

TOTAL:

\$10.00 - Plot Prep.

\$10.00

*E. L. L. L. L.*  
L-S SURVEYORBEST COPY  
AVAILABLE