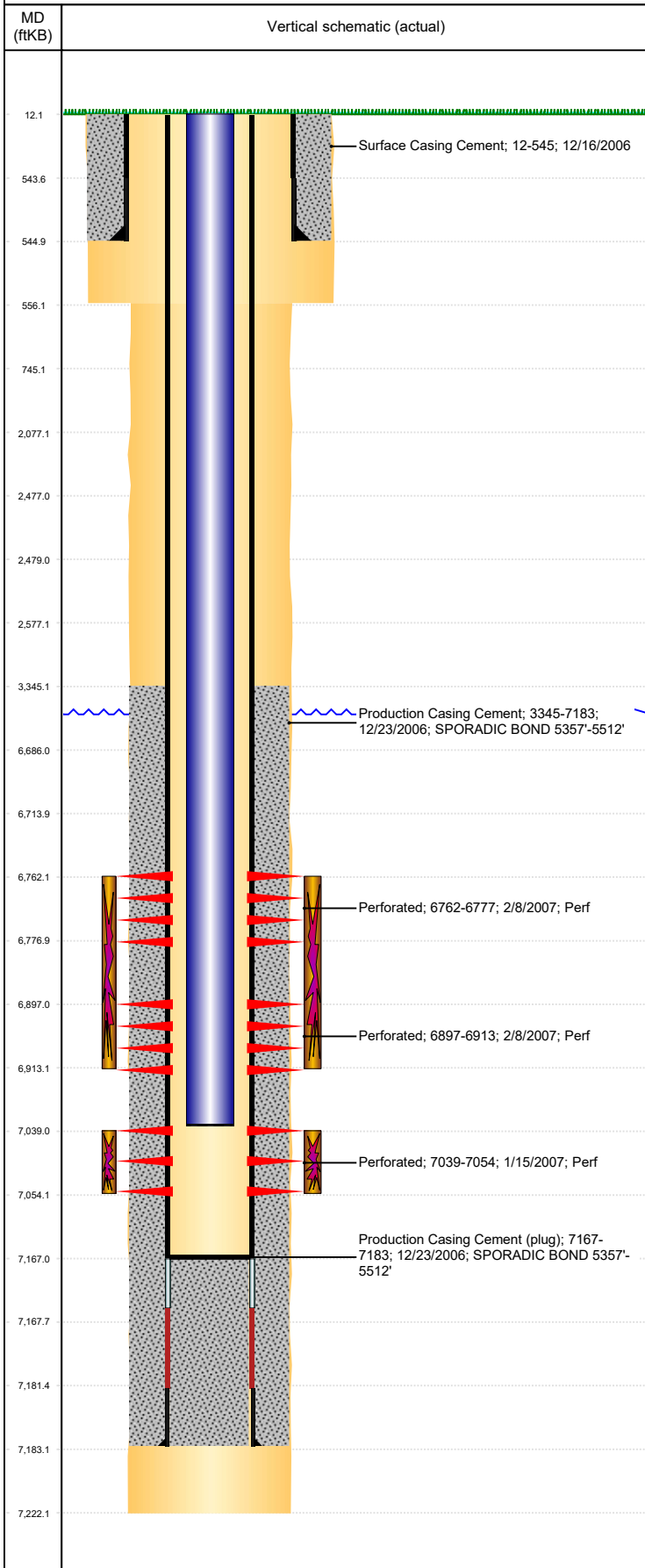




# P&A Wellbore For State

Well Name: HOWARD USX A09-11

Land, Original Hole, 8/15/2023 8:53:23 AM



Well Header									
Surface UWI 0512324496		Business Unit Rockies			Gov Auth Dist		Prod Tree Loc Land		
Orig. KB to Gnd (ft) 12.00		Original Spud Date 12/16/2006		Abandon Date		Well Sub-Status PR			High... N
Comment DISCREP: DRL RPT TD DATE 12/16/2006, STATE RPT & CSG TALL TD DATE 12/23/2006 (USED CSG TALLY); CSG DEPTHS USED 545 (DRL RPT) FOR SURF AND 7183 FOR PROD (CSG TALLY); TD DEPTH: STATE/DRL/CSG LIST 7222', DRL RPT ALSO LISTS 7207; USED 7222'									
Surface Location (Congressional)									
Qtr 3 NE	Qtr 4 SW	Section 9	Twonshp 6	Twonsh... N	Range 64	Rng E/... W	Latitude (°) 40.49933084 4	Longitude (°) -104.55709914	
Wellbore Sections									
Section Des			Hole Size (in)			Act Top (ftKB)		Act Btm (ftKB)	
SURFACE			12 1/4			12.0		556.0	
PRODUCTION			7 7/8			556.0		7,222.0	
Casing Strings									
Csg Des			Run Date		OD (in)	Wt/Len (lb/ft)	Grade	Top Depth (MD) (ftKB)	Set Depth (MD) (ftKB)
Surface			12/16/2006		8 5/8	24.00	J-55	12	545
Production Casing			12/22/2006		4 1/2	11.60	M-80	12	7183
Cement									
Des					Start Date		Top (ftKB)		Btm (ftKB)
Surface Casing Cement					12/16/2006		12.0		545.0
Production Casing Cement					12/23/2006		3,345.0		7,183.0
Zone Statuses									
Zone Name		Status Date	Status	Fluid Type	Job			Prod Method	
NIOBRARA		3/14/2007	PR		DRILLING/COMPLETION - ORIGINAL, 12/16/200...				
CODELL		3/14/2007	PR		DRILLING/COMPLETION - ORIGINAL, 12/16/200...				
Perforation Data									
Linked Zone			Explosive Type	Entered Shot Total	Top (ftKB)		Btm (ftKB)		Date
NIOBRARA, Original Hole			A	90	6,762.0		6,777.0		2/8/2007
NIOBRARA, Original Hole			B	96	6,897.0		6,913.0		2/8/2007
CODELL, Original Hole				60	7,039.0		7,054.0		1/15/2007
Stimulation Intervals									
Zone				Start Date		Top (ftKB)		Btm (ftKB)	
NIOBRARA, Original Hole				2/8/2007		6,762.0		6,913.0	
CODELL, Original Hole				2/8/2007		7,039.0		7,054.0	
Other In Hole									
Run Date		Des			Make		OD (in)	Top (ftKB)	Btm (ftKB)
Logs									
Date		Type					Depth Top (MD) (ftKB)		Btm (ftKB)
12/22/2006		COMPENSATED DENSITY					2,800		7,187.0
12/22/2006		INDUCTION					545		7,207.0
1/4/2007		CBL/CCL/GR					3,221		7,139.0
12/17/2018		GYRO					12		6,900.0
Plug Back Total Depths									
Date		Type			Com				PBTD (ftKB)
1/4/2007		FILL			DEPTH LOGGER ON CBL				7,141
12/20/2007		PLUG REMNANTS			DRILL CIPF AND CLEAN OUT TO 7167'				7,167