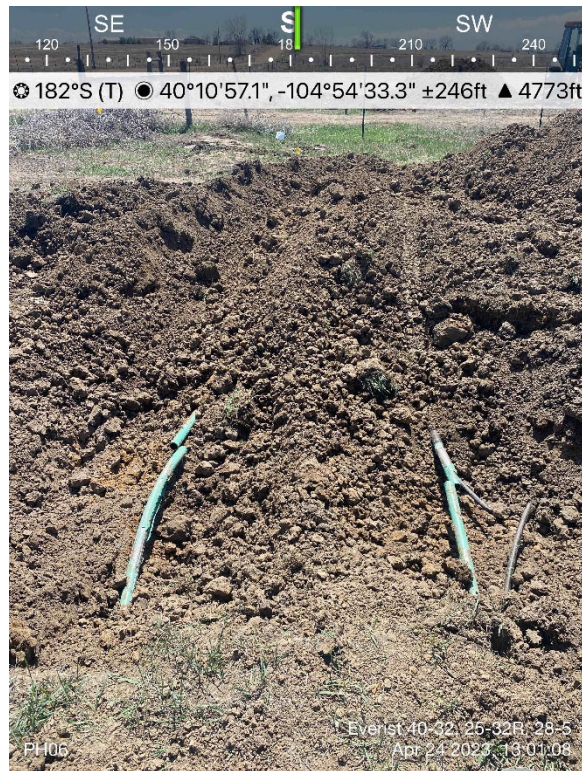
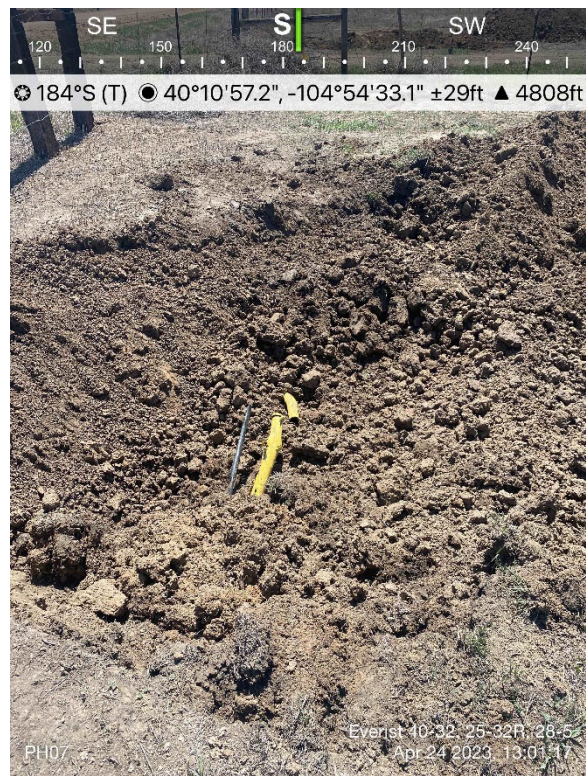


PHOTO LOG
HSR-NELSON 10-32 FLOWLINE
WELD COUNTY, COLORADO
KERR-MCGEE OIL & GAS ONSHORE, LP



Pothole 06

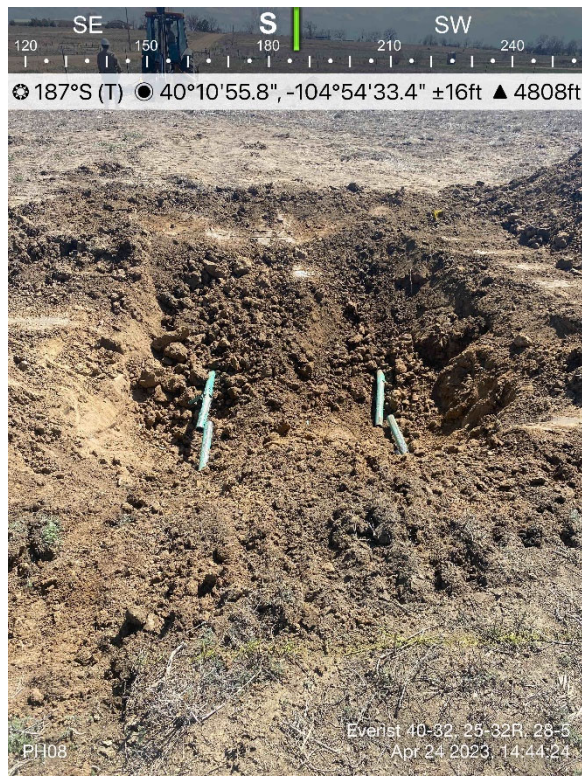


Pothole 07

PHOTO LOG
HSR-NELSON 10-32 FLOWLINE
WELD COUNTY, COLORADO
KERR-MCGEE OIL & GAS ONSHORE, LP

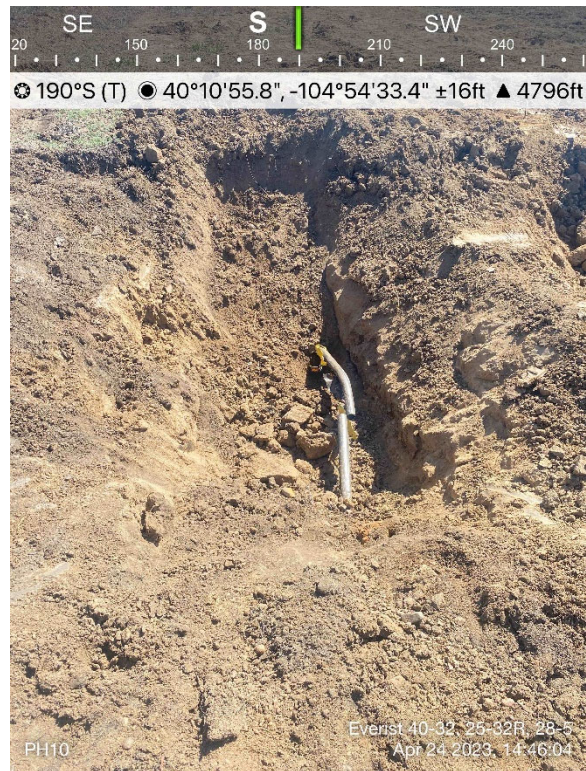


Pothole 07/08

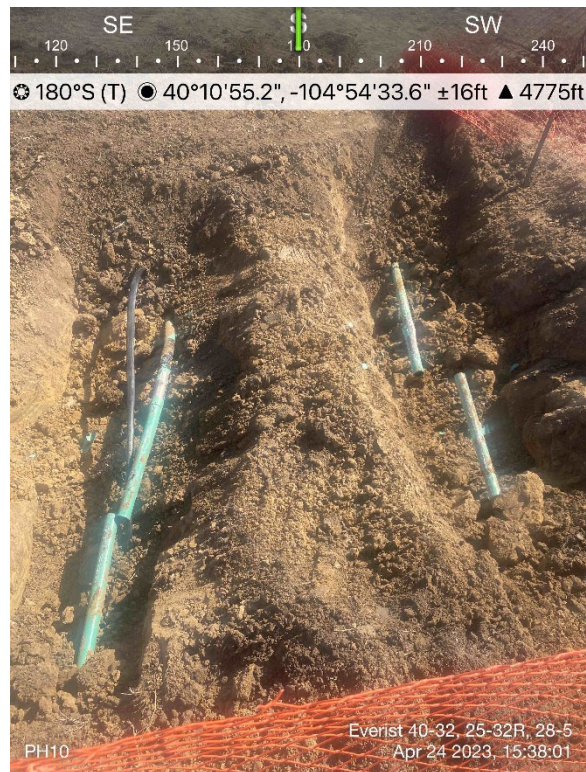


Pothole 08

PHOTO LOG
HSR-NELSON 10-32 FLOWLINE
WELD COUNTY, COLORADO
KERR-MCGEE OIL & GAS ONSHORE, LP



Pothole 10



Pothole 10

PHOTO LOG
HSR-NELSON 10-32 FLOWLINE
WELD COUNTY, COLORADO
KERR-MCGEE OIL & GAS ONSHORE, LP

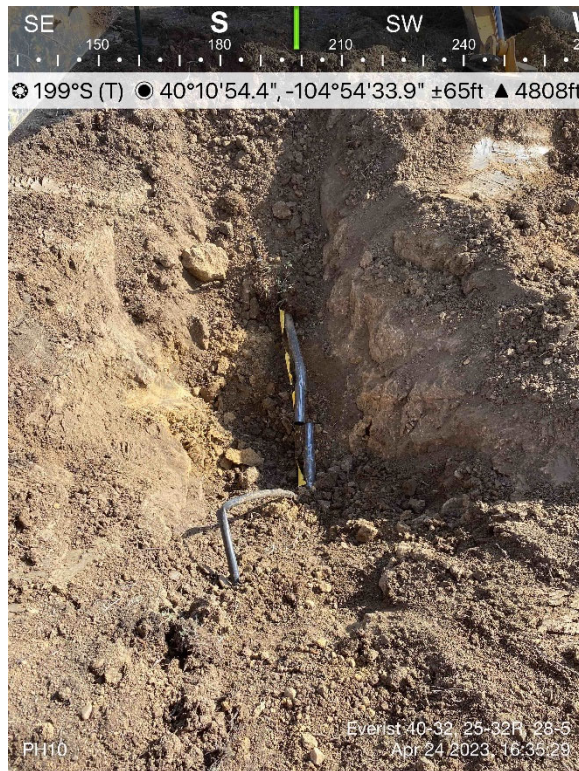


Pothole 10



Pothole 10

PHOTO LOG
HSR-NELSON 10-32 FLOWLINE
WELD COUNTY, COLORADO
KERR-MCGEE OIL & GAS ONSHORE, LP



Pothole 10



Pothole 11

PHOTO LOG
HSR-NELSON 10-32 FLOWLINE
WELD COUNTY, COLORADO
KERR-MCGEE OIL & GAS ONSHORE, LP

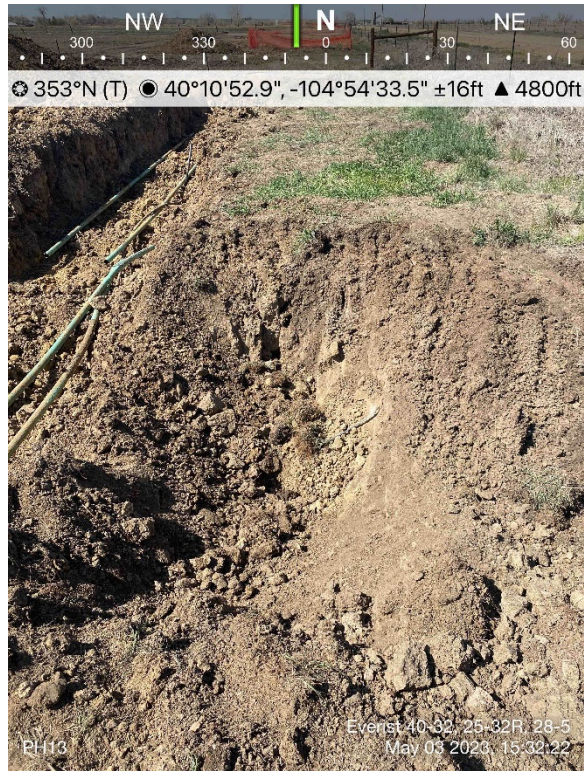


Pothole 11



FL02@5' Excavation

PHOTO LOG
HSR-NELSON 10-32 FLOWLINE
WELD COUNTY, COLORADO
KERR-MCGEE OIL & GAS ONSHORE, LP



Pothole 13



Pothole 12

PHOTO LOG
HSR-NELSON 10-32 FLOWLINE
WELD COUNTY, COLORADO
KERR-MCGEE OIL & GAS ONSHORE, LP



Wellhead Riser



Pothole 11

PHOTO LOG
HSR-NELSON 10-32 FLOWLINE
WELD COUNTY, COLORADO
KERR-MCGEE OIL & GAS ONSHORE, LP

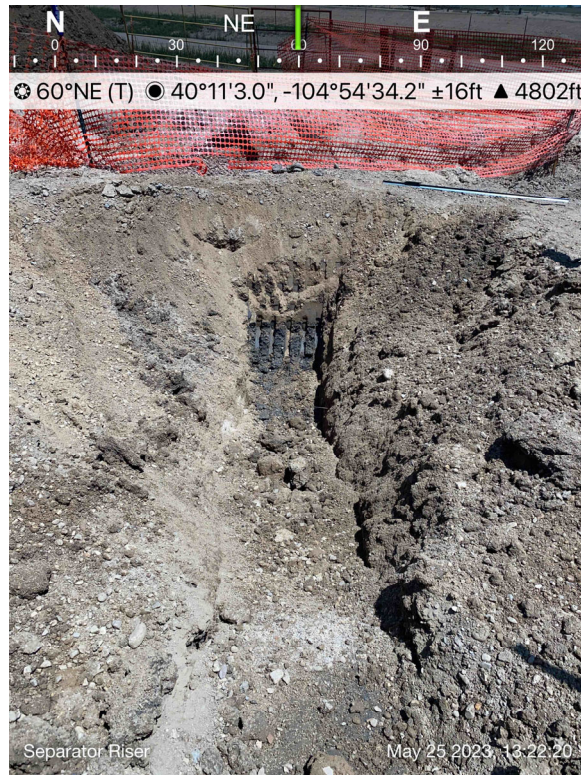


FL03



PH15

PHOTO LOG
HSR-NELSON 10-32 FLOWLINE
WELD COUNTY, COLORADO
KERR-MCGEE OIL & GAS ONSHORE, LP



Separator Riser