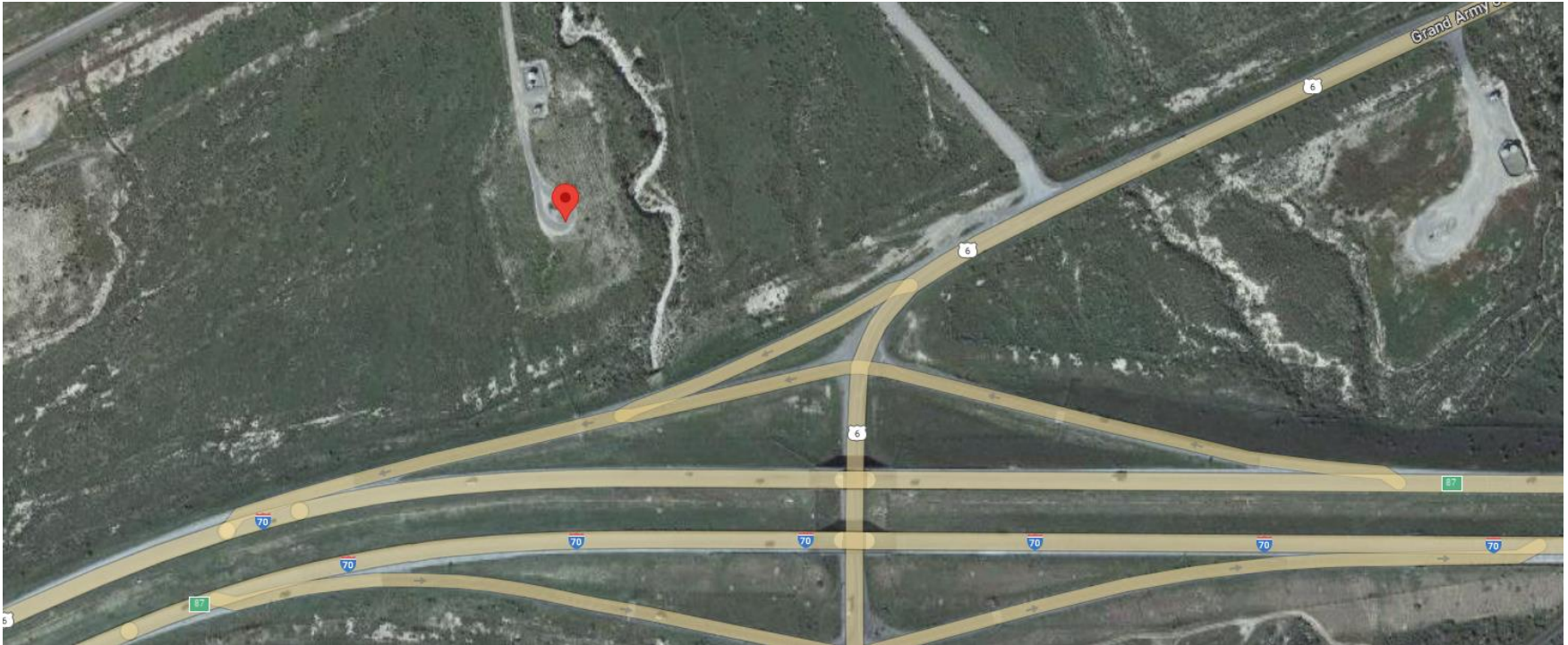


Storm Water Management and Erosion control
Location Name: TEP Rocky Mountain LLC RWF 14-13 Pad
Location # 324285



**Location Overview: Location is within High Priority/Density
Habitat areas & in close proximity to Bald Eagle Roost site.
Location is approximately 34 yards from a creek that
contributes to the Colorado River.
Section/Township/Range: 13 6S94W**



COLORADO
Energy & Carbon Management
Commission
Department of Natural Resources

Storm water Management and Erosion control
Location Name: TEP Rocky Mountain LLC RWF 14-13 Pad
Location # 324285



North West corner of location.



North East corner of location.



South West corner of location.



South East corner of location.



Storm water Management and Erosion control
Location Name: TEP Rocky Mountain LLC RWF 14-13 Pad
Location # 324285



Photo # 4446 Erosion & transport of sediment off location & into a vegetated area (S/SW edge of pad near wellhead)



Photo # 4447 Erosion & transport of sediment off location & into a vegetated area (S/SW edge of pad near wellhead)

Storm water Management and Erosion control
Location Name: TEP Rocky Mountain LLC RWF 14-13 Pad
Location # 324285



Photo # 4448 Erosion & transport of sediment off location & into a vegetated area (S/SW edge of pad near wellhead)



Photo # 4449 Erosion & transport of sediment off location & into a vegetated area (S/SW edge of pad near wellhead)

Storm water Management and Erosion control
Location Name: TEP Rocky Mountain LLC RWF 14-13 Pad
Location # 324285



Photo # 4450 Erosion & transport of sediment off location & into a vegetated area (S/SW edge of pad near wellhead)



Photo # 4464 Erosion & transport of sediment off location & into a vegetated area (E/NE area of pad behind tank battery containment)

Storm water Management and Erosion control
Location Name: TEP Rocky Mountain LLC RWF 14-13 Pad
Location # 324285



Photo # 4465 Erosion & transport of sediment off location & into a vegetated area (E/NE area of pad behind tank battery containment)



Photo # 4466 Erosion & transport of sediment off location & into a vegetated area (E/NE area of pad behind tank battery containment)

Storm water Management and Erosion control
Location Name: TEP Rocky Mountain LLC RWF 14-13 Pad
Location # 324285



Photo # 4480 Erosion & transport of sediment off location & into a vegetated area (E/NE area of pad behind tank battery containment)