

Interim Reclamation and Stormwater Inspection

August 1, 2023

Operator: KERR MCGEE OIL & GAS ONSHORE LP - #47120

Location ID: 481939

Inspection Document #: 697504773

Weld County, CO

NWSE Section 29 T5N R67W

Chris Binschus
Reclamation Specialist, COGCC



COLORADO
**Oil & Gas Conservation
Commission**

Department of Natural Resources

Inspection Photos

Location Name: PAUL NELSON/25-29HZ & CHARLENE NELSON 12-34HZ

Location ID: 481939

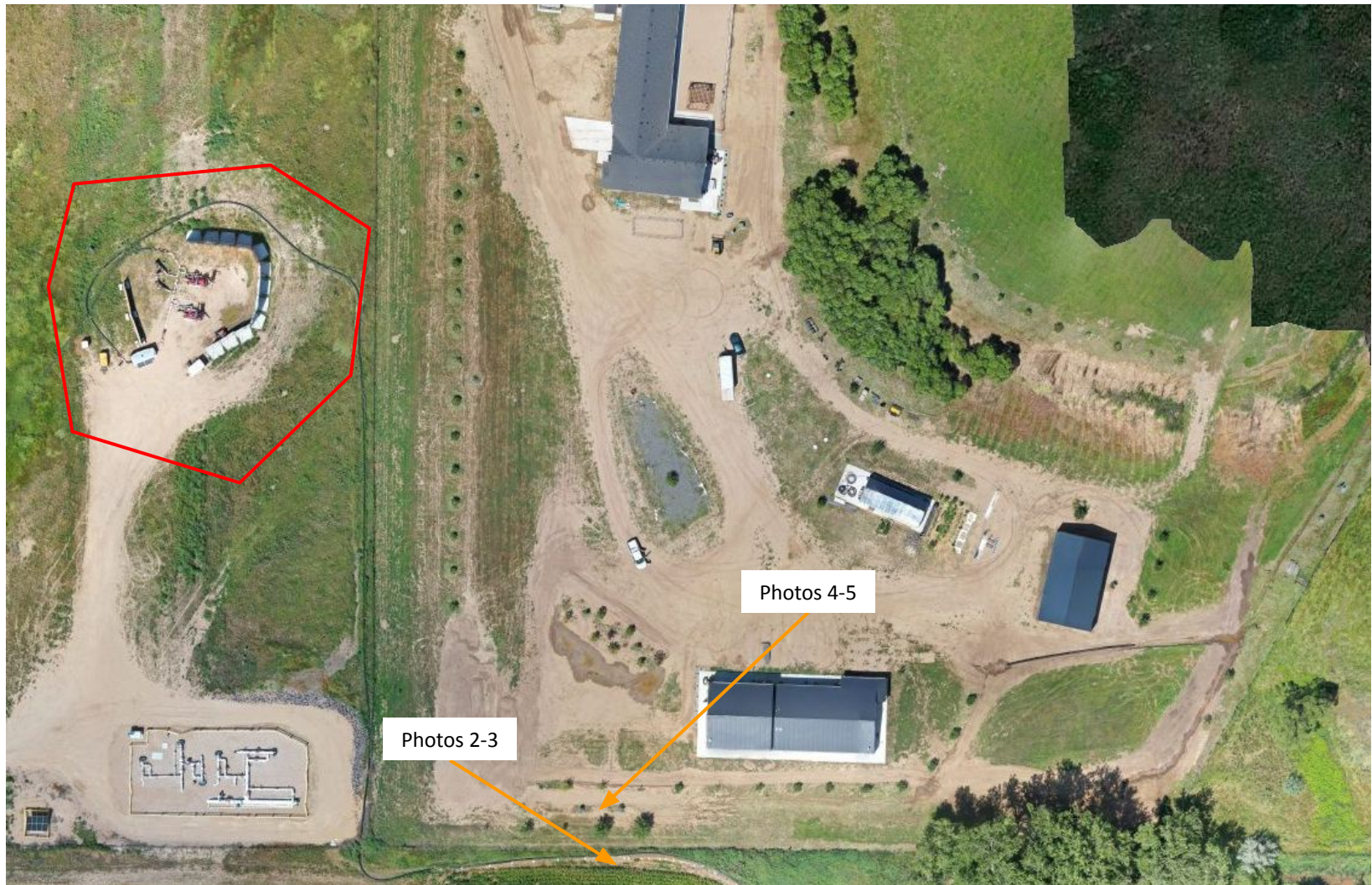


Photo 1. ECMC drone aerial imagery illustrates a water delivery system (red) used for the Paul and Charlene Nelson drilling operations. The water line (orange) travels east to the said locations. Photos 2&3 taken from the orange arrow.

Inspection Photos

Location Name: PAUL NELSON/25-29HZ &

CHARLENE NELSON 12-34HZ

Location ID: 481939



Photo 2. Photo illustrates the water line and sand bags, facing West. Sand bags were deployed by the Operator as a mitigation measure to allow irrigation tailwater to flow under the water line. Water line is no longer on sand bags.

Corn field to the left is the adjacent neighbor and the water line is on the adjacent neighboring property.



Photo 3. Photo illustrates the water line and sand bags, facing East. See comments under Photo 2.

Inspection Photos

Location Name: PAUL NELSON/25-29HZ & CHARLENE NELSON 12-34HZ

Location ID: 481939

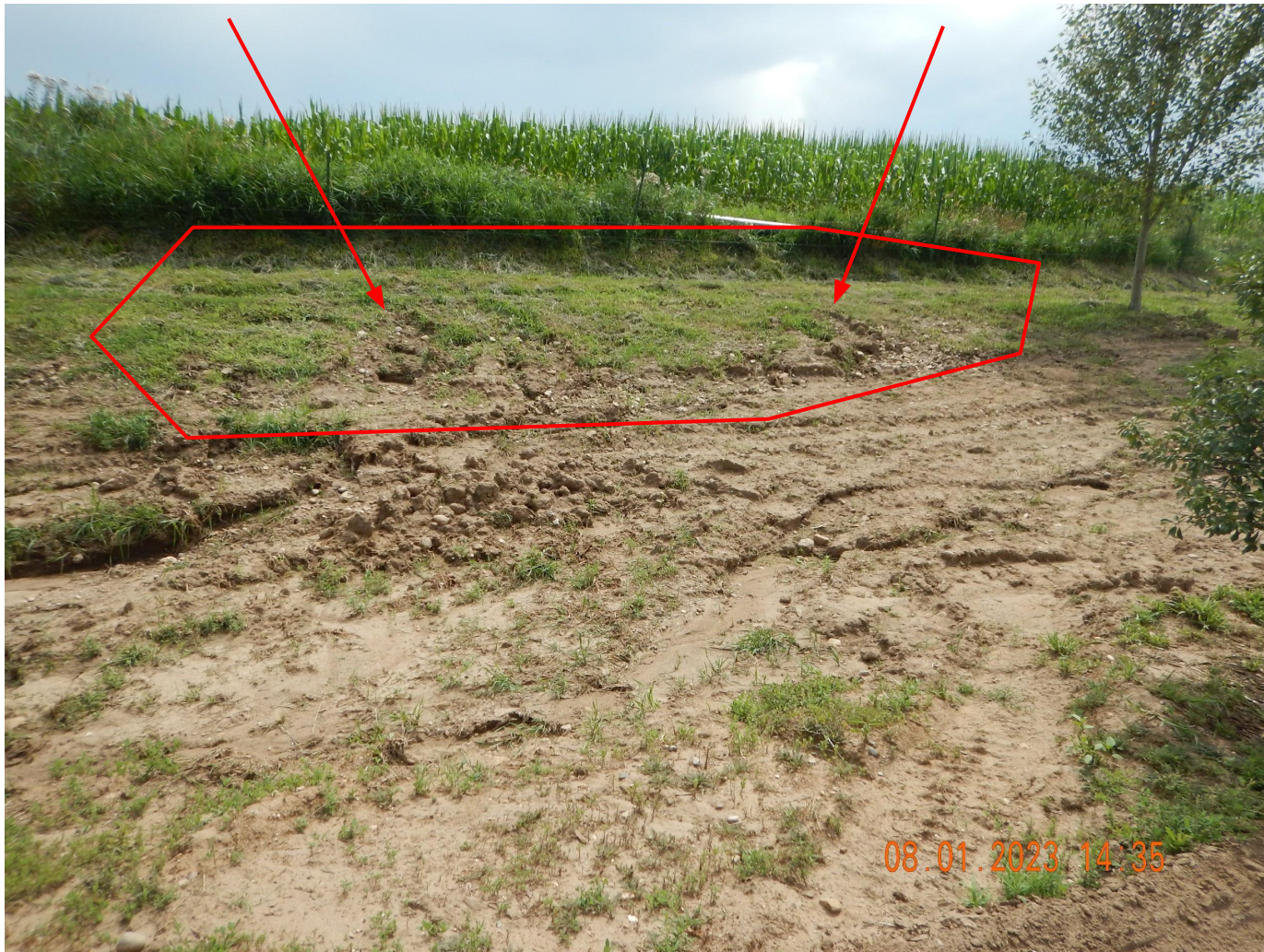


Photo 4. Photo illustrates rill/gully erosion starting within the vegetated area. The bare soil area below is from work to repair erosion.



COLORADO
Oil & Gas Conservation
Commission
Department of Natural Resources

Inspection Number: 697504773

Inspection Photos

Location Name: PAUL NELSON/25-29HZ & CHARLENE NELSON 12-34HZ

Location ID: 481939



Photo 5. Photo illustrates a disturbed area that was planned for the installation of a BMP to mitigate irrigation tailwater run-on. Pink flags were placed by the Operator and yellow flags in the background were 811 locates. The temporary soil berm was constructed by the surface owner as a mitigation measure to protect their septic system.