

**VERDAD RESOURCES LLC  
HALLET 1 N  
SECTION 35, T10N, R59W, 6th P.M.  
WELD COUNTY, COLORADO**

DATE:

DESCRIPTION:

[illegible]



**PHOTO: VIEW OF AS-DRILLED LOCATION**

**CAMERA ANGLE: NORTHERLY**



**PHOTO: VIEW OF AS-DRILLED LOCATION**

**CAMERA ANGLE: EASTERLY**

## **VERDAD RESOURCES LLC**

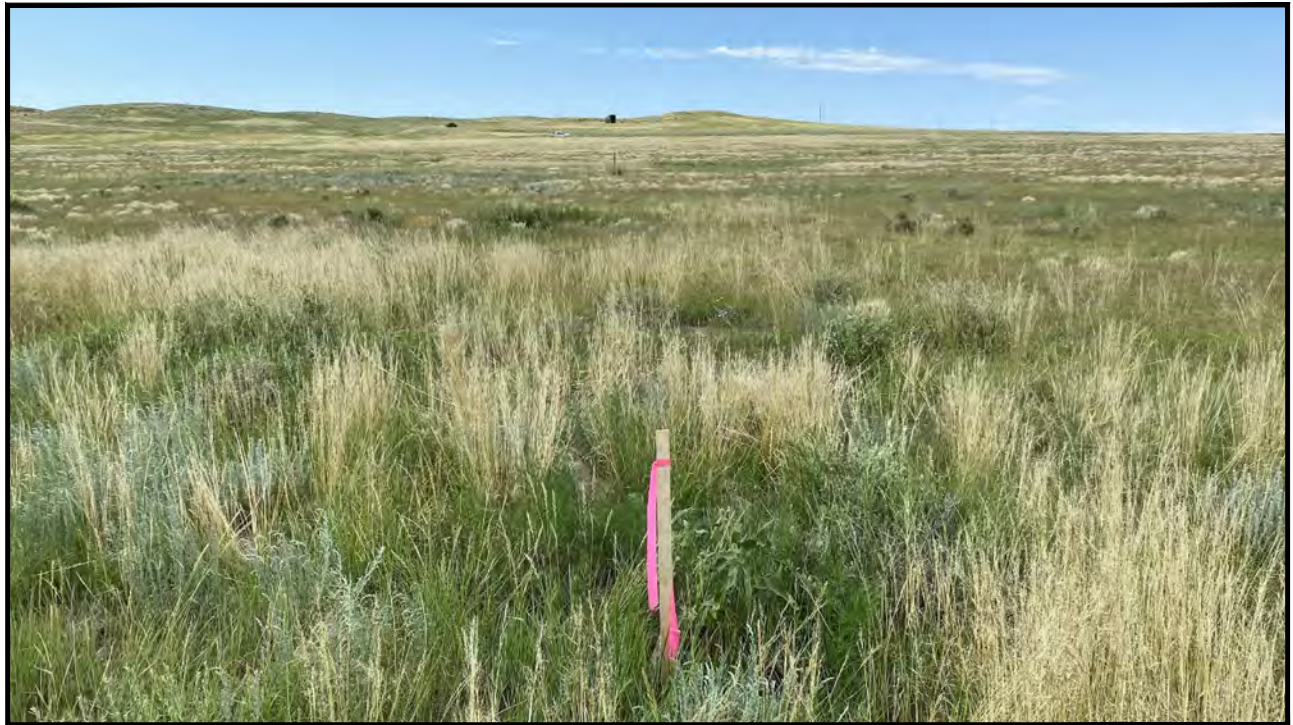
**HALLET 1 N**  
**SE 1/4 SE 1/4, SECTION 35, T10N, R59W, 6th P.M.**  
**WELD COUNTY, COLORADO**



**UELS, LLC**  
 Corporate Office \* 85 South 200 East  
 Vernal, UT 84078 \* (435) 789-1017

|                        |                 |                |  |
|------------------------|-----------------|----------------|--|
| <b>TAKEN BY</b>        | JAYSEN CHILDERS | 07-10-23       |  |
| <b>DRAWN BY</b>        | K.C.            | 07-11-23       |  |
| <b>LOCATION PHOTOS</b> |                 | <b>PHOTO 1</b> |  |





**PHOTO: VIEW OF AS-DRILLED LOCATION**

**CAMERA ANGLE: SOUTHERLY**



**PHOTO: VIEW OF AS-DRILLED LOCATION**

**CAMERA ANGLE: WESTERLY**

## **VERDAD RESOURCES LLC**

**HALLET 1 N**  
**SE 1/4 SE 1/4, SECTION 35, T10N, R59W, 6th P.M.**  
**WELD COUNTY, COLORADO**



**UELS, LLC**  
 Corporate Office \* 85 South 200 East  
 Vernal, UT 84078 \* (435) 789-1017

|                        |                 |          |                |
|------------------------|-----------------|----------|----------------|
| <b>TAKEN BY</b>        | JAYSEN CHILDERS | 07-10-23 |                |
| <b>DRAWN BY</b>        | K.C.            | 07-11-23 |                |
| <b>LOCATION PHOTOS</b> |                 |          | <b>PHOTO 2</b> |

| Well Name  | Lat: (NAD 27)            | Long: (NAD 27)             | Lat: (NAD 83)           | Long: (NAD 83)             | Section | Township | Range | Qtr./Qtr. | DATE COMPLETED | PDOP | OPERATOR        |
|------------|--------------------------|----------------------------|-------------------------|----------------------------|---------|----------|-------|-----------|----------------|------|-----------------|
| HALLET 1 N | 40°47'23.39" (40.789830) | 103°56'16.87" (103.938018) | 40°47'23.34"(40.789817) | 103°56'18.68" (103.938521) | 35      | T10N     | R59W  | SE/SE     | 7/10/2023      | 1.6  | JAYSEN CHILDERS |