

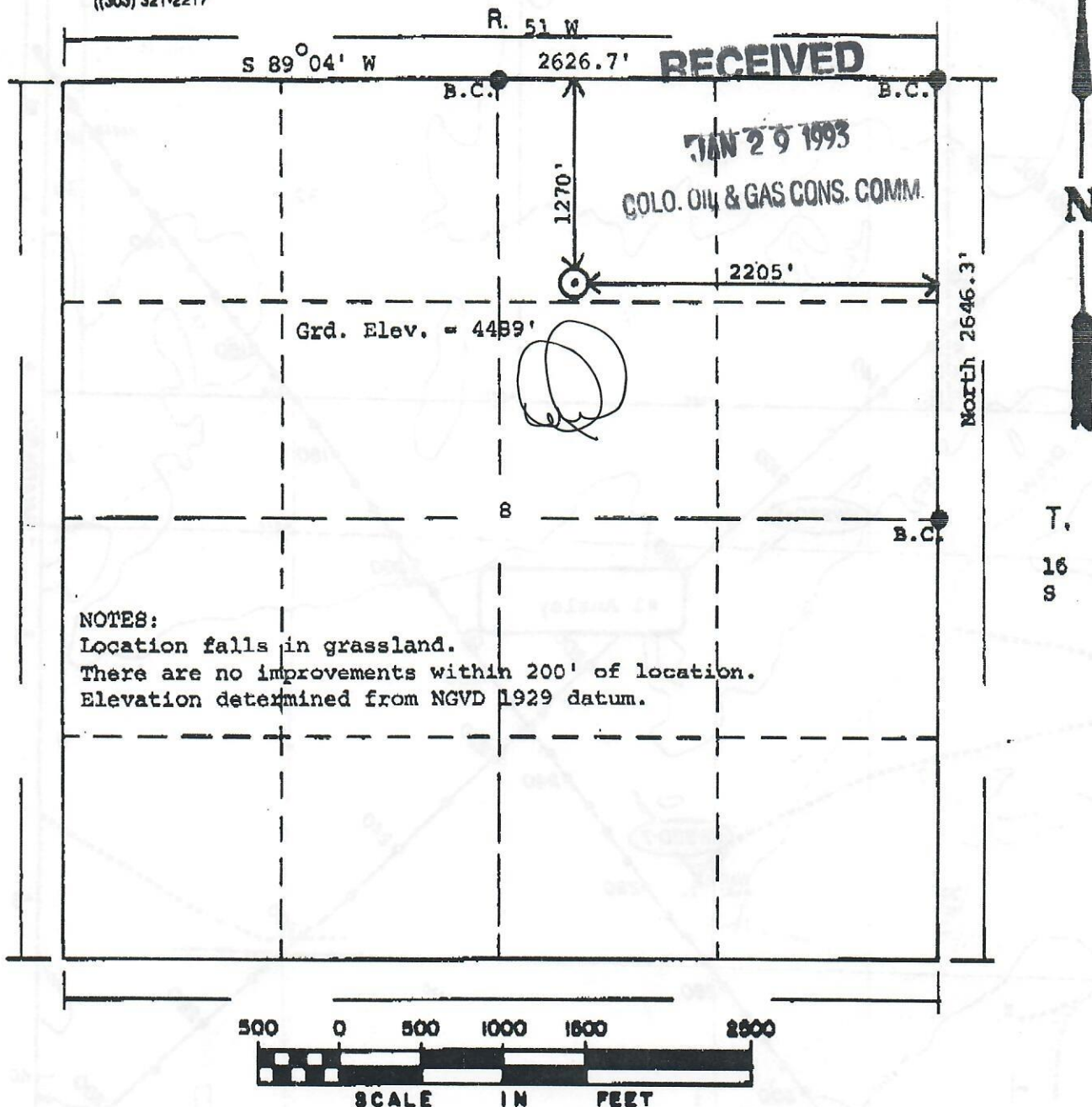
POWERS ELEVATION CO., INC.  
P.O. Box 440889  
Aurora, CO 80044  
(303) 321-2217



00524112

ALL POWERS ELEVATION CO., INC.  
elevations originate from  
accepted U.S. Benchmarks

#981 P02



Powers Elevation Co., Inc. of Denver, Colorado has in accordance  
with a request from Pat Ungleich for Mull Drilling Co., Inc.  
determined the location of #1 Ansley  
to be 1270' FNL & 2205' FEL  
Range 51 West of the Sixth Principal Meridian,  
Cheyenne County, Colorado

Section 8 , Township 16S  
Meridian,

I hereby certify that this plot is an accurate  
representation of a correct  
location of #1 Ansley

Date: January 27, 1993

Licensed Land Surveyor  
State of Colorado





