

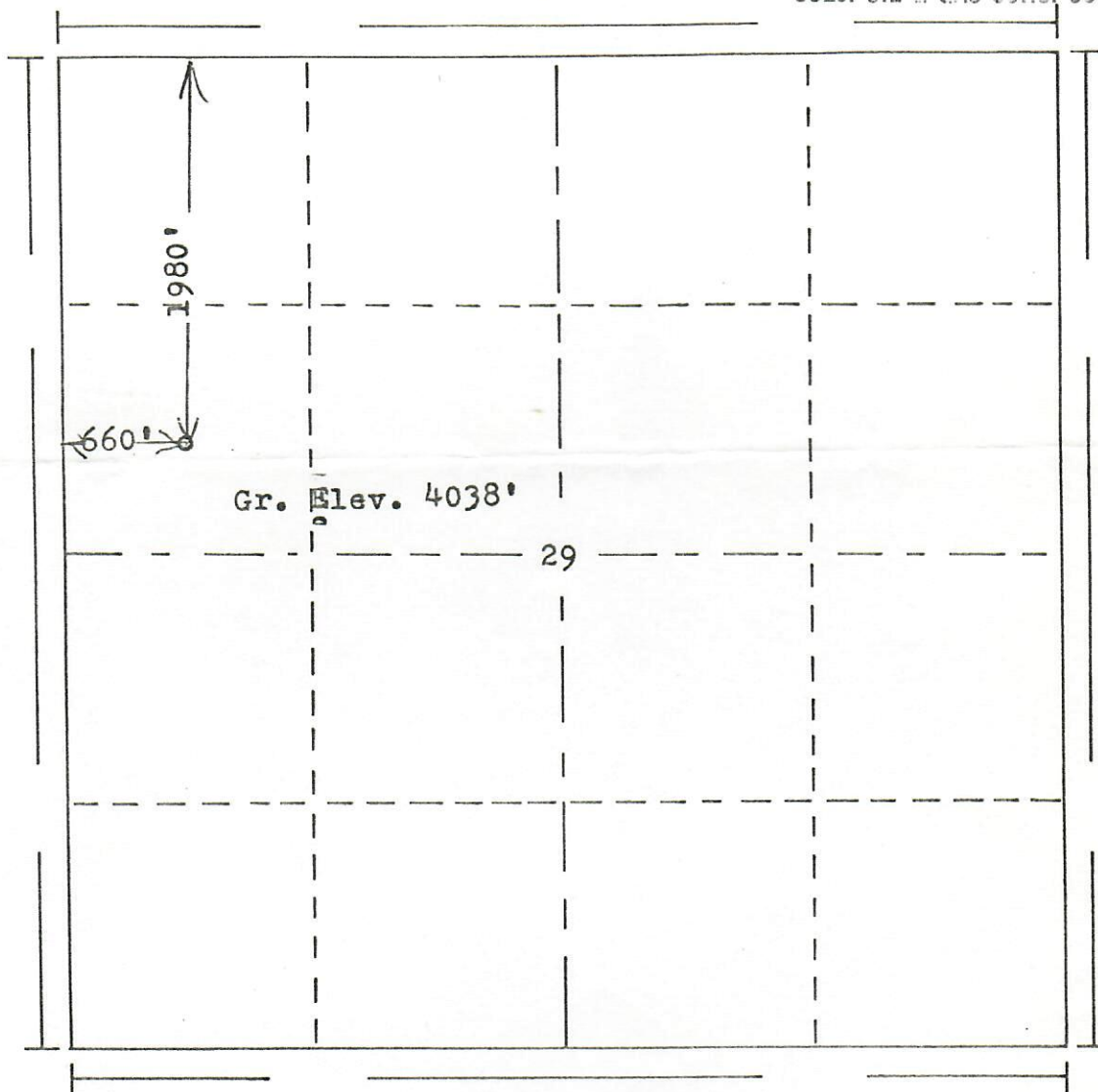


RECEIVED

DEC 27 1979

R. 52W

COLO. OIL & GAS CONS. COMM.

T.
7
N

Scale... 1" = 1000'

Powers Elevation of Denver, Colorado
has in accordance with a request from Mr. Gear
for Miller-Christensen et al
determined the location of No.1-B State
to be CSW NW Section 29 Township 7N
Range 52W of the 6th Principal Meridian
Logan County, Colorado



00220196

I hereby certify that this plat is an
accurate representation of a correct
survey showing the location of

Date: 11-9-79

Billy A. Homan
Licensed Land Surveyor No. 2853
State of Colorado