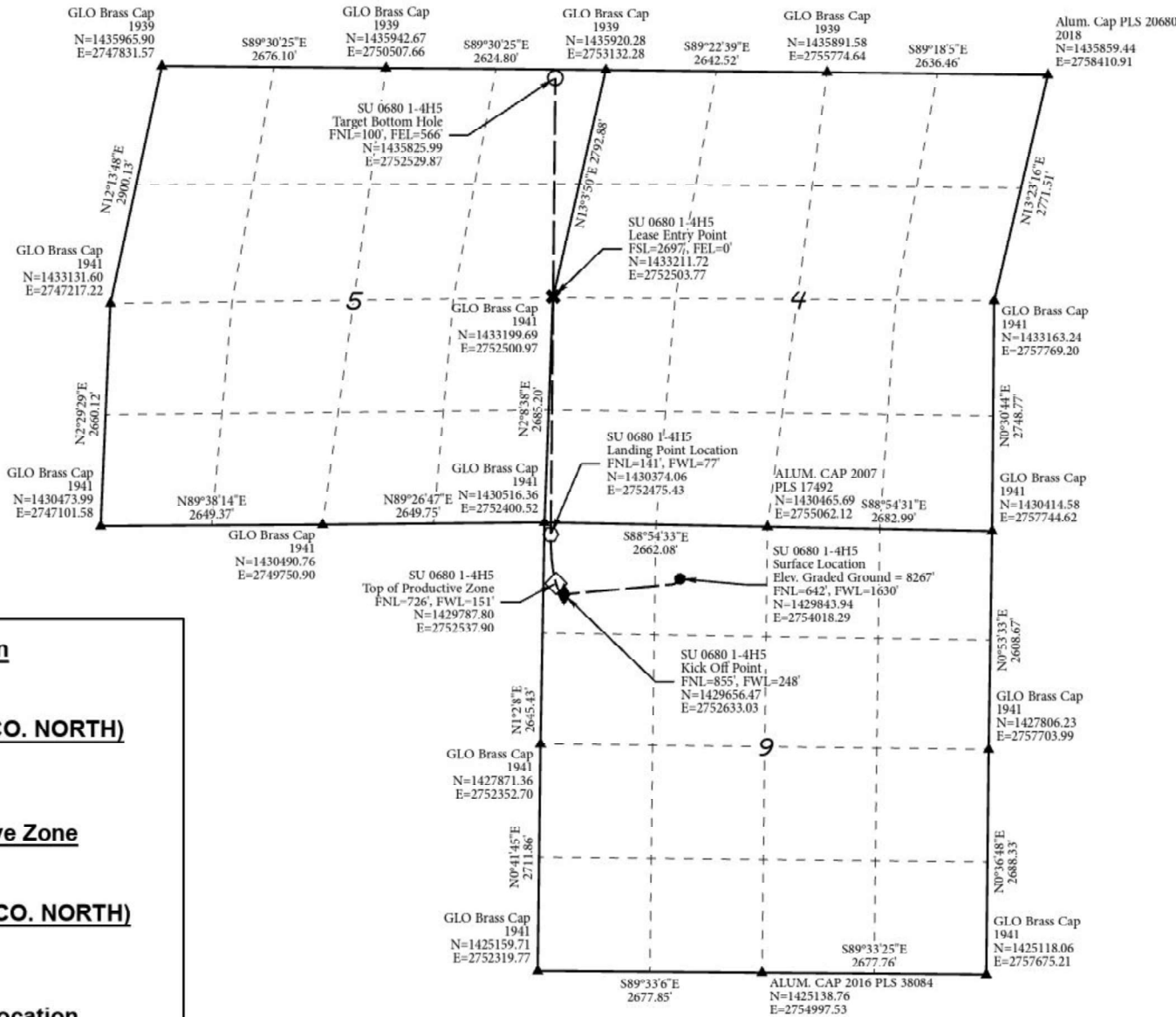


T.6N, R.80W, 6th P.M.



SU 0680 1-4H5

As shown in the NE1/4NW1/4 of Section 9,
T6N, R80W, 6th P.M.
Jackson County, Colorado



NAD 83 Surface Location

Lat=40.509954°N
Long=106.384654°W
STATE PLANE NAD 83(CO. NORTH)
N=1429843.94
E=2754018.29

NAD 83 Top of Productive Zone

Lat=40.509760°N
Long=106.389976°W
STATE PLANE NAD 83 (CO. NORTH)
N=1429787.80
E=2752537.90

NAD 83 Landing Point Location

Lat=40.511367°N
Long=106.390222°W
STATE PLANE NAD 83 (CO. NORTH)
N=1430374.06
E=2752475.43

NAD 83 Target Bottom Hole

Lat=40.526333°N
Long=106.390223°W
STATE PLANE NAD 83 (CO. NORTH)
N=1435825.99
E=2752529.87

PDOP=1.294

Top of Productive Zone

Niobrara = 7300' TVD

THIS IS TO CERTIFY THAT THE ABOVE PLAT WAS PREPARED FROM
FIELD NOTES OF ACTUAL SURVEYS MADE BY ME OR UNDER MY
SUPERVISION AND THAT THE SAME ARE TRUE AND CORRECT TO
THE BEST OF MY KNOWLEDGE AND BELIEF.

RANDALL R. MILLER
COLORADO PLS NO. 38084

BASIS OF ELEVATION

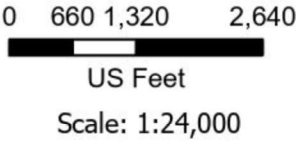
NAVD88 Computed using GEOID12B
as measured using a combination of
Static and Kinematic GPS based on
an OPUS Solution Report.

BASIS OF BEARINGS

US STATE PLANE 1983
CO NORTH 0501 GRID
EPSG: 2231

Legend

- Surface Location
- ◆ Kick Off Point
- ◇ Top of Productive Zone
- Landing Point Location
- ✱ Lease Entry Point
- Target Bottom Hole
- ▲ Found Corners



NORTH PARK ENGINEERING & CONSULTING, INC.

P.O. BOX 395
WALDEN, CO 80480
(970) 723-3725

DATE OF FIELD WORK:09/29/2022	DRAWING COMPLETION: 7/3/2023
SURVEYED BY: CURTIS UTLEY	DRAWN BY: ALEX LAWTON
CHECKED BY: RANDALL MILLER	