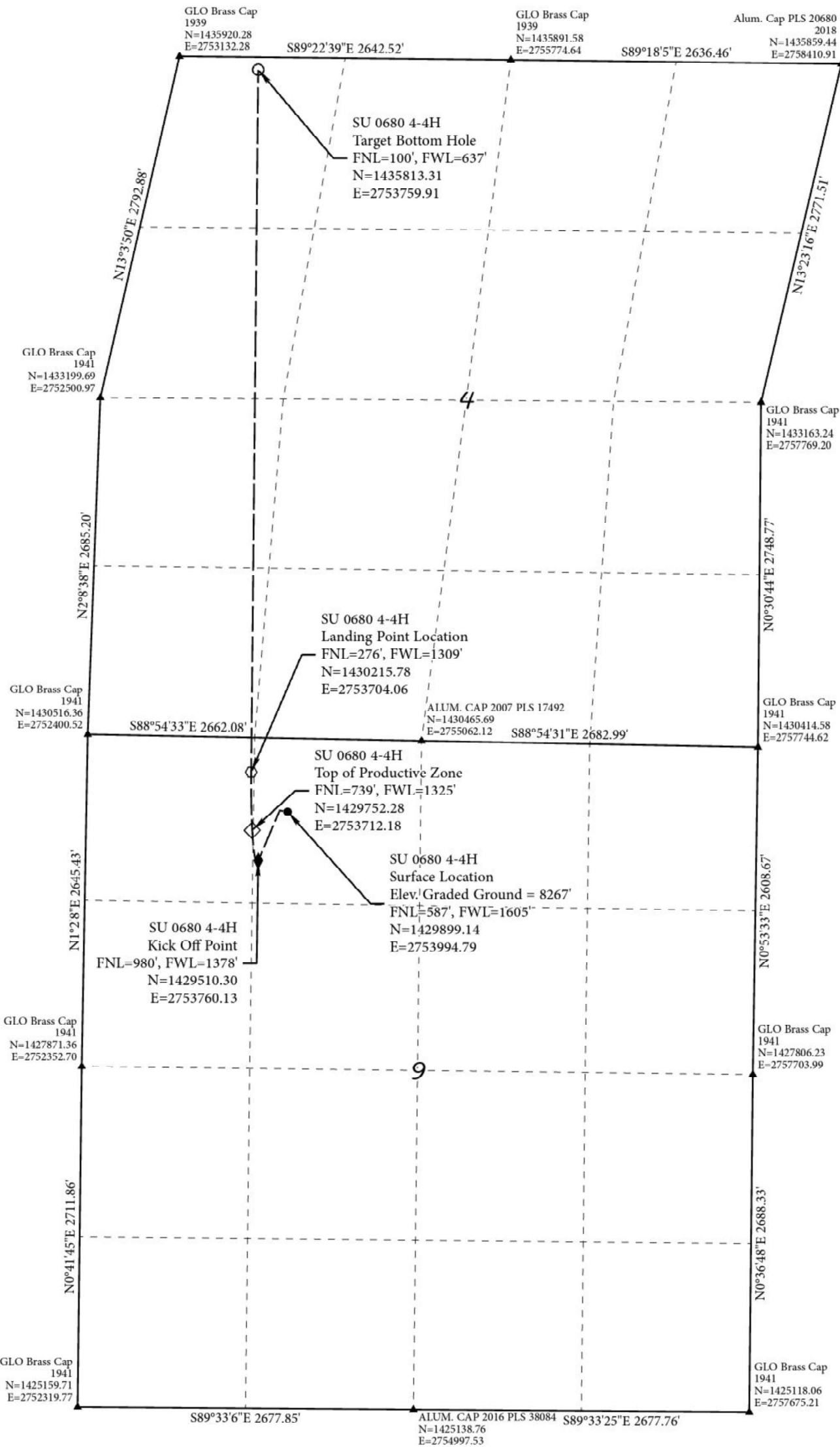


T.6N, R.80W, 6<sup>th</sup> P.M.



SU 0680 4-4H

As shown in the NE1/4NW1/4 of Section 9,  
T6N, R80W, 6<sup>th</sup> P.M.  
Jackson County, Colorado



NAD 83 Surface Location

Lat=40.510105°N  
Long=106.384741°W  
**STATE PLANE NAD 83(CO. NORTH)**  
N=1429899.14  
E=2753994.79

NAD 83 Top of Productive Zone

Lat=40.509694°N  
Long=106.385752°W  
**STATE PLANE NAD 83(CO. NORTH)**  
N=1429752.28  
E=2753712.18

NAD 83 Landing Point Location

Lat=40.510966°N  
Long=106.385798°W  
**STATE PLANE NAD 83 (CO. NORTH)**  
N=1430215.78  
E=2753704.06

NAD 83 Target Bottom Hole

Lat=40.526332°N  
Long=106.385798°W  
**STATE PLANE NAD 83 (CO. NORTH)**  
N=1435813.31  
E=2753759.91

PDOP=1.745

Top of Productive Zone

Niobrara = 7300' TVD

THIS IS TO CERTIFY THAT THE ABOVE PLAT WAS PREPARED FROM  
FIELD NOTES OF ACTUAL SURVEYS MADE BY ME OR UNDER MY  
SUPERVISION AND THAT THE SAME ARE TRUE AND CORRECT TO  
THE BEST OF MY KNOWLEDGE AND BELIEF.

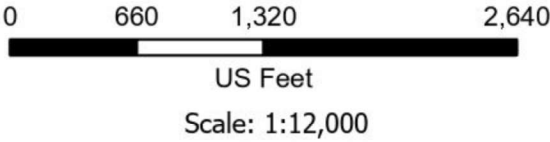
RANDALL R. MILLER  
COLORADO PLS NO. 38084

**BASIS OF BEARINGS**  
US STATE PLANE 1983  
CO NORTH 0501 GRID  
EPSG: 2231

**BASIS OF ELEVATION**  
NAVD88 Computed using GEOID12B  
as measured using a combination of  
Static and Kinematic GPS based on  
an OPUS Solution Report.

Legend

- Surface Location
- ◆ Kick Off Point
- ◇ Top of Productive Zone
- Landing Point Location
- Target Bottom Hole
- ▲ Found Corners



NORTH PARK ENGINEERING & CONSULTING, INC.

P.O. BOX 395  
WALDEN, CO 80480  
(970) 723-3725

DATE OF FIELD WORK: 09/29/2022	DRAWING COMPLETION: 7/3/2023
SURVEYED BY: CURTIS UTLEY	DRAWN BY: ALEX LAWTON
CHECKED BY: RANDALL MILLER	