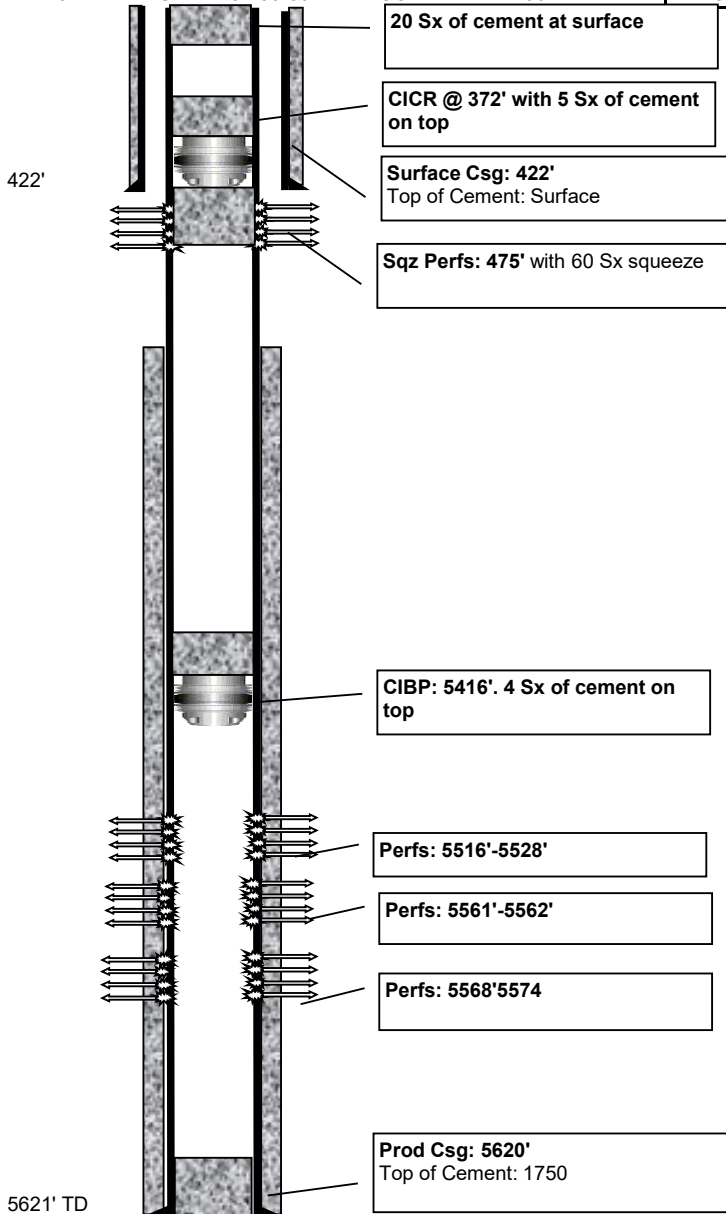


Schenk 1

SI

Today - 7/7/2023

API #	Lease ID	Permit #	County	KB	GL	Current production			Sec N/S	Sec E/W	Sec
05-017-07421		94-419	Cheyenne	4375'	4366'	0.0 BOPD	0 MCFD	38 BWPD	1980' S	600' W	5-13S-44W
Pumping Unit		Motor	State	TD	PBTD	Initial production			Lease N/S	Lease E/W	Blk
KB = 9'		LUF M228-200-86	CO	5621'		74 BOPD	TSTM	18 BWPD			



Perforations

Top	Bottom	SPF	Stimulation	OPEN?
5516'	5528'	1994	500 gal 15% MCA	YES
5561'	5562'		250 Gal 15%	YES
5568'	5574'		250 Gal 15%	YES

Total = 19'

Casing

Depth	Size	Wgt (#)	Grade	Description
422'	8-5/8"	24		
5620'	5-1/2"	15.5		DV tool

Cement

Casing	Sacks	TOC	Description
8-5/8"	250	surface	150 sx lite; 100sx H
5-1/2"	240	1750, 5000	lower: 100 sx H; upper: 90sx lite,

Plugs

Description	Sx	Length	Top	Bottom
Surface	20'	100'	0'	100'
Balanced	5'	25'	397'	422'
CICR		5'	372'	377'
Squeeze		60		
Balanced	4	20'	5419'	5439'
CICR		5'	5439'	5444'

5621' TD

Job Type	Date	Summary
Permit		Permit #94-419
Drill	4/5/1994	Spud Date 4/5/1994; Date TD Reached 4/17/1994
Perforate		Perforated interval 5516-5528; 26 total holes at size .32 Perforated interval 5561-5562; 2 total holes at size .32 Perforated interval 5568-5574; 13 total holes at size .32
Install rod pump	5/27/1994	