

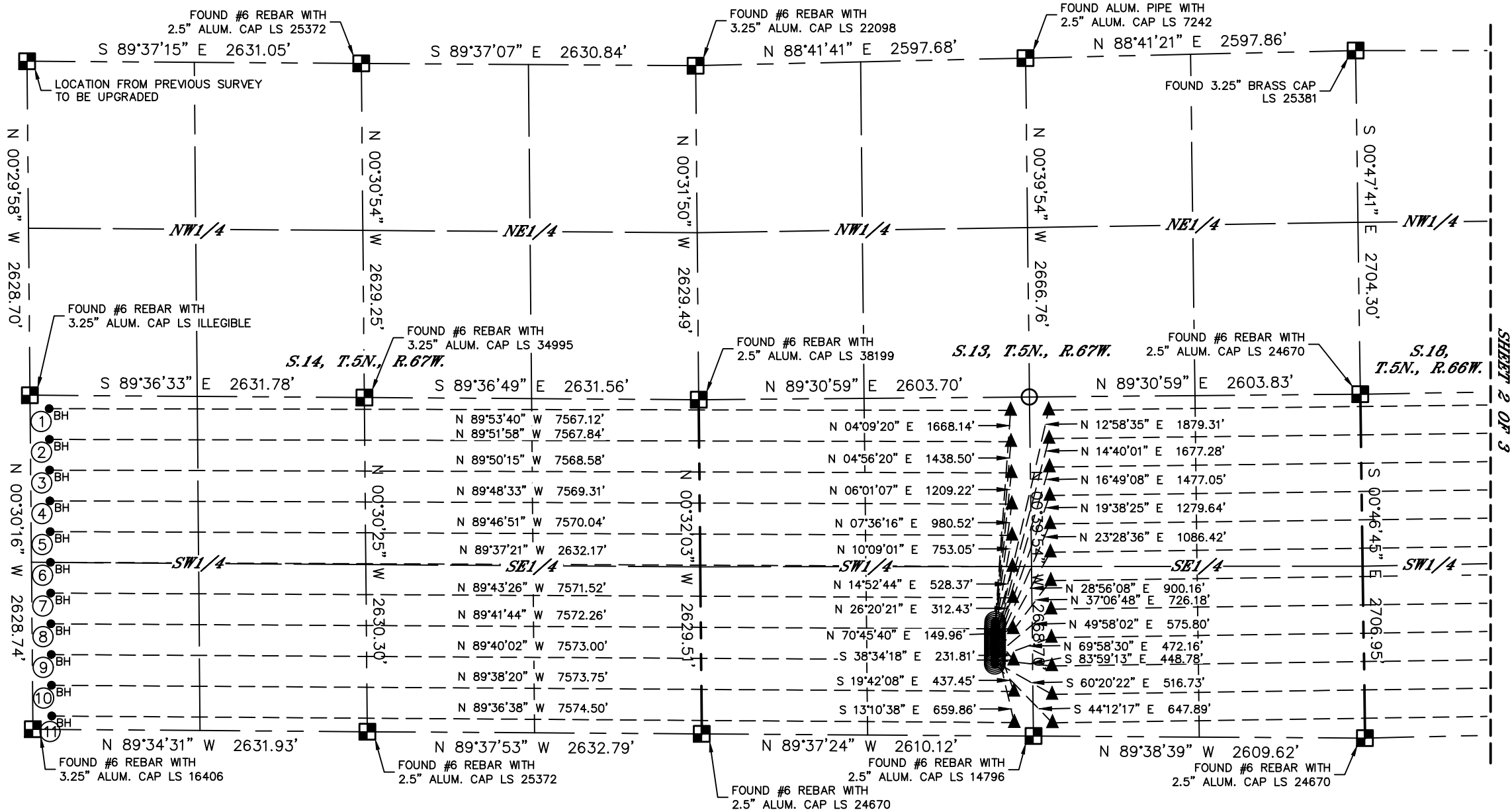


Lat40°, Inc. 6250 W. 10th Street, Unit 2, Greeley, CO 970-515-5294

DIRECTIONAL WELL PLAT
DENALI STATE 5N67W13 1-23 PAD
PDC ENERGY

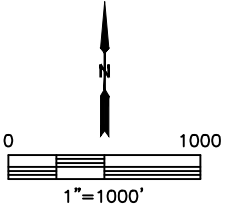
THIS MAP DOES NOT REPRESENT A BOUNDARY SURVEY

Q-Q: SESW
SECTION: 13
TOWNSHIP: 5N
RANGE: 67W
6TH. P.M.
WELD COUNTY, CO



- LEGEND
- = ALIQUOT MONUMENT AS DESCRIBED
 - = CALCULATED POSITION
 - = SURFACE HOLE LOCATION (SHL)
 - ▲ = ENTRY POINT LOCATION (EP)
 - ◆ = TOP OF PRODUCTIVE ZONE (PZONE)
 - = BOTTOM HOLE LOCATION (BHL)
 - ⊙ = EXISTING WELL
 - ⊙ = ABANDONED WELL

| # | WELL NAME | BHL FOOTAGE | | | | BHL LAT ° | BHL LONG ° | BHL S-T-R |
|----|-------------------|-------------|-----|-----|-----|-----------|------------|-----------|
| 1 | DENALI STATE 01NA | 2523 | FSL | 150 | FWL | 40.39933 | -104.86930 | 14-5-67 |
| 2 | DENALI STATE 02N | 2282 | FSL | 150 | FWL | 40.39867 | -104.86930 | 14-5-67 |
| 3 | DENALI STATE 03N | 2040 | FSL | 150 | FWL | 40.39800 | -104.86930 | 14-5-67 |
| 4 | DENALI STATE 04C | 1798 | FSL | 150 | FWL | 40.39734 | -104.86929 | 14-5-67 |
| 5 | DENALI STATE 05N | 1556 | FSL | 150 | FWL | 40.39667 | -104.86929 | 14-5-67 |
| 6 | DENALI STATE 06N | 1314 | FSL | 150 | FWL | 40.39601 | -104.86929 | 14-5-67 |
| 7 | DENALI STATE 07N | 1072 | FSL | 150 | FWL | 40.39535 | -104.86929 | 14-5-67 |
| 8 | DENALI STATE 08NA | 831 | FSL | 150 | FWL | 40.39468 | -104.86929 | 14-5-67 |
| 9 | DENALI STATE 09N | 589 | FSL | 150 | FWL | 40.39402 | -104.86929 | 14-5-67 |
| 10 | DENALI STATE 10C | 347 | FSL | 150 | FWL | 40.39336 | -104.86928 | 14-5-67 |
| 11 | DENALI STATE 11N | 105 | FSL | 150 | FWL | 40.39269 | -104.86928 | 14-5-67 |

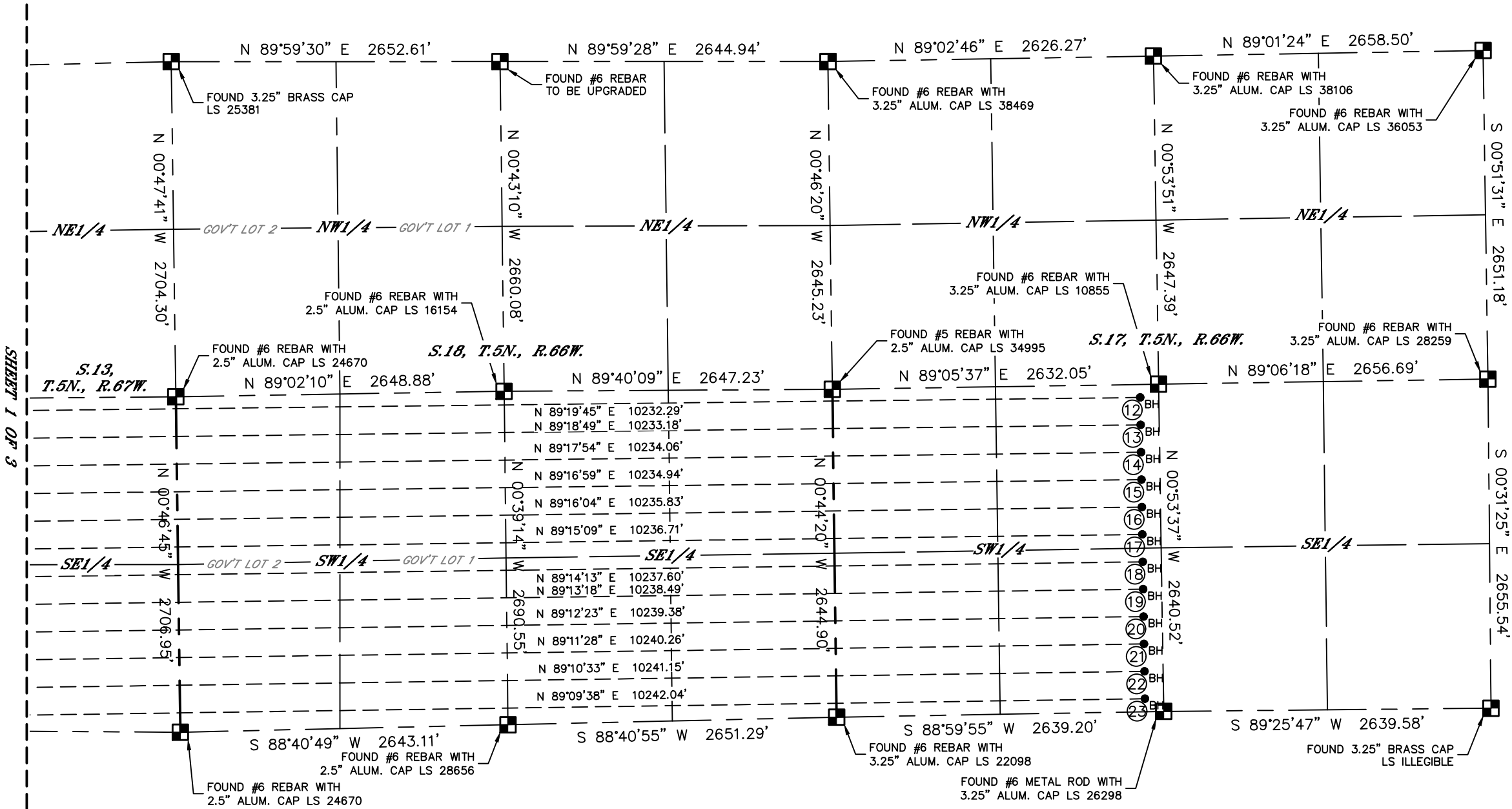




Lat40°, Inc. 6250 W. 10th Street, Unit 2, Greeley, CO 970-515-5294

DIRECTIONAL WELL PLAT
DENALI STATE 5N67W13 1-23 PAD
PDC ENERGY

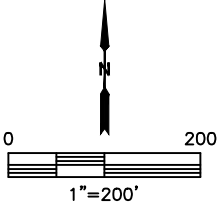
Q-Q: SESW
SECTION: 13
TOWNSHIP: 5N
RANGE: 67W
6TH. P.M.
WELD COUNTY, CO



SHEET 1 OF 3

- LEGEND
- = ALIQUOT MONUMENT AS DESCRIBED
 - = CALCULATED POSITION
 - = SURFACE HOLE LOCATION (SHL)
 - ▲ = ENTRY POINT LOCATION (EP)
 - ◆ = TOP OF PRODUCTIVE ZONE (PZONE)
 - _{BH} = BOTTOM HOLE LOCATION (BHL)
 - ⊙ = EXISTING WELL
 - ⊙ = ABANDONED WELL

| # | WELL NAME | BHL FOOTAGE | | | BHL LAT ° | BHL LONG ° | BHL S-T-R |
|----|-------------------|-------------|-----|----------|-----------|------------|-----------|
| 12 | DENALI STATE 12N | 2536 | FSL | 2482 FWL | 40.39926 | -104.80433 | 17-5-66 |
| 13 | DENALI STATE 13N | 2315 | FSL | 2483 FWL | 40.39865 | -104.80432 | 17-5-66 |
| 14 | DENALI STATE 14NA | 2094 | FSL | 2484 FWL | 40.39804 | -104.80432 | 17-5-66 |
| 15 | DENALI STATE 15N | 1873 | FSL | 2484 FWL | 40.39744 | -104.80431 | 17-5-66 |
| 16 | DENALI STATE 16N | 1652 | FSL | 2485 FWL | 40.39683 | -104.80431 | 17-5-66 |
| 17 | DENALI STATE 17C | 1431 | FSL | 2485 FWL | 40.39622 | -104.80430 | 17-5-66 |
| 18 | DENALI STATE 18N | 1210 | FSL | 2486 FWL | 40.39562 | -104.80429 | 17-5-66 |
| 19 | DENALI STATE 19N | 989 | FSL | 2487 FWL | 40.39501 | -104.80429 | 17-5-66 |
| 20 | DENALI STATE 20NA | 768 | FSL | 2487 FWL | 40.39440 | -104.80428 | 17-5-66 |
| 21 | DENALI STATE 21N | 547 | FSL | 2488 FWL | 40.39380 | -104.80428 | 17-5-66 |
| 22 | DENALI STATE 22N | 326 | FSL | 2488 FWL | 40.39319 | -104.80427 | 17-5-66 |
| 23 | DENALI STATE 23N | 105 | FSL | 2489 FWL | 40.39258 | -104.80426 | 17-5-66 |

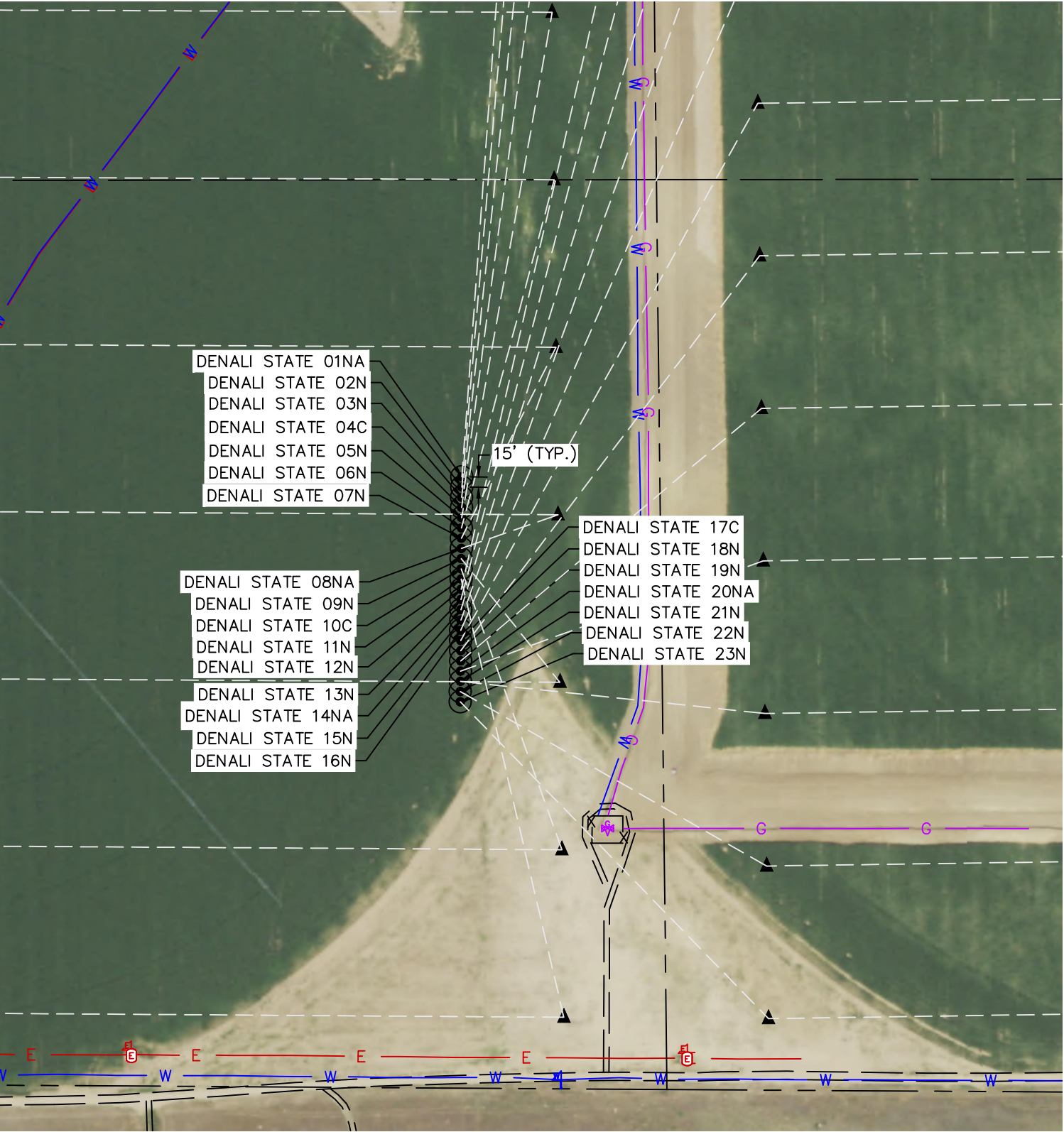




Lat40°, Inc. 6250 W. 10th Street, Unit 2, Greeley, CO 970-515-5294

DIRECTIONAL WELL PLAT
DENALI STATE 5N67W13 1-23 PAD
PDC ENERGY

Q-Q: SESW
SECTION: 13
TOWNSHIP: 5N
RANGE: 67W
6TH. P.M.
WELD COUNTY, CO



| # | WELL NAME | SHL FOOTAGE | | | SHL LAT ° | SHL LONG ° | SHL PDOP | SHL ELEV (FT.) | SHL 1/4/1/4 | SHL S-T-R | |
|----|-------------------|-------------|-----|------|-----------|------------|------------|----------------|-------------|-----------|---------|
| 1 | DENALI STATE 01NA | 897 | FSL | 2318 | FWL | 40.39458 | -104.84261 | 1.6 | 4930 | SESW | 13-5-67 |
| 2 | DENALI STATE 02N | 881 | FSL | 2317 | FWL | 40.39454 | -104.84262 | 1.7 | 4930 | SESW | 13-5-67 |
| 3 | DENALI STATE 03N | 866 | FSL | 2317 | FWL | 40.39449 | -104.84262 | 1.4 | 4930 | SESW | 13-5-67 |
| 4 | DENALI STATE 04C | 851 | FSL | 2317 | FWL | 40.39445 | -104.84262 | 1.5 | 4931 | SESW | 13-5-67 |
| 5 | DENALI STATE 05N | 836 | FSL | 2317 | FWL | 40.39441 | -104.84262 | 1.5 | 4931 | SESW | 13-5-67 |
| 6 | DENALI STATE 06N | 821 | FSL | 2316 | FWL | 40.39437 | -104.84262 | 1.7 | 4931 | SESW | 13-5-67 |
| 7 | DENALI STATE 07N | 807 | FSL | 2316 | FWL | 40.39433 | -104.84262 | 1.7 | 4931 | SESW | 13-5-67 |
| 8 | DENALI STATE 08NA | 791 | FSL | 2316 | FWL | 40.39429 | -104.84262 | 1.7 | 4930 | SESW | 13-5-67 |
| 9 | DENALI STATE 09N | 776 | FSL | 2316 | FWL | 40.39425 | -104.84262 | 1.8 | 4930 | SESW | 13-5-67 |
| 10 | DENALI STATE 10C | 761 | FSL | 2315 | FWL | 40.39421 | -104.84262 | 1.8 | 4930 | SESW | 13-5-67 |
| 11 | DENALI STATE 11N | 746 | FSL | 2315 | FWL | 40.39417 | -104.84262 | 1.9 | 4929 | SESW | 13-5-67 |
| 12 | DENALI STATE 12N | 731 | FSL | 2315 | FWL | 40.39412 | -104.84262 | 1.9 | 4929 | SESW | 13-5-67 |
| 13 | DENALI STATE 13N | 716 | FSL | 2315 | FWL | 40.39408 | -104.84262 | 1.9 | 4928 | SESW | 13-5-67 |
| 14 | DENALI STATE 14NA | 702 | FSL | 2314 | FWL | 40.39404 | -104.84262 | 1.9 | 4928 | SESW | 13-5-67 |
| 15 | DENALI STATE 15N | 686 | FSL | 2314 | FWL | 40.39400 | -104.84263 | 1.9 | 4928 | SESW | 13-5-67 |
| 16 | DENALI STATE 16N | 671 | FSL | 2314 | FWL | 40.39396 | -104.84263 | 1.9 | 4928 | SESW | 13-5-67 |
| 17 | DENALI STATE 17C | 656 | FSL | 2314 | FWL | 40.39392 | -104.84263 | 1.9 | 4927 | SESW | 13-5-67 |
| 18 | DENALI STATE 18N | 641 | FSL | 2313 | FWL | 40.39388 | -104.84263 | 1.9 | 4927 | SESW | 13-5-67 |
| 19 | DENALI STATE 19N | 627 | FSL | 2313 | FWL | 40.39384 | -104.84263 | 2.1 | 4927 | SESW | 13-5-67 |
| 20 | DENALI STATE 20NA | 611 | FSL | 2313 | FWL | 40.39379 | -104.84263 | 2.1 | 4927 | SESW | 13-5-67 |
| 21 | DENALI STATE 21N | 596 | FSL | 2313 | FWL | 40.39375 | -104.84263 | 2.1 | 4927 | SESW | 13-5-67 |
| 22 | DENALI STATE 22N | 581 | FSL | 2312 | FWL | 40.39371 | -104.84263 | 2.0 | 4926 | SESW | 13-5-67 |
| 23 | DENALI STATE 23N | 567 | FSL | 2312 | FWL | 40.39367 | -104.84263 | 2.0 | 4926 | SESW | 13-5-67 |

