

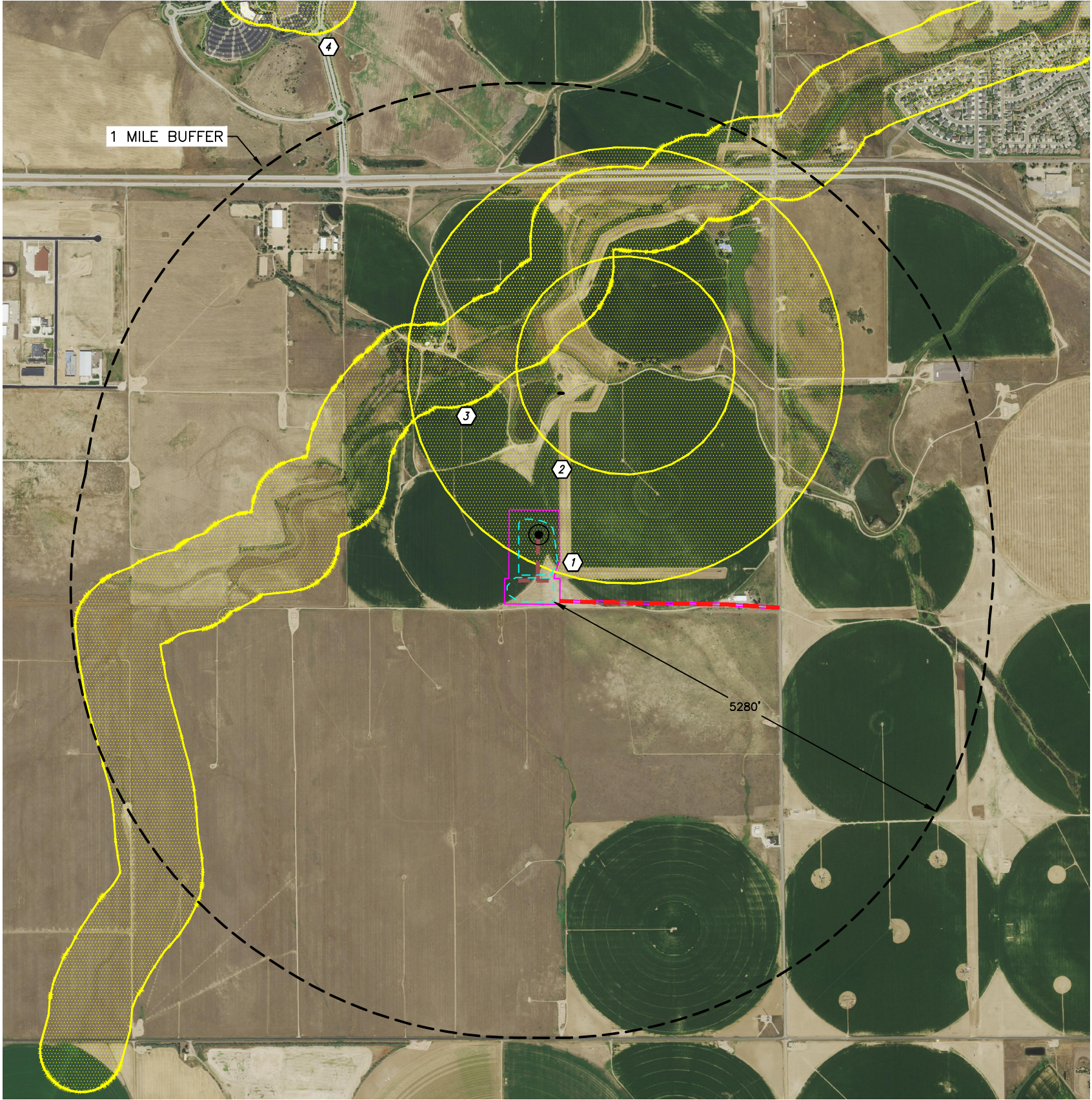


Lat40°, Inc. 6250 W. 10th Street, Unit 2, Greeley, CO 970-515-5294

WILDLIFE HABITAT DRAWING

DENALI STATE 5N67W13 1-23 PAD  
PDC ENERGY

Q-Q: SESW  
SECTION: 13  
TOWNSHIP: 5N  
RANGE: 67W  
6TH. P.M.  
WELD COUNTY, CO



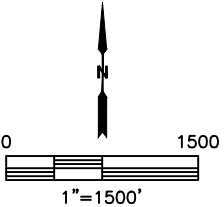
WILDLIFE HABITAT:  
(MEASURED FROM EDGE OF WORKING PAD SURFACE)

ID	DISTANCE (FT)	DIRECTION	DESCRIPTION
1	INSIDE LOCAITON		BALD EAGLE ACTIVE NEST SITE - HALF MILE BUFFER
2	±815	NE	BALD EAGLE ACTIVE NEST SITE - QUARTER MILE BUFFER
3	±1552	NW	AQUATIC NATIVE SPECIES CONSERVATION WATER - 500'
4	±6363	NW	AQUATIC SPORTFISH MANAGEMENT WATERS

- LEGEND
- PROPOSED REFERENCE POINT
  - ID DESIGNATION
  - WORKING PAD SURFACE
  - AREA OF DISTURBANCE
  - HIGH PRIORITY HABITAT
  - ACCESS ROAD
  - PROPOSED FLOWLINE CORRIDOR

NOTE:  
THIS MAP IS A COMPILATION OF PUBLICLY AVAILABLE DATA. THE  
ACCURACY AND COMPLETENESS OF SAID DATA HAD NOT BEEN VERIFIED  
BY LAT40, INC. EXISTING CONDITIONS MAY DIFFER FROM WHAT IS SHOWN.

DATA SOURCE: COGCC, USFWS, ECOS, CPW



DATE: 6/16/2022  
PROJECT#: 2021001