

ENERGY SERVICES

RADIAL BOND TOOL  
GAMMA RAY  
CCL

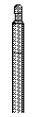
Company	CIVITAS	Company	CIVITAS	Well	ARISTOCRAT ANGUS 44-03C	Field	WATTENBERG	County	WELD	State	CO	Location:	APL # : 05-123-12762 LAT 40.249098 LONG -104.641975 SE/SE	Other Services	
Well	ARISTOCRAT ANGUS 44-03C	Field	WATTENBERG	County	WELD	State	CO	Permanent Datum	GL	Elevation	4773'	Log Measured From	KB 11'	Elevation	KB. 4784'
Field	WATTENBERG	County	WELD	State	CO	Drilling Measured From	KB	SEC 3	TWP 3N	RGE 65W					D.F. 4783'
County	WELD	State	CO												G.L. 4773'
Date	MAY 4 2023														
Run Number	ONE														
Depth Driller	7230'														
Depth Logger	3300'														
Bottom Logged Interval	3296'														
Top Log Interval	SURFACE														
Open Hole Size	7.875"														
Type Fluid	WATER														
Density / Viscosity	N/A														
Max. Recorded Temp.	N/A														
Estimated Cement Top	N/A														
Time Well Ready	ON ARRIVAL														
Time Logger on Bottom	N/A														
Equipment Number	3814														
Location	GREELEY														
Recorded By	MICHAEL RAMSEY														
Witnessed By	DANIEL NASS														
Run Number	Bit	From	To	Size	Weight	From	To								
Casing Record	Size	Wgt/Ft	Top	Bottom											
Surface String	8.625"	24#	SURFACE	422'											
Prot. String															
Production String	4.5"	11.6#	SURFACE	7230'											
Liner															

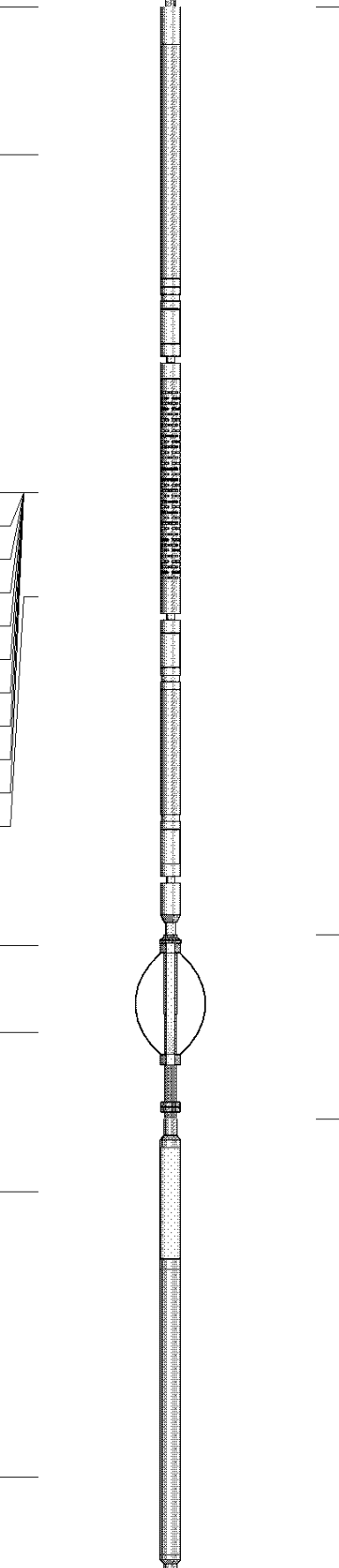
<<< Fold Here >>>

All interpretations are opinions based on inferences from electrical or other measurements and we cannot and do not guarantee the accuracy or correctness of any interpretation, and we shall not, except in the case of gross or willful negligence on our part, be liable or responsible for any loss, costs, damages, or expenses incurred or sustained by anyone resulting from any interpretation made by any of our officers, agents or employees. These interpretations are also subject to our general terms and conditions set out in our current Price Schedule.

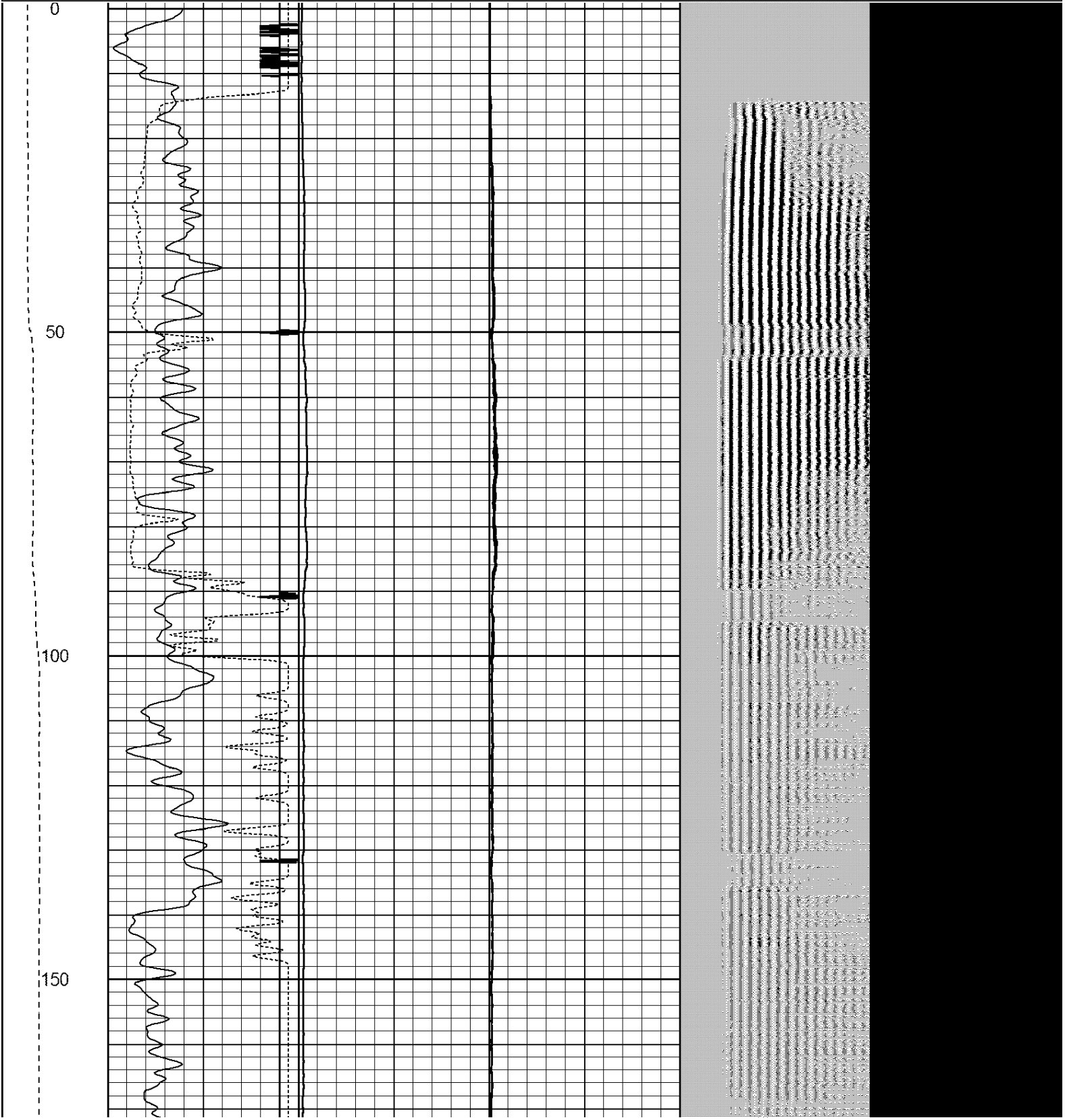
Comments

RAN RBL TO VERIFY CEMENT BOND  
WELL LOADED UPON ARRIVAL  
LOG NOT CORRELATED  
POSSIBLE AERATED FLUID 1100' - SURFACE

Sensor	Offset (ft)	Schematic	Description	Len (ft)	OD (in)	Wt (lb)
			CHD1_4	1.00	1.44	1.00

HEADVOL I	15.02						
IntTemp	13.60						
WVF3FT	10.35						
WVFCAL	10.35						
WVFS1	10.35						
WVFS2	10.35						
WVFS3	10.35						
WVFS4	10.35						
WVFS5	10.35						
WVFS6	10.35						
WVFS7	10.35						
WVFS8	10.35						
WVF5FT	9.35						
CNLSC	6.00						
CNSSC	5.17						
CCL	3.64						
GR	0.90						
				RBT-Probe (Base) Probe Radli Bond Tool with Digital Telemetry	8.92	2.75	90.00
				CNT-Probe_B (275) 6 bow centralizer	1.77	2.75	40.00
				GR-Probe (275) Probe 2.75"	4.33	2.75	30.00
Dataset: aristocrat angus 44-03c.db: field/well/run1/pass8 Total Length: 16.02 ft Total Weight: 161.00 lb O.D. 2.75 in							

LSPD	200	TT (usec)	1000	0	AMP (mV)	100	0	AMPS1	100	200	VDL	1200	1	Cement Map	8
(ft/min)	-9	CCL	1				0	AMPS2	100				100		1
0	250	0	GR (GAPI)	150			0	AMPS3	100						
		150	GR (GAPI)	400			0	AMPS4	100						
							0	AMPS5	100						
							0	AMPS6	100						
							0	AMPS7	100						
							0	AMPS8	100						

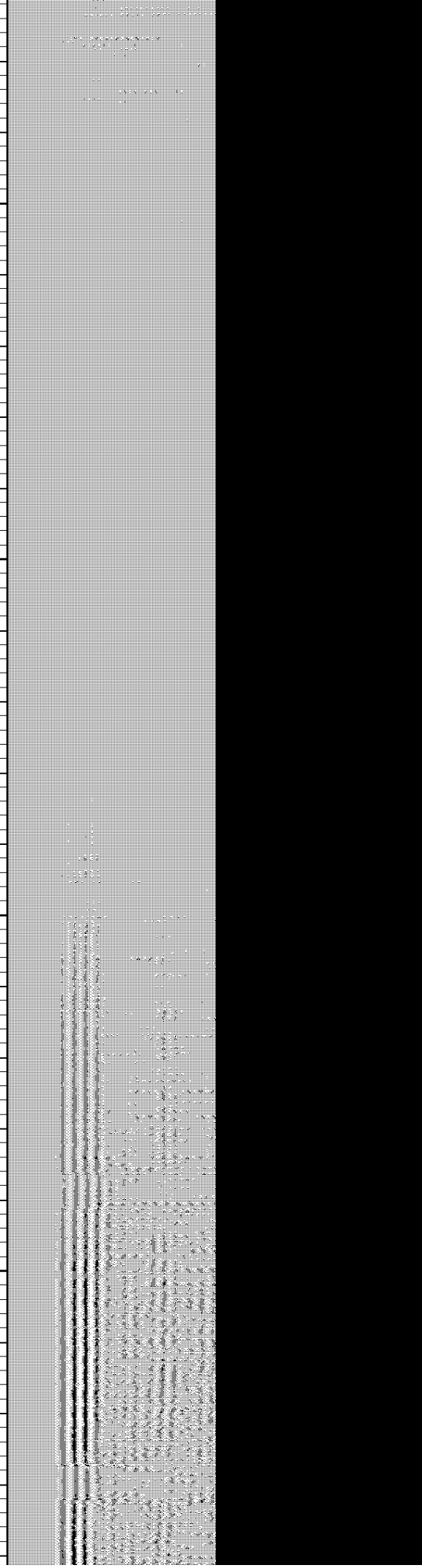
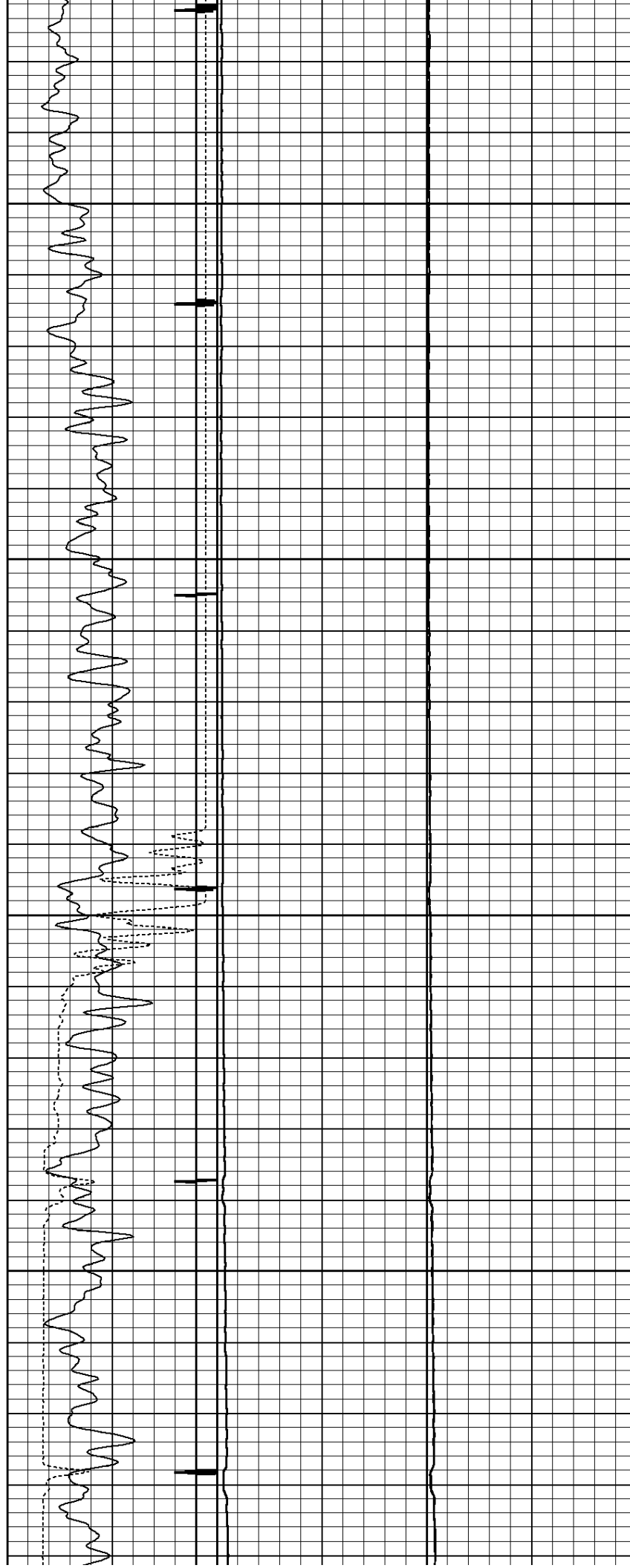


200

250

300

350



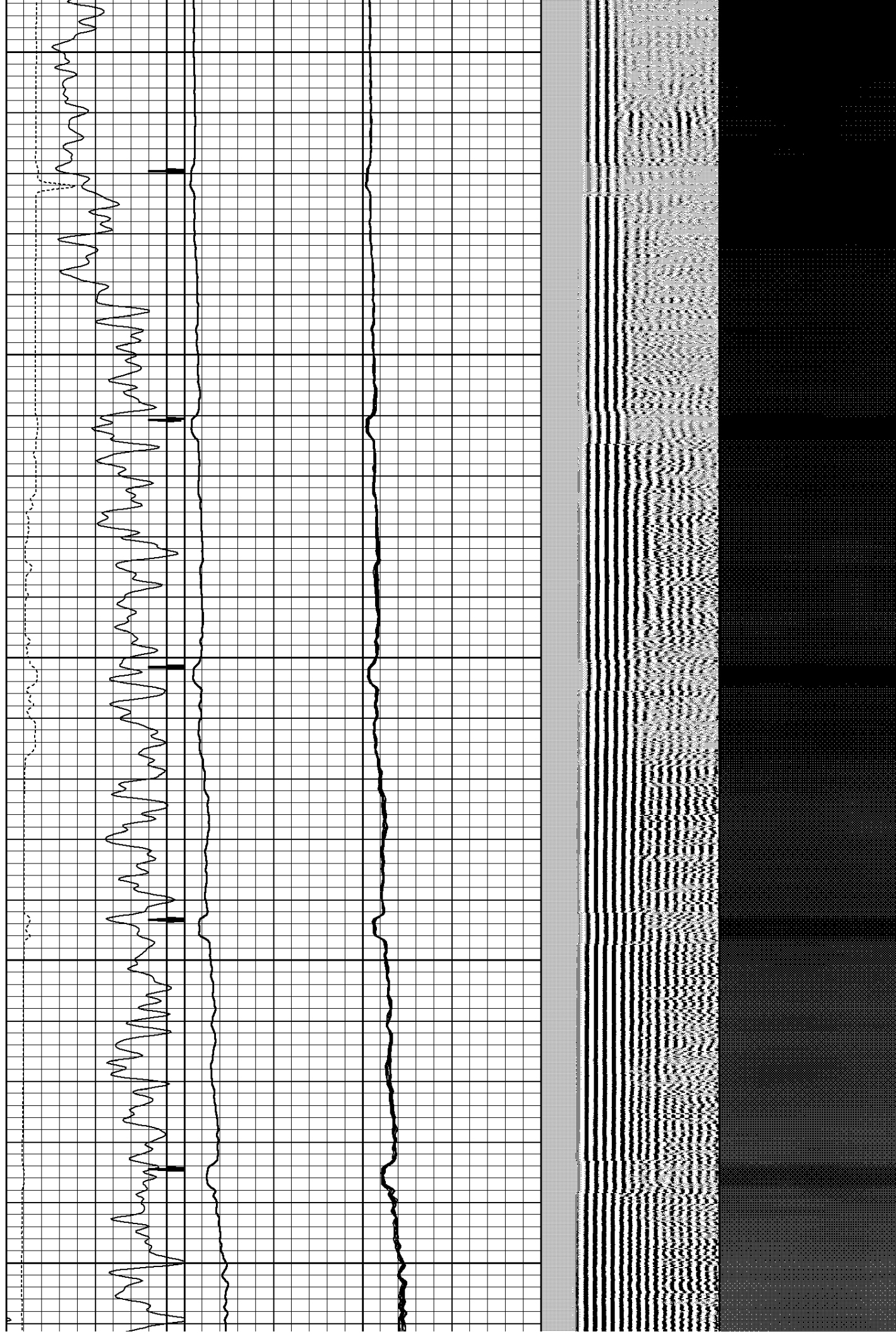
400

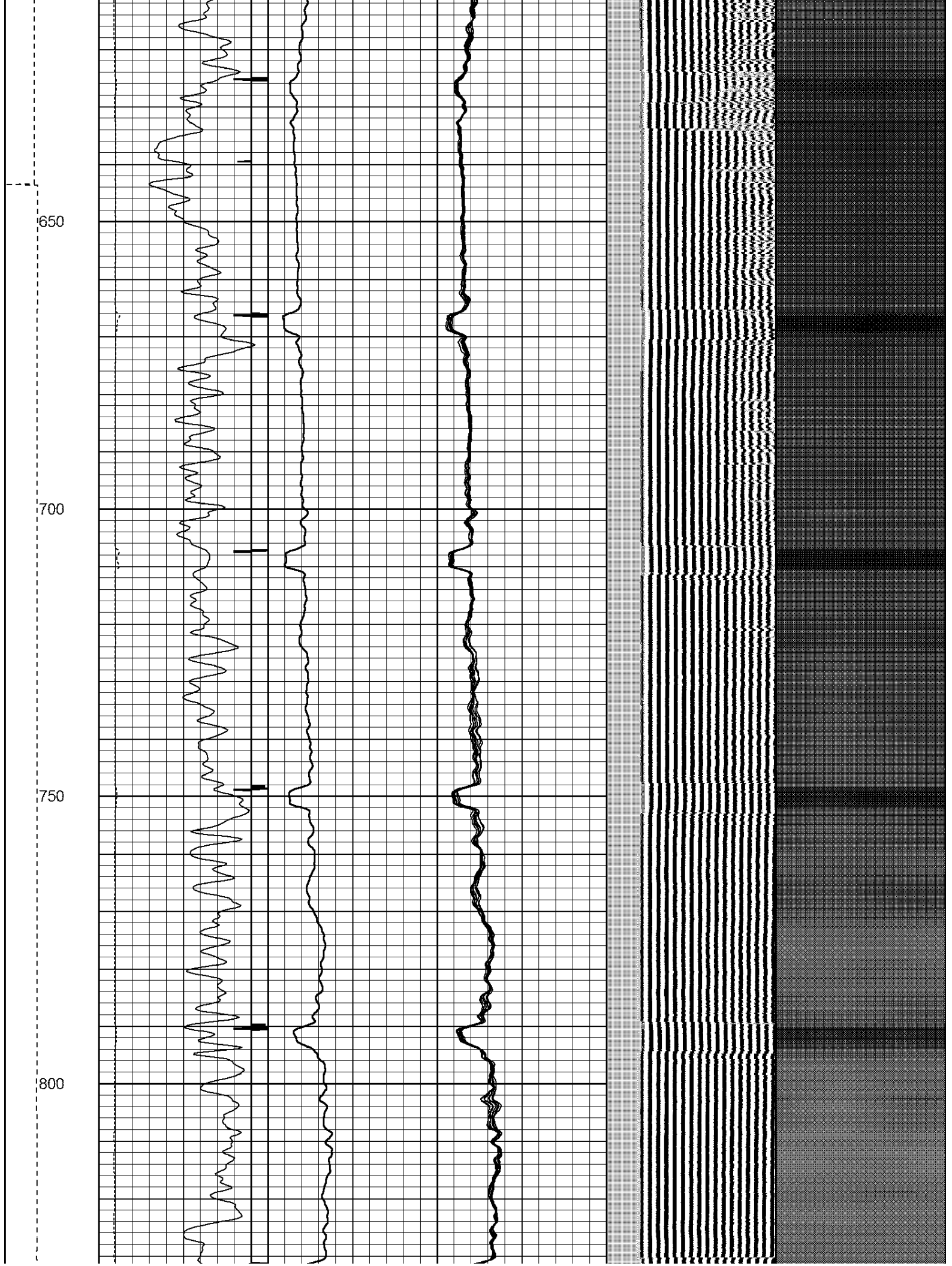
450

500

550

600





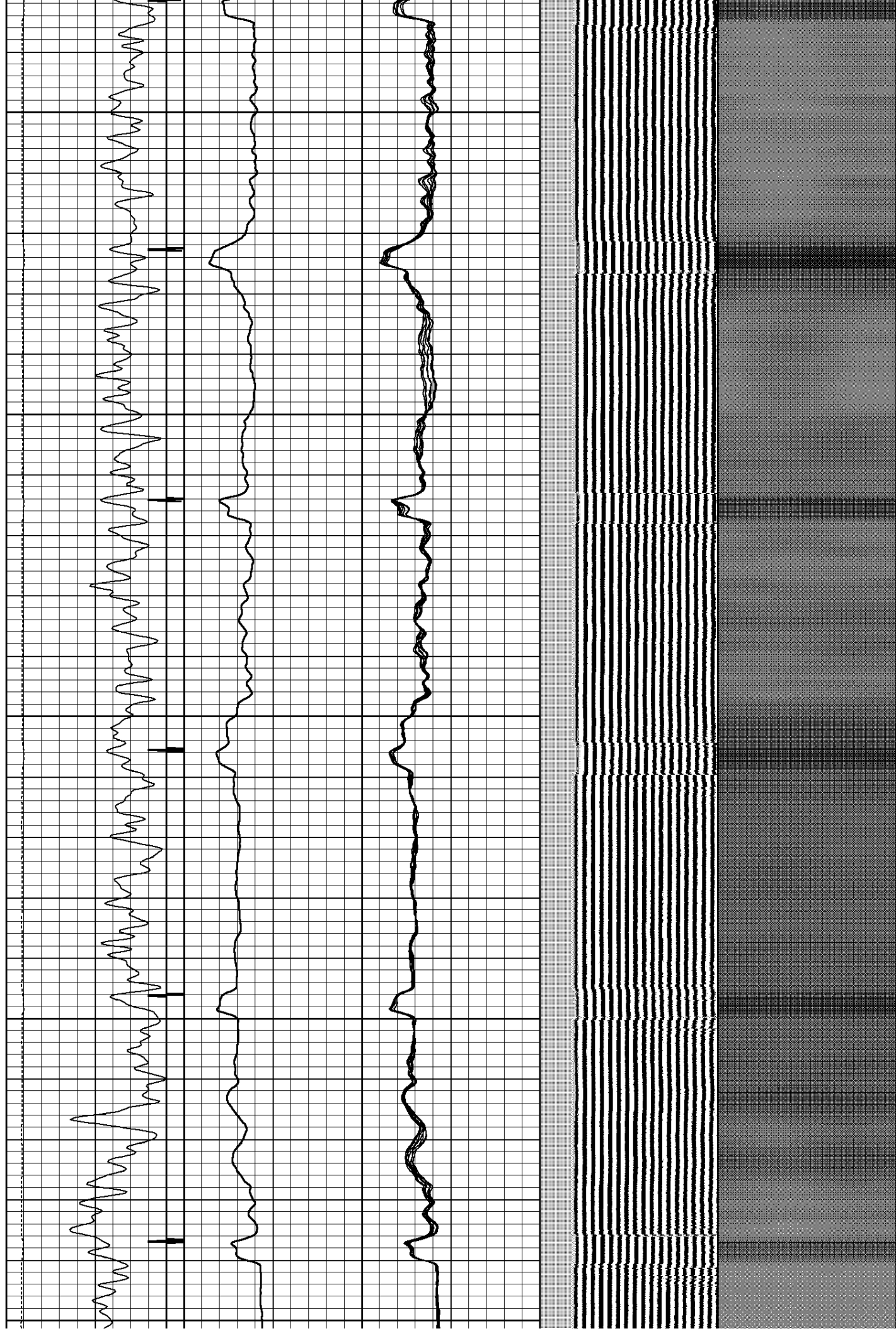
850

900

950

1000

1050



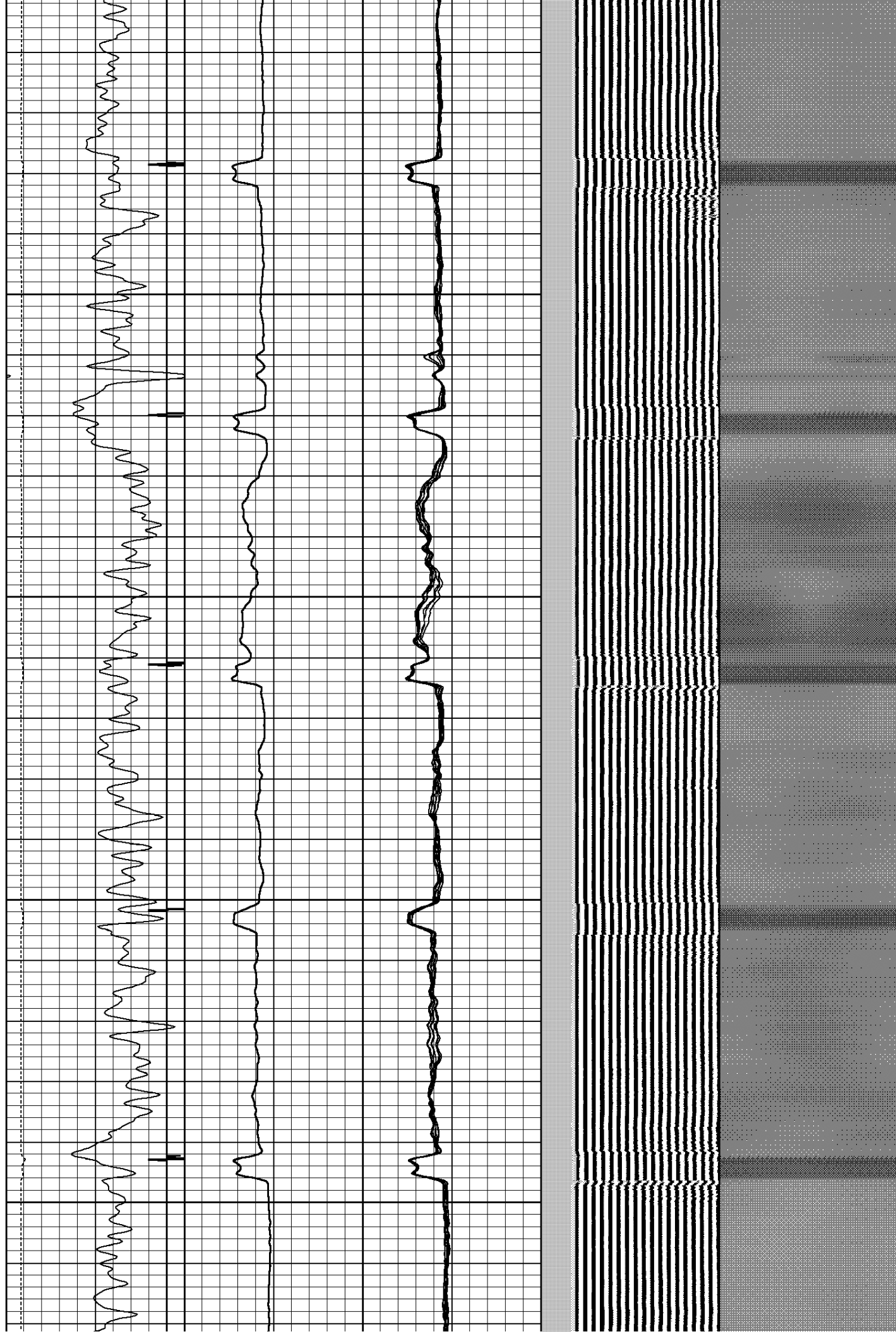


1100

1150

1200

1250



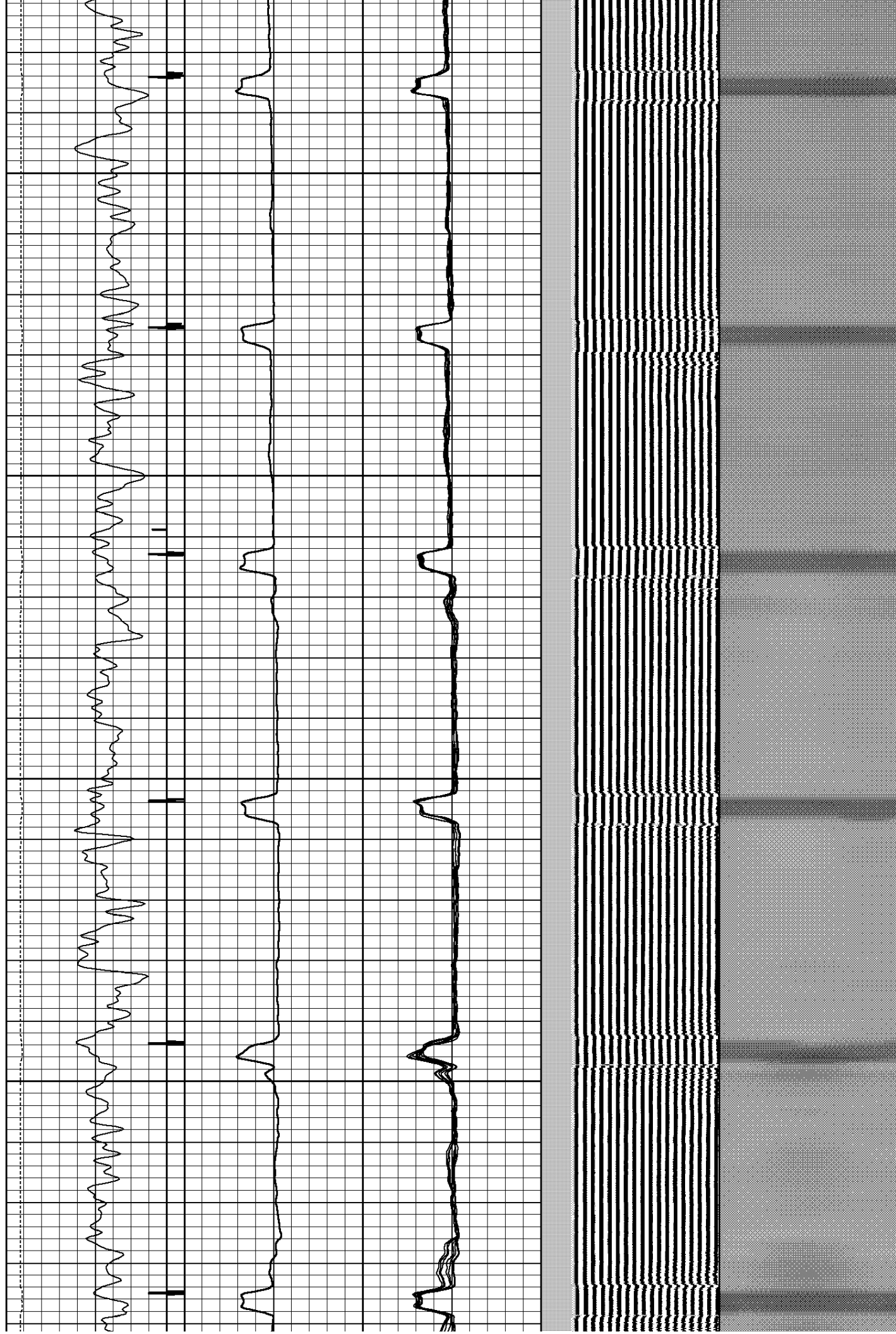


1300

1350

1400

1450



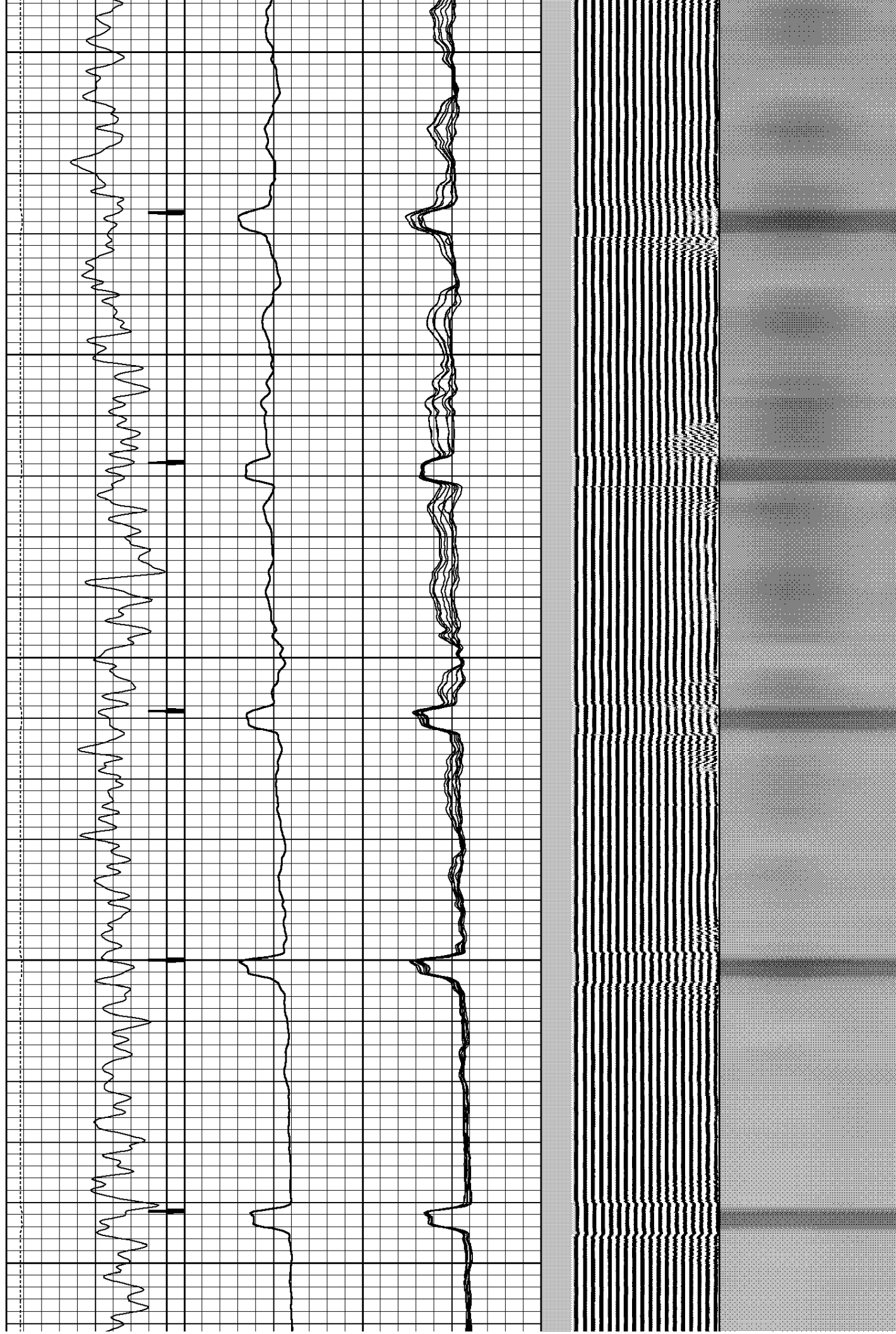
1500

1550

1600

1650

1700

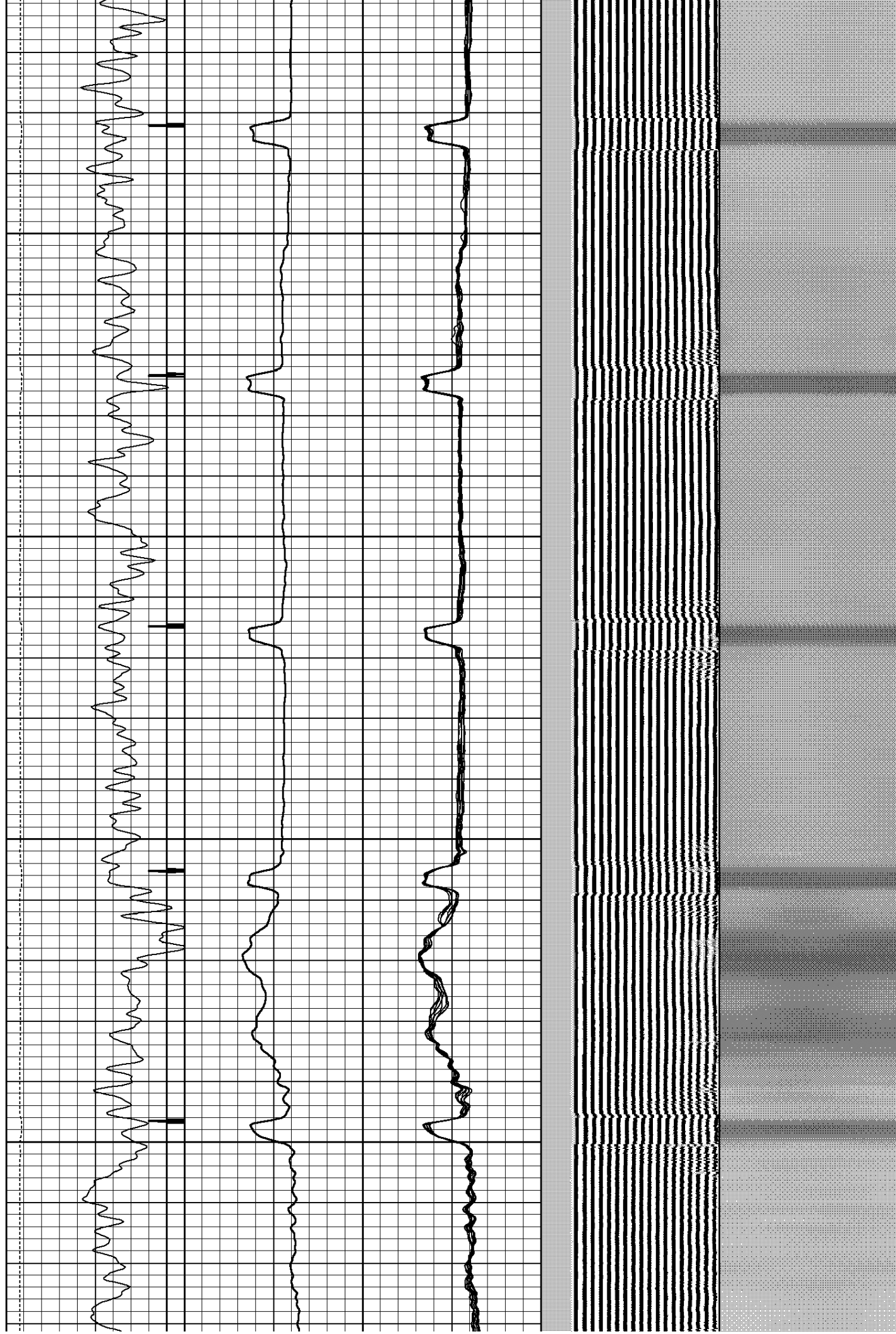


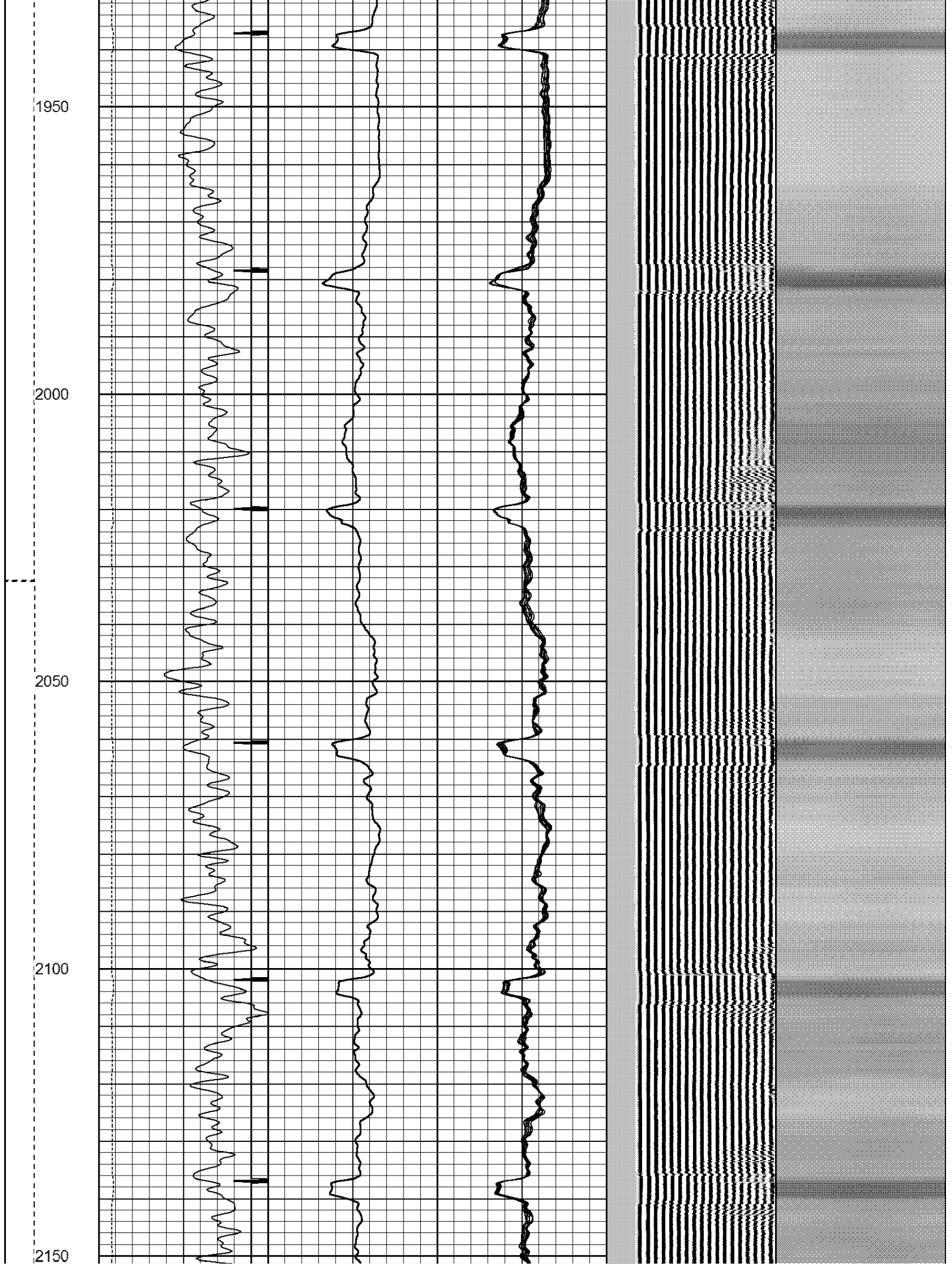
1750

1800

1850

1900





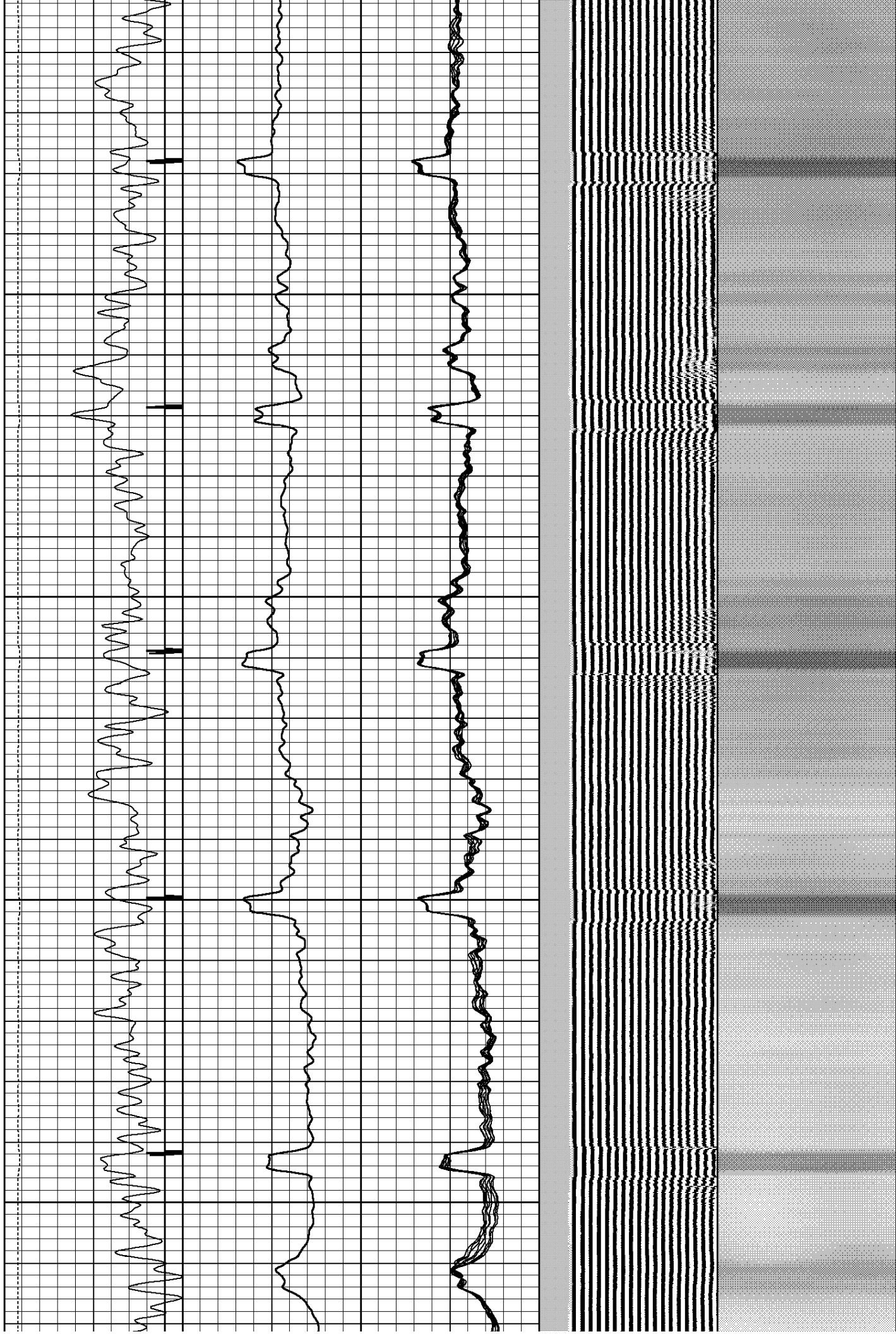


2200

2250

2300

2350

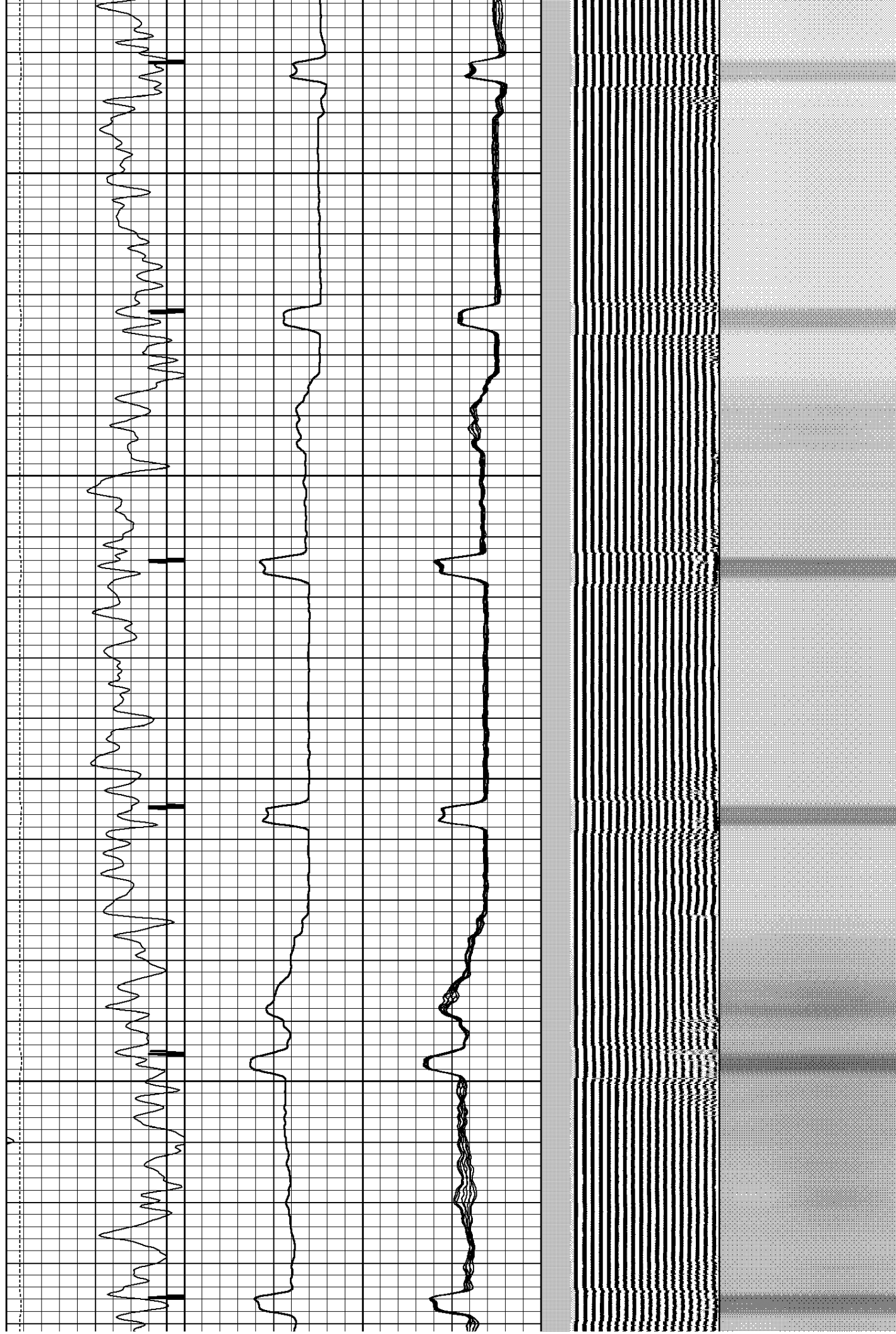


2400

2450

2500

2550





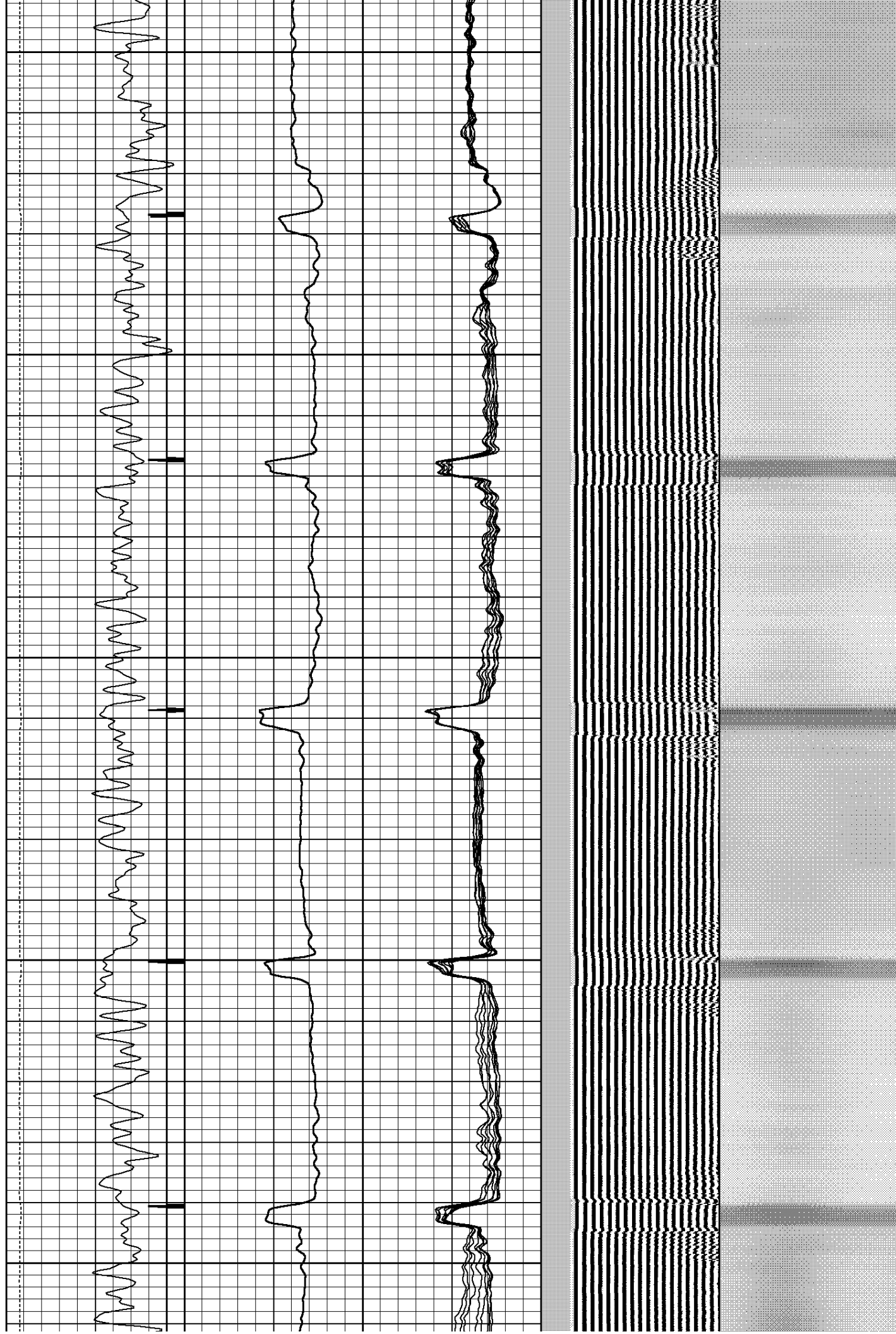
2600

2650

2700

2750

2800

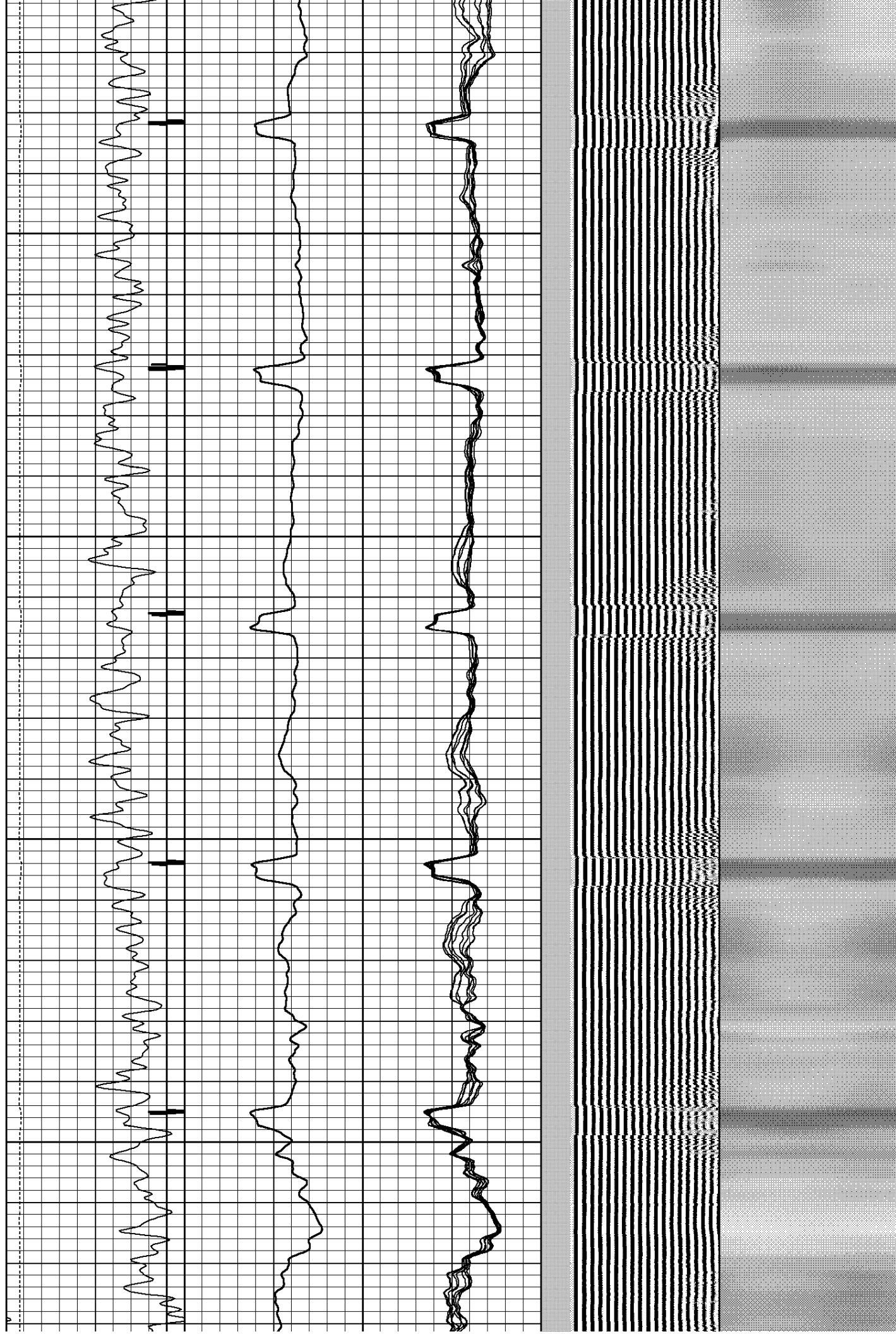


2850

2900

2950

3000



3050

3100

3150

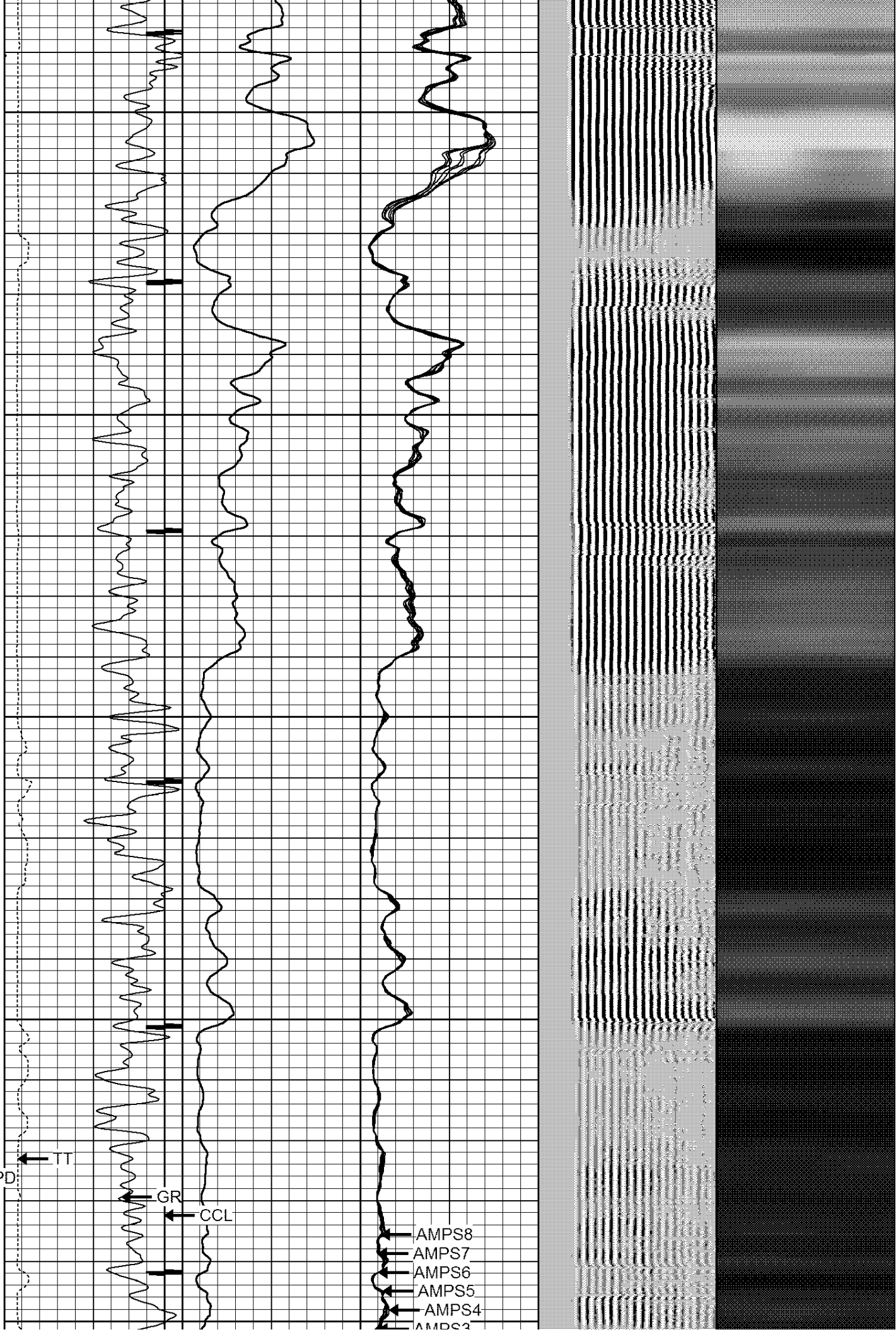
3200

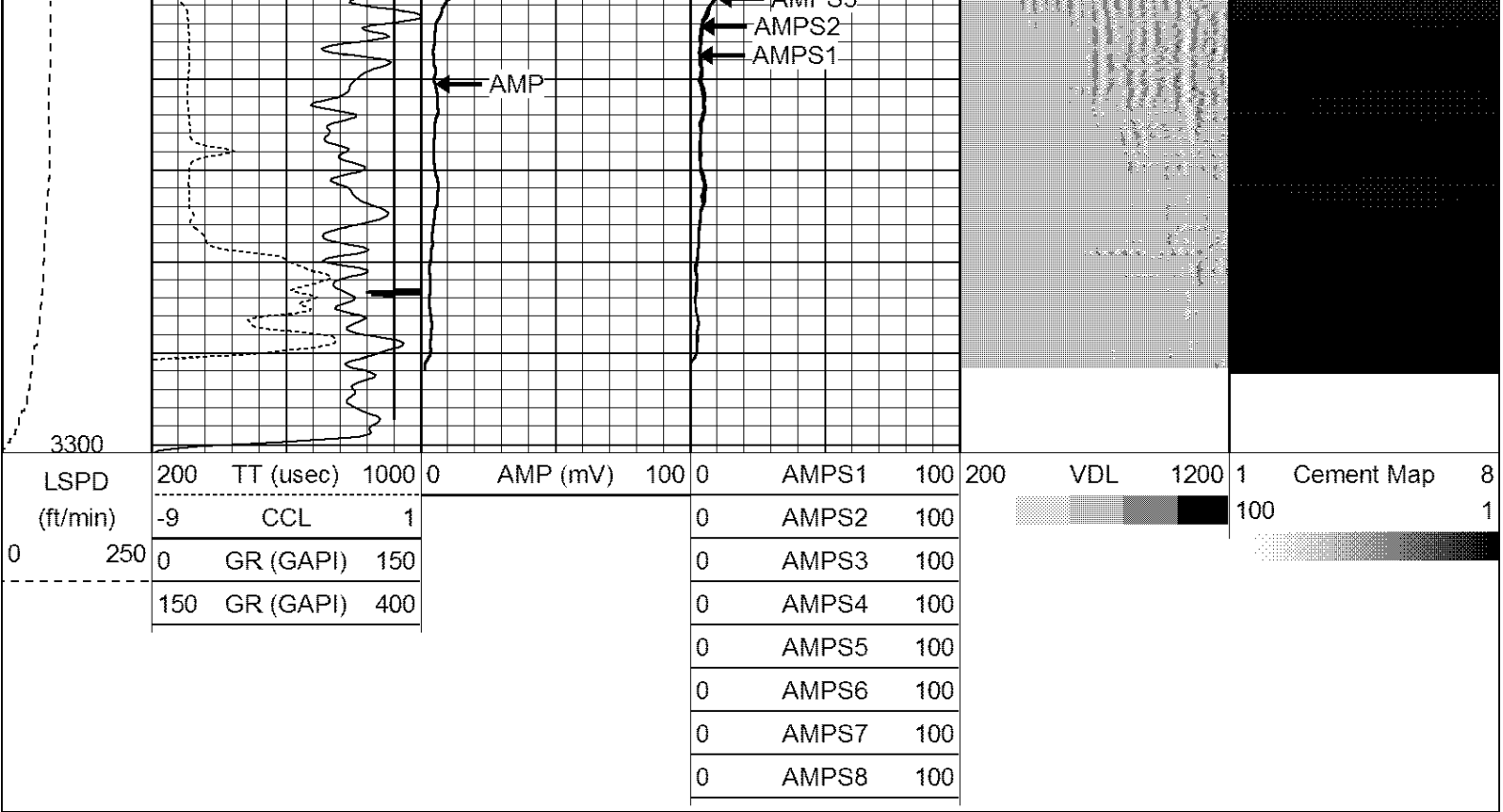
3250

← LSPD  
← TT

← GR  
← CCL

← AMPS8  
← AMPS7  
← AMPS6  
← AMPS5  
← AMPS4  
← AMPS3





Company	CIVITAS
Well	ARISTOCRAT ANGUS 44-03C
Field	WATTENBERG
County	WELD
State	CO