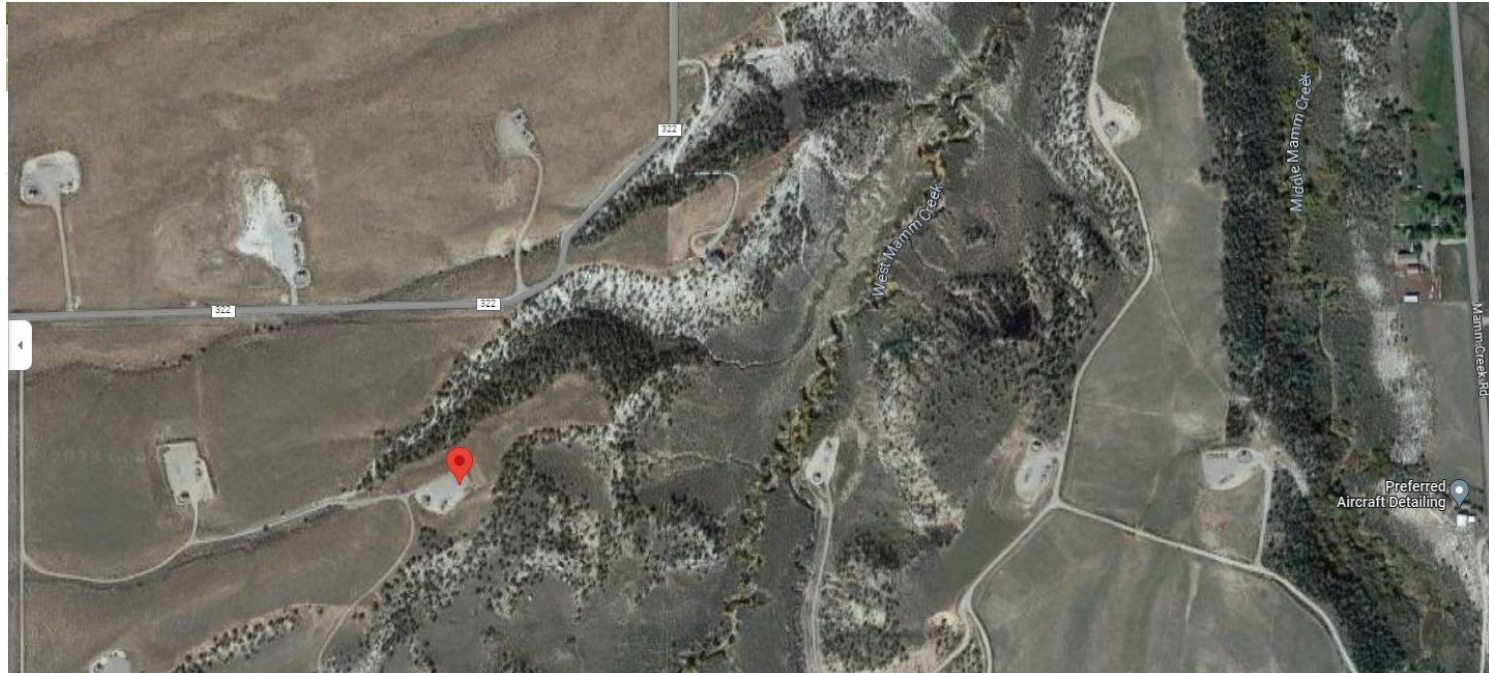


Storm Water Management and Erosion control
Location Name: CAERUS PICEANCE LLC A18E Pad
Location ID: 323979



**Location Overview: Location is approximately 374 yards from
West Mamm Creek
Section/Township/Range: 18 7S92W**



COLORADO
Oil & Gas Conservation
Commission
Department of Natural Resources

Storm water Management and Erosion control
Location Name: CAERUS PICEANCE LLC A18E Pad
Location ID: 323979



North West corner of location.



North East corner of location.



South West corner of location.



South East corner of location.

Storm water Management and Erosion control
Location Name: CAERUS PICEANCE LLC A18E Pad
Location ID: 323979



**Photo # 1606 Transport of sediment off location/
insufficient runoff controls/BMP's**



**Photo # 1642 Transport of sediment off location/
insufficient runoff controls/BMP's**

Storm water Management and Erosion control
Location Name: CAERUS PICEANCE LLC A18E Pad
Location ID: 323979



**Photo # 1643 Transport of sediment off location/
insufficient runoff controls/BMP's**



**Photo # 1644 Transport of sediment off location/
insufficient runoff controls/BMP's**

Storm water Management and Erosion control
Location Name: CAERUS PICEANCE LLC A18E Pad
Location ID: 323979



Photo # 1645 Transport of sediment off location/insufficient runoff controls/BMP's



Photo # 1672 Culvert needs maintenance/culvert crimped/reduced capacity



Storm water Management and Erosion control
Location Name: CAERUS PICEANCE LLC A18E Pad
Location ID: 323979



**Photo # 1673 Culvert needs maintenance/culvert
crimped/reduced capacity**