

## Inspection Photos

Location Name: TEP ROCKY MOUNTAIN LLC RWF 332-21 Pad

Location #: 335340



Photo # 1728 From entrance to location



Photo # 1729 From entrance to location



## Inspection Photos

Location Name: TEP ROCKY MOUNTAIN LLC RWF 332-21 Pad

Location #: 335340



Photo # 1730 Location



Photo # 1731 Location



**COLORADO**  
Oil & Gas Conservation  
Commission  
Department of Natural Resources

## Inspection Photos

Location Name: TEP ROCKY MOUNTAIN LLC RWF 332-21 Pad

Location #: 335340



Photo # 1732 Location



Photo # 5402 From Inspection 708900295 conducted on  
04/17/2023 Meter calibration info not conspicuously posted



## Inspection Photos

Location Name: TEP ROCKY MOUNTAIN LLC RWF 332-21 Pad

Location #: 335340



**Photo # 1734 Meter calibration info not conspicuously posted**



**Photo # 1735 Meter calibration info not conspicuously posted**

## Inspection Photos

Location Name: TEP ROCKY MOUNTAIN LLC RWF 332-21 Pad

Location #: 335340



Photo # 5403 From Inspection 708900295 conducted on 04/17/2023 Meter calibration info not conspicuously posted



Photo # 1733 Meter calibration info not conspicuously posted



**COLORADO**  
Oil & Gas Conservation  
Commission  
Department of Natural Resources



## Inspection Photos

Location Name: TEP ROCKY MOUNTAIN LLC RWF 332-21 Pad

Location #: 335340



Photo # 1737 Open ended pipe on top of separator unit

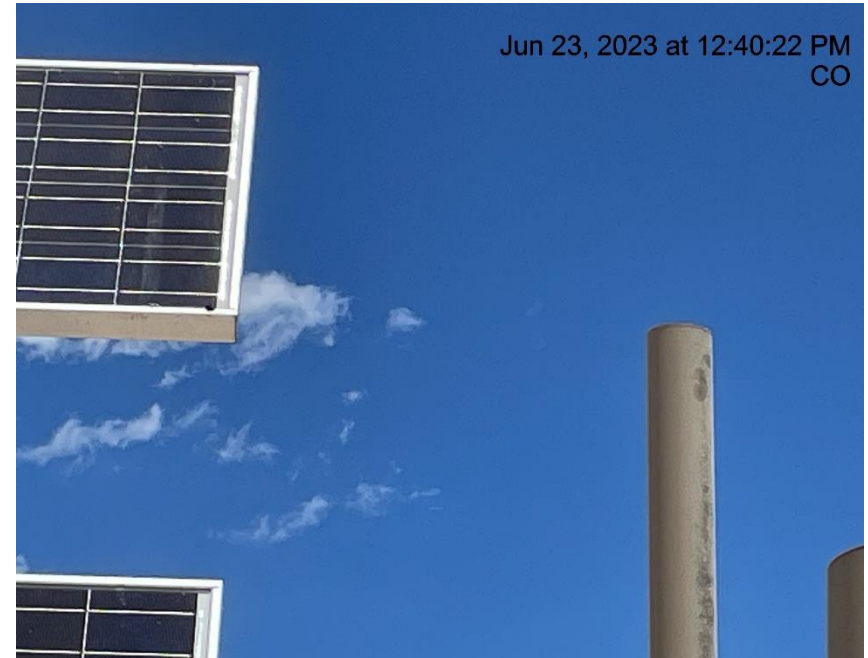


Photo # 1738 Open ended pipe on top of separator unit