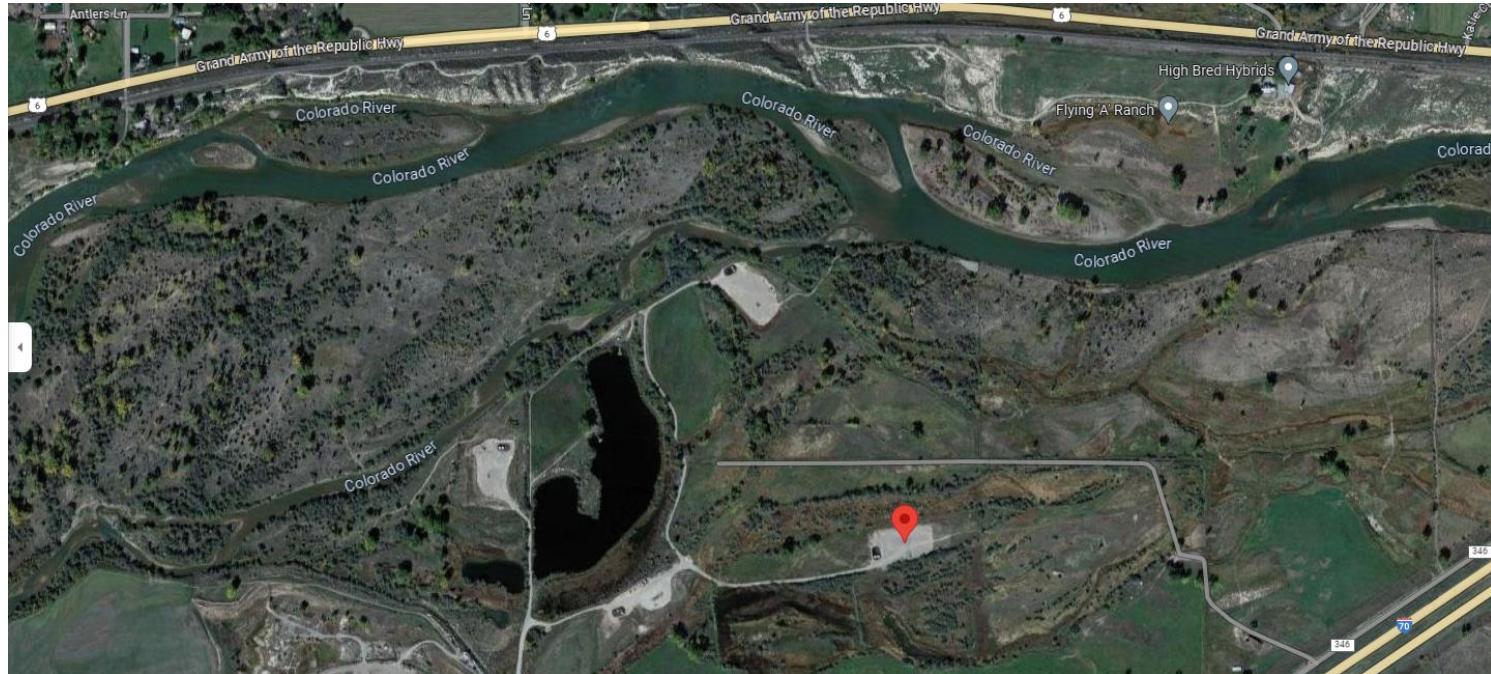


Storm Water Management and Erosion control
Location Name: TEP ROCKY MOUNTAIN LLC RIVER RANCH C Pad
Location #: 336028



Location Overview: Location is within a 411a Surface Water External Buffer, approximately 512 yards from the Colorado River & is within close proximity to National Wetlands Inventory area. Location is also approximately 780 yards from FEMA 100 year Floodplain.

Section/Township/Range: 8 6S92W



COLORADO
Oil & Gas Conservation
Commission
Department of Natural Resources

Storm water Management and Erosion control
Location Name: TEP ROCKY MOUNTAIN LLC RIVER RANCH C Pad
Location #: 336028



North West corner of location.



North East corner of location.



South West corner of location.



South East corner of location.