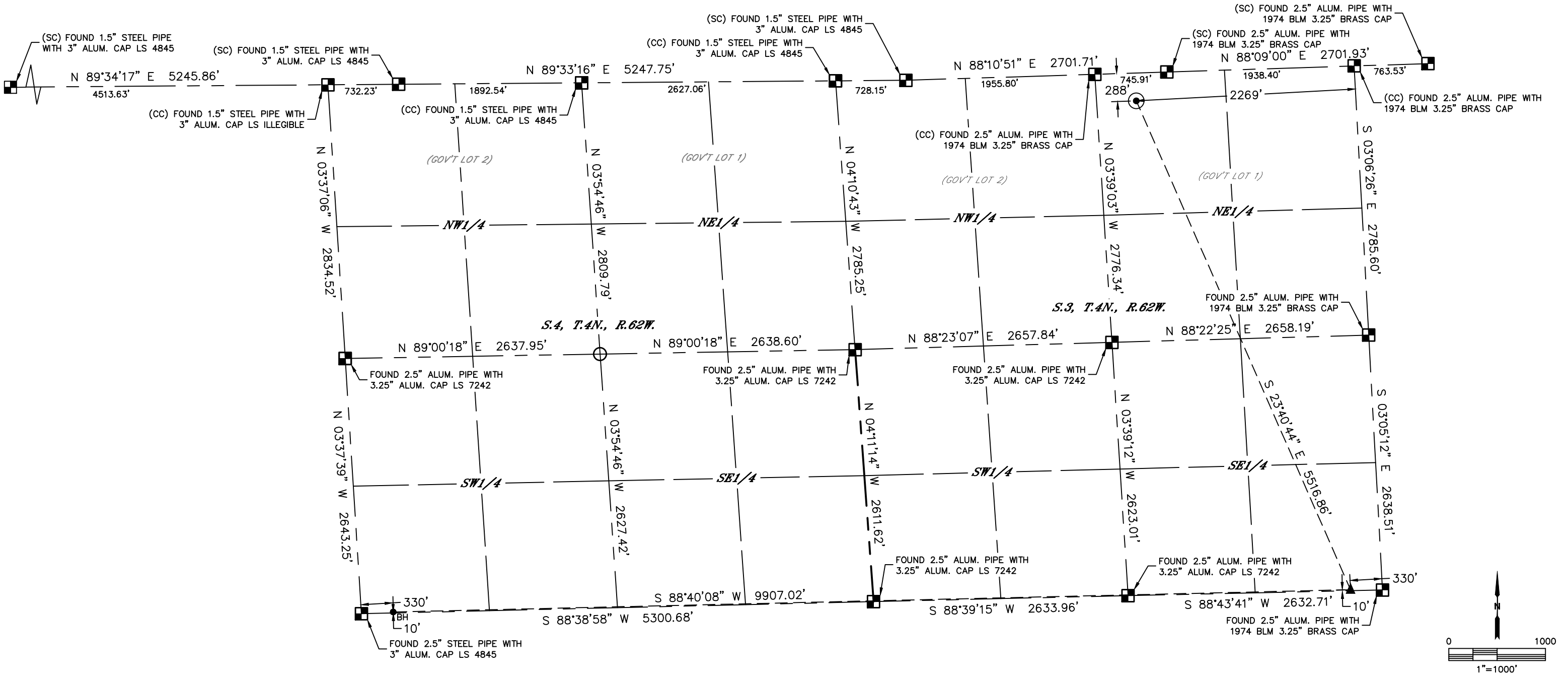




Lat40°, Inc. 6250 W. 10th Street, Unit 2, Greeley, CO 970-515-5294

WELL LOCATION CERTIFICATE
STATE SEVENTY HOLES Y-E-10HNXRL
BONANZA CREEK ENERGY OPERATING CO LLC

Q: NW4NE4
SECTION: 3
TOWNSHIP: 4N
RANGE: 62W
6TH. P.M.
WELD COUNTY, CO

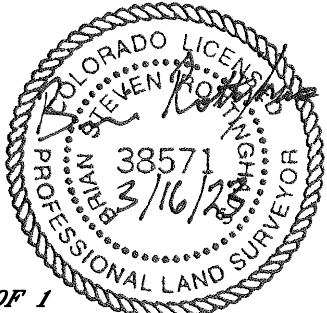


- LEGEND
- = ALIQUOT MONUMENT AS DESCRIBED
 - = CALCULATED POSITION
 - ⊙ = SURFACE HOLE LOCATION (SHL)
 - ▲ = ENTRY POINT LOCATION (EP)
 - ◆ = TOP OF PRODUCTIVE ZONE (PZONE)
 - _{BH} = BOTTOM HOLE LOCATION (BHL)
 - ⊕ = EXISTING WELL
 - ⊖ = ABANDONED WELL

CLIENT: BONANZA CREEK ENERGY OPERATING Co. LLC				LANDMAN: TROY OWENS			
INSTRUMENT OPERATOR: RYAN CHAMPION				SURVEY DATE: 5/20/2022		SURFACE USE: RANGELAND	
SHL FOOTAGE		SHL LAT°	SHL LONG°	SHL PDOP	SHL ELEV (FT.)	SHL 1/4/1/4	SHL S-T-R
288	FNL	2269	FEL	40.34820	-104.31094	1.6	4549
BHL FOOTAGE		BHL LAT°	BHL LONG°	BHL S-T-R	EP LAT°	EP LONG°	EP S-T-R
10	FSL	330	FWL	40.33398	-104.33877	4-4-62	40.33425

NOTE:

- 1) Bearings shown are Grid Bearings of the Colorado State Plane Coordinate System, North Zone, North American Datum 1983. The lineal dimensions as contained herein are based upon the "U.S. Survey Foot."
- 2) Distances to section lines measured at 90 degrees from said section lines.
- 3) Ground elevations are based on an observed GPS elevation (NAVD 1988 DATUM).
- 4) Latitude and Longitude shown are (NAD 83 DATUM).
- 5) IMPROVEMENTS: See LOCATION DRAWING for all visible improvements.
- 6) This map does not represent a boundary survey.



SHEET 1 OF 1
Brian S. Rottinghaus—On behalf of Lat40°, Inc.
Colorado Licensed Professional Land Surveyor No. 38571
DATE: 3/16/2023
PROJECT#: 2022166