

NEWLIN #1

(API #009-06275)

Loc. #321048

FIELD NAME GREENWOOD - #33250

Spud Date 10/30/1980

Basin DENVER - JULESBURG

Location NWSE 19 31S 41W

Elevation GL (ft) 3701

Elevation KB (ft) 3711

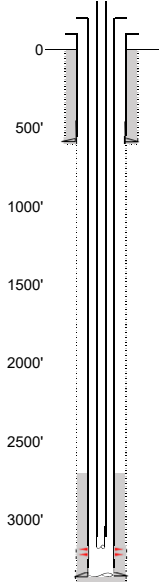
TD (ft) 3360

QC: M/H

Formation Tops

STONE CORAL - 1444'

TOPEKA - 3007'
 TOPEKA A - 3040'
 TOPEKA B - 3093'
 TOPEKA C - 3146'
 TOPEKA D - 3236'

EXISTING**Existing Casing and Cement Coverage**

SURF: Size: 8.625", Hole Size: 12.25"
 Depth: 584 ft., Weight: 28
 Cement: 450 sx, Top: 0 ft., Method: Vis

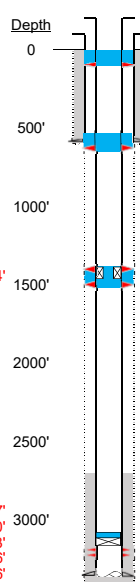
Deepest DWR w/in 1 mi. = 485'

STONE CORAL - 1444'

1ST, Size: 4.5", Hole Size: 7.875"
 Depth: 3376', Weight: 10.5
 Cement: 150 sx, TOC: 2700' Method: CALC, OWP

tubing set UNK
 TOC = 2700' (CALC, OWP)
 Topeka C Perfs 3193'-3197'
 PBTD (ft) 3338'
 TD (ft) 3360'

TOPEKA - 3007'
 TOPEKA A - 3040'
 TOPEKA B - 3093'
 TOPEKA C - 3146'
 TOPEKA D - 3236'

PROPOSED**Plug Placement**

Perf at 100' and pump 40
 sx to surface.

Perf at 634', pump 30 sx
 through perfs. Leave 15 sx
 inside. Tag above 534'
 required.

Perf at 1494' & 1394',
 retainer at 1404', and pump
 30 sx through perfs. Leave
 10 sx on top.

CBL Required

VERIFY TOC w/ CBL

Pressure test casing
 after setting CIBP.

CIBP w/ 2 sx @ 3118'
 (75' above top perf).