

# HUNT #1

(API #009-06247)

Loc. #321033

FIELD NAME GREENWOOD - #33250

Spud Date 2/17/1980

Basin DENVER - JULESBURG

Location NWSE 30 31S 41W

Elevation GL (ft) 3699

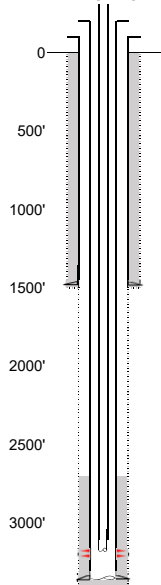
Elevation KB (ft) 3709

TD (ft) 3362

## Formation Tops

TOPEKA - 3026'  
TOPEKA A - 3076'  
TOPEKA B - 3122'

## EXISTING



### Existing Casing and Cement Coverage

SURF: Size: 8.625", Hole Size: 12.25"  
Depth: 1493 ft., Weight: 24  
Cement: 900 sx, Top: 0 ft., Method: Vis

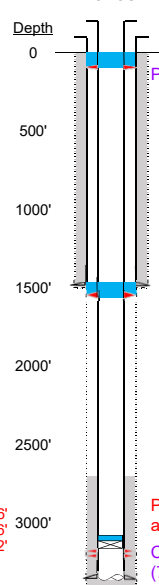
Deepest DWR w/in 1 mi. = 430'  
SOUTHERN HIGH PLAINS AQUIFER & OGALLALA AQUIFER  
DWR site yielded no results, aquifer depths not provided

1ST, Size: 4.5", Hole Size: 7.875"  
Depth: 3330', Weight: 10.5  
Cement: 150 sx, TOC: 2700', Method: CALC (OWP)

2-3/8" tubing set at 3190'  
TOC = 2700' (CALC, OWP)  
Topeka B Perfs 3184'-3205'  
PBSD (ft) UNK  
TD (ft) 3362'

TOPEKA - 3026'  
TOPEKA A - 3076'  
TOPEKA B - 3122'

## PROPOSED



### Plug Placement

Perf at 100' and pump  
40 sx to surface.

Perf at 1543', pump  
30 sx through perfs.  
Leave 15 sx inside.  
Tag above 1443'.

CBL Required  
VERIFY TOC w/ CBL

Pressure test casing  
after setting CIBP.  
CIBP w/ 2 sx @ 3109'  
(75' above top perf).