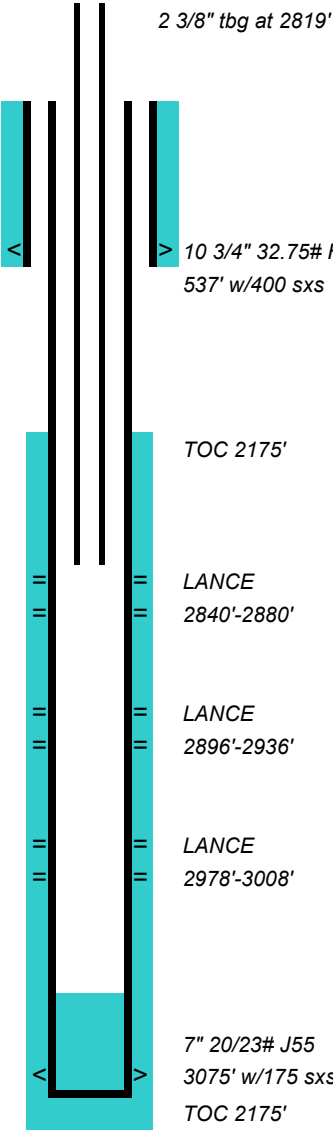


WELL BORE SKETCH (09/03/07)

FEDERAL WINDER 1
NE NE 33-8N-90W
MOFFATT CO., CO.

SPUD: 08/09/56 TD: 3075' GL: 6450' KB: 6462'



2 3/8" tbg at 2819'

<

> 10 3/4" 32.75# H40
537' w/400 sxs

COMPLETION:

PF: LANCE: 2978'-3008' (4spf)

Acid w/ 500 g 15% MA ---- 75 mcf

Frac w/10000 g SW --- 375 mcf

Frac w/17000 g SW, 17,000# 20/40 sd --- 2100 mcf

CIBP at 2968'

PF: 2896'-2936' --- 1800 mcf

Acid w/1000 g 7 1/2% MA -- 268 mcf

Frac w/18000 g SW, 18000# sd --- 4500 mcf

CIBP at 2884'

PF: 2840'-2880'

Swab. Rec frac sand

Drill out CIBPs and clean out to 3048'

RIH w/2 3/8" J55 tubing to 2819'. --- 6000 mcf AOF 14 MMCFD

WO: 08/07: PUT ON PUMP

TOC 2175'

LANCE
2840'-2880'

LANCE
2896'-2936'

LANCE
2978'-3008'

7" 20/23# J55
3075' w/175 sxs
TOC 2175'