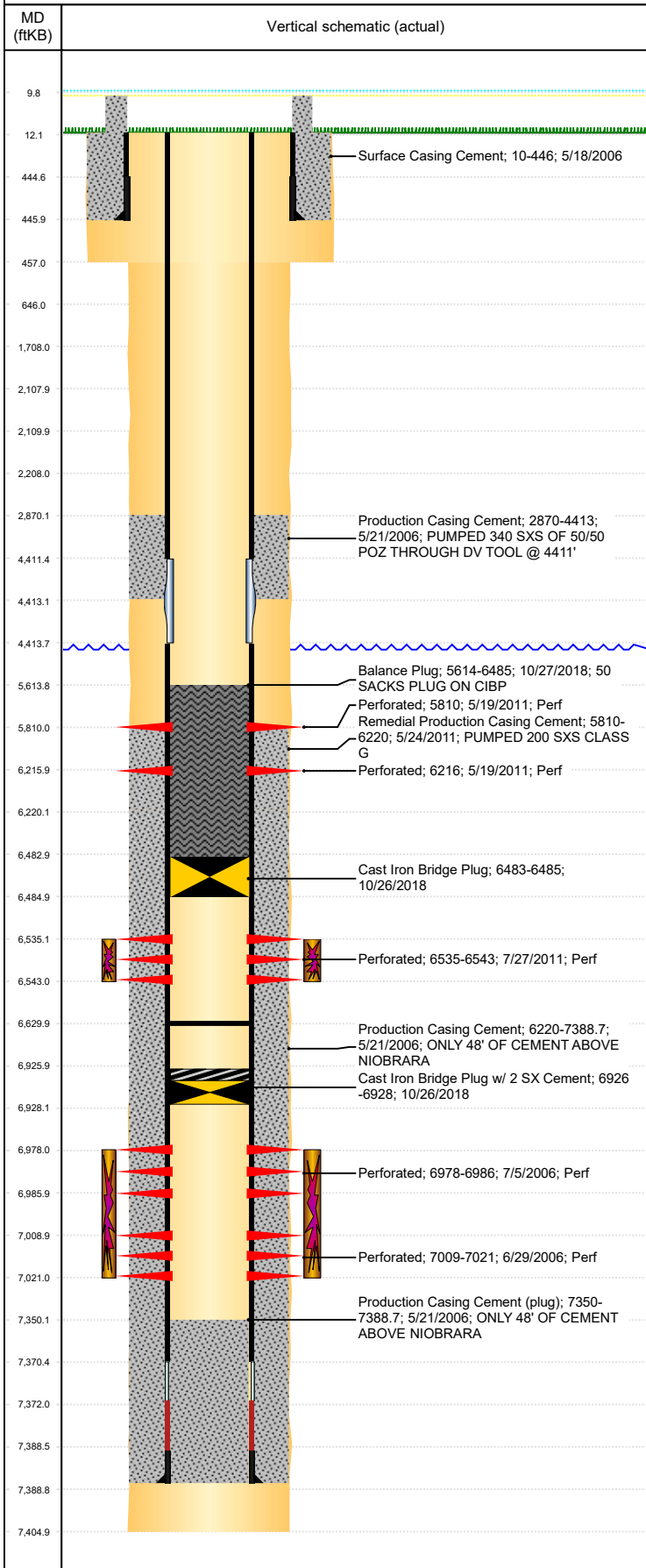




P&A Wellbore For State

Well Name: 70 RANCH 13-21

Land, Original Hole, 6/6/2023 7:05:32 AM



Well Header									
Surface UWI 0512323816			Business Unit Rockies			Gov Auth Dist		Prod Tree Loc Land	
Orig. KB to Gnd (ft) 12.00		Original Spud Date 5/17/2006		Abandon Date		Well Sub-Status TA			High... N
Comment DV TOOL @ +/-4411'									
Surface Location (Congressional)									
Qtr 3 NW	Qtr 4 SW	Section 21	Twnshp 5	Twنش... N	Range 63	Rng E/... W	Latitude (°) 40.38363713 1	Longitude (°) -104.448156708	
Wellbore Sections									
Section Des			Hole Size (in)			Act Top (ftKB)		Act Btm (ftKB)	
SURFACE			12 1/4			12.0		457.0	
PRODUCTION			7 7/8			457.0		7,405.0	
Casing Strings									
Csg Des		Run Date		OD (in)	Wt/Len (lb/ft)	Grade	Top Depth (MD) (ftKB)	Set Depth (MD) (ftKB)	
Surface		5/18/2006		8 5/8	24.00	J-55	12	446	
Production Casing		5/21/2006		4 1/2	11.60	M-80	12	7388.7	
Cement									
Des				Start Date		Top (ftKB)		Btm (ftKB)	
Surface Casing Cement				5/18/2006		10.0		446.0	
Production Casing Cement				5/21/2006		2,870.0		4,413.0	
Production Casing Cement				5/21/2006		6,220.0		7,388.7	
Remedial Production Casing Cement				5/24/2011		5,810.0		6,220.0	
Balance Plug				10/27/2018		5,614.0		6,485.0	
Zone Statuses									
Zone Name	Status Date	Status	Fluid Type	Job				Prod Method	
J SAND	10/21/2011	PR		RECOMPLETION, 5/18/2011 09:30					
J SAND	10/26/2018	AB		PLUG AND ABANDON, 10/25/2018 06:00					
CODELL	8/23/2011	PR		RECOMPLETION, 5/18/2011 09:30					
CODELL	10/26/2018	AB		PLUG AND ABANDON, 10/25/2018 06:00					
Perforation Data									
Linked Zone		Explosive Type	Entered Shot Total	Top (ftKB)		Btm (ftKB)		Date	
CODELL, Original Hole J SAND, Original Hole J SAND, Original Hole			4	5,810.0		5,810.0		5/19/2011	
			2	6,216.0		6,216.0		5/19/2011	
			32	6,535.0		6,543.0		7/27/2011	
			32	6,978.0		6,986.0		7/5/2006	
			48	7,009.0		7,021.0		6/29/2006	
Stimulation Intervals									
Zone			Start Date			Top (ftKB)		Btm (ftKB)	
CODELL, Original Hole			8/22/2011			6,535.0		6,543.0	
J SAND, Original Hole			7/7/2006			6,978.0		7,021.0	
Other In Hole									
Run Date	Des				Make	OD (in)	Top (ftKB)	Btm (ftKB)	
10/26/2018	Cast Iron Bridge Plug w/ 2 SX Cement					3.99	6,926.0	6,928.0	
10/26/2018	Cast Iron Bridge Plug					3.99	6,483.0	6,485.0	
Logs									
Date		Type					Depth Top (MD) (ftKB)	Btm (ftKB)	
5/21/2006		COMPENSATED DENSITY					2,650	7,379.0	
5/21/2006		INDUCTION					446	7,399.0	
6/29/2006		CBL/CCL/GR					2,700	7,347.0	
5/18/2011		GYRO					10	6,950.0	
7/25/2011		CBL/CCL/GR					2,750	6,300.0	
Plug Back Total Depths									
Date		Type		Com				PBTD (ftKB)	
5/18/2011		FILL		TAG WITH GYRO				7,160	
9/6/2011		FILL		FILL				6,630	