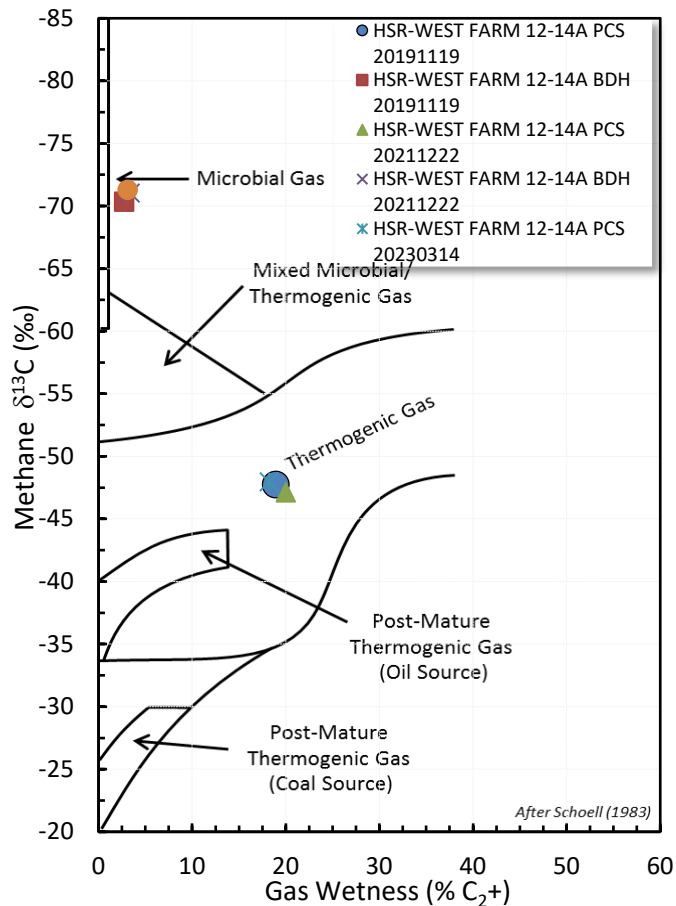
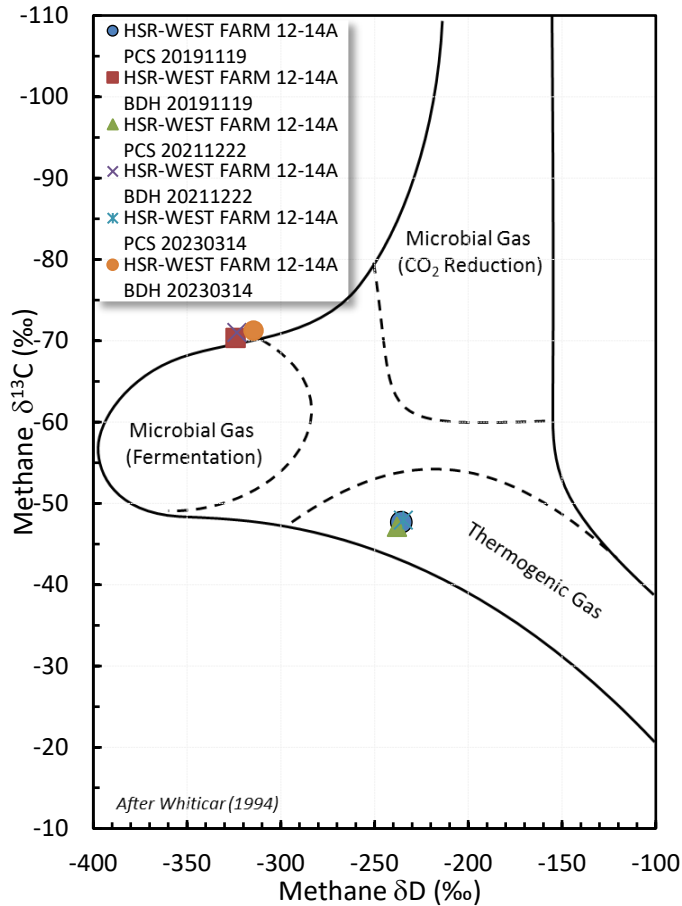


# Stable Isotope Interpretive Plots

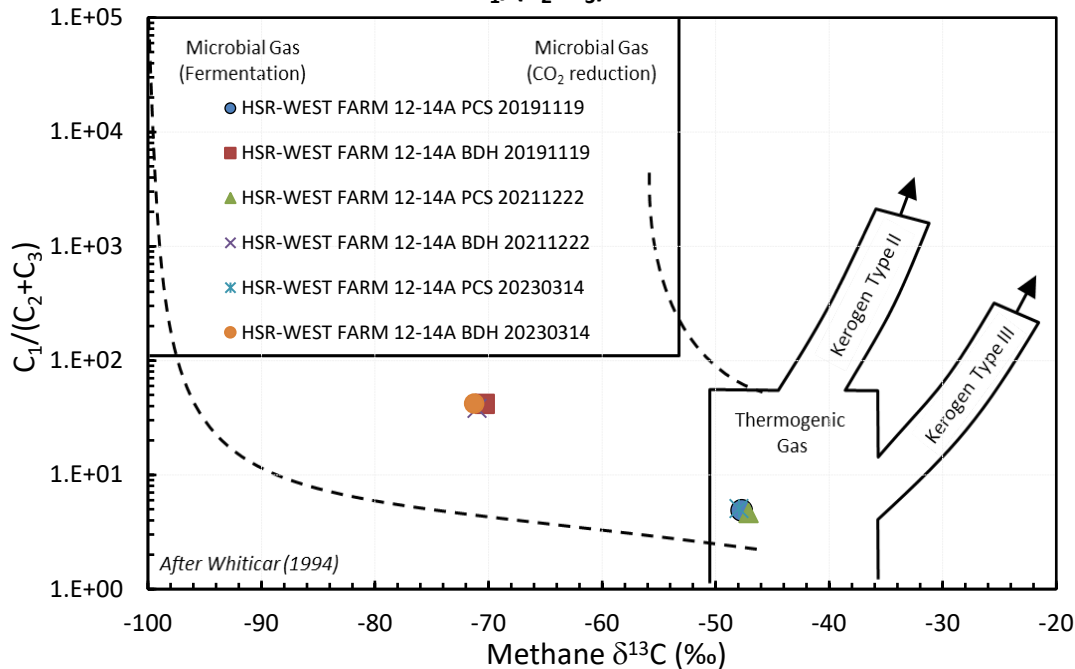
### Methane vs Gas Wetness Genetic Classification



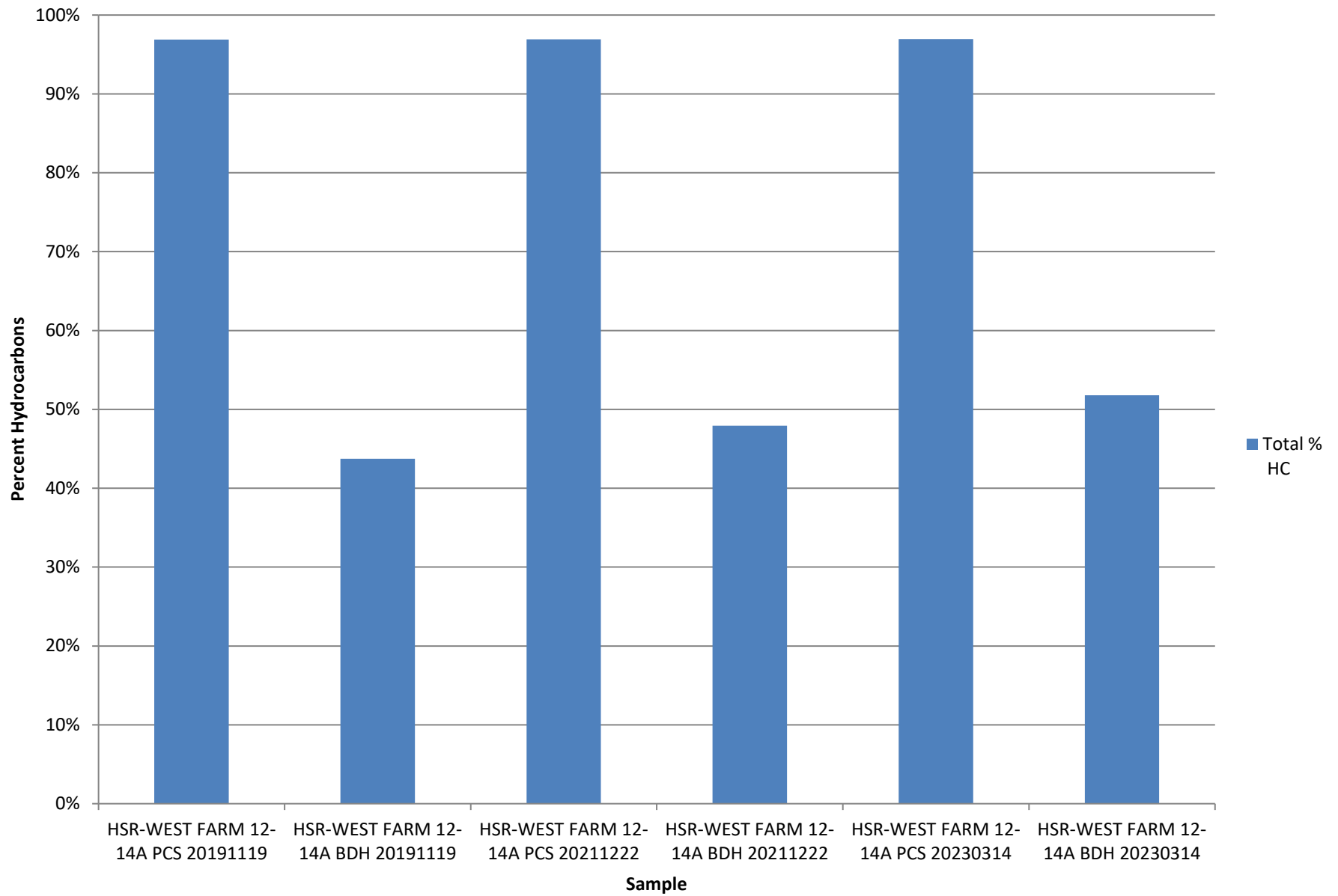
### Methane $\delta^{13}\text{C}$ vs $\delta\text{D}$ Genetic Classification Plot



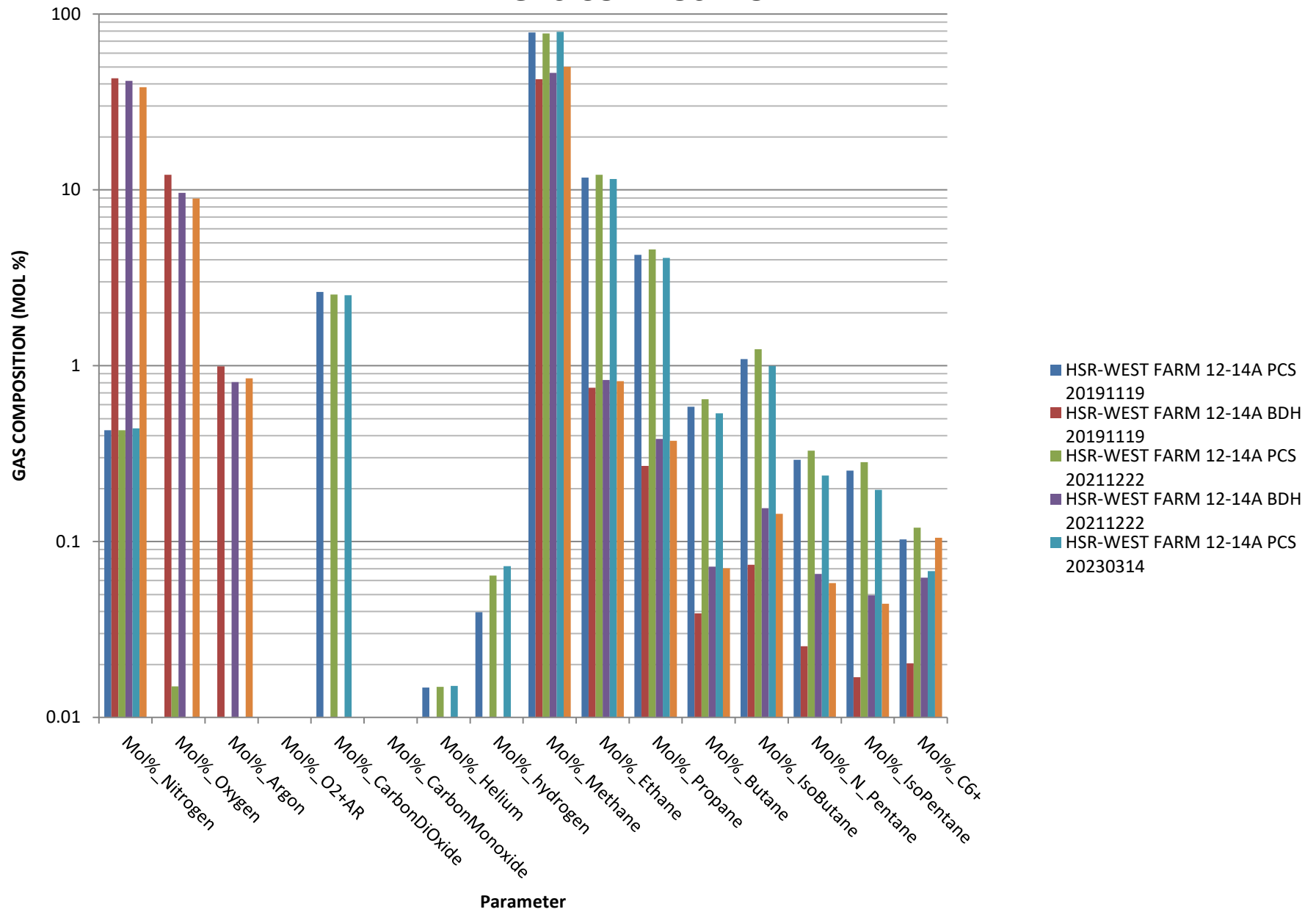
### Methane $\delta^{13}\text{C}$ vs $\text{C}_1/(\text{C}_2+\text{C}_3)$ Genetic Classification Plot



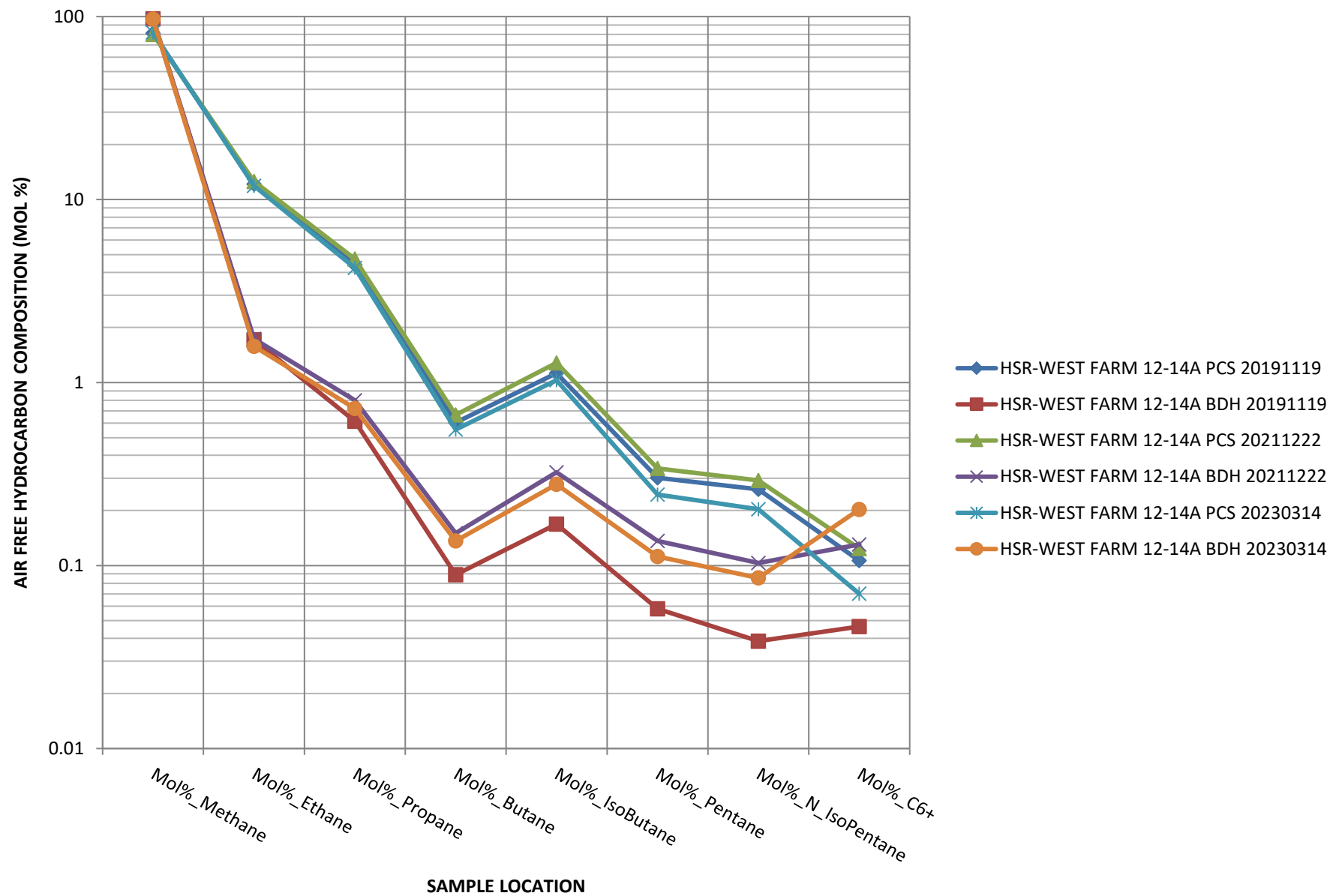
## Total Percent Hydrocarbons

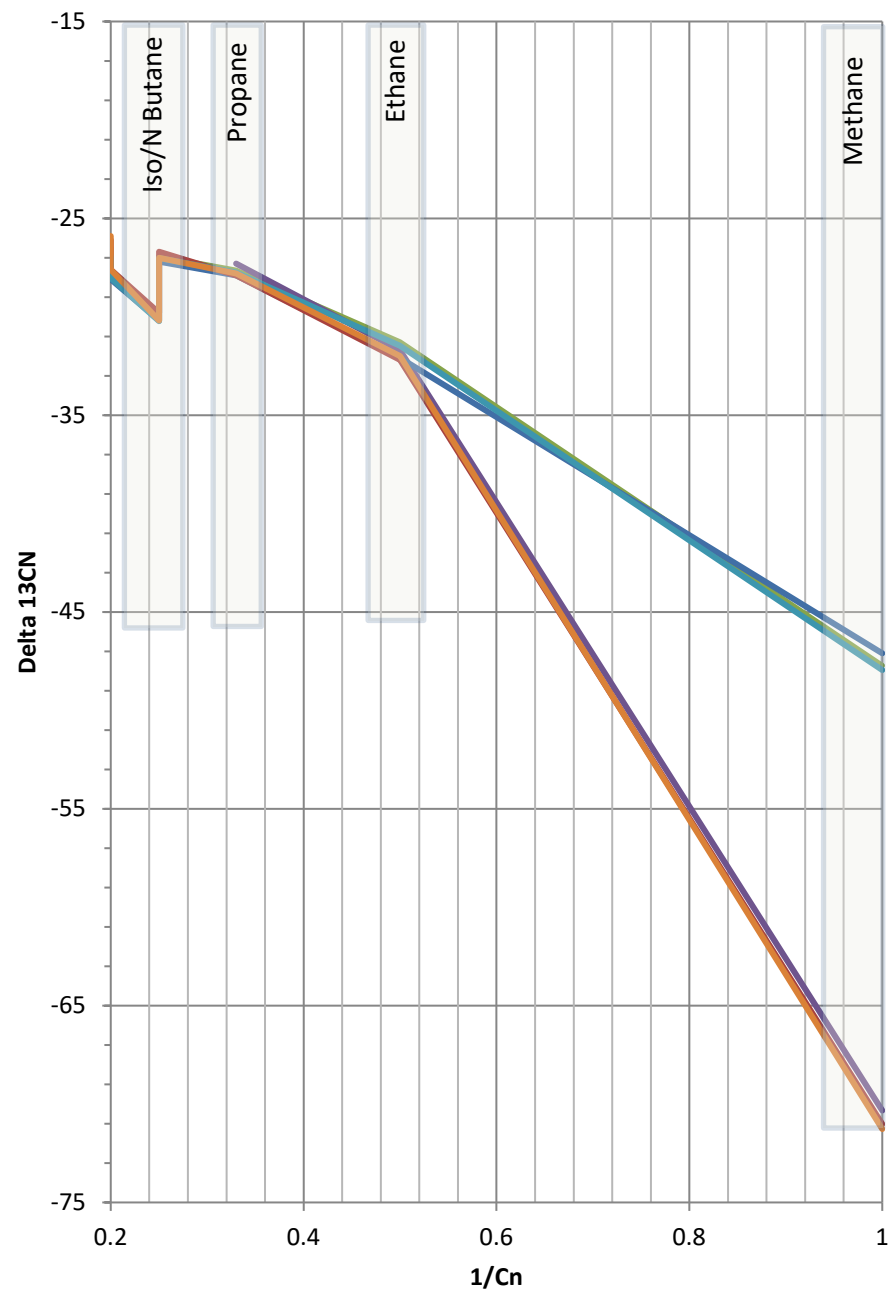


# GAS COMPOSITION



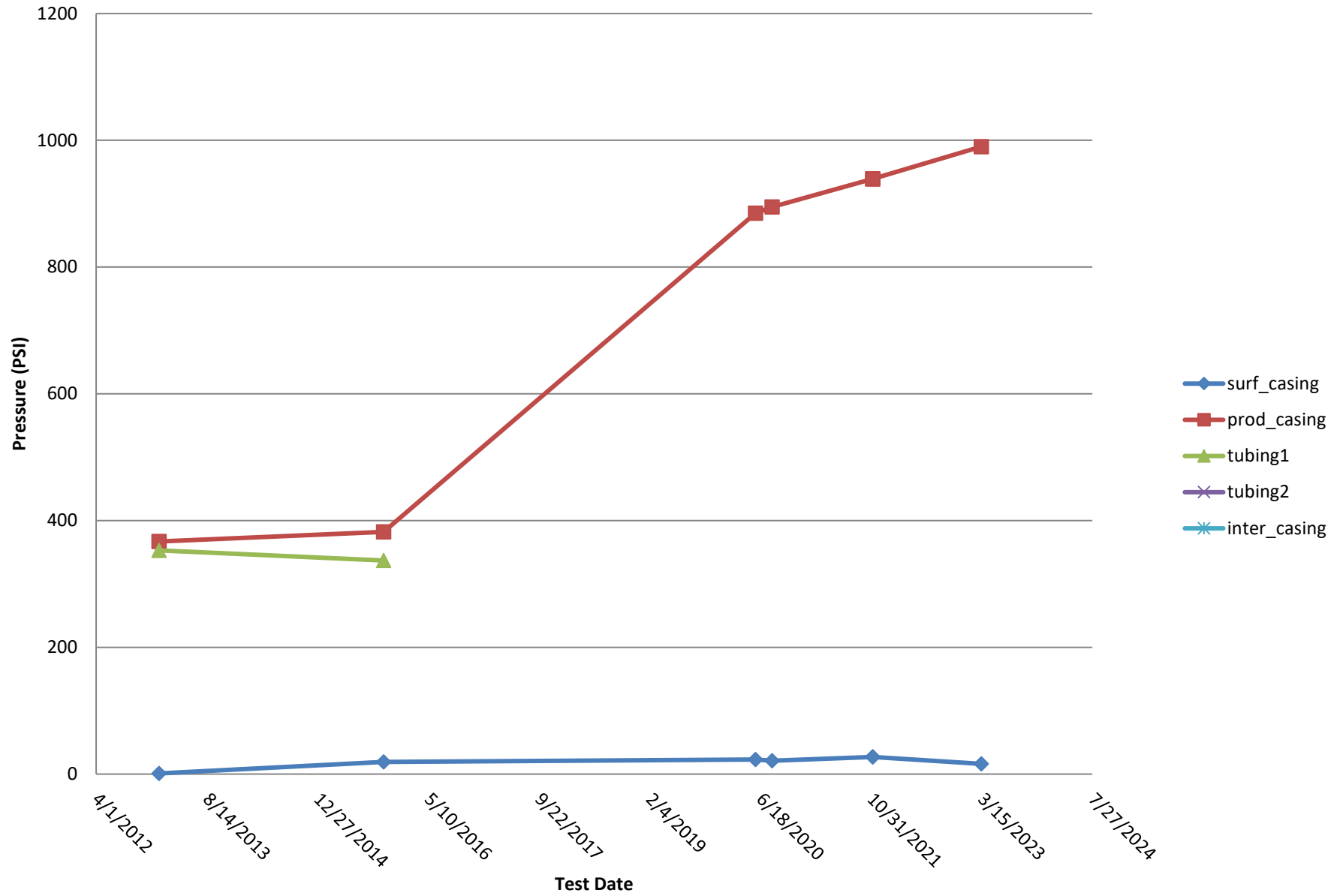
## HYDROCARBON COMPOSITION

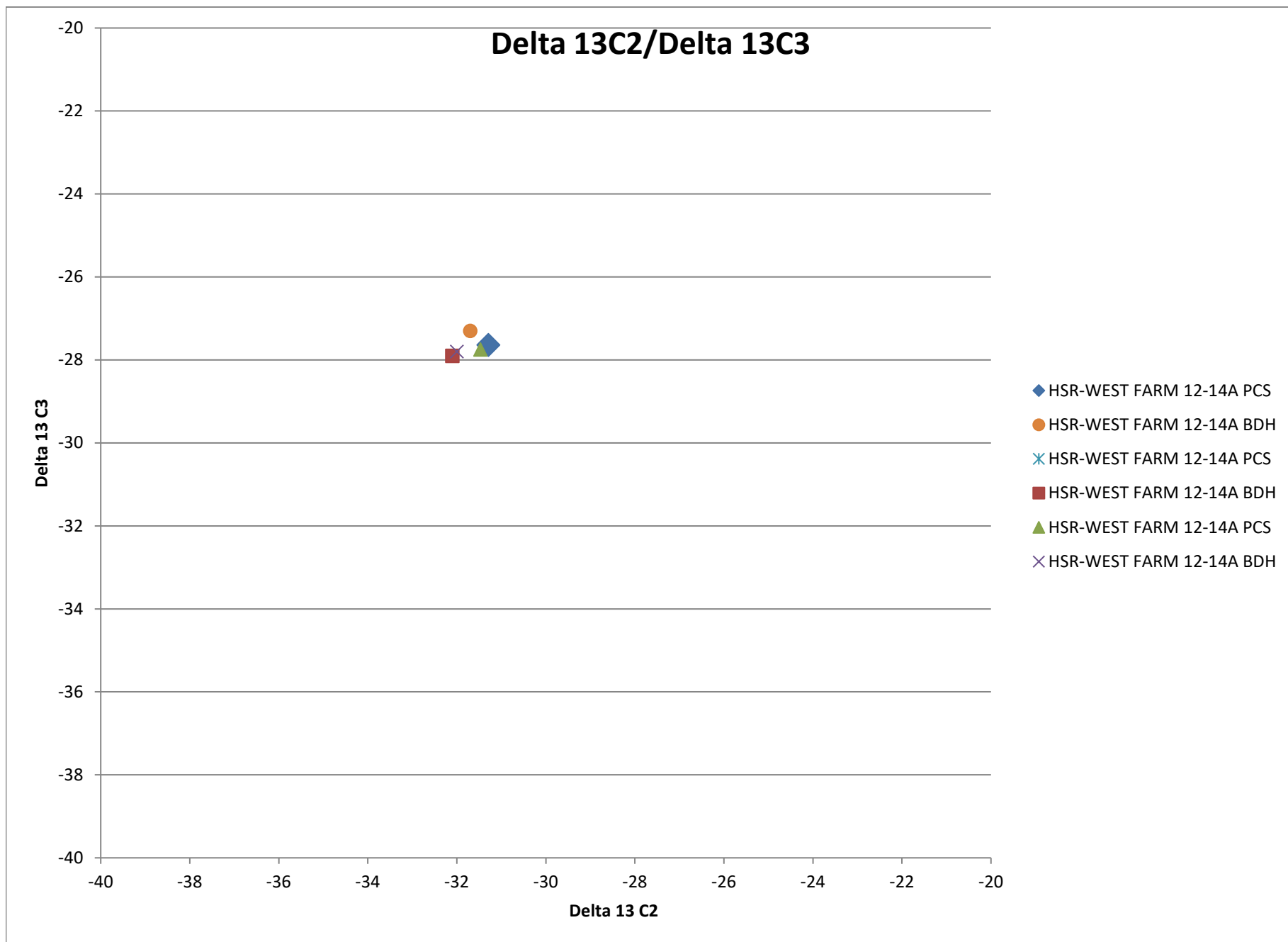




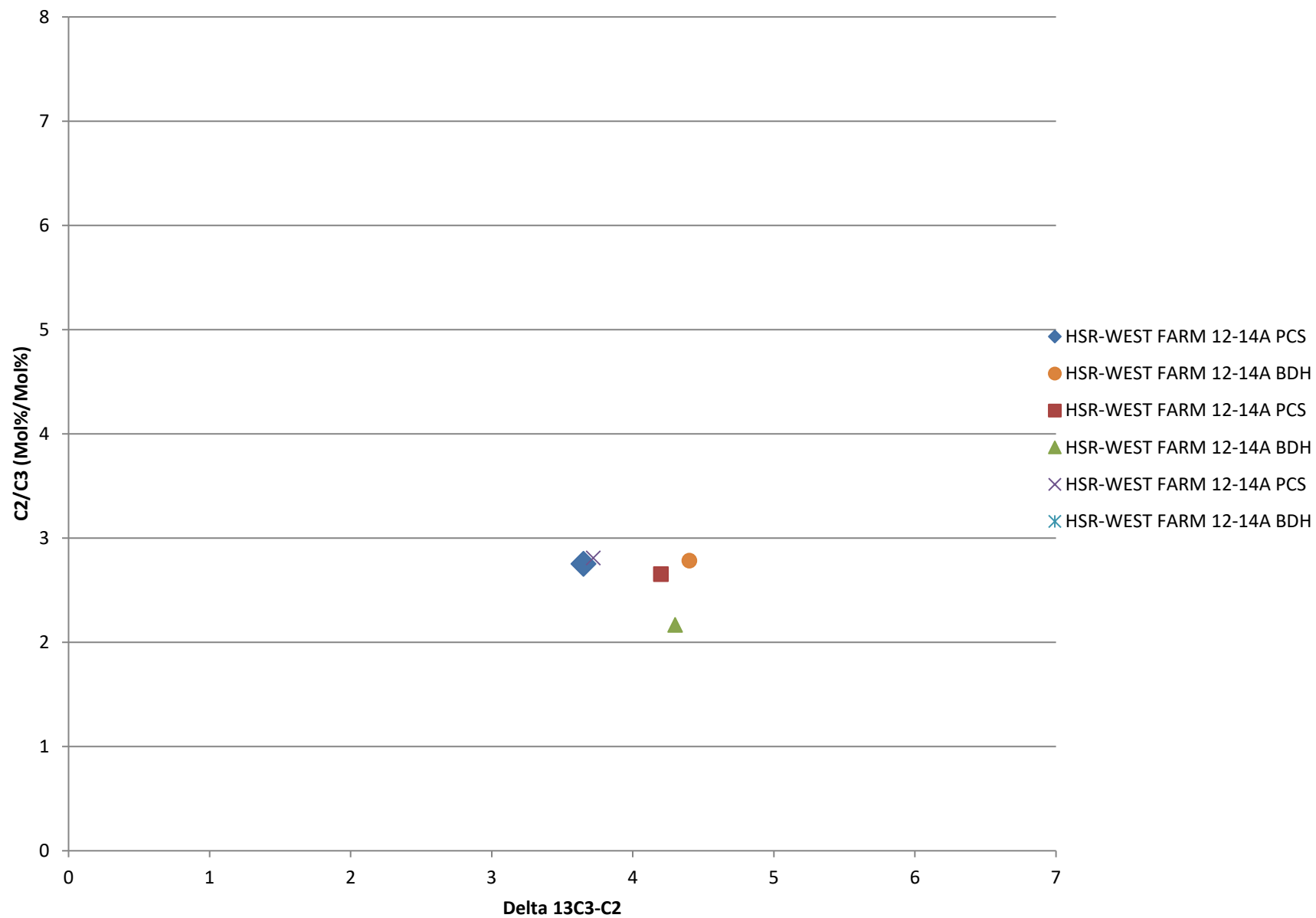
- HSR-WEST FARM 12-14A PCS
- HSR-WEST FARM 12-14A BDH
- HSR-WEST FARM 12-14A PCS
- HSR-WEST FARM 12-14A BDH
- HSR-WEST FARM 12-14A PCS
- HSR-WEST FARM 12-14A BDH

## Bradenhead Test Summary





## Delta13 C2/C3 vs. Delta 13C3-C2





## Delta 13 IC4/ Delta NC4

