

**North Shore Exploration and Production LLC
Smith 1
Location #313052**



Access road to location



Entrance to location

**North Shore Exploration and Production LLC
Smith 1
Location #313052**



Sign at tank battery



Open to wildlife

**North Shore Exploration and Production LLC
Smith 1
Location #313052**



Debris



Open to wildlife. Open end loadline.



**North Shore Exploration and Production LLC
Smith 1
Location #313052**



Stained soils



Line open to wildlife. Soil staining

**North Shore Exploration and Production LLC
Smith 1
Location #313052**



Stained soils



Open end tank valves. Stained soil

**North Shore Exploration and Production LLC
Smith 1
Location #313052**



Debris. Tank battery soil staining



Staining. Open end tank valve

**North Shore Exploration and Production LLC
Smith 1
Location #313052**



Tank battery soil staining



Stained soils

**North Shore Exploration and Production LLC
Smith 1
Location #313052**



Unused equipment storage

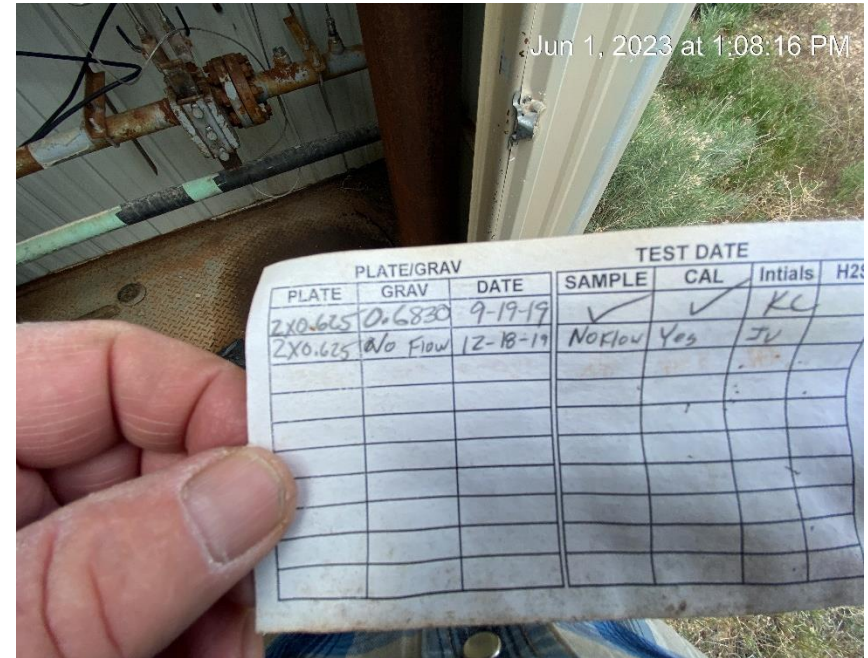


Unused equipment storage

North Shore Exploration and Production LLC
Smith 1
Location #313052



Separator and unused equipment



Calibration card out of date and not visibly displayed

**North Shore Exploration and Production LLC
Smith 1
Location #313052**



Contaminated liquid and open to wildlife



Open to wildlife with liquid

**North Shore Exploration and Production LLC
Smith 1
Location #313052**



Containment open to wildlife



Unused equipment storage

**North Shore Exploration and Production LLC
Smith 1
Location #313052**



Soil staining



Soil staining

**North Shore Exploration and Production LLC
Smith 1
Location #313052**



Catch containment full of liquid



Stained equipment and soil. Equipment not in use.

**North Shore Exploration and Production LLC
Smith 1
Location #313052**

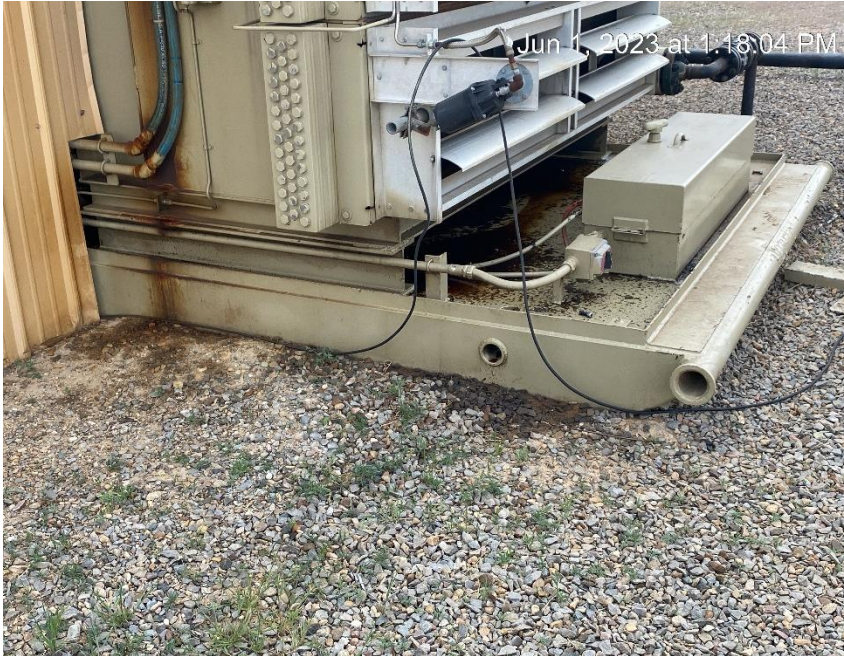


Open top tank open to wildlife



Oil underneath equipment. Stained soil

**North Shore Exploration and Production LLC
Smith 1
Location #313052**



Oily equipment and soils. Oil floating on equipment



Debris



North Shore Exploration and Production LLC

Smith 1

Location #313052



Debris



Debris



**North Shore Exploration and Production LLC
Smith 1
Location #313052**



Debris. Stained soils



Open to wildlife and containing liquid



**North Shore Exploration and Production LLC
Smith 1
Location #313052**



Open to wildlife and containing liquid



Open to wildlife and containing liquid



**North Shore Exploration and Production LLC
Smith 1
Location #313052**



Debris. Oil stains. Containments open to wildlife and containing contaminated liquids



Unused equipment. Soil staining.

**North Shore Exploration and Production LLC
Smith 1
Location #313052**



Stained soil. Open top container open to wildlife



Venting

**North Shore Exploration and Production LLC
Smith 1
Location #313052**



Stained soil. Burner openings open to wildlife. Not in service.



Oily debris not properly stored.

**North Shore Exploration and Production LLC
Smith 1
Location #313052**



Unused equipment. Open to wildlife.



Unused equipment

**North Shore Exploration and Production LLC
Smith 1
Location #313052**



Debris



Sign at wellhead

North Shore Exploration and Production LLC
Smith 1
Location #313052



Debris storage



Unused equipment storage

**North Shore Exploration and Production LLC
Smith 1
Location #313052**



Location from Southeast corner



Location from Northeast corner