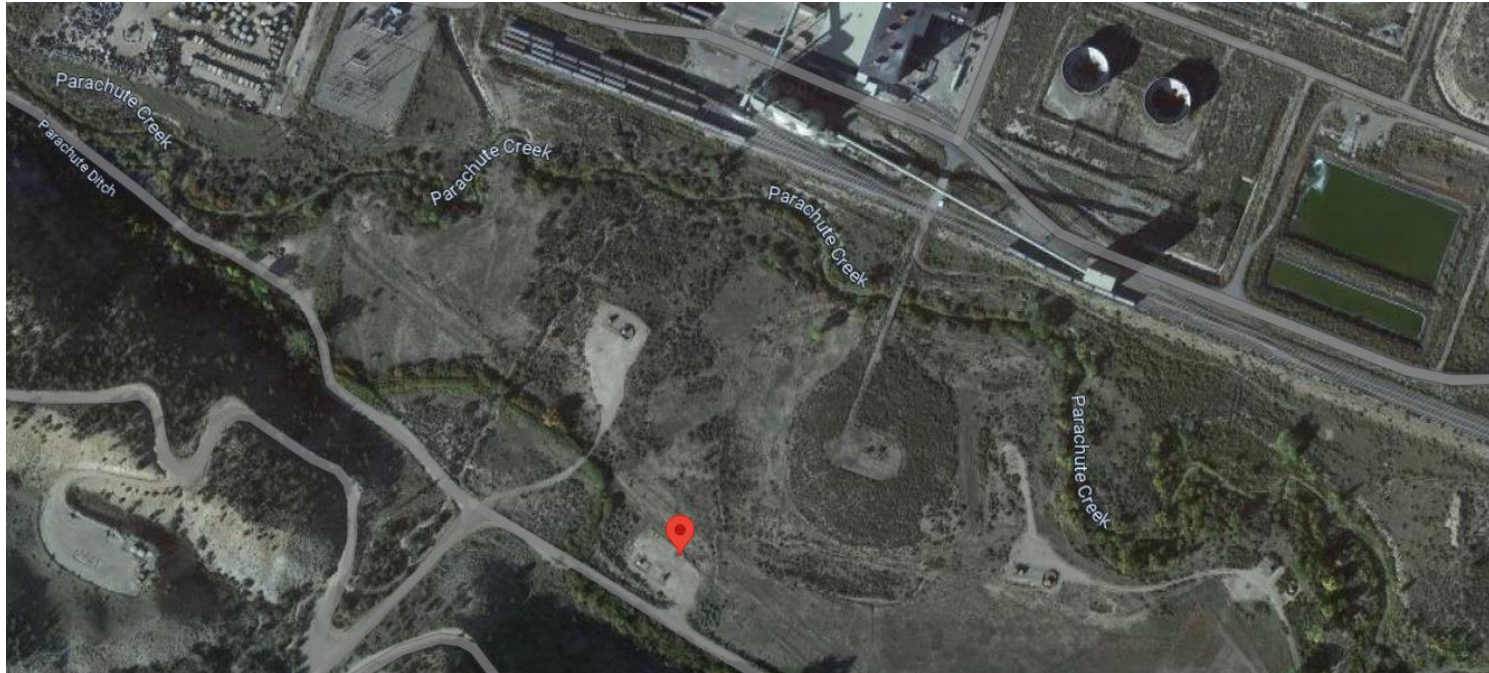


Storm Water Management and Erosion control
Location Name: TEP ROCKY MOUNTAIN LLC GM 267-3 Pad
Location ID: 324120



**Location Overview: Location is approximately 237 yards from
Parachute Creek
Section/Township/Range: 3 7S96W**



COLORADO
Oil & Gas Conservation
Commission
Department of Natural Resources

Storm water Management and Erosion control
Location Name: TEP ROCKY MOUNTAIN LLC GM 267-3 Pad
Location ID: 324120



North West corner of location.



North East corner of location.



South West corner of location.



South East corner of location.